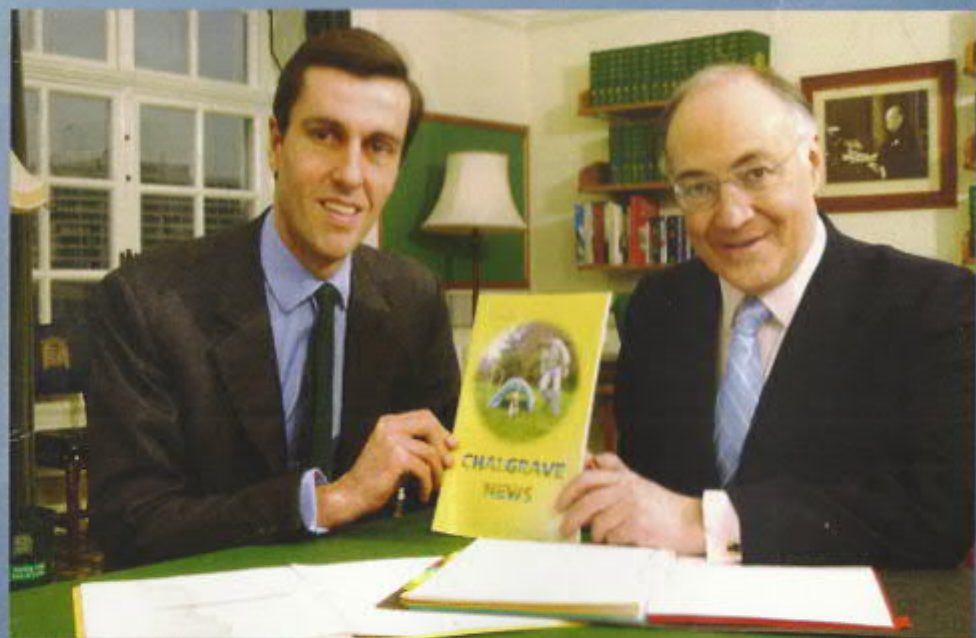


CHALGRAVE NEWS



Andrew Selous introduces Michael Howard to the Chalgrave News

Chalgrave Social Diary

- Parish Council meetings - Village Hall 7.30pm,
last Tuesday of the month
- Plough Inn - Quiz nights every other Tuesday 9.00pm
- Queens Head - Live entertainment every Friday 7.30pm
- Line dancing - Village Hall, Weds & Thurs eves 7.30pm
- Cricket Season starts first Sunday in June
- Old Time Music Hall - 14th, 15th and 16th April
- Book Club meetings - weekdays - contact Linda Hadden
- Pilates lessons started - contact Debbie Parry
- Magic Live Theatre Show. Dates to be announced
- Front Garden competition - judging 1st week of July
- Queen's Head v Plough cricket match early June
- Parish Assembly April 19th
- Pumpkin Competition at All Saints Church - September
- Chalgrave Games 16th July

IF YOU KNOW OF ANY EVENTS IN THE PARISH PLEASE LET US
KNOW FOR THE NEXT ISSUE OF THE SOCIAL DIARY

We are very grateful to Miss A Dolemore for her continued sponsorship of The Chalgrave News. If anyone would like to sponsor the magazine in future please contact one of the editorial team.

The Chalgrave News team produce The Chalgrave News in good faith and do all we can to ensure that no offence is caused to any individual or organisation. We also reserve the right not to publish articles and contributions submitted to us if these do not comply with our policy.

Editorial

The New Year brings new challenges for The Chalgrave News.

Changes in our printing arrangements make it a good time to review our design and layout and we would welcome comments or suggestions from our readers if you have any ideas for additional items or coverage in the coming issues.

Although design and layout may change, we would like to assure our readers that the editorial team remain committed to ensuring the Chalgrave News will continue to inform, entertain and remain impartial and non judgemental in our coverage of local issues.

Are you puzzled by your free gift in this issue? Puzzle no longer. Just plant the seeds provided; water; wait and by September you will be able to take part in the Chalgrave Biggest

Pumpkin Competition! The gauntlet was laid down by the vicar in our previous issue if you remember. Full instructions are given in the mag. Which brings us to the subject of the Best Kept Front garden competition. As we speak, a local garden centre is being approached to sponsor us so that this year there will be some REALLY GOOD PRIZES!! It's therefore worth putting in that extra effort to make a great garden display this year to win A REALLY GOOD PRIZE!!

OK, we don't actually know what the prize is going to be yet but it will be REALLY GOOD. So get gardening and remember there is a separate prize for best tub, basket or window box so those of us with little or no front gardens can still enter into the spirit.

The copy date for the next issue is 26th June.

Front Cover Picture Andrew Selous & Michael Howard

Last year the Chalgrave News Team invited both Tony Blair and Michael Howard to appear in The Chalgrave News.

We are delighted to have had a response from Michael Howard Leader of the Conservative Party who is pictured together with our local Member of Parliament Andrew Selous sharing a copy of The Chalgrave News.

No the picture has not been put together using computer tricks
- it is a genuine photo.

Many thanks to both Andrew Selous & Michael Howard for taking the time to allow us to obtain this unique photo.

If Tony Blair responds to our invitation you will see the photo in the next issue of The Chalgrave News.

What's Happened in Chalgrave since the Last Chalgrave News

Winners of the Christmas Lights Competition Steve and Sam received their well deserved New Year Hamper from the Editorial Team of the Chalgrave News. Everyone must have noticed their magnificent display at 15 Toddington Road.

Will there be a reduction in illegal hare coursing in Chalgrave after the introduction of the Bill to ban hunting with dogs? Courses are held without permission of the landowners and often wreck havoc by taking vehicles onto crop land. Anyone who sees anything suspicious should take note of car number plates and report them to the police.

Since the last Chalgrave News there has been another very bad car crash on the Houghton Regis to Toddington Road just past the top of Lords Hill. This happened around 6am causing the road to be closed in both directions for most of the morning. We understand that one of the drivers involved sadly died of their injuries.

There appears to be an increase in the amount of vandalism and graffiti being committed around the parish - particularly in The Tebworth area. To those involved please stop as you

are causing unnecessary worry to local residents. Remember it is your family as well as everyone else who has to pay for the damage you cause to be removed/repaired as the money comes from ever increasing community charges or rates as they are better known. Anyone who has information or witnesses a criminal act please contact your local neighbourhood watch or police.

Have you noticed the number of houses for sale since the beginning of the year in Tebworth? We have counted 10 to date. Is the rumour that the Milton Keynes/Bedford new canal link planned to pass through Tebworth the cause? Strangely no houses appear to be for sale in Wingfield or Chalgrave!

How long does it take for 6 men to erect a concrete garage at Chalgrave Sports Club? Answer 8 hours. How long will it remain standing before the gales blow it down? Answer 8 weeks? Anyone want a large amount of free hardcore - contact the Chairman Chalgrave Sports Club!

Anyone know how the new village entrance gates on the A5 entrance

What's happened continued.....

to Tebworth were broken?

Does it really take British workmen 2 months (according to the road information signs) to alter the traffic lights at the Leighton/Woburn junction in Hockliffe? What are they doing there? Has anyone ever seen more than 5 workmen actually working at the same time? One news report recently stated that the present traffic lights are being replaced by roundabouts and crossing lights. Certainly the roundabouts are making the general flow of traffic far better than the old traffic light system but why put crossing lights on the actual junction. Surely these would be better placed a short distance away from the junction. And why does this take 2 months to complete when 3 weeks should be more than sufficient time scale! Answers on a postcard please!

Question A - Which of our Parish

roads is in the worst condition as well as being the most well used?

Question B - Which of our Parish roads has had all it's potholes repaired in early March?

Answers

Question A - Hockliffe/Toddington road through Tebworth.

Question B - The Tebworth Road through Wingfield.

Money (our council tax) well spent?

Drain at the entrance to Park View Lane is still blocked and the road became quite a dangerous skating rink during the cold snap.

The highways have been notified but nothing seems to happen. I wonder if we feigned a drowning incident and threatened to claim insurance we could prompt them into action?

Practically the whole of the Village Hall Committee were banned from The Plough when they went there to have Christmas dinner. Should they now be listed as "undesirables" to hire the village hall in future?

Five meet down under



On returning to my home in the southern city of Dunedin, New Zealand, Ian and I met up with Janet & Dick (formerly of Pond Cottages, Tebworth) and Yvonne (also formerly of Tebworth) for a meal on New years Eve.

All three have moved permanently to live in Dunedin.

Lyndie Lothian

WHAT'S IN YER DRAWERS...by Florry Bunda

We are always interested to receive your old photographs here at the
Chalgrave Parish News.....

The photograph printed here must have been taken in the 1960's. I'm judging that by the large amount of crimplene on display, a fabulous material that required little or no ironing if I remember right, but which created so much static, it was possible to dim the lights and still be able to read a book!! Anyway, if anybody can reveal the names of the ladies who are raising a glass to us across the years or who can say what the special occasion was, details please as usual to 2, The Lane....



A RECIPE FOR THE BACHELOR WOMAN *with thanks to the Good Housekeeping Manual of 1922*

'The bachelor woman who lives in rooms, or where it is difficult to get little tasty dishes prepared for her, will be glad to have the following suggestion....

Steamed Fish with Orange Sauce.

Take some white fish and place on a greased tray, season, cover with a lid and steam over boiling water for 15 minutes. A few potatoes or vegetables might be cooked in the boiling water at the same time.

To make a sauce, put the juice and grated rind of an orange into a pan and boil. Mix 1 dessert spoon of cornflour to a paste with water and add to the juice, stirring until thickened. Add a knob of butter and pour sauce over the fish to serve. This will be found excellent.'

More 'little tasty dishes' next time & remember that dishes must only be greased with lard!!!

Peter Kuys

Many of you will be aware by now that Peter Kuys has decided that after reviewing the last issue of the News, the time had come for him to divert his charitable funds elsewhere. Consequently he will no longer be producing the Chalgrave News.

On behalf of the Editorial Team and indeed the Parish of Chalgrave, a big and sincere thank you is due for the magnificent financial support Peter has given over the initial 10 issues. Without his support we would certainly not have had such a fine presentation.

So, we move on and you can be assured that future issues whilst not perhaps as glossy will still be as (hopefully) readable as ever.

We are of course now actively seeking sponsors and perhaps contributions from any friends of the Chalgrave News and if you are feeling generous, please do not hesitate to contact one of the Editorial Team.

In addition, we would like to encourage anybody with a little spare time on their hands to consider either joining the team or (say) assisting with advertising and fund raising.

So once again, contact us if you can help.

Jackie Hammond

Jackie has been toiling hard behind the scenes getting new advertisers to subscribe to the News. This is a very time consuming job and Jackie joined us when all the advertisers needed contacting and funds collected for another year. Because of personal commitments Jackie will no longer be able to continue and we would like to thank her for all the work she has done.

BEDFORD MUSEUM

Saturday 2nd April

Come and see how we were then. Meet members of the forces,
see World War II vehicles, taste food from the NAAFI.

Watch a cake icing demonstration "Cakes of the Forces" by students from
Bedford College and share family memories as part of
Bedford Museum's wartime Bedford project.

Preview of selected items from the Museum of Military Intelligence at
Chicksands. Reconstruction of ARP Officer's room.

See shrapnel collected from Mid-Bedfordshire.

Courtney's Charity Dog Walk

I would like to thank everyone in Chalgrave, and most of all the dogs that helped me raise money for my friend Hailey.

Hailey needed a mobility scooter to help her get around. I managed to raise £245 towards this by walking 22 dogs, from the smallest, Pickle, to the very large Rosie the Saint Bernard.

I had a lot of fun in the 3 weeks it took me and I got very cold and dirty, but I enjoyed it. I also arranged a maths quiz at school as someone said they would give my maths group £300 if we all learnt a times table we didn't know. We got the £300! So a very big thank you from Hailey and her

mum.

The school had cakes sales and all sorts of things going on to raise money. So I can tell you that Hailey now has her mobility scooter.

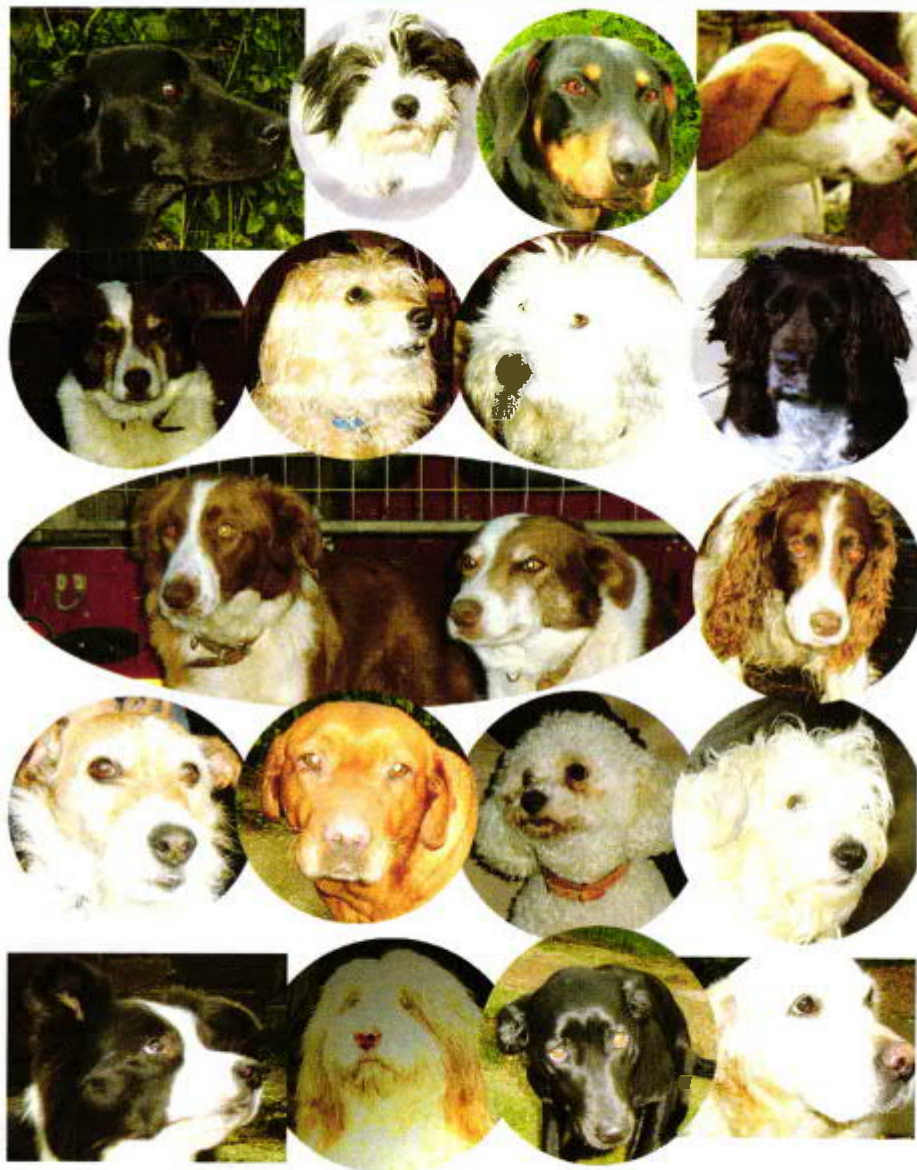
We raised over £3000 but only needed £1000 for Hailey's scooter! The balance of these monies has been put into a trust fund to provide things that will help Hailey in the future.

Since the Big Dog Walk I have a new puppy, a Springer called 'Useless', so that next time he can help raise money for a good cause!

Thank You
Courtney Finch



Courtney's Charity Dog Walk



These are all the dogs I walked and the first one is me with Rosie.

BEDS 'N' SHEDS

Improve Your Garden Security

The garden is your home's first line of defence against crime. Here are some ideas from Bedfordshire Police to protect your property:

TO SCRATCH A THIEF...

Prickly or hostile plants will slow down or deter unlawful entry to your premises - and there's no need for unsightly signage, as with other types of man-made perimeter defences, because you can't sue Mother Nature for causing injury.

When planting up the boundaries of your property, consider using any of the plants below. You can even put them under vulnerable windows to prevent anyone getting near enough to look inside. The Home Office recommends keeping hedges no higher than 1 metre and tree canopies no lower than 2 metres to enable natural surveillance from your neighbours and the street. If you can't see out of your property, no one can see an intruder on your premises.

When planting up the boundaries of your property, consider using any of the plants below. You can even put them under vulnerable windows to prevent anyone getting near enough to look inside.

Pyracantha (Firethorn) — all varieties
Berberis — *Ottawensis* *Superba*,
Stenophylla, *Darwinii*
Hippophae *Rhamnoides* (Sea Buckthorn)
Prunus *Spinosa* (Blackthorn)
Mahonia — all varieties
Ilex (Holly) — *aquifolium* varieties

Rose — climbing and rambling
Ulex *Europeaus* (Gorse)
Crataegus *Monogyna* (Hawthorn)
Rubus *fruticosus* (Blackberry)
Chaenomeles *Japonica* (Ornamental Quince)

Hostile planting is intended to complement but not replace crime reduction measures such as locks, alarms and lighting.

GET SHEDUCATED...

Unfortunately, if offenders have easy access to your shed, they also have access to the tools they need to break into your house. When you've finished in the garden, make time to:

Lock away your digging implements, this includes small items like trowels and dibbers — think about putting a lockable cabinet in your shed.

Secure your power tools — consider sinking a steel d-ring into the floor and chaining your mower to it.

Items that stay outside can also be chained together (such as garden furniture) or to a metal drain pipe — wheelie bins are often used to gain access to roofs and windows, wheel barrows can be used to transport stolen goods.

When you add up the value of the contents of the average shed, it can work out to several hundred pounds, so you need to make sure your shed is also secure:

Is your padlock adequate? It should be made of hardened steel and comply with British Standards.

It's no use having a good padlock when the hasp is of poor quality — make sure you fit one that covers the screw heads when it is in the closed position.

Beds'N'Sheds continued.....

Some outbuildings may have doors thick enough to fit a 5 lever mortice lock. Exposed door hinges would benefit from using coach bolts or clutch head screws so that thieves can't remove them.

Fit window locks — burglars won't risk climbing through a broken window if they can easily reach through and open it instead.

There are plenty of alarms suitable for outbuildings, ranging from fully wired systems connected to your house alarm to stand-alone battery operated units.

MORE ANTI-THEFT IDEAS...

Dusk-till-dawn lighting not only makes your garden attractive at night but removes the dark corners where a burglar can hide.

If you have a piece of stoneware you don't want to go missing, you could drape a chain around it and fix to a wall or the ground — to hide the chain, grow a climbing plant through it.

Battery operated drive alarms are also available on the market — these will ring a doorbell chime in the house when someone walks past it.

Don't forget property marking can be applied to furniture and tools — for outdoor items, microdot technology and etching work best.

More information and advice is available from your local Crime Reduction Office:

Bedford : 01234 275273

Luton: 01582 401212

Dunstable: 01582 473270

Battle of Trafalgar?

This year is the 200th anniversary of the Battle of Trafalgar and celebrations have already started in Wingfield with a daily re-enactment of this famous battle from dawn to dusk!

At first light the sounds of Nelson's flagship's opening cannon salvo's ring across the fields and the sound of battle gathers strength as the day progresses. Broadside after broadside sounds out and if you close your eyes you can almost hear the screams of

the brave sailors who fought in that glorious battle.

On the other hand - *but not Nelson's* - those screams could be from the residents of Wingfield who have been subjected to continuous explosions from the crop field bird scarer for some weeks now! Strangely the birds seem to be showing themselves to be as brave as our jolly jack tars of old and ignoring the bird scarer regular explosions!!

Chalgrave Senior Citizens Committee
presents
an evening of

OLD TIME MUSIC HALL

FOR

Three nights

Thursday, Friday and Saturday

14th, 15th, 16th April

at

Chalgrave Memorial Hall, Tebworth

Tickets £10.00 each

Including two course meal

and song sheets



Bar available

Tables of 8 maximum or individual tickets from:

Roger Masters, 2 The Lane, Tebworth.

Tel: 01525 873039

Chalgrave Parish Plan Group

Twelve months ago, a group was formed from Parish volunteers to look at the possibility of obtaining a grant from the Countryside Agency to produce a Parish Plan for Chalgrave.

A Parish Plan identifies actions which can be taken forward by the Parish Council, by other individuals or groups within the local community or by other service providers and statutory bodies. These should have a clear focus on whom, how, what and when.

The Group's work so far has, through a transport needs survey unearthed two areas where help is needed. Namely a 'Community Help Scheme' and a 'Taxi Bus Scheme'.

Taxi Bus Scheme

The Taxi bus Scheme is required to get people to and from Harlington train station. Toddington Parish Council have also expressed a wish to be part of this scheme and have allocated funds to add to our own grant to help set up the scheme. Notices are being placed in both Harlington and Leagrave stations informing users of this proposed scheme.

If you use the trains at least once a week then this service could be of use to you. If so, please leave your details on the Parish Plan e-mail address chalgravevillageplan@hotmail.com or contact Leslie Smith on 01525 874716.

Community Help Scheme

There is already a growing network of Village Care Schemes in Bedfordshire set up with the help and support of the Bedfordshire Rural Communities Charity and financed by the Countryside Agency.

It appeared from our survey carried out last year that such a scheme could be viable in Chalgrave. Many volunteers have come forward to help with the scheme but as yet there seems to be a reluctance to help with the actual running of the scheme.

Parish Plan Public Meeting

The Parish Plan Group is intending to hold a public meeting in May to discuss this and other topics which have come up as a result of the 'Likes and Dislikes' orange questionnaire which was circulated before Christmas, and to take all viable schemes through into the Parish Plan which will be completed by the end of November 2005.

This meeting will be a real opportunity for all the community to voice their needs and wants and to enjoy a social get-together as well.

Further details will be circulated nearer the time

Roger Mence - Chairman, Parish Plan Group.

The Chalgrave News

at the Chalgrave Games

The Games day is scheduled for Saturday 16th July this year
and promises to be better than ever.

Watch out for us!

The News will be supporting the games by providing
Strawberries and Cream
and Iced Pimms
Perfect to follow the delicious barbeque.

In addition, we will be holding a competition to find the
best written short story.

There will be two prize winning categories
14 and under, and over 14
with the winning stories being published in the
Chalgrave News.

After School Child-Care Wanted

Wingfield Road, Tebworth Mondays, Tuesdays and Wednesdays
£6.00 to £8.00 per hour Dependant on skills and experience

Responsible, fun and caring person wanted to look after our two daughters
aged 5 and 7 who will need after school care from mid April onwards.
Both girls are at Toddington St.George s School full time. Ideally the care
would be provided from our home in Wingfield Road, Tebworth.

Hours: 3.30pm to 6pm Monday, Tuesday and Wednesday, term time only,
although some holiday cover could be agreed if required

Key Duties: Care and entertainment and preparing their evening meals
References and own transport required

Please call Debbie or Phil Parry for more details
875169 or 07831 605600

Ramblings on the Parish Council

B ill (scoop) Archer



You may well not read this as I have been told I've missed the deadline. I have said that my subject matter is now covered by the Chairman of the Council but I am told my light-hearted approach would be appreciated. So I'll have to lighten up because although sometimes frivolous I didn't think I was a 'little ray'.

As I missed one meeting my coverage may be somewhat sketchy but looking back through my notes I find that some subjects have been a recurring theme meeting after meeting, and it's not because our councillors have been sitting on their hands, it's just the sheer grind of trying to get things done against beaurocracy.

Two bus stops regularly appear. St Mary's close where its proximity to the corner has been an issue, the other is Chalgrave Church and where the stop should go - the top of Chalgrave Road or on the triangle opposite.

The war memorial in the churchyard is another chestnut. Rumours of grants abound but chasing them down is a task for Hercules.

At long last, a grant has been obtained from North Chiltern Trust for replacement notice boards for the Parish.

I note too that the January Minutes anticipated three publications in Chalgrave that the Chairman will contribute to 1/ The Chalgrave News 2/ Parish Council newsletter 3/ Queen's Head newsletter. So you will be inundated with information.

You will all be disappointed that you missed the hedge laying day at Shefford on the 22nd February but there should be a public meeting coming up in April to discuss the Parish Plan. Elsewhere in this publication should be articles on Village Care Scheme, Taxi bus, Parish Plan and an analysis of Orange survey (whatever that is!)

I note at this meeting poor Lesley (the clerk) was lumbered with checking potholes on the Toddington Road, chasing up a tipper lorry route through Tebworth, and getting consultative documents regarding Luton airport - only a few of the items on the agenda. She certainly does work hard for her crust! The Parish Council are extremely concerned that packing more houses around Luton with insufficient jobs will cause more commuting to other areas with consequential road congestion. Also the East of England Plan takes for granted the loss of Green Belt

-So much traffic that every road will have a Green Wave - and you know what that means...or do you?

Chalgrave Church



EASTER

Good Friday Service 10am featuring seasonal hymns and reflections.
Easter Parish Communion at 11am
Songs of Praise in the evening at 6pm.

There will be another Coffee morning organised by the Church in the Memorial Hall on 9th April following the success of the one last Autumn. Excellent tea. Excellent cakes, (I really mean it - they are) and of course, excellent company. From 10 - 12 noon.

There will also be a Ploughman's Lunch in the delightful setting of the church on May Bank Holiday Monday, 2nd May from 12 - 2pm.

On Sunday 29th May the Revd Tony Knox will preach for us at Chalgrave. Some of you may remember him as a past Rector of Toddington. The service starts at 9.30 am.

I am sorry I have not been in the villages of late. Some of you will know that I am recovering from an operation and I look forward to getting better and getting to Tebworth and Wingfield. However, I am now well enough to enter the.....

PUMPKIN CHALLENGE

Last Autumn I challenged the parish to come up with a large pumpkin for our harvest festival which is on the last Sunday of September. I am delighted to see that certain parishioners have responded to the challenge, including the editors. Obviously there are going to be lots of pumpkin pies this Autumn, (yuk) but the real challenge is, who can grow the largest?
I have already seeded mine and unleashed the 'Secret weapon'.
Happy growing and let me know how you are getting on.

The usual times of the services at All Saints are:-

1st and 3rd Sundays - 9.30 am Parish Communion with hymns.

2nd Sunday - Family service 11 am - a shorter service with hymns and a short talk.

4th Sunday - 11 am Parish Communion with hymns

See notices for 5th Sundays.

Please remember that All Saints is your parish church.

Do contact the Rector with regards to baptisms and weddings and any other matters you wish to discuss with him.



Frank Powis

1922 - 2005

Sadly, we report the loss of Frank Powis of Toddington Road, Tebworth who died suddenly earlier this year.

Frank was born in Swindon village, one of ten children and spent most of his youth in Cheltenham, before undertaking his national service in the RAF. He moved to Tebworth over 50 years ago, working on the railways and Renault Cars before finishing his working life serving behind the bar at the Queens' Head.

Frank loved walking, spending time in his beautiful garden and occasionally returning to Cheltenham to see his family and watch the National Hunt racing. He was a wonderful husband and carer to his wife Daphne, particularly in recent years as her health sadly declined.

I am sure you will all join us at The News as we offer our sincere condolences to Daphne and family at this difficult time.



Double Murder in Hockliffe

One of the most distressing stories to have occurred locally this year must be the dreadful murders in Hockliffe of 79 year old Mrs Iris Jones and her adopted daughter 34 year old Mandy Joseph in February.

According to newspaper accounts they lived a peaceful life in their house hidden behind the petrol station in Hockliffe and were well known in the village. We have been told that Mrs Jones might have lived in Wingfield many years ago but at the moment cannot confirm this.

Mrs Jones had been a foster mother and over the years fostered no less than 120 children.

It was tragic therefore to learn that very shortly after their bodies were discovered the police had arrested and charged 3 people in Beccles Suffolk

for these murders - which were committed with a shotgun - and one of the arrested was a former foster child of Mrs Jones.

He was named as 45 year old Michael Millcroft.

The other two charged were 36 year old Anita Mansfield and an unnamed 14 year old schoolboy.

All three were also charged with trying to obtain £800,000 by deception through a life insurance scam.

Our condolences go out to the family and friends of Iris Jones and Mandy Joseph.

We will ensure that we keep everyone updated with the police investigation in the next issue of

The Chalgrave News.

Ghost Hunting for the Interested

Alan, who works behind the bar at the Queens' Head, has an interesting hobby. As a member of Night Watch UK, he hunts the paranormal - Ghost hunting to the uninitiated. We asked him to provide an article for the News and the Chairman of his group kindly provided the following.....

Most people in the world believe that ghosts and spirits don't exist and that it's all in your imagination. It's a known fact that 99% of alleged paranormal experiences are explainable in a logical scientific manner.

Night Watch UK is a club that was formed to investigate the other 1% of paranormal experiences that remain unexplainable, defies logic and resists every attempt to rationalise the experience. Take for instance a personal experience I had in a 'haunted

Night Watch UK is a club that was formed to investigate the other 1% of paranormal experiences that remain unexplainable, defies logic and resists every attempt to rationalise the experience. Take for instance a personal experience I had in a 'haunted' theatre in Margate, Kent. It had been a hot day in August and the evening whilst marginally cooler was still warm. Myself and fellow ghost hunter and author Ruth Stratton were sitting by the stage of the theatre when we heard running footsteps from the stone stair case fire escape behind us. We found this spooky as we were conducting an exercise we call 'silent running', in that everyone on the ghost hunt stays on one spot for an hour. No talking, moving or torches waving about are allowed. None of our team was staking out that section of the theatre. We knew where everyone was and there was no other way to access that fire escape except past Ruth and myself. We ran after the footsteps. After a rapid ascent of two flights of steps you arrive at the chained and padlocked double doors, which lead to a blind back alley behind the theatre. As I reached the double doors my breath was heavy from the chase. Both Ruth and I could see the steam of our breath and noted that the temperature was freezing. After a few minutes the atmosphere returned to normal. To this day I cannot rationally explain the encounter. If ghosts are in the imagination of one person then how come both of us heard the footsteps, both of us experienced the cold and both saw our breath hanging in the cold air? Research into the phenomena of ghosts reveals a range of different experiences but most follow a pattern. Generally the

experience is unexpected in that it initially catches you off guard. It can take the form of something seen, heard, smelt or felt. The more intense the experience, the more colder the air temperature becomes during that experience. We have recorded localised drops of up to 10 degrees whilst the temperature of an adjacent room is normal.

At Nightwatch UK, we use a range of scientific equipment to search for that other 1% experience as well as drawing on the talents of anyone who claims they can connect or communicate with Ghosts. Throughout our investigations of a building we are always looking for the rational, logical or scientific explanation to an initial unexplained event. We seek to gather evidence of the existence of ghosts, as proof is a personal thing for the individual to decide. Over the many years of being a ghosthunter and examining 1000's of photographs, hours of video footage, and staking out over 65 haunted buildings, the weight of evidence has swayed me from sceptic to optimist and has led me to just one conclusion. Something spooky is definitely going on. Is it the fun and games of those passed away? Only a fool would conclude that. So, after reading this article you conclude that something spooky is going on in Chalgrave and you don't mind a bunch of dedicated volunteers staying the night with you, give me a call.

Graham Matthews
Tel 07759117495.

There you are then. If you would like to share any experiences with the Chalgrave News or would just like to comment on the article, then please get in touch with one of the News team.

'theatre in Margate, Kent. It had been a hot day in August and the evening whilst marginally cooler was still warm. Myself and fellow ghost hunter and author Ruth Stratton were sitting by the stage of the theatre when we heard running footsteps from the stone stair case fire escape behind us. We found this spooky as we were conducting an exercise we call 'silent running', in that everyone on the ghost hunt stays on one spot for an hour. No talking, moving or torches waving about are allowed. None of our team was staking out that section of the theatre. We knew where everyone was and there was no other way to access that fire escape except past Ruth and myself. We ran after the footsteps. After a rapid ascent of two flights of steps you arrive at the chained and padlocked double doors, which lead to a blind back alley behind the theatre. As I reached the double doors my breath was heavy from the chase. Both Ruth and I could see the steam of our breath and noted that the temperature was freezing. After a few minutes the atmosphere returned to normal. To this day I cannot rationally explain the encounter. If ghosts are in the imagination of one person then how come both of us heard the footsteps, both of us experienced the cold and both saw our breath hanging in the cold air? Research into the phenomena of ghosts reveals a range of different experiences but most follow a pattern. Generally the experience is unexpected in that it initially catches you off guard. It can take the form of something seen, heard, smelt or felt. The more intense the experience, the more colder the air temperature becomes during that experience. We have recorded localised drops of up to 10 degrees whilst the temperature of an adjacent room is normal.

At Nightwatch UK, we use a range of scientific equipment to search for that other 1% experience as well as drawing on the talents of anyone who claims they can connect or communicate with Ghosts. Throughout our investigations of a building we are always looking for the rational, logical or scientific explanation to an initial unexplained event. We seek to gather evidence of the existence of ghosts, as proof is a personal thing for the individual to decide. Over the many years of being a ghosthunter and examining 1000's of photographs, hours of video footage, and staking out over 65 haunted buildings, the weight of evidence has swayed me from sceptic to optimist and has led me to just one conclusion. Something spooky is definitely going on. Is it the fun and games of those passed away? Only a fool would conclude that. So, after reading this article you conclude that something spooky is going on in Chalgrave and you don't mind a bunch of dedicated volunteers staying the night with you, give me a call.

Graham Matthews Tel 07759117495

There you are then. If you would like to share any experiences with the Chalgrave News or would just like to comment on the article, then please get in touch with one of the News team.

**South Bedfordshire Association of
National Trust Members**

**Highlights of China.
An incredible Grand Tour
through colour slides.**

Mrs Margaret Dickson

**Salvation Army Hall
Bull Pond lane, Dunstable.**

7.45pm

Visitors welcome at £1.00

Flight Path Changes over Chalgrave

In the last issue of the Chalgrave News we published a story that had come to our attention regarding proposed changes in the Luton airport flight path that would be sending aircraft over our parish each day at fairly low altitudes but our Parish Council were not aware of these plans because they were never consulted!

Further urgent investigations were made by our parish council and we can now set out the updated situation.

Following a discussion with John Eden, Environmental Health Manager at South Beds District Council it has been ascertained that by law a letter should have been sent to interested parties in July 2004 but our parish council did not receive any letter or other documents. (Toddington council received their copy and have been debating this subject for over 12 months!). The public consultation ended on 8th November 2004!

If the new flight path is adopted up to 60 flights per day will fly at a level height of 4500 feet over Toddington and then Leighton Buzzard before descending into Luton airport. The number of flights would depend on wind direction each day.

Our parish council have requested copies of the consultation documents and further details will appear in forthcoming copies of the Chalgrave News. However there are some questions that need answering here. It is obvious that these proposed changes would have been known for some time by both County and District Councils. In which case why did our County Councillor Rhys Goodwin or District Councillor Norman Costin not inform the parish council of this situation? They have not served us well on this occasion.

BUS TRIP

A woman gets on a bus holding her baby.

"That's the ugliest baby I've ever seen," says the bus driver.

In a huff, the woman slams her fare into the box and
takes an aisle seat near the rear of the bus.

The man seated next to her senses her agitation and asks what's wrong.

"The bus driver insulted me!" she shouts.

The man replies, "Well, he's a public servant and shouldn't
say things to insult passengers!"

You're right," says the woman. "I think I'll go back up
there and give him a piece of my mind!"

"That's a good idea," the man replies.

"Here, let me hold your monkey."

The Forgotten Tree.....a sad, sad story

A thousand years ago the native Black Poplar thrived across the lowland flood plains of the English countryside. Its huge, often steeply leaning bulk was almost as common as oak. But since the start of the 19th century its natural habitat has been steadily destroyed by housing and farming. The great tree has been quietly vanishing from our landscape.

Now it is Britain's rarest native timber tree.



Populus nigra subs. *betulifolia* is an important link with Britain's past. It was once such a common sight that it features in many classic paintings of the English countryside — John Constable's *The Hay Wain* is one example. It was so useful for building and scaffolding that it was habitually planted near farms and developing villages. The shaped lower branches were especially prized for cruck frames. Its toughness made it a favourite of waggonmakers, bowl turners and fletchers - a Black Poplar in Portsmouth has been established as the descendant of one used to make arrows for the armoury of the warship *Mary Rose* (McKee, 1982). Its mysterious, gnarly look gave it a spiritual attraction, too. In some parts of the country it was the subject of tree-dressing ceremonies dating back centuries, and whose origins are now unknown.

But the black poplar has a problem — it needs very specialised conditions in which to propagate. Seeds need to lie undisturbed on bare, wet mud or silt from June to October to germinate successfully - conditions that became harder to find as Britain grew more industrialised and more heavily populated.

As the need for native timber as a building resource dwindled and fewer Black Poplars were planted, this propagation difficulty became more important. An added complication was that only male trees had generally been planted - females were considered a nuisance because of the drifting white down they produce. By the beginning of this decade only about a thousand trees were known to have survivednot enough to guarantee the survival of the species. In 1993 environmental scientists predicted that the species would be extinct within twenty years. Thankfully, a small band of enthusiasts had other ideas. They were battling to save what had become known as The Forgotten Tree.

In Chaggrave Parish there are at least three of these trees. One on The Lane just past the 30mph signs. Two more are beside the stream further down. Another is just outside the Parish towards the Woburn Road, and again beside the stream. It would be interesting to hear if anyone knows of any more in the Parish and should our Tree Warden find some new sites to plant some young trees for future generations?

Remembering Brian Gridley

I have very fond memories of Brian who died on 13th Nov 2004. It's so sad that he is gone at such a comparatively young age. He grew up in Tebworth but had no family left. Wherever he went everybody knew Brian! He had what we now call "learning difficulties" but he was by no means daft. His dad used to say "if he'd been normal he'd have been a genius" and that about summed him up. He was always interested in old motor vehicles and aeroplanes and was quite knowledgeable on all the different models. He had an expensive and complicated camera that he understood in all its complexity. He really came into his element though at the village concerts which were held regularly for many years. Often at rehearsals we got a bit concerned because he didn't seem to be following things, but put him in front of an audience and he shone! He just had that knack of ad-libbing with the most original comments with perfect timing. He was the star of many a show! Our sympathy goes to Janet, his girlfriend of many years standing. They were very fond of each other.

Ken Green



Land Sale In Wingfield

For the past couple of years an ever increasing number of stories were being reported in the national media concerning members of the travelling community setting up illegal encampments on green belt agricultural land. In the past these plots of land were usually owned by the local authorities or farmers but 2003 onwards saw a more worrying trend whereby the travellers themselves were buying green belt plots and contrary to planning laws and regulations setting up permanent homes on their land. Local councils seem almost powerless to evict these new settlements despite the obvious breaches of planning laws which all homeowners have to abide or suffer the full wrath of the law.

There was great concern in many areas of the parish when it became known that two green belt plots were being offered for sale in Wingfield at prices well in excess of usual agricultural values.

As had happened in other villages it was decided to try to form a consortium from within the parish to purchase these plots to avoid any possible future inappropriate use of the land.

A public meeting was held at Chalgrave Memorial Hall and attended by over 90 residents of the parish (we believe this was the largest turnout of residents for any event at the hall for over 20 years) where an

open discussion took place followed by a further meeting of residents interested in forming a financial consortium and an offer was made to the selling agents for one of the two plots.

Fortunately towards the end of last year three parish residents stepped forward and bought the plots and the parish consortium was no longer needed and disbanded.

On behalf of all residents of the parish we would like to publicly offer our thanks for buying these plots of land.

However any rural town or village surrounded by fields is still vulnerable to illegal occupation and in early March this year Mr Prescott (our Deputy Prime Minister) is reported to have told councils to treat illegal campsites as special cases which will surely encourage people to ignore planning laws on green field sites.

Of course any landowner is entitled to obtain the best price possible for their land in exactly the same way as anyone else would do when placing a house on the market, and once the land is sold their responsibility for future usage of that land ceases and becomes the responsibility of the new owner. If our parish is to protect the environment and surroundings in which we all live we can only be sure to achieve this by taking a proactive approach rather than 'wait and see what happens' attitude.

With this in mind it has been suggested that the parish forms a 'Chalgrave Residents Association'

with members from all points of the parish. The purpose of the Residents Association would be for members to use their local knowledge of the immediate area in which they live and to report any inappropriate use of green belt or other useful information. More details with a meeting date and venue for anyone interested in forming a Residents Association will be issued in the next Chalgrave News. On another point, it was very disappointing that Chalgrave Parish Council took no lead in dealing with

the situation last year and that it was left to a few publicly spirited local residents to take matters forward. This point has been put to the Parish Council and they have given the assurance that if any similar situation was to occur again as soon as they were made aware they would take a proactive rather than reactive stance. Finally many thanks to all those residents who were willing to donate hard earned monies to the consortium's funds which thankfully were not needed on this occasion.



The Great Pumpkin Challenge



Those of you who studied the last issue will recall the challenge thrown down by the rector of Chalgrave Church Nick McNeil. He seemed of the opinion that by September, he could grow the largest pumpkin in the Parish!

Never ones to resist a challenge, we at the Chalgrave News have picked up the gauntlet and are currently in the process of nurturing our own giant. Just to ensure Nick is well beaten, we invite you all to grow a giant pumpkin and you will find in this issue your very own starter kit - two pumpkin seeds. Use these or find your own variety.

And now for the method:-

Pumpkins need to be grown in a frost free period since they will not germinate in cold soil. They are shallow rooted and should ideally be planted in a well cultivated bed in a sunny position with rotting manure. Use mulch around the plant to conserve moisture and suppress weeds. The tricks to ensure good growth are to cut all but one pumpkin off the vine to ensure it gets full attention and to lift the pumpkin off the ground and surrounding the base with straw.

It is also recommended to feed beer or beer slops to the plant (Charles Wells beer seems appropriate).

Incidentally, the record pumpkin is 1,446 lbs.

So, get growing and we are sure we can find a prize for the biggest parish pumpkin by harvest time.

New Years Eve Celebrations Around The Parish

Bring out the old and
bring in the new!
Or was it throw out the
empties and bring in the full!
Whatever the cry the 2005
New Year was celebrated with
traditional Chalgrave enthusiasm
in all parts of the parish.



Your Chalgrave News team - photography section - were despatched to various venues but regrettably soon (actually very soon) found themselves caught up in the celebrations and by time they surfaced the following day (or afternoon!) found no photo's had been taken!

Fortunately someone has come to our rescue with some pictures taken in The Plough.



What's Going On At County Hall??

Ever wondered whatever happens to the council tax we pay each year?

According to newspaper reports Bedfordshire County Council are employing 10 - yes 10! - accountants at around £100 - yes that's right £100 - per hour to look through the council's books to find where a large amount of unaccounted funds - no that's our monies - disappeared during 2003/04!! The news report goes on to state that it is anticipated that this work will continue until July this year - calculated on an 8-hour day and 5 day week the total cost of this exercise will be £800,000!!

We have a better and less costly solution - if the council's present accountants are so incompetent that they cannot do their jobs properly then replace them with accountants who can!!!

Never mind though, the County Council can just increase all our council tax this year to make good both the unaccounted funds - if they really have gone missing - and to pay for the squad of agency accountants.

What we don't know is who is responsible for this mess?? What we do know is who will be paying for it to be sorted out - every Bedfordshire council taxpayer!!!!

Did you think Bedfordshire County Councils spending (of your money) could not get worse? Don't believe it!

Did you know the Corporate Performance Assessment for Beds CC puts them at "poor". The bottom of a scale of 5. We understand they are attempting to become "weak" which is the next level up.

They placed an advert placed in The Guardian Newspaper on 23rd February 2005 for a Director of Cultural Change and Customer Care Service.

At a time when Bedfordshire County Council's finances (that means our monies) are in a shambolic mess is this really the best way to spend our council tax? Is this position essential to the future of the County Council or just a luxury that we cannot afford?

Why not, for instance, spend this money on traffic lights at the Hockliffe Road/A5 junction to prevent future accidents and possible deaths? This would be of real benefit to Bedfordshire. There must be a thousand and one better projects to spend this money on each year than the proposed new job position!

The salary being offered - only £100,000 per annum!

Around the Organisations

Book Club

We are still enjoying our book club meetings and the cakes, biscuits and chat are quite definitely an added bonus! We began the summer by reading the second of Helen Forrester's Mersey trilogy. The poverty encountered in Liverpool in the thirties provoked lively discussion about life - then and now. How different! We then went on to read 'Girl With the Pearl Earring' by Tracey Chevelier. This book, loosely based on a painting by the Dutch artist Vermeer, is very descriptive and moody. As one of our members remarked 'Nothing happens!' But it is our imagining of what might happen and the very real feel the author has for the era that makes this a really perceptive and well written book. Our latest challenge is 'The Catcher in the Rye' by JD Salinger. This is a classic that has been used for O levels and GCE exams for many years. The narrator, Holden Caulfield is a typical hormonal teenage boy - unsure about girls, tired of society's falseness and hypocrisy, and a loner. The story starts with him visiting New York after failing his exams and leaving school. After a series of mishaps and sexual encounters that go wrong, he tells his younger sister that he would like to be 'the catcher in the rye' - a person who catches children when they fall off the edge

of a cliff'. However this is a misunderstanding of the Robbie Burn's 19th century song which is about two people who meet in a field for sex. Again he gets it wrong! I am looking forward to hearing book club members views on this work as I found it, sometimes hilariously funny and sometimes full of pathos. My suggestion to you all is - if you've never read it - get a copy now!

My report for the book club's last issue was somehow mislaid - so am including it this time with the following update!

We have now read the first of the 'Ladies' Detective Agency' series, by Alexander McCall Smith and 'White Out' by Ken Follett, and are currently reading 'Bare Bones' by Alice Sebold. More about these in the next issue. We all enjoyed a wonderful New Year's spread when we lunched at the home of Dr. Gill Jones. Thanks Gill - greatly appreciated and enjoyed by everyone. Happy reading!

Linda Hadden

Parkfields School

As headteacher of Parkfields Middle School in Toddington, I am delighted to inform Chalgrave that the school has been included in Her Majesty's Chief Inspector of Schools' Annual Report for the academic year 2003/04 as one of the few particularly

around the organisations continued.....

successful schools in the country. The criteria stipulated that schools were judged in their Ofsted inspections to be extremely effective in providing high quality education and in ensuring that pupils achieved very well. The inspector felt certain the local community would join him in congratulating the staff and the pupils for achieving such an accolade.

January was indeed a month for celebration at Parkfields. At long last the school was able to open its new Science Studio. This project began nearly three years ago and there have been many frustrating moments since. The studio is an exciting and stimulating new concept building which offers a modern environment to teaching science in the 21st century. Included in the technology available are interactive whiteboards with which many children have by now already had their lessons. Certainly the many children that I have spoken to are extremely excited and inspired by the studio and will hopefully find it an innovative place in which to learn.

David Brandon-Bravo - Headteacher

Chalgrave Memorial Hall

The committee have held several meetings in the last six months - I can't believe how quickly the year is passing. Our members have been working hard - and it is with pleasure I

welcome Paul Whitton who joined us at the last meeting.

To date - the kitchen and store room have been given face lifts, including new shelving, fridge and freezer bought with money obtained from a grant from Beds Charities. We have undergone the usual annual inspections necessary to obtain a Public Entertainments licence. Our boiler has been playing up and is high on the list of priorities to have put right (not as easy as it sounds).

Apologies to any users who have not found the hall as warm as it usually is. We are currently awaiting the arrival and fixture of some stage lighting - also obtained with grant money, this should be an asset for many future events.

We would welcome some more bookings and are looking to set up our own web site. Pilates is a new venture and we hope the pilot run will lead to a regular booking. We are also hoping to start badminton sessions shortly. Has anyone NOT noticed the daffodils defying the snow and lifting up their heads proudly between the trees behind the front fence?

Please take an interest in your village hall - and attend the AGM. Even put your name forward for committee - do not be put off by the meetings - which brings me to a few thoughts on that subject::

'One by one we wander in, pull up chairs and take our places, a few jokes

around the organisations continued.....

perhaps, some chattering and then more serious faces. The meeting now is underway - voices getting stronger. I sneak a look at my watch - will it be much longer? Everything is twice repeated, sometimes more than twice repeated. As we work through the agenda (it seems elastic, this agenda). Becoming longer - never shorter. At last! I think we're finished - items ticked off one by one. But wait! Can we confirm exactly what we've done? This takes time - but it is the final reckoning - thirst is upon us and the Queens Head is now a-beckoning!' AGM June 20th Memorial Hall 8pm
Linda Hadden

The Chairman of the Parish Council writes

Parish Assembly

On the 19 April at 8:00 pm there is the Annual Parish Assembly. Everyone in the Parish is invited and it's an opportunity to meet your Council and to discuss any issues.

This year it will be an informal occasion with tea, coffee, wine and nibbles.

We will invite a spokesperson from the various clubs and organisations in the Parish to say a few words about what they have done in 2004 and will be doing in 2005.

We hope you can come along.

Luton Airport Flightpath

We are concerned with the proposed

change to the flightpath. The Parish Council was not consulted by Luton Airport, as they considered Chalgrave not affected.

We have looked at the proposal and think that we will be directly affected. Toddington were consulted - only a mile and a half away!

We have written to Luton Airport on two occasions with our concerns with no response. We have written again to the airport and now received a reply implying that it's not the responsibility of the Airport to consult Chalgrave!!

Our MP, Andrew Selous, is campaigning very hard to get the proposed flightpath changed so that it is in a more northerly direction around Leighton Buzzard rather than over it.

This will benefit the Parish. He feels 'that there is a possibility that the airport may listen to our remonstrations'.

We are supporting his view.

Planning

We are continually concerned about all planning issues whether it's on a large scale - as in the planned housing for this region - or on a small scale.

Any planning application is referred to the Parish Council and we can put forward our view on behalf of the Parish. We can act if there is any abuse of the planning regulations and we are vigorous and speedy in making sure there is compliance.

Vandalism

There has been - again - mindless

around the organisations continued....

damage to the bus shelter on Wingfield Road. This will be repaired in due course.

Graffiti has appeared again in various parts of the village.

It has been reported that a number of motorbikes have been speeding along the Wingfield/Tebworth Roads.

Also, there have been concerns raised about the same vehicles going down The Lane on a regular basis.

All of the above have, or will be, reported to the local police

Millennium Award

We have received nominations and will be announcing the winner of this award in due course.

Tebworth Village Signs

Having now decided on the exact location for the new signs (considering visibility, safety, security, etc) they

will be going up within the next few weeks on the entrance to the village along the Toddington/Hockcliffe Roads.

Notice Boards

We have secured funding for replacement notice boards for Tebworth and Wingfield. They are on order and will arrive in eight weeks time.

Traffic Calming

Our speed sign will reappear again to remind drivers of the 30 mph speed limit. There seem to be a number of heavy lorries coming through Tebworth on their way to the Sundon tip. We will be finding out if this is an 'official' route - or a short cut.

The minutes of our meetings are posted on the notice board (and will, eventually, be on our web site).

Phil Parry Chairman (875169)

Leslie (Les) Mead

1951 - 2005

It is with great sadness that we report the loss of

Les Mead of The Old Woodyard, Tebworth.

Les was born in Luton but raised in Eddlesborough before moving to Tebworth in 1990.

He worked for a number of years at Rugby Cement in Kensworth and Castle Cement in Pitstone before moving to Boss Trucks in Leighton Buzzard and then to QRS as a quality controller.

A keen football fan and season ticket holder at Luton Town, Les was also a keen supporter of local events, particularly the annual Chalgrave Games where he regularly helped in running the beer tent.

Les recently married Lesley and our thoughts and condolences together with those of his many friends around the Parish are with her and the family at this very difficult time.



40000 Houses

Last year the Chalgrave News wrote to various interested parties seeking their views on the government's proposed building of 40,000 new homes on the outskirts of Houghton Regis which will bring the edge of that new community to within a couple of hundred yards or so of Chalgrave Parish boundary.

At the time of going to press in our last issue we only had two replies and we printed both - one from our Member of Parliament Andrew Selous and the other from the Chairman of South Beds District Council stating that they were unable to comment but would get the Portfolio Holder - Councillor Tom Nicols - to respond.

Guess what? Nothing further has been heard from South Beds! Not really surprising is it? Also we have never had any response from the Chairman of Bedfordshire County Council - Rhys Goodwin our County Councillor - Norman Costin our District Councillor or Chalgrave Parish Council.

However our invite letter to Tony Blair was passed on to the Office of the Deputy Prime Minister and we have received a reply dated 10th November 2004 from Jeff Rooker as follows: -

"Thank you for sending a copy of 'Chalgrave News' to Mr Blair and for the invitation to contribute to the debate on house building in South Bedfordshire in a future issue of your publication. As Minister for Regeneration, I am pleased to have this opportunity to respond on behalf of Government.

I have taken a keen interest in the proposals for growth in the Milton Keynes and South Midlands area, which includes parts of Bedfordshire, and welcome the opportunity to contribute to a balanced debate. As you and your readers will be aware, an eight-week public consultation on the governments proposed changes to plans to provide additional homes in the growth area is currently underway.

The first secretary of State's Proposed Changes to the draft Milton Keynes and South Midlands Sub-Regional Strategy takes forward many of the changes

40,000 houses continued.....

recommended in the Panel's report of the Public Examination into the strategy, held earlier this year. The Strategy identifies the level and broad locations of new housing - and target employment levels - required to meet the growth area's needs to 2021. It proposes that 169,800 new dwellings should be built across the growth area, of which 45,800 are to be built in Luton and the Bedfordshire growth towns - 19,500 in Bedford and the northern Marston Vale and 26,300 in Luton, Dunstable, Houghton Regis and Leighton Linlade. It also proposes that land should be safeguarded for a further 15,400 homes to be built in the Luton growth area over the period to 2031.

At the launch of the consultation, I explained that the growth strategy was not just about providing much needed homes for future generations. Housing growth will be accompanied by supporting infrastructure that will benefit existing communities, assist regeneration and provide opportunities to enhance access to greenspace and the local countryside. Infrastructure and amenities schemes already supported by the Office of the Deputy Prime minister in MKSM include £5 million for new roads in and around Bedford, and £6.6 million on green spaces projects, including enhancement schemes for Dunstable Downs and woodland areas in the Forest of Marston Vale.

The government recognises that, because the South Bedfordshire Green Belt boundary is tightly drawn around existing built up areas, some loss of land in the Green Belt is inevitable. The exact location of the areas released will be determined through Local Development Documents, prepared by the local planning authorities, who will be expected to replace such losses. Whilst government believes the scale of unmet local need provides a powerful justification for the release of Green Belt land, we remain keen to listen to the views of those who live and work in the growth area.

Both the Milton Keynes and South Midlands Sub-Regional Strategy and the Schedule of Proposed Changes are available on the Government Office for the East Midlands website at www.go-em.gov.uk and the consultation period closes on December 23rd (2004)".

The final Strategy, incorporating any further changes judged appropriate in the light of responses received, will be published in Spring 2005.

Auntie Agnes's Problem Page

Personal problems resolved with a smile

It is with considerable regret that I once again have to apologise for a misprint in one of my replies in the last issue of The Chalgrave News.

You will remember that one of our local parish organisations wrote to me seeking my advice on an event they were planning to put on this spring.

They wanted to stage a traditional old festival, which would be enjoyed by everyone who attended.

And what could be more traditional at this time of the year than that old favourite May Pole Dancing.

It is with much regret that our proof reading team failed to notice the misprint in my reply and the Gay Pole Dancing by the men of the village, should have of course read May Pole Dancing.

Anyway I understand that the committee have held a trial run already in preparation of the forthcoming May Day celebrations, which has turned out to be a great success.

It has therefore been decided by the committee members that the event will go ahead - the only difference being that it will now be held on the stage inside the village hall so we will not have to worry about the weather!

Auntie Agnes has been pleased to be of help and I wish the committee every success with the festival.

Well until our next issue - goodbye dear readers.....

A Fairy Tale by Peter Hadden

Once upon time, in land far across the sea, a baby was born, a baby boy. As the mists of time clear, we see a little boy doing well at school. The teachers, though pleased with him generally, were becoming more and more worried about his size. He was growing into a giant. Stupid people made fun of him but this was a giant that did not suffer fools easily and he quickly squashed them. Many years passed and the giant grew rich and settled down with his wife in a tiny village in a strange land far from his place of birth. This was the place that he had chosen even though he had the entire world to choose from. He loved his new home and the people there and he embarked on a series of things to safeguard this place against the future. He was generous and bountiful and all the people loved him.

A violent storm with thunder and lightening covered the land. Two or three of the villagers met and after long discussions made a decision on a subject close to their hearts. Slowly the storm passed away only to be replaced by a fearful stamping of a giant foot causing the earth to tremble. The giant was not happy and even though he spoke in a whisper his voice was heard all over the world. He told the villagers that they were wrong. They told him that he was wrong. We demand the right to do as we decide and I demand the right to do as I decide. How petty and childish. How sad. An argument that cannot be won because at the end of the day, might is right. What the giant gives the giant also takes away.

Peter Hadden The Lane

John Alec Boyson

1932 - 2005

Sadly we have to report the death of John Boyson on
31st January aged 73.

John was born in Folkestone and volunteered for service in the RAF where he served as a signaller and cryptographer in Aden during the violent troubles that marked Britain's withdrawal from its Middle East bases.

In later life John and his wife Josie ran the Ram Public House in Leighton Buzzard before moving to St. Mary's Close in Tebworth about 20 years ago.

John could mostly be found in the public bar of the Queen's Head along with his old friend Ernie Stringer but with a crossword always close at hand, still practising his cryptography.

ELDERFLOWER CORDIAL

Try making this delicious drink using the fresh flower heads from the elder bushes. Collect large flowers which are only just starting to open for the strongest flavour.

Serve mixed with sparkling water, a few ice cubes and finish with a slice of lemon.

The perfect drink for a summers evening.

30 Elderflower Heads

2 Lemons

2 kgs sugar

30 g Citric Acid

2 bottles with screw caps

- Strip the flowers off the main stalk and drop into a bucket or other large container. Scrub and slice the lemons and add together with the citric acid and sugar. Boil 1.4 litres of water and pour over the flowers and the rest of the ingredients. Stir to dissolve the sugar, cover with a clean cloth and leave for 5 days. Stir daily. Do not make airtight. Line a colander with double muslin and set over a large mixing bowl or another bucket. Scald the muslin and container with boiling water and discard the water. Tip the elderflower mixture into the muslin and strain. Pour into sterilised bottles and store in fridge for up to 3 months.

To preserve for longer, half fill plastic bottles and freeze.

