

WVS has moved to new undercover premises - still in Bletchley (see address below).

\* Don't forget our special offers on servicing and repairs for local residents. Call John Parker on the number below. \*

## WRIGHT VEHICLE SOLUTIONS

**RAC** Inspected vehicles

- UP TO 80 VEHICLES IN STOCK AT ALL TIMES
- FINANCE AVAILABLE
- PART EXCHANGE WELCOME



[www.wvsgroup.com](http://www.wvsgroup.com)

**01908 366668**

Dane Road, Bond Avenue, Bletchley,  
Milton Keynes MK1 1JQ

**WVS**



# CHALGRAVE NEWS



*The free community magazine delivered to homes and businesses in the Chalgrave Parish*



Publication No.33 November 2011

## Dates for Your Diary

Day/Date	Event	Location/Contact	Time
3rd Tuesday of each month	Parish Council Meeting	Memorial Hall	7.30pm
Every other Sunday	Quiz Night	Plough Inn	9.00pm
Mondays	Dominoes	Plough Inn	
Mondays & Fridays	Live entertainment	Queens Head	7.30pm
Wednesdays	Darts	Queens Head	
Thursdays	Dominoes	Queens Head	
Weekdays	Book Club	Linda Hadden	
Thursdays	Zumba Fitness	Memorial Hall	7.00pm
2nd Tuesday of each month	W.I.	Memorial Hall	8-10pm
Saturday 17th December	Santa Float	Villages	
31st December	West Charity deadline	Norman Costin	
Saturday 24th March	Quiz Night	Memorial Hall	TBC
April - date TBC (see next edition)	Senior Citizens Lunch		TBC

*Front Cover: Autumn in Chalgrave*

### Deadline for next edition: 16th January 2012

Please submit entries by email to: [thechalgravenews@live.co.uk](mailto:thechalgravenews@live.co.uk)

Or by phone to: Emma: 877327/ Su: 873963 / Debbie: 877149

*The Chalgrave News team produce The Chalgrave News in good faith and do all we can to ensure that no offence is caused to any individual or organisation.*

*We also reserve the right not to publish articles and contributions submitted to us if they do not comply with our policy.*

## Editorial

Well, the Summer came and went in fits and starts and now we are well and truly into the damp and cold of Autumn/Winter. Thankfully it's not been as cold as it should be and so the heating hasn't had to be cranked up to full capacity just yet!

As a reminder of the summer, the Garden Competition winners and photos of their efforts are on pages 14-15.

Halloween and Bonfire night have been and gone and a round up of their fun is on pages 16 & 17.

Now starts the countdown to Christmas (*30 sleeps as we went to press!*). To get us into the Festive spirit, you will find details of the travelling crib on pages 8-9 and the Christmas Church calendar on page 10.

It just remains for us here at the News to wish you all a very  
**MERRY CHRISTMAS AND HAPPY NEW YEAR**



*Remember to post your Christmas cards on time.*

*Last posting dates for UK are:*

1st Class: Tue 20th December

2nd Class: Sat 17th December

Standard Parcels: Wed 14th December



# Chairman of the Parish Council

## Planning

As you may know we are very concerned about the government's National Planning Policy Framework which seems to give the green light for developers to build houses wherever they want. The Policy proposes a presumption of 'yes' to any planning application. You may have seen the widespread opposition to this proposal which has worried the Government – hopefully enough to change its mind. We trust that Andrew Selous, our local MP, will oppose this proposal. Andrew has supported us in our fight to protect the Green Belt.

Now that the A5/M1 Link Road seems to have the go-ahead, we are pressing for infrastructure to be in place before any new house building North of Houghton Regis.

We are also keeping a very close watch on proposals for new traveller sites in Central Beds.

Closer to home, the continued work at the Chalgrave Golf Club concerns us. They have applied for a time extension and for retrospective planning for some work already carried out.

We have invited Steve Rumball the Managing Director of the Club to attend our November meeting.

## Policing

We have asked Central Beds police to attend a Parish Council meeting to explain the changes that will be happening to local policing. We have always had a good relationship with our Rural Beat Officer who has attended our meetings and the Parish Assembly. We have been told that he is no longer able to attend our meetings.

## Roads

We have asked for the brambles to be cut back at the end of Chalgrave Road opposite the Church to give a better and safer view for drivers. The hedge opposite has been cut back to allow drivers coming from the Church to see oncoming traffic.

We are pressing ahead with trying to get a 20mph limit through Tebworth – and a lorry ban once the A5/M1 Link Road is completed.

As always, you are welcome to attend any Parish Council meeting.



Finally, we are very sorry to see the departure of **Tony and Jean Cornes** from this Parish to live in Suffolk.

They have lived in Wingfield for 23 years and have both been fantastic members of our community. They have been keen supporters of Parish activities and events and they were both on the original editorial team of the new Chalgrave News back in 2005.

Tony has been a Parish Councillor for many years and was always great at finding grants. His crowning achievement was getting Lottery Funding for the New Memorial Hall.

The Hall will be his legacy - as well as his work on getting a 30mph speed limit through Wingfield.

Tony was also involved with the Memorial Hall Committee, Senior Citizens Committee, Sports Club, the Cricket Club, the Santa Run, the Village Games, keeping the Queens Head and Plough in profit, a leading light in many of the Chalgrave Concerts and Murder Mysteries and much more. Jean was a familiar figure around the Parish on her horse or in her pony and trap.

We wish them every happiness in their new home.

## A5-M1 link road gets cash boost from developers

Construction of the A5-M1 link road in Bedfordshire could be brought forward following a £50m cash injection. The Department for Transport has now agreed to restart the public inquiry for the road, which was suspended due to restrictions on government spending. The developers have contributed £45m to the costs and £5m has been pledged by Central Bedfordshire Council. Construction could now start in 2014 instead of after 2015.

## Improve journeys

The planned new 2.9-mile dual carriageway will run east from the A5 north of Dunstable to the M1 at a new junction (J11a). The scheme is intended to improve journey times by removing the need for long distance traffic to travel on the A5 through Dunstable. The £45m investment from developers Lands Improvement Holdings and Friends Life Company, combined with the council's previous commitment to allocate money from Growth Area Funding, reduces the level of government investment needed. Roads minister Mike Penning said: "I have said that private investment can help progress transport projects and the £50m contribution to the costs of the A5-M1 link road is an example of this." The third party funding significantly improves the return on public investment for this scheme and I am pleased to announce that the public inquiry, which was suspended last year, can be re-started."

The inquiry is expected to be held early in 2012.

## View from the House: Andrew Selous MP

Andrew Selous is MP for South West Bedfordshire and can be contacted on 01582 662 821 or [selousa@parliament.uk](mailto:selousa@parliament.uk)



### Getting our economy going

At the beginning of last month unemployment figures showed there were 2,306 people claiming Jobseekers Allowance in South West Bedfordshire. We need to do everything we can to get that number down and the significant and multiple investments announced in our area recently will certainly help. We have £150 million committed to building the A5-M1 link, a £16 million rebuild of All Saints Academy in Dunstable which educates many Houghton Regis children too, a brand new University Technical College opening next year in Houghton Regis (the only one in the whole of the East of England) and a new £5 million business incubation unit in Dunstable. This gives great hope for the future to our area.

A business I visited on the Woodside Industrial estate in Dunstable will be taking on another 150 staff as it expands next year, so it is not all doom and gloom. Did you know that 80% of all the naan bread made in the United Kingdom is made in Dunstable? I am well aware that some businesses have closed and others are laying off staff, but we must not talk ourselves down as so much in business depends on confidence.

By 2014 we will have the lowest rate of corporation tax in the G7 and some huge international companies like the advertising giant WPP will be moving back to the UK from Ireland as Britain shows the world that it is open for business. Smaller local businesses will be pleased to know that the small business rate relief holiday has been extended for another year so that it remains doubled until the end of September 2012.

We are also creating 250,000 new apprenticeship places. I have taken on an apprentice myself to give a young person that vital first job opportunity. We are also creating 100,000 work experience places and I will be providing work experience for a local young person nominated by Jobcentre Plus next month.

We are also launching the New Enterprise Allowance to help up to 40,000 businesses get up and running. We are supporting work clubs and enterprise clubs across the country. Our reforms to the welfare system will make sure that people are always better off in work than on benefits. We are also getting a grip on immigration and sending illegal immigrants home so that more British people can come off welfare and into work.

## Remembrance Service 13<sup>th</sup> November

The annual Parish Remembrance Service was held on Sunday 13<sup>th</sup> November at the Memorial Hall and was conducted by the Vicar of Chalgrave, Anne Crawford, with Peter Freeman playing the organ.

As usual, the service was well attended and wreaths were laid on behalf of the Parish Council, the Sports Club, the British Legion, the Memorial Hall and the Senior Citizens Committee. Also, a bunch of flowers was left by the memorial with no name on it.

If anyone knows who left it and for whom, please give that information to the Chalgrave News.

The Roll of Honour for Chalgrave is as follows:-

### Those who fell in the 1<sup>st</sup> World war

Albert Bird  
Penrose Frank Cole  
Albert Oliver Emerton  
Leonard Fensome  
James Wesley Foster  
Arthur John Kingham  
Albert Rickett

### Those who fell in the 2<sup>ND</sup> World War

Harry Keen  
Peter Ronald James Kingham  
Fredrick Higgs  
Vivien Prudent  
George Mawson Holmes



Many of Chalgrave's young people were in attendance at the annual Remembrance Day Parade through Toddington Village, representing local clubs and organisations.





# Welcome from All Saints Church

All Sunday Services at 9.30am are Sung Holy Communion.

On the first Sunday in each month we have a shorter service, sometimes accompanied by a band, and as the service is child friendly as we do not have a Sunday School.



## Travelling Crib at All Saints



Last year All Saints began what we hope will become a well-loved tradition in our villages, we took part in the beautiful Advent tradition of having a Travelling Crib.

The Travelling Crib originates from Mexico where it is called 'Los Posadas' which means inn or lodging, and has been growing in popularity in this country over the last few years.

The idea is that every evening during Advent a small group of pilgrims re-enact Mary and Joseph's journey to Bethlehem, dressing up as the Holy family and travelling by pre-arrangement to find shelter for the night, visiting homes around their village. On Christmas Eve the pair reach their final destination – the parish church – where midnight mass is celebrated and the Christ-child is placed in the crib.

We took part in 'Las Posadas' last year by taking knitted figures of Mary, Joseph and their donkey on a journey around the villages, with families, schools, doctors surgery, library etc, taking it in turns to offer hospitality to the couple each night during Advent. Night after night the figures are taken from one host home to another. The hospitality, the lighting of a candle and a very simple act of worship are shared, and there is time to reflect on what Advent means.

For many people who took part last year the experience was very moving and brought with it a real sense of preparation for Christmas.

The figures may be cuddly and child-friendly, but their ability to bring a sense of the holy and numinous into homes was unexpected and a welcome relief from the usual frantic activity which surrounds the days leading up to Christmas Day.

At each 'hand-over' two groups of people are linked, one in hosting (the inn keepers), the other in visiting (the pilgrims), and this experience is for everybody, for people of all ages, for those who live alone as well as for couples and for those with children.

There are a few words of prayer to be said by the family who are taking the couple on to the next part of their journey and by the family who are receiving them, and an advent candle is lit. It can be made even more special if the innkeepers (the family receiving Mary and Joseph for the night) can offer refreshment to the weary pilgrims – i.e. tea/squash, biscuits, mince pies etc. It's a lovely way to get to know people and anyone can take part whether they come to church or not.

If you would like to take part this year then please speak to Bev 210161 or Rev'd Anne 872298 and you will be added to the rota on a convenient date for you. The crib will be blessed at the Advent Songs of Praise service in the village hall on Advent Sunday 27<sup>th</sup> November and are brought back to church at the crib service on Christmas Eve at end of their journey ready for the birth of Jesus.

I hope you enjoy travelling through Advent with Mary and Joseph, and find that it enhances your anticipation of Christmas and the excitement of receiving again the new life which comes to us in Christ.

Happy Advent!

Anne





## *A Merry Christmas and Happy New Year from All Saints Church, Chalgrave*



### Church Calendar

<b>Sunday 27<sup>th</sup> November:</b>	Songs of Praise for Advent with Blessing of the Travelling Crib, Tebworth Memorial Hall 6pm (followed by Mulled Cider and nibbles)
<b>Friday 2<sup>nd</sup> December:</b>	Messy Church, Wilkinson Hall 3.30-5.30pm
<b>Saturday 17<sup>th</sup> December:</b>	Carols by Candlelight, All Saints Church 7.30pm
<b>Monday 19<sup>th</sup> December:</b>	Carols on the Green, Toddington 7.30pm
<b>Saturday 24<sup>th</sup> December:</b>	Crib Service, All Saints Church 5pm
<b>Saturday 24<sup>th</sup> December:</b>	Midnight Mass and blessing of Crib at All Saints Chalgrave 11.15pm
<b>Sunday 25<sup>th</sup> December:</b>	Christmas Day Eucharist and blessing of crib and carols at St George's Toddington. 10am (Joint service with All Saints, Chalgrave)

### Carols By Candlelight

Annual Service of Carols and readings, **Saturday 17<sup>th</sup> December 7.30pm**  
All Saints Church, Chalgrave Organist and Musical Director - Mr Peter Freeman

Tea, Coffee, and mince pies after the service

### What's happened over the last few months?

#### New Sign

We have a new sign which has been erected with the kind permission of Chalgrave Manor Golf Club. Hopefully this will make people aware that the church is open for business on a Sunday morning at 9.30am, and all are welcome.

#### Dry rot

Dry rot was discovered in the church, under the Victorian Choir stall, in the kitchen and behind the Organ. All the stone work, has been treated, the organ has some new wood work, but we still have to re erect the choir stall and relay the floor. We are hoping to lay a York stone floor, but this is still ongoing.

#### All Saints Church Fete

As most of you may know Kevin McCloud of Grand Design fame, is a local person, who went to school in Toddington. We approached him to help with the restoration of the church, and he was only too happy to help and provided us with a film for the fete day, and a cheque for work at Chalgrave. He talks about his time as a small boy and the bike rides to the church, and he then talks about the great prize we have in the church and its wall paintings, and how important for us as a community to preserve the church for future generations

We all had a good day, Alan Crawford and Derm Crowe spent the day getting

wet in the stocks, we had books, cd's, children's games, face painting, BBQ, cream teas and of course Peter Freeman playing a wonderful selection of music from West end shows.

In all we raised £426.52 on the day, a further £139.83 from gift aid and then £82.50 from the cake stall the previous weekend.

This has all been spent and much, much more with the dry rot. So, if you have any ideas for fund raising, or would like to help, then please give us a call on 01525 210161.

#### Message from Rev'd Anne

Following the recent discovery of Dry Rot in various parts of church, successful treatment has now taken place. The cost of maintenance and repair of a 12th century building is crippling at the best of times, but when we are faced with the unexpected financial burden of treating such a potentially serious problem as dry rot, the burden is overwhelming. We are very grateful for all the financial help given to us over the years and ask for your continued prayerful support as we struggle to provide not just a beautiful, safe building but also a lively and effective Christian presence and ministry in our villages.

If you would like to contribute to the costs of All Saints Church then please contact either of the churchwardens or myself. Thank you.



# Let's Talk Together

## Community Meeting for the Leighton Rural Area

**Tuesday 6 December**

**Eaton Bray Village Hall**

Church Lane, Eaton Bray, LU6 2DJ

**7:00pm – 9:00pm**

7:00pm - 7:45pm **Talk** to a range of service providers including your local policing team, Councillors and other agencies.

8:00pm – 9:00pm **Join the debate.** Discuss local issues, solutions and help decide the community safety priorities to be tackled.

For further information visit  
[www.centraltogether.org.uk](http://www.centraltogether.org.uk)

Your  
Views  
Matter

Find  
Solutions

Work  
Together

Improve  
Your  
Neighbourhood

Central  
Bedfordshire  
Together

## Local Area Transport Plan

- Do you want to see better local walking and cycling facilities?
- Could there be better information on local bus services in your area?
- Are there any local traffic issues that you would like to see sorted?

Local residents are being asked their views on future transport provision in Chalgrave as part of a **Local Area Transport Plan** being produced by Central Bedfordshire Council.

The Plan will set out how the authority wishes to tackle local transport issues in Chalgrave in the future. We want your views to be at the heart of our plans. Over the next few months, residents will have the opportunity to meet with Central Bedfordshire Council representatives to discuss transport issues and improvements in Harlington.

Come along to one of the following locations and speak to Central Bedfordshire Council transport officers:

Location	Date(s)	Times
Toddington Library	Thursday 12 <sup>th</sup> January 2012	10:00 to 18:00 (officers available until 16:00)
	Friday 13 <sup>th</sup> January 2012	14:00 to 18:00 (officers available until 17:00)
	Saturday 14 <sup>th</sup> January 2012	10:00 to 13:00

Reference copies of the Draft Local Area Transport Plan, along with some survey forms, are available in the Parish Office, and your local library.

- You can also submit your comments online on the Lets Talk Central website ([www.letstalkcentral.com/transport](http://www.letstalkcentral.com/transport)).
- Alternatively, email your comments to the Transport Strategy Team on [myjourney@centralbedfordshire.gov.uk](mailto:myjourney@centralbedfordshire.gov.uk).
- Or, send your comments via post to: FREEPOST RSJS GBBZ SRZT, Local Area Transport Plan Consultation, Central Bedfordshire Council, Priory House, Monks Walk, Chicksands, Shefford, SG17 5TQ.

**Whatever way you choose, the deadline for comments is Friday 3<sup>rd</sup> February 2012.**

For more information about this consultation or to speak to a transport officer, contact our **Transport Strategy Team on 0300 300 6516.**



# Garden Competition

The villages were awash with colour, even if the summer months themselves were often a bit grey, and the News team were out and about with our camera admiring all your green fingered efforts.

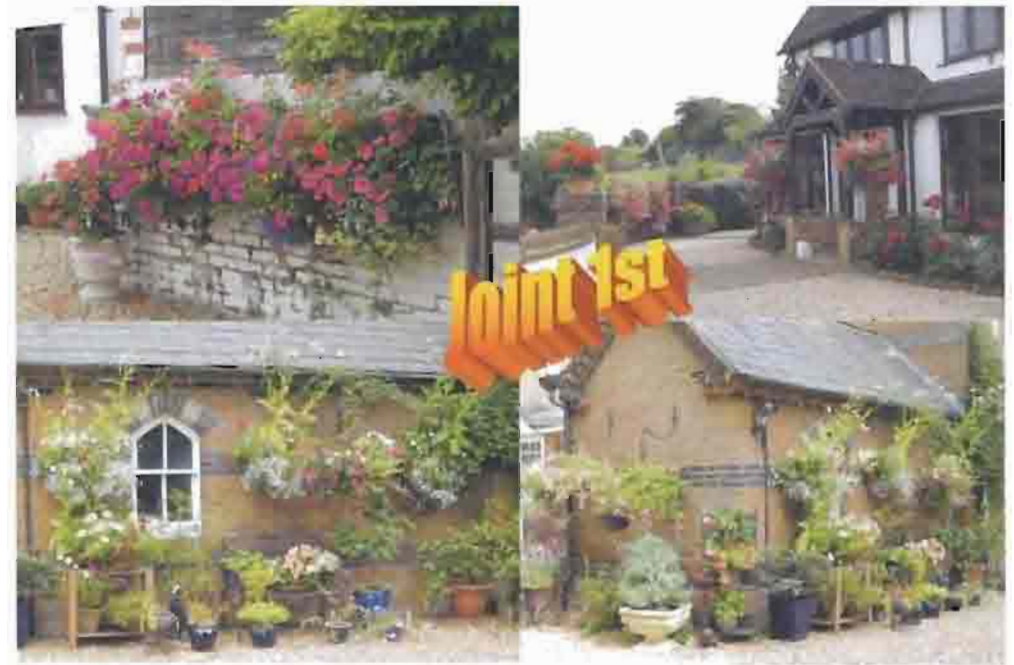
You all did Chalgrave proud. As such we found it very difficult to choose an overall winner and have therefore decided to award prizes in two categories: Best Front Garden and Best Pots/Baskets, with three winners in each category.



For Front Gardens, first prize is awarded to Mr Freeman for his fabulous floral display that was a riot of colour. Second prize goes to the Thorogood family whose garden is a real family effort and includes a planted wishing well and a couple of watchful gnomes!



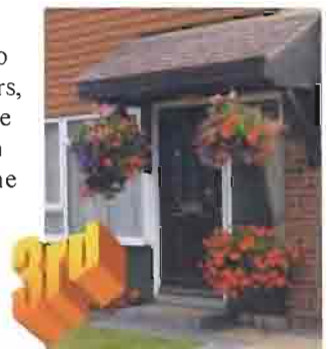
And finally, the third prize goes to Mr Doris for his lovely neat garden that also includes pretty planters and baskets.



For pots/baskets, joint first prize goes to Paul & Debbie Whitton (top) and Chris & Mick McDonagh. Both having plentiful and colourful planting. 2nd place goes to Mrs Yearly for her eyecatching Petunias and third to Mr Bowen for his striking baskets and planter.



Well done to all our winners, prizes will be issued upon delivery of the magazine.



Congratulations must also go to Roger & Theresa at The Plough, and to Mr & Mrs Wadsworth for their ever fabulous displays that we can all enjoy as we walk and drive past.





# Halloween



Ghouls and Ghosts, skeletons and vampires prowled the streets of Tebworth and Wingfield this Halloween in the hope of scaring residents into parting with sweet treats.

Do you recognise any of them?



# Queens Head Fireworks

**Thanks Colin, it went with a bang!!**

We had a good crowd and the bonfire was lit (with some difficulty) at around 7.30, with help from Steve, Ray, Ian, and Beth.

Ray kept feeding the fire pallets until around midnight when the diehards were still sitting around drinking and chatting. Thanks to Chris for the Music in the Bar.

Thanks must go to Steve who let the fireworks off, a really good display again, and to Clive and Jenny on the BBQ and Phil the Sparkler and Collection Bucket man.

Thanks also to everyone who helped with the collection of money through the Football cards and previous BBQ's, particularly Kevin & Jacqui and those who helped fill the bucket on the night,.

Here's to the next time!



Too noisy!!!!

## Special All Our Yesterdays - No 6

Colin celebrates  
30 years at the  
Queen's Head on  
the 8th of  
December.  
Sadly Liz died in  
2001



*Colin and Liz at the Queens head Circa 1983*

We feel we have  
been so fortunate  
to have such a  
great landlord  
and past  
"landlady".

Most of you probably know Colin's acting career spanned many years. He had star billing alongside Les Dawson and Ken Dodd in many radio shows, and played some 80 plus parts in TV series including Bergerac, Heartbeat, Z cars, and Coronation Street, where he played PC Jimmy Conway. In 1993 he had a big part in "The bullion boys" with David Jason. Google him and you will find many entries. He is great mates with Ken Dodd and visits him regularly.



What most maybe don't know is that Liz was also a fine actress, appearing in many west end shows and rep as Elizabeth Ashton.

Colin was born as Colin Edwin Thompson. The name Edwynn is not Welsh, Scottish or Irish or any other foreign name. It was made up. When he became an actor he changed his name. His idol was an actor called Ed Wynn and he changed his name so it had the same spelling.

It's not just Colin's corny jokes and his singing that we all love but his generosity of spirit!

**Re: A.O.Y. No. 6.** I said it was the 1st footpath on the left. Of course it was the 2nd.

I said the girls were Janet Cooper, Margaret Harris and another girl. Jackie Cherry tells me the girls are, herself, Jackie Cherry [nee Powis] in the middle, Janet Cooper at the end and her sister Susan Cooper sitting.

If you have and more information or comment on any of this series contact Ken Green on 01525 874107 or [kenandlyn@tinyworld.co.uk](mailto:kenandlyn@tinyworld.co.uk)



## CHALGRAVE NEWS



### Advertising And Useful Contacts

To advertise in the Chalgrave News, please contact  
the Editorial team via our email  
[thechalgravenews@live.co.uk](mailto:thechalgravenews@live.co.uk)  
Or

01525 877327 / 01525 873963 / 01525 877149

*When contacting an advertiser, please  
remember to mention you saw them in the Chalgrave News*

Advertising - November 2011



We look at the whole  
of the market !!

• Independent Mortgage &  
Financial Advice

• Advice on family and  
mortgage protection -

Life  
Critical Illness  
Income Protection  
Accident & Sickness  
Unemployment  
Buildings & Contents

we have access, and can also  
provide -

• Pension & Investment Advisers  
• Conveyancers  
• Loans & Commercial finance  
• Debt Management, IVA

Think carefully before entering other details against your home  
you could have your home repossessed if you do not keep up the  
repayments on your mortgage.

## Stuart Brown Mortgage Services

call Stuart on 01525 877650

advice@sbms-online.co.uk  
www.sbms-online.co.uk



local, friendly, professional

stuart

**glover and Co**  
Accountancy and Tax Solutions

Accounts Tax CIS VAT

Bookkeeping Payroll

Business Start Ups

Chartered Accountants

Unit 2 Hockliffe Business Park,  
Watling Street,  
Hockliffe, Beds LU7 9NB

t: 01525 210085 f: 01525 210095

e: info@lindseyglover.co.uk

w: www.lindseyglover.co.uk

## PIANO & KEYBOARD TEACHER

ABRSM GRADES FOR  
PIANO & THEORY

I teach all levels of piano  
and all types of music

For further enquiries  
please contact  
**CATHERINE MOORE:**  
**01525 288180**

Advert 2



Rugged & Tough



Professional Workwear and Country Wear Superstore

DEAR SANTA, I AM NOT GOOD A DROPPING HINTS, SO TO MAKE IT A BIT EASIER THIS YEAR FOR YOU, I HAVE TICKED THE ITEMS WHICH I WOULD BE REALLY PLEASED TO GET OR SOMETHING  
SIMILAR IN MY CHRISTMAS STOCKING THIS YEAR...HOPE THIS HELPS. JUST POP INTO RUGGED & TOUGH & YOU WILL FIND THAT PERFECT GIFT. ALL THE BEST...



From Base-layers to Boots, at Rugged & Tough this year, you'll find his perfect Christmas Gift

HOCKLIFFE



Open  
7 days  
a week

Barbers Shop Open  
Tuesday, Thursday &  
Friday 9am-5.30pm  
Saturday 9am-2.30pm

**Rugged & Tough**  
(Opposite Post Office)  
Hockliffe, Bedfordshire LU7 9LS  
t: 01525 211498  
e: sales@ruggedtough.com  
www.ruggedtough.com

Advert 3

## Eye care and eye wear for all the family

- Professional, friendly, qualified opticians and contact lens practitioners
- Private, NHS and corporate eye examinations (*eye care vouchers accepted*)
- All contact lenses supplied and fitted
- Designer sunglasses: Oakley, Chanel, Rayban, Dior, Gucci, Maui Jim and more
- Range of children's frames

**Buy One Get One Free  
with every complete  
pair purchased**

Pop in anytime, a warm welcome always awaits.

Browse and try on with  
**no obligation and no hassle.**

18 High Street Toddington LU5 6BY

**01525 875099**



Make your house a home with blinds and awnings from Vansar Blinds...

- \* Local family run business
- \* Large range of fabrics & colours
- \* Choose in the comfort of your own home
- \* All blinds made to measure
- \* **FREE MEASURING & QUOTATIONS**

**For a Friendly and Reliable Service  
Call**

**01525 220477 or 01582 699565**

[www.vansarblinds.co.uk](http://www.vansarblinds.co.uk)

## Child-Minding

I am a responsible and mature girl (Yr 9 student), available for child-care in the evenings/weekends.

I live in Tebworth, and so will be able to easily get to homes in Tebworth and Wingfield.

**£5 an hour**

Contact: **Imogen Parry**  
on either:

**01525 875 169**

or

**07592773149**



**CUT & FINISH RANGE  
FROM £27 - £47**

We welcome you to experience our glamorous studio incorporating different mood areas to offer a more deluxe service.

Our fully qualified hair stylists understand that style and colour is uniquely personalised to suit your features, compliment face shape, skin tone and individual personality.

Please telephone for further information, help and advice.

Sleek & effortlessly sophisticated  
**THE 'STUDIO LOOK'... TURNS HEADS**

**8 MARKET SQUARE, TODDINGTON, LU5 6BS**  
**01525 876 778 WWW.PAR-SNIPS.COM**

### OPENING HOURS

MON	CLOSED
TUES	9AM - 8PM
WED	9AM - 8PM
THU	9AM - 8PM
FRI	9AM - 7PM
SAT	8AM - 5PM
SUN	CLOSED

# NEVILLE Funeral Service

Independent and Family Owned

Private Chapels of Rest  
Flower and Memorial Services

Pre-arrangement and Pre-payment advice  
24 hour emergency service

NEVILLE HOUSE  
MARSH ROAD  
LEAGRAVE, LUTON  
01582 490005

THE OLD CHURCH  
FLITWICK ROAD  
AMPHILL  
01525 406132



# M Greenwood Roofing Ltd



Your local **flat roofing specialist....**



[www.mgreenwoodroofing.co.uk](http://www.mgreenwoodroofing.co.uk)

- Family business, over 40 years experience
- Built-up felt, rubber EPDM and single ply roofing specialist
- Free, no-obligation estimates
- 15-30 year guarantees
- Member of Confederation of Roofing Contractors
- Fascias, soffits and guttering
- Domestic, commercial and industrial flat roofing specialist

## 01525 872224

**M. Greenwood Roofing Ltd.**

40 The Lane, Tebworth  
[enquiries@mgreenwoodroofing.co.uk](mailto:enquiries@mgreenwoodroofing.co.uk)

# Ark House Vets

'we care like you care'

## Caring & professional healthcare for your pets

- Modern Diagnostic Facilities
- Easy Parking
- Food Delivery • Behaviour Clinic
- All Domestic Pets Welcome
- Puppy Playgroup
- Weight Watchers • Training Practice



**T: 01525 373329**

[www.arkhousevets.co.uk](http://www.arkhousevets.co.uk)

22 Hockliffe Street, Leighton Buzzard LU7 1HJ  
(Between Countrywide & Connells)

# Panache



Call or visit to receive your **FREE** hair and beauty consultation from our friendly and experienced team.

- Toni and Guy trained stylists
- L'oreal Advanced Colour Technician
- Wedding hair trained by Patrick Cameron
- Minx nails
- Dermalogica facials
- Fake Bake spray tans

**01525 873031**

**HAIR&BEAUTY**

[panachehairbeauty.co.uk](http://panachehairbeauty.co.uk)

Gift vouchers available  
Senior citizen discount Mon - Weds  
10% Student discount Thurs - Fri

Visit our website for exclusive discounts.

300  
new members in 2009/10!

# Incredible 2011 Golf Membership Deal

**GREAT GOLF AT AFFORDABLE PRICES**

**UNLIMITED GOLF INCLUDING FREE GOLF AT 15 OTHER COURSES\***

**ONLY £440** per annum

OR £44 PER MONTH WITH NO JOINING FEES!

**£50 DEPOSIT**

SECURES YOUR PLACE NOW FOR MEMBERSHIPS COMMENCING  
1ST MARCH, 1ST APRIL AND 1ST MAY.

**SPECIAL OFFER:** Test drive Chalgrave Golf Club in January, February  
or March for £16 midweek (anytime) and £22 at weekends  
(after 11:00am) upon presentation of this advert.

**Tel: 01525 876556**

info@chalgrave.co.uk  
www.chalgravegolf.co.uk



\*SEE WWW.SMARTGOLFER.CO.UK FOR THE FULL LIST OF ALL THE CLUBS AVAILABLE TO PLAY FREE OF CHARGE!!!!

## AJ AUTOS (TODDINGTON) LTD Mechanical Repairs

**\*\* NEW MOT STATION IN TODDINGTON \*\***

**Free local delivery and collection**

**Other services include:**

- Tyres
- Exhaust
- Servicing
- All major repairs



**- Competitive Pricing -**

**Opening Hours: 8.00am - 6.00pm Monday - Friday**

**17-19 High Street, Toddington, Beds. LU5 6BX**

**Tel: 01525 872630**

Advert 8

## HOMESTYLE INTERIORS



**BATHROOMS, KITCHENS, CARPENTRY, PLUMBING,  
PLASTERING, TILING, DECORATING, & GENERAL  
BUILDING WORK**



Please contact us on the following numbers:

**PHIL CLARIDGE:**

**Tel: 01525 633448**

**Mob: 07956 222299**

E-mail: [info@homestyle-interiors.co.uk](mailto:info@homestyle-interiors.co.uk)

Web: [www.homestyle-interiors.co.uk](http://www.homestyle-interiors.co.uk)

**Worry Free Workmanship**

Advert 9





## Joyce's Professional Alterations

Alterations & Repairs Undertaken  
Trousers, Jeans, Skirts, Curtains, etc.

Also: Embroidered Occasion Cards  
made to order

You can find me next to CAPELLO Hair  
Salon at:

26, High Street, Toddington

Monday, Tuesday, Wednesday & Thursday  
10am to 3pm

Please call in.

Tel: 01582 510799  
Mobile: 07989423389



## Toddington Mowers

Professional and Domestic  
Garden Machinery Servicing

Shears Hedge Cutters Strimmers  
Mowers (Petrol and Electric)  
Rotorvators Ride on Mowers  
Any other Garden Equipment

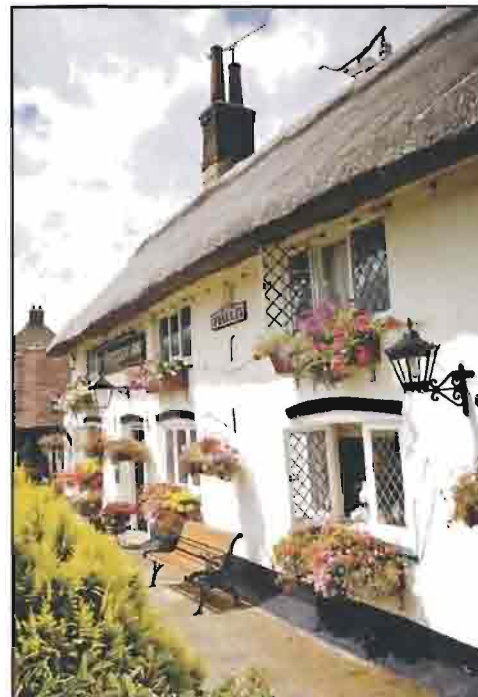


Free local collection and delivery  
Concessions for OAPs

**07949 178971 (mobile)**

Friendly and efficient service

Bob Williamson  
The Old Dairy, Long Lane Farm, Toddington  
Email: bob@toddingtonmowers.co.uk



Theresa and Roger Burden  
Welcome you to

## THE PLOUGH INN Wingfield

16th Century Coaching Inn  
Fullers Brewery

Serving Good Food & Real Ales

Front & Rear Gardens

Large Car Park

Conservatory (also available for hire for  
private parties up to 25 people)

Quiz night every other Sunday evening

Cribbage and dominoes teams

Discount for local residents on Monday and Tuesday  
evenings (on production of voucher)

Telephone: 01525 873077  
Website: [www.theploughinn.com](http://www.theploughinn.com)  
Email: rogerand@theploughinn.com

## STUART DREW ELECTRICAL SERVICES

**\*\*Part P Certified\*\*    \*\*Member of the ECA\*\***

From extra lights & sockets to rewires.  
For a professional, courteous service with  
free estimates and all work guaranteed,  
please call me.

**Fully Qualified & Insured  
Over 30 Years Experience**

29 Lincoln Way  
Harlington  
Beds.  
LU5 6NG

Telephone  
01525 875965  
07941 812662

**CAPELLO  
HAIR DESIGN**

[www.capeellohairdesign.co.uk](http://www.capeellohairdesign.co.uk)

*Come and meet our  
experienced team offering*

Complimentary consultations

Conditioning to suit all hair and scalp conditions

Loyalty system

Reduced rates for Senior Citizens Mon-Thurs

Free parking

Appointments not always necessary



26 High Street, Toddington  
Beds. LU5 6BY

**01525 877599**

GIFT VOUCHERS AVAILABLE  
TIGI L'OREAL REDKEN

# A Denman & Father Family Butchers

High Class Meat  
& Poultry

Home Made Sausage  
Specialist



Market Square  
Toddington  
Beds.

Tel: 01525 872 303

## HOME COMPUTER HELP

Problems with your computer?

Slow running or been hit by a virus?

Do you need someone to untangle your  
computer problems?

Do you need help in working with your  
computer?

Maintenance or repairs?

Or just general computer advice?

- I live in the parish and can help you
- I am a Microsoft Certified Professional
- Free initial consultation
- Friendly efficient service at very reasonable rates

**If you need help please call Scott  
for a no obligation discussion on**

07941 19 00 71 or email  
homecomputerhelp@hotmail.com



Beautiful curtains, hand made in our own studio - lined or interlined with luxurious finishing touches

ASQUITH  
INTERIORS

Est. 1978

36 Market Square, Toddington, Bedfordshire LU5 6BS. Telephone 01525 872077

## THE BATHROOM & TILE ART STUDIO



*Be inspired... visit our showroom at:-*

Unit 1 Hockliffe Business Park, Watling Street,  
Hockliffe, Beds LU7 9NB

Telephone: 01525 211611

Fax: 01525 211024

[www.bathroomandtileart.com](http://www.bathroomandtileart.com)





Toddington Osteopathic Medicine Clinic



*For your optimum quality of life*

**Osteopathy**  
**Cranial Osteopathy**  
**Sports Injury**  
**Sports Massage**  
**Postural & Ergonomic Assessments**  
**Naturopathy**

**Deborah Barnaville & Associates**  
**Registered Osteopaths & Cranial Osteopaths**

**Appointments available:**  
**Mon – Fri 8am-10pm Saturday 9am-6pm**

**Tel: 01525 875474**

**Web: [www.tomclinic.com](http://www.tomclinic.com)**  
**Email: [info@tomclinic.com](mailto:info@tomclinic.com)**

**Proud to be serving Toddington  
and surrounding villages**

**Nisa local**  
[www.nisalocal.com](http://www.nisalocal.com)



Sue White & Gary Bilbrough



**Now Have Branches at:**

Nisa Local: 10 Hillborough Crescent, Houghton Regis, Beds  
 Post Office & News: 8 Hillborough Crescent, Houghton Regis, Beds

Nisa Local: 1 Neptune Square, Houghton Regis, Beds

Nisa Local: 40 Dunstable Road, Toddington, Beds

Nisa Local: 110 Crabtree Lane, Hemel Hempstead, Herts

Nisa Local: Elstree & Borehamwood Station, Herts

Nisa Local: 7-9 The Glebe, Stevenage, Herts

Rupa Tandoori: 87 Mobbsbury Way, Stevenage, Herts



**Great Offers, Great Range, Great Service,  
Free ATM's and more.....**



## ADRIENNE'S PRIVATE HIRE 07980 039 715



**Airport Transfers & Private Hire**  
**All Major Airports, Luxury Air Conditioned Vehicle**  
**Up to 6 People at Very Competitive Rates**

## DIGGERS & DRIVERS For Hire

- Driveways
- Foundations
- Garden Clearance
- Site Clearance
- Access No Problem  
(Diggers from 700mm Wide)
- Dumper & Grab Service
- 7 Days A Week
- All Areas Covered

For Advice, Enquiries and Reliable Service Call Us Now On  
**01525 877234 or 07855 321781**  
Email: [lydonj6@aol.com](mailto:lydonj6@aol.com) [www.diggermanhire.co.uk](http://www.diggermanhire.co.uk)

To advertise in  
this space please  
contact us.

Email:  
[thechalgravenews@live.co.uk](mailto:thechalgravenews@live.co.uk)

Or call  
01525 873963  
01525 877327

## Toddington Fishery



Toddington Fishery is set in a quiet corner of rural Bedfordshire. Originally dug out some 15 years ago and stocked with a variety of coarse fish including roach, perch, tench, bream, with carp to 22lb and catfish to 37lb.



**Toddington Fishery, Herne Farm Cottag**  
**Toddington, Bedfordshire LU5 6HH**  
**Tel: 07855 321 781**

# WILLS AT HOME

## HAVE YOU MADE YOUR WILL?

If not, do it now in the comfort of your own home.

**Call: Terry Westmore - 01525 874653**

**email: [terry@wills-at-home.com](mailto:terry@wills-at-home.com)**

## WE ALSO DEAL WITH:

POWERS OF ATTORNEY

GUARDIANSHIP

LIVING WILLS

PROBATE & ADMINISTRATION

DEEDS OF VARIATION

INHERITANCE TAX PLANNING





Practical Solutions for Growing Businesses  
Providing a Personal Service

FREE Initial consultation for:

**ACCOUNTS \* SELF ASSESSMENT \* AUDIT  
BOOKKEEPING \* CORPORATION TAX \* PENSIONS  
PAYROLL SERVICES \* VAT \* TAX ENQUIRIES**



99 High Street South  
Dunstable  
LU6 3SF  
Tel: (01582) 608601



To advertise in this space  
please contact us.

Email:

[thechalgravenews@live.co.uk](mailto:thechalgravenews@live.co.uk)

Or call

01525 873963

01525 877327

## Chalgrave Memorial Hall

Fees and Charges effective from 1st November 2011

Period	Parish Resident Individual and Parish Voluntary Community Groups	**Non-Parish Resident or Parish Commercial	**Non-Parish Organisation/ Commercial
<b>MONDAY TO THURSDAY</b>			
9am – 6pm	£4 per hour	£8.00 per hour	£9.50 per hour
6pm – 11pm*	£5 per hour	£11.50 per hour	£13.50 per hour
<b>FRIDAY</b>			
9am – 6pm	£4 per hour	£8.00 per hour	£9.50 per hour
6pm – 12 midnight*	£70	£135	£155
<b>SATURDAY</b>			
9am – 6pm	£6 per hour	£11.50 per hour	£13.50 per hour
6pm – 12 midnight*	£70	£160	£210
12.30 pm – 12 midnight*	£105	£215	£275
<b>SUNDAY</b>			
10am – 10pm*	£6 per hour	£11.50 per hour	£13.50 per hour

*\*NB. Hall must be vacated and locked up by this time.*

- Bank Holidays/New Years Eve - Rates on application
- Committee Room available for hire separately when Hall not hired - Rates on application
- \*\*Block/Regular booking discount of up to 15% available
- Bookings outside above hours subject to individual rates on application.
- Non-refundable deposit of 50% of the booking fee payable to confirm booking.
- £100 damage deposit required on all bookings - refundable in full subject to no damage caused to Hall, contents, equipment or grounds and the Hall and grounds being left in a clean and tidy state. NB should the cost of reparation to the Hall contents or equipment exceed the deposit then the Committee reserve the right to pursue the balance.

**FOR BOOKINGS PLEASE TELEPHONE:  
07831 482556**

## Useful Contacts

Chalgrave News Editorial Team	Emma Gray/Su Parker/ Barbara Jackson	thechalgravenews@live.co.uk	01525 877327 01525 873963
Police Beat Officer	PC Martin Pennell	martin.pennell@bedfordshire.pnn.police.uk	07908 519311
Member of Parliament	Andrew Selous	selousa@parliament.uk	01582 662821
Secretary to Andrew Selous	Sue Howats	howats@parliament.uk	01582 662821
Chairman Parish Council	Phil Parry		01525 875169
Vice Chairman Parish Council	Ken Green		01525 874107
Parish Council Clerk	Mrs Lesley Smith	chalgravepc@btinternet.com	01525 874716
Councillor	Daniel Osborn		01525 873920
Councillor	Roger Mence		01525 874516
Councillor	Derek Smith		01525 874105
Councillor	Debbie Hampson		01525 877149
Councillor	Sharon Brown		01525 876148
Councillor	Mark Versallion	mark.versallion@centralbedfordshire.gov.uk	0300 3008555
Central Beds Unitary Council			0300 300 8000
Rector Chalgrave Church	Rev Anne Crawford	www.chalgravechurch.org.uk	01525 872298
Church Secretary	Bev		01525 210161
Chairman Chalgrave Memorial Hall	Roger Masters		01525 873039
Memorial Hall Booking Secretary	Debbie Hampson		07831 482556
Senior Citizens Committee	Roger Masters		01525 873039
West Charity—Clerk to Trustees	Norman Costin		01525 874232
Chalgrave Sports/Cricket Club	Roger Burden		01525 873077
Book Club	Noeleen Thomson		01525 872168
Beavers/Cubs/Scouts	David Yirrell		01525 875410
Rainbows/Brownies/Guides	Gill Hiscox		01525 875239
Toddington Medical Centre		www.toddingtonmedicalcentre.co.uk	01525 872222
Toddington Library			01525 873626
Electricity Board (Emergency)			0800 7838838
Water Board (Emergency)			0845 7145145
Tree Warden	Tony Smith		01525 874716
Head: St Georges Lower School	Mrs Jane Spencer		01525 872360
Head: Parkfields Middle School	Mr Brandon Bravo		01525 872555
Head: Harlington Upper School	Mr Shawn Fell		01525 755100
Toddington Childcare		Playgroup/am & pm school clubs	01525 875400
Helping Hands			07882 988270

## Kilimanjaro Assault

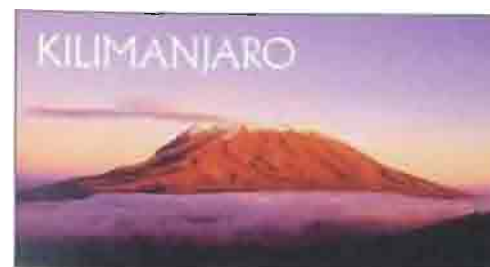
Mount Kilimanjaro is the highest mountain on the continent of Africa and is well-known for this reason. Although you've heard the name you probably couldn't answer the question of what country it's in or how it compares to the other great peaks of the world.

Mount Kilimanjaro is an inactive volcano situated in North West Tanzania near its border with Kenya it is 5,895 meters (19,341 feet) above sea level, Kilimanjaro is the largest freestanding mountain in the world 15100 feet from it's base to it's summit. And for climbers the most common problem for not reaching the summit is altitude based illnesses.

This is the daunting prospect facing Tebworth resident **Mark Greenwood** as next February he sets himself the task of climbing Kilimanjaro for charity, The charity of his choice is **Headway** which is a charitable group based in Luton who look after and give therapy to anyone with brain injuries.

Mark and his wife Vicky moved to The Lane about a year ago and quickly immersed themselves in village life, helping to co-ordinate the street party for the Royal Wedding. Also, Mark is one of the 'new breed' of dart players throwing for glory at The Queens Head each week.

As a relative newcomer to the parish Mark obviously doesn't know many people and therefore he doesn't know who to approach for sponsorship, other than the locals in the Queens Head, so if you would like to help local people, who through no fault of their own, rely on Headway for help with some everyday pursuits that you or I would think nothing of, then please pledge a little or a lot, anything will help.



**You will find sponsorship forms in  
The Queens Head or you  
can phone 01525 875418**

**Do it now!**  
Please don't think about it or  
you won't do it!!  
Thanks



# 101 Non-Emergency Number

Bedfordshire Police have launched a new number providing people with a new way to get in touch about non-emergency issues. **101** is now the main number to call Bedfordshire Police when it is less urgent than 999.

As well as making the police more accessible to communities, it is intended that 101 will reduce the number of inappropriate 999 calls. **There will be a single flat charge of 15p per call**, regardless of the duration, time of day, mobile or landline.

**You should call 101 to report crime and other concerns that do not require an emergency response. For example:**

- Stolen cars
- If you suspect drug dealing/taking
- To give us information about crime in your area
- To speak to your Local Policing Team

**In an emergency, always call 999 when you need an immediate response. For example:**

- Because a crime is in progress
- Someone suspected of a crime is nearby
- When there is danger to life
- When violence is being used or threatened

## **101 will not:**

- Change the way in which we respond to non emergency calls
- Connect people to a large national call centre
- Result in calls receiving a lower priority than if 999 had been called for a nonemergency issue

## **101 should not be used to report:**

- Fly tipping
- Noise pollution
- Stray dogs

These should initially be reported to your local council:

- Central Bedfordshire Council: 0300 300 8000
- Luton Borough Council: 01582 546000
- Bedford Borough Council: 01234 267422

## Christmas Lights Competition

The time has come once again to try and trump your neighbours in the battle of who will have the best Christmas lights. So, untangle your fairy lights and plug in all that twinkles and shines.

We at the News will be out and about as usual over the festive period and the winner will be announced in our edition in the New Year.

Good Luck!

## FOOTPATHS

We have many miles of footpaths crossing the lovely countryside in our Parish. Local farmers do a great deal to maintain these but we do need volunteers to help out with strimming the footpaths, repairing stiles and putting up way markers.

If you use and enjoy our footpaths and could spare a little time occasionally, please call **Ken Green on 01525 874107** for more information.

Maps showing the footpath network are available at The Plough, The Queens Head or [www.chalgrave.org](http://www.chalgrave.org)

## Everybody's entitled to my opinion!

And another thing! As just about everybody I have spoken to agrees with me that we should get out of the EU, preferably tomorrow, why doesn't the Government listen? Where is the referendum? They won't dare do it because they know what the answer will be. Oh, and please, do not tell me that we can't because of the amount of trade we do with them. In case you hadn't noticed Europe (apart from Germany) is skint, the emerging markets of China and India are where the future lies.

I know that I have a very simplistic view on the world but there is no need to complicate things unnecessarily! We put £45 million pounds a day into the EU and spend 12 billion a year; YES £12 Billion that is ring-fenced and due to increase enormously, in foreign aid. How about spending it at home? Should sort out the deficit in fairly short order?

Now how simple is that?!

# Prepare for rising energy prices

The message isn't new, but it has more urgency. The Prime Minister met the Big Six energy suppliers and they agreed to write to 4 million households inviting them to **Check, Switch and Insulate to Save.**

The concern is over rising energy prices. According to the Financial Times, the average dual fuel customer now spends 6% of income on energy bills, compared to 3% in 2004. If the trend persists, the average household faces fuel poverty by 2015.

The trend is upwards, so how do we counter it? Here are some tips.

## 1) Insulate Your Home

Take the frost check. If the frost thaws faster on your roof than your neighbour's, heat is escaping. Top up your loft insulation to 270mm (10.5") to prevent this. Council grants reduce the cost and it could be free if you are aged 70 or over.

## 2) Go Solar

You can now get Feed in Tariff payments for having solar panels on your roof. These are index linked so they will rise with inflation over 25 years.

## 3) Switch Energy Supplier

With 400 tariffs available, a comparison site can help. If you prefer not to switch, review your payment method - direct debit is

cheaper.

Ofgem has said it will simplify standard tariffs so like-for-like comparison will get easier.

For more information, visit [www.cocoonyourhome.co.uk](http://www.cocoonyourhome.co.uk) or phone 0800 8048 777.

Cocoon Your Home compares prices for insulation, solar and energy. The service is impartial, independent and run by United Sustainable Energy Agency, a not-for-profit organisation.

Central Bedfordshire Council is reminding residents of the importance of getting reputable companies to service your heating appliances as you start to prepare for the winter months.

If you are thinking of having your fuel appliances serviced or buying a new wood-burning stove or fire, Trading Standards advise you to seek expert advice and use a specialist HETAS approved retailer/installer. This will ensure that the appliance has been fitted to the correct standard. You will receive a certificate of compliance, which is vital when selling your home, as well as ensuring that the appliance is properly, and safely, installed.

Call 0300 300 8136 for further information.

# Lost Hens & Fowl Play

As I rushed around one Saturday morning, trying to tidy the house and cook for a dinner party, the phone went, the caller had been walking his dog and seen some chickens wandering around the village hall grounds they had been there for some hours and looked distressed.

I phoned a few local chicken owners but no one had lost any, so armed with a cat basket and a few handfuls of corn I set off to the hall having arranged to meet fellow hall committee member and chicken keeper Sharon. On the way I met Frances the Post lady and told her to let any chicken owners she knew that we had some strays.

A very posh looking pure white chicken and her small black and white friend were huddled under the hedge at the back of the hall and there were a lot of feathers about. We approached slowly offering handfuls of corn.

At that point the whole thing deteriorated into a farce reminiscent of The Benny Hill Show, with Sharon & myself, Frances the post lady, who came

to help when she had finished her rounds, and some poor chap who had brought his daughters down to the play area, chasing the chickens around the grounds. We caught one and put her in the cat basket only for her to hurtle out the other side. Tempers frayed and language worsened, eventually after an hour or so we caught them both. I put a notice up outside the hall and brought them home to await a phone call from their owner.

That was a couple of months ago now, Posh & Pecks are still with me and have settled in but I have no idea where they came from.

However it seems I got off lightly as I told this story to a friend who gave me a cutting from The Peterborough Daily Mail. A man agreed to accept some chickens from a breeder who had had an order cancelled, no numbers were mentioned so he was a little surprised when 30 chicks were unloaded from a lorry, which disappeared before any protest could be made.

If you are the owner of the lost chickens and would like them back, please call **Debbie Hampson on 01525 877149.**





## Clubs & Committees



We have only read three books since the last review, *Disgrace* by J M Coetzee and *Circles in a Forest* by

Dalene Matthee, both set in Africa, and *The Guernsey Literary and Potato Peel Pie Society* by Mary Ann Shaffer and Annie Barrows.

*The Guernsey Literary and Potato Peel Pie Society* was an extremely interesting and different read. Set in both London and Guernsey, this novel follows author Juliet as she becomes friends with the inhabitants of the island shortly after World War 2. Told in epistolary style, Juliet learns of the occupied island and its deprivations, as well as the spirit of the people on the island. The title of the book came about as a spur of the moment alibi when its members were discovered breaking the curfew by the Germans occupying their island. A delightful book, very real characters and relationships as well as being funny, warm hearted and genuine. It also provides an interesting insight into the occupation of Guernsey by the Germans during the war. The style of the book (a series of letters between the characters) didn't suit everyone in the group, but most of us thoroughly enjoyed it.

*Disgrace* centres on the main character David Lurie, a 52 year old English professor whose love of romantic poetry (and romancing his students) threaten to turn him into a "moral Dinosaur". Called to account by the University for a passionate but brief affair, David refuses to apologise. He seeks refuge with his Daughter, Lucie, on her isolated small holding, where Lucie is

subjected to a terrifying ordeal by a three men who break into her home.

Not enjoyed by all the Book Club, with very mixed reactions to this book. Very well written from a celebrated author, but we didn't think the characters came across very well and were not likeable at all. One of our more disappointing choices.

*Circles in a Forest* is set in Africa in the 1800's, and deep in the Knysna Forest we read the story of Saul Barnard and his extremely close affinity with the forest and the wild elephants – one elephant in particular "Old Foot". Old Foot has been given a death sentence after a number of elephant rampages through local villages and will be shot when tracked down by woodcutter and ivory thief, Fred Terblans. Saul is determined to find Old Foot first and humanely destroy him before Terblans. While Saul is tracking Old Foot, we are constantly taken back to Saul's early days where he helps his woodcutter father in the forest, until he decides what they are doing is destroying the forest; he rebels and leaves his family to live in the forest alone. Not only are the woodcutters destroying his beloved forest, but gold is found and soon the forest is under a new threat.

Again, not everyone's cup of tea; varying comments from it being a beautiful read to being a bit boring, however the majority of us enjoyed this book and thought the descriptions of the forest very realistic.

Noeleen Thomson



The Annual General Meeting of the Memorial Hall was held on 17th

October last and was attended by the trustees of the Memorial Hall and some parishioners.

2010 – 2011 was a very successful year for the Hall, with bookings up on the previous year. It is very satisfying to see the Hall continuing to be well used.

Last year, following a further bout of unnecessary vandalism, we installed CCTV at the hall and trust it will act to deter further problems. Other improvements to the Hall have been the renewal of curtains and repainting of our play equipment.

Once again we have increased the hire fees to those outside the Parish booking the Hall which has, for the sixth year running enabled us to hold the cost to parishioners. Chalgrave Memorial Hall continues to be one of the most economical halls for hire in the county. New fees and charges for hall hire effective from 1st November are printed in this magazine.

Finally, I would like to take this opportunity of thanking all members of the committee for the work they have put in over the last year and look forward to another successful year in 2012.

*Roger Masters*

## Chalgrave Sports Club



The cricket season has been completed with The Plough Inn winning both the league and the 10/10 competition.

Work is continuing on the clubhouse and we are looking to make it safe and sound before too long.

Also, work to the cricket field continues so there is much to do in readiness for next years competition.

Thanks must go to the committee who made this past seasons events possible.

We are hoping to have a race night next February where everyone will be invited to attend a really good night out.

We will keep you posted.

*Roger Burden*

## Queens Head Update

Hello to you all, it is Colin here wishing you all good health and happiness on the run up to Christmas, - yes Christmas it has come round so quickly hasn't it? It seems barely a year ago we were celebrating last Christmas, still it is a lovely time of year when everyone is happy, - well nearly everyone, there are always people who don't realise that we as the great British public have a lot to be happy about in comparison to some of the people of the world.

So, what has happened in the exciting life of the Queens Head since I last wrote in this wonderful Parish magazine of ours?



Well, do you remember the 1<sup>st</sup> October?

It was a Saturday and some of the pub regulars who wish to remain



anonymous organised a BBQ, come rain or shine in aid of the firework fund, no one expected it to be the huge success that it turned out to be. It was a great day mainly because it was advertised so that people knew about it, and secondly, because of the fabulous weather; amazingly a warm sun shone all day.

Morgan (a great all round entertainer) played the guitar and sang his heart out as well as entertaining the kids, the BBQ team were run ragged by you



lovely people all wanting the now quite famous blacksmiths rib rack along with burgers etc and those behind the bar more than earned the paltry sum I paid them, so thank you all for being there and making the day such a triumph.

Moving on to more regular stuff, the domino team are still winning more matches than they are losing, but they still meet up on a Saturday night to hone their skills and meet new friends (why not come along) and the dart team who now play on a **Wednesday** evening as it is the winter league are doing very nicely thank you.

People are showing a lot of interest in one of our regular customers who is doing a sponsored mountain climb. Mark Greenwood is not going to climb any old mountain oh no - he has chosen to climb Mount Kilimanjaro in Africa, I don't know where he gets the energy I would be exhausted just thinking about it, but good luck to him, you can find the sponsor form behind the bar if you wish to support him.

We had a very well supported Bonfire night a couple of weeks ago and all the hard work done by those anonymous customers during the year went up in smoke in a most spectacular fashion, I would like to thank Steve the local pyromaniac for volunteering his expertise on the night - great job!

Monday night music has become a bit spasmodic as Ade has had his car nicked! So he comes whenever he can get a lift, but Friday nights are still packing them in so why not join us for a sing-along one Friday night now that the nights are getting colder and darker. I look forward to seeing you.

Cheers Colin



## The Plough

Christmas is nearly upon us and our Christmas menu is now available and will run between **1<sup>st</sup> December and up to and including 24<sup>th</sup> December.**

**The menus are available at The Plough or on our website The Plough Inn Wingfield.**

**On New Years Eve we will be having our annual disco event. A buffet will be provided and something bubbly** will be provided at Midnight. Entry will be free and the disco will start at **7.30pm** till late. Everybody will be welcome.

Our gourmet nights have been a great success and we were hoping to have two more in November but due to holidays and the advent of Christmas we have postponed this until **February**. The exact dates will be announced in the next few weeks and it will be posted outside the pub.

Our quiz night is held every other Sunday with the next quiz on **27<sup>th</sup> November** and every 14 days thereafter. All are welcome.

The crib season has finished with both teams outside the top three, although the B team finished **4<sup>th</sup>**. The A team will have to do better. The

new season will start at the end of March 2012 and any new players will be welcome.

The domino season has started and we are **2<sup>nd</sup>** in the league at the moment and have reached the quarter finals of the cup competition.

The cricket team won the league and the 10/10 competition. The new season will get underway in April 2012 and any new players would be extremely welcome.

The PIGS golf society goes from strength to strength and our next society day is **December 30<sup>th</sup>** at a venue to be announced shortly.

The Whist and Tipple card school on Thursday nights go from strength to strength and is an enjoyable evening. Anyone wishing to play are more than welcome.

Anyone wishing to find out what is happening at The Plough can visit our website at The Plough Inn Wingfield.





# West Charity

As many of you know, **West's Educational Charity** is a local charity which gives grants to young people under the age of 25 residing in the parishes of Hockliffe or Chalgrave. The grants **must** be for an educational purpose.

Far too many people seem to be saying that the charity is highly secretive and that they never understand how we calculate grants and why some applications are refused. So here is our attempt to de-mystify the workings of the charity.

There are six Trustees: three from Hockliffe (Alan Shadbolt, Paul Dickens and Nicola Benger), three from Chalgrave (Lyndie Lothian, Phil Parry and Daniel Osborn) and Tom Nicols, appointed as the Local Authority (Central Bedfordshire) representative.

There are usually 3 meetings a year: the ones in January and July are for allocating grants and there is usually one other to discuss financial matters. The value of the charity's assets varies considerably from year to year in line with fluctuations in the financial markets, but a ballpark figure would be in the region of £500,000 to £600,000. Annual income is around the £20,000 - £25,000 mark.

The number of applications for grants has risen considerably over the past 10 years and we have reached the position where there is insufficient income to preserve the capital base for future generations and to pay out all applications in full. We therefore have to adopt guidelines in an attempt to be as fair as possible to everyone. These rules have to be flexible and sometimes they need to be tweaked, particularly in times such as the present, when interest rates are so low and our income has fallen.

We recently held a meeting to discuss how we could better distribute the charity's income. We decided to radically overhaul our guidelines. One major change is the abolition of uniform grants. This was very much a relic from the old days when parents from poor families needed help to buy uniforms to send their children to grammar schools. At the same time, we realise that the financial pressures on those in higher education have increased considerably and we have therefore increased our student grant to £250 per half year, a full £500 per year. So here is a list of the changes and new guidelines, but please, please remember that they are not cast in stone and if you or your child receives a cheque for less, it is probably because we had to reduce everyone's grant to fit the income available at that particular time.

## Main changes

- the abolition of the £40 uniform grant
- the abolition of the £100 grant to 16 – 18 year olds
- the abolition of grants for routine travel expenses
- all applications on behalf of young people under the age of 18 are now made by parents/carers

## New guidelines (with effect from 2011)

- Applicants must reside in the parishes of Hockliffe or Chalgrave and be under the age of 25
- All applications on behalf of children/young people under the age of 18 at the time of the application **MUST BE MADE** by a parent/carer on behalf of that child/young person.
- All applications on behalf of young people aged 18 to 24 at the time of the application **MUST BE MADE** by that young person him/herself.

### We would usually expect to pay:-

- a student grant of £250 per half year for those in full time higher education (those still at school do not qualify)
  - a contribution towards costs incurred by anyone receiving some form of formal education out of school (e.g. part-time college, apprenticeships etc)
  - 50% of the cost of lessons in the performing arts (music, dance, drama etc)
  - 40% of the cost of sporting activities (football, rugby, cricket, netball, riding etc)
  - 75% of the cost of swimming lessons (except for children attending Hockliffe Lower School, who get them free of charge through the school, financed by West's Charity)
- We will continue to make contributions to school trips of an educational nature. (This does not include trips which are wholly for leisure, such as Alton Towers, Legoland etc.)
  - We will only pay routine travel expenses in exceptional circumstances
  - There will be a maximum grant of £200 per child/young person per application, except for:
    - a. those receiving the £250 student grant
    - b. out-of-the-ordinary, one-off events
    - c. exceptional circumstances.

***It is very important that you remember that these are only examples. ANYONE under 25 residing in Hockliffe or Chalgrave is encouraged to apply for a grant towards ANY educational activity. NOTHING WHATSOEVER is ruled out, so long as the activity is educational.***

**The final application deadline for 2011 is 31st December.** Receipts are required to support all applications, except the £250 student grant. No receipt usually means no grant. Late applications will be considered at the next meeting.

Go to [www.chalgrave.org](http://www.chalgrave.org) to see this and more information and to download an application form. If you do not have access to the internet and require an application form, please contact **Norman Costin, Clerk to the Trustees on 01525 87423.**

## 80mph? Careful, you might get what you wished for

Now there has been a great deal of fuss lately about a proposed 80mph speed limit on motorways. This has blown up again after the horrendous crash on the M5. 'Brake', who are some sort of self declared band of lunatics that want to save us from ourselves and get us to walk everywhere, have already declared that '...it would have been much worse if we had an 80 limit', without even knowing what the cause of the accident was! Now, I feel desperately sorry for the people involved in that tragic accident, but at least get the facts before you start preaching anti-speed drivel to us.

In case you hadn't noticed, or have been living in a cave for the past 20 years, 85mph is already the 'normal' speed you can expect to be doing in flowing motorway traffic. Any slower and you will have the indentation of an Audi or BMW impregnated in your boot lid. And rightly so. 85mph is fine on a motorway, BUT, and it's a big but, only when it is safe to do so. In France the limit is 130kph but reduces to 110 in the rain. Not a bad idea, although I can see the legal fraternity rubbing their hands with the prospect of arguing that their clients' accident happened in the dry rather a 'light drizzle'.

The point is, as with all things announced by the Government, it's what they haven't said that is far more important than what they have. If 80 is introduced, and it could be in 2013, how will it be policed? At the moment you probably will not get a ticket if you are

doing under 85, possibly 90, allowing for speedo error. They will tell you that they want to bring people 'within the law', which I think means they will police 80mph considerably more vigorously than they do now, which means your average journey time will increase. Just think, if the Police upheld the current 70 mph limit, there would be a long queue of cars on the hard shoulder waiting to be issued tickets and we will all soon have enough points to get a free toaster! Fortunately, they do not. This is because they know 85mph, 'in the right conditions' is fine and there are very few Traffic Police left as we have given all our money away! They could of course put average speed cameras across the motorway network and then we really would be snookered, we would all just be waiting for the envelope through the door with our fine in it. I don't think that it will go this far however, mainly because everybody would hate the Government even more than they do now and motorists wouldn't vote for them next time. As a 'first term' Governments' only ambition is a second term, it's unlikely.

No. I think we are probably better off as we are, leave it alone and let us all break the law together. That way we will get less enforcement and Brake will have to think of something else to protect us from. What's left of the Traffic Police can concentrate on the nutters that inhabit our network driving like they've just (and probably have) nicked it, and we can get to where we want to go without a conversation with Mr Plod!

## Local Artist's Portraits and Little Landscapes

If you are out and about on one of these (probably not so) sunny days you may find Tebworth artist Amanda Coleman surrounded by brushes and tubes of paint working on one of her little paintings of the local landscape.

Amanda started to exhibit her work approximately two years ago. Working with landscapes, objects and portraits, she has already had paintings selected for the Royal Academy of Arts Summer Exhibition, Royal Birmingham Society of Artists portrait exhibition and, most recently, the Cork Street Open Exhibition in Mayfair.

Amanda regularly has paintings on display at the Bedford Street Gallery, Woburn and at the Swann Gallery, Woodstock, Oxfordshire, where paintings are for sale.

She is also currently taking commissions for portrait paintings and can work from sittings or photographs. If you would like further information please contact Amanda at [amandadotcoleman@aol.com](mailto:amandadotcoleman@aol.com) or by telephone on 01525 877 623.



Wheatfield in Sun II oil on canvas



Tebworth Fields Tebworth Sheep



Jessica Alice  
oil on canvas  
© Amanda Coleman





# Zumba!

Everyone's heard of the craze.  
But did you know it takes place every  
week in your village?



It was created by accident when Alberto Perez, an aerobics teacher, forgot his usual dance music and improvised with his own collection of salsa and merengue that he grew up with. The class loved it and the Zumba fitness party was born. In their words: 'At Zumba Fitness, our vision is to fill the world's empty rooms with Zumba classes. Working hand-in-hand with our most dedicated Zumba Instructors, together, our goal is to spread the philosophy of health and happiness and of loving everything you do, especially your workout.'

Sound good?

Well, give it a try at your local village hall! It's a Latin-inspired, easy-to-follow, dance-fitness party that exhilarates the senses and works all the major muscle groups in a high-energy cardio blast that leaves you invigorated, refreshed and full of life – all this whilst burning calories! What's more, you're meeting new people that you may have never met in the village before, building strong friendships and having a laugh – we can talk from personal experience.

Even if you have no rhythm or two left feet, it's worth giving Zumba a try- it's for all ages. None of us are as good as our excellent teacher Mona, and even if a song proves a little tricky, we just have a go! At 7 o'clock on Thursday evenings, feel the pleasure and peace of mind of being able to walk to an activity in the village rather than using the car. Feel the sense of community and belonging knowing you're supporting a group in Chalgrave.

Thursdays 7 o'clock

Time to Party



## Social Events & Fundraisers

As you know, throughout the year various Chalgrave organisations host fundraising and social events, such as the Quiz Night and Variety Show.

To ensure that all members of our community are catered for, we would welcome any suggestions or ideas that you may have for events you would like to see happening, or would even like to host or organise yourself!

Kids, this question goes to you too. We won't be organising a Christmas film this year due to poor attendance at previous showings. So, is there ANYTHING that you would like to see happening that would tempt you away from the PS3, Xbox or TV?

Please let us know by emailing:  
[thechalgravenews@live.co.uk](mailto:thechalgravenews@live.co.uk)  
or by calling one of the editorial team:

Emma: 877327 / Su: 873963 /  
Debbie: 877149



## Everybody's entitled to my opinion!

I thought there was some sort of "recession" on? NOT around here, it would appear. Thought we might go out with the neighbours (they can't keep turning us down!!) Rang up The Birch...fully booked, French Horn....fully booked, Black Horse....could fit us in.. if we were lucky, & several other places...no chance. Now I know it was for a Saturday evening, but you get my drift?

And another thing on the same note but different money. Fancy a new Porsche Cayenne (that's the big 4x4), £55 to 100 grand or so new, order it now and you might get it late spring 2012, that's 6 months!! Perhaps you might consider buying a second hand one instead?? There are only 9 new shape Cayenne Diesels available in Porsche dealers plus a handful of Demo's at the time of writing.

Just goes to show, there are plenty of people who have always had money, and will always have money and are happy to spend it on big dinners and big cars! Me? I'm booking The Birch for next May, might get a table by then and will have saved up enough to pay the bill! And I'm going by Taxi!!

Father Christmas is  
coming to Chalgrave

Look out for him  
on 17th December



Adult volunteers are much appreciated to collect donations.  
If you are able to help, please contact Roger Masters on  
01525 873039

Money raised supports Flitwick Round Table and the Senior  
Citizens in our Parish. Thank you for your help.

**Deadline for next edition: 16th January**

Please submit entries by email to: [thechalgravenews@live.co.uk](mailto:thechalgravenews@live.co.uk)

Or by phone to:

Emma: 877327/ Su: 873963 / Debbie: 877149

*Note: Where possible please submit written articles as a  
**Microsoft Word** document, ready for publication.*

### Everybody's entitled to my opinion!

Last Tuesday, I remember it well. It was the only day for as long as I can recall, when there wasn't an accident on the M1 around Junctions 10-13! It really is ridiculous and nobody apart from the poor commuters seems to be particularly bothered.

The most stupid thing is, it could easily be fixed. The reason that people keep hitting each other is that the 50 mph limit is too low, allowing traffic to bunch up, and then the average speed cameras ensure people are watching their speedos rather than the road ahead. Get the limit back to at least 60 and more likely 70 and get rid of the stupid 'tax gatherers on a pole', then perhaps the number of accidents will reduce considerably. Better still, finish the b\*\*\*\* roadworks, it took less time to build the M1 in the 50's than it has to widen a few miles of it!

### Grumpy Old.....



When we got rid of the last government, I thought, probably like most other people, thank goodness for that! Sadly, this lot seem more able to run a bath than a country! The latest farce is the Border Agency who seem to have stopped checking passports of UK citizens but had forgotten to get permission from Whitehall, or the Government are covering something else up and they knew all about it all along? I am sure that we don't want just anybody to stroll into the UK and go directly to the benefits office, but neither do we want to stand about all night long when we come back from our holidays waiting for the civil servant behind the desk to allow bona-fide people in!