

CHALGRAVE NEWS

The free community magazine delivered to homes and businesses in the Chalgrave Parish



Publication No.35 June 2012

Dates for Your Diary

| Day/Date | Event | Location/Contact | Time |
|---------------------------|-----------------------------------|------------------|--------|
| 3rd Tuesday of each month | Parish Council Meeting | Memorial Hall | 7.30pm |
| Every other Sunday | Quiz Night | Plough Inn | 9.00pm |
| Mondays | Dominoes | Plough Inn | |
| Mondays & Fridays | Live entertainment | Queens Head | 7.30pm |
| Wednesdays | Darts | Queens Head | |
| Thursdays | Dominoes | Queens Head | |
| Weekdays | Book Club | Noeleen Thompson | |
| Thursdays | Zumba Fitness | Memorial Hall | 7.00pm |
| 2nd Tuesday of each month | W.I. | Memorial Hall | 8-10pm |
| Saturday 30th June | West Charity Application Deadline | Norman Costin | |
| Saturday 14th July | Village Games | Memorial Hall | 1.00pm |
| 7th & 8th December | Old Time Music Hall | Memorial Hall | TBC |

Front Cover: Diamond Jubilee Street Party, The Lane, Tebworth

Deadline for next edition: 10th September

Please submit entries by email to:

thechalgravenews@live.co.uk

Or by phone to: Emma: 877327/ Su: 873963 / Debbie: 877149

The Chalgrave News team produce The Chalgrave News in good faith and do all we can to ensure that no offence is caused to any individual or organisation.

We also reserve the right not to publish articles and contributions submitted to us if they do not comply with our policy.

Editorial

Spring sprung, sprung a leak more like! Summer arrived, but forgot the sun! After teasing us on early on with a couple of sunny days, Mother Nature gave us a good soaking throughout April & May and continues to do so during June. We thought we'd left the bad weather behind us after the only weekend where we had snow, here's Millie and Barbara braving the cold to deliver the last edition of the News.



But, we won't let that dampen our spirits. We have plenty going on in this edition, perfect for sitting down with a cuppa and ignoring what's going on outside for half an hour.

We have lots of photos in this bumper edition, starting with the competitive folk taxing their brains at the **Quiz Night** (pgs 12-13).



Ben Gray (*and some strange lady with a cloak & flag!*) and Millie Parker were two of the children of the Parish who took part in the Toddington Jubilee Parade on Saturday 2nd June, which had a great turnout from various organisations/groups and Schools.



Here in Chalgrave we of course had our own **Street Party** on Monday 4th and there are pictures aplenty on pages 14-19.

Finally, the **Beer Festival** at The Plough also took place over the Jubilee weekend, some very merry pictures can be found on pages 24-25.



NOTICE: We've been made aware of a few incidents of dogs not being properly secured and running out of their properties and causing distress to some residents, as well as causing a potential hazard on the roads. Please remember to keep gates closed so dogs and people stay safe!

Chairman of the Parish Council

2012 Chairman's Report

The Parish Council consists of myself as the Chairman and also I am one of the Council representatives of the West Trust; Ken Green who is the Vice Chairman and heads up the Footpaths Committee and has responsibility for the Website; Daniel Osborn who is on the Planning Committee and is our Police Liaison as well as the second Council representative on the West Trust; Debbie Hampson also on the Planning Committee. Derek Smith heavily involved in Traffic Calming; Roger Mence who is able to attend many external meetings on our behalf; and our newly co-opted member Sharon Brown who sorts out any fly-tipping in our area. And not forgetting the most important member of the Parish Council, and this is Lesley Smith, who is our Parish Clerk.

As always the past year has been a very active one for the Parish Council. In case you are not aware we do a lot of work behind the scenes. We work on a voluntary basis trying to do as much as we can for our local community. As well as our monthly meetings and individual responsibilities we attend local and area meetings where decisions can be made that affect our Parish, we lobby MP's and local councillors, we defend the rural nature of our community, we encourage and support local activities, we look for ways of improving facilities and the infrastructure, we strive to keep our community spirit and, as your representatives, we listen to you.

Between a quarter and a third of our precept we receive from you goes straight back into our community in the form of grants and awards. Part of the precept is for the running costs of the Council which includes the Clerks salary and we have to put some monies aside in our reserve fund for unexpected costs – best practice is to have the equivalent of a year's precept in the reserve fund. At the moment because of the rather large amount we paid out for the repairs to Parkview Lane we are somewhat off that target.

As you may know we put the precept up by 3% this financial year. Out of 78 Town and Parish Councils in Central Beds we are 18th lowest for a Band D property – the increase is less than a £1 per household. This will give us a precept of £6816.

The accounts can be viewed via the Clerk, as can all Parish Council documentation – minutes of meetings, correspondence, etc. - if you are a resident of the Parish.

Planning is one of our many concerns, both at a Parish and County level. Within our Parish, we will see all planning applications and we can make comments and objections for Central Beds to consider. We are also keen to make sure residents abide by the planning rules.

At a County and National level we are very vocal in our determination to protect the Green Belt. We are deeply concerned with the new 'presumption of yes' – in other words developers can put in a planning application and it will be approved unless there is a valid and strong case against the development. In the past the presumption had been 'no', the developers had to make a strong case for the proposed development.

We look to our Central Beds Councillor and our MP to represent and support our views at local and National level.

As you know the M1/A5 Link Road will go ahead, which means that the Green Belt north of Houghton Regis and up to the new Link Road will be used for housing development. Ken and I went to meet Houghton Regis Town Council to find out what plans they had and were somewhat surprised and dismayed that they did not have a plan. We suggested that they might like to consider a plan to have more control over development and infrastructure. We also offered our input.

However, on the bright side of the Link Road it may mean that we can have a heavy lorry ban and a twenty mile an hour speed limit through Tebworth.

Speeding vehicles and articulated lorries coming through our Parish are always a problem. Derek has been doing speed checks and, in conjunction with the Police, has been using our mobile Speed Monitor.

The heavy rainfall has highlighted the drain problems in the Parish. We are in contact with Central Beds to try and fix these problems.

A lot happens in our Parish and we should be proud of our community spirit. As well as the usual activities there was the Rogation Walk on the 13th May and the Jubilee Street Party that took place on the 4th June. The annual Village Games will be on the 14th July and this year there will be an Old Time Music Hall at the beginning of December.

Finally, the **Millennium Youth and the Community Awards for 2011**. Can we have your **nominations by June 30th**. Both awards are to recognise a significant achievement or community service. The Millennium Youth Award is for 18 years and under and is a 'well done' for academic or sporting achievement, contribution to the community, overcoming difficulties, or other significant achievement. The Community Award is for over 18's and is a 'thank you' for service to the community. If you have a nomination please contact the Clerk, Lesley Smith, or any of the councillors.

You are invited to any of our meetings. They are usually on the third Tuesday of the month in the Memorial Hall at 7:30.

Phil Parry, Chairman



View from the House: Andrew Selous MP

Andrew Selous is MP for South West Bedfordshire
and can be contacted on 01582 662 821 or
andrew.selous.mp@parliament.uk



“Burger, chips and a battery recharge please !”

The Government has asked for electric vehicle recharging points to be installed in Leighton Buzzard and Dunstable before the end of this month as part of its programme to establish many thousands of electric vehicle charging bays in “lead places” across the UK. Locally we have always known that Dunstable and Leighton Buzzard were “lead places”, but it is good to have official recognition of this.

Rarely can a Government initiative deal with so many pressing needs at once. Motorists are desperate to pay less at the pumps, the unemployed need a major new industry to take off, employing hundreds of thousands of people, and we need to reduce our carbon emissions to prevent climate change damaging our planet. These are all reasons why I am such a passionate advocate of the UK championing this new technology to take a world leading position in a massive new global market. The UK automotive market adds around £6.5 billion every year to the UK economy. It's not true we don't make things anymore, we just don't manufacture enough. This new technology, with Nissan making batteries and the all electric Nissan Leaf in the UK is great news for the creation of high-tech, low carbon jobs.

The Government is investing £400 million in electric and low carbon vehicles. Cars account for over half of the UK's domestic transport emissions, so investment in low carbon cars is a must. An extensive public recharging network is being created. For example, Chargemaster will provide 4,000 electric vehicle charging bays by the end of 2012. Little Chef plan to have charging points across the whole of the UK, so that 90% of the UK will be within 30 miles of a Little Chef charging point. Welcome Break and Ecotricity (from whom I buy my own gas and electricity) are installing recharging points at motorway service stations, with the first already installed at South Mimms services. An 80% recharge is possible within 30 minutes, not much longer than we often spend at service stations.

Ten cars are also eligible for a £5,000 grant towards their cost including the Vauxhall Ampera, the Nissan Leaf, the Peugeot iOn, the Toyota Prius plug-in hybrid, the Renault Fluence ZE and the Chevrolet Volt. I have test driven the Vauxhall Ampera and it drives extremely well. You push a button to start it ! There is now also a new £8,000 plug-in van grant and eligible vans will be announced shortly. I do hope the Vauxhall IBC van plant in Luton will be offering an electric van soon. I have asked them to consider this urgently.

It is important that drivers realize the tax incentives available for these cars and vans. There is no vehicle excise duty (road tax) or London congestion charge to pay. There is also no fuel benefit charge, no company car tax or van benefit charge as well as 100% first year allowances for business expenditure on electric cars or vans.

Welcome from All Saints Church



All Sunday Services at 9.30am are Sung Holy Communion.

On the first Sunday in each month we have a shorter service, sometimes accompanied by a band, and as the service is child friendly as we do not have a Sunday School.

Dear friends

Over the coming weeks we will be celebrating momentous events in the life of our country. Queen Elizabeth's Diamond Jubilee will be etched on all our memories as a time of thanksgiving and celebration for a life lived generously and faithfully in the service of others; and the Olympics will mark a milestone for many athletes as they reap the benefits of years of perseverance and serious training and realise the full potential of their God-given talents.

The Christian Church is also in a mood of celebration. We have just celebrated the feast of Pentecost - the Church's birthday - when we remember the coming power of the Holy Spirit on those first disciples, a power which released in them the gift of faith and enabled them to do the most extra-ordinary things for God and for His world. In the Bible our Christian journey is compared to running a race, and as we head for the finishing line, we are reminded to train hard, to keep our eyes fixed on Jesus, and listen out for the encouragement of those cheering us on from the sidelines. The Queen, like any gifted athlete, has run a magnificent race throughout her life, and it is evident that Christ has been with her all along the route as she has sought to learn from Him and serve His people. She has, as the famous hymn puts it, faced many dangers, toils and snares, but her faith has sustained her and kept her strong in conviction, and courageous in the face of opposition and criticism.

I love the symbolic language the Christian Church uses to shed light on the deep mysteries of faith, and one particular symbol, oil, has rich significance for the Queen and for us as we train to be athletes in the holy race we call life. At her coronation the Queen was anointed with perfumed oil at the most sacred part of the ceremony: a symbol of the Holy Spirit pouring out upon her the riches of God's grace, a grace which would enable her, as it enabled those first disciples, to live life for others and for God in the best way possible.

As Christians we too are anointed with oil at our baptism: in the Anglican Church the priest 'anoints' the candidates with oil as a sign and seal of their new spiritual birth. Like the oil used at baptism, the oil used at the coronation was pressed from olives grown on the hillsides around Jerusalem, and for the Queen it was perfumed with orange, rose, cinnamon, musk and ambergris, a symbol of a life of service sweetened with the love and protection of God.

The tradition of anointing comes from the Old Testament where oil had a significant role. Oil penetrates deeply into the body giving strength, health, suppleness and beauty, all the qualities needed to run a good race. To be anointed with oil was a sign of rejoicing and respect and it took place as part of the rites of consecration. The significance of the anointing was that the anointed one had been chosen by God to be His sign to the people. A king so anointed became a sharer in the Spirit of God. Christ means 'anointed one' and Jesus was given special work to do in redeeming mankind and bringing us back to God. In Queen Elizabeth II we see a shining example of a human being set apart to share in His work, reflecting His love to the people of this country and the commonwealth.

May God bless the Queen in this her Diamond Jubilee year, and may He pour upon her the riches of His Grace as we celebrate a race well run.

Happy celebrating!

Anne

'Just Looking' – open evenings exploring Christianity

Would you like to know more about the Christian faith but are unsure about how to ask, or where to begin?

Why not come along to one of our open evenings and explore in a relaxed environment with cake and coffee.

**8pm Wednesday 1st August at All Saints, Chalgrave
and
8pm Wed 5th September at St George's, Toddington.**

Church Calendar

| | |
|----------------------------------|---|
| Saturday 9 th June | Cake stall, Toddington Green 10.00am |
| Saturday 16 th June | Salmon and Strawberries at the Rectory |
| Saturday 14 th July | Chalgrave Games, “in the stocks and everything strawberry” |
| Saturday 25 th August | Harp Concert |



Summer Weddings

Congratulations to all our couples being married this summer at Chalgrave:

| | |
|-----------------------|--------------------------------|
| 9 th June | James Lewis and Lara Holt |
| 23 rd June | Craig Roy and Rebecca Nolan |
| 30 th June | Pat Ryan and Shaun Lawrence |
| 7 th July | Katie Playle and Chris Clark |
| 27 th July | Rebecca Bailey and Luke Lucas |
| 3 rd Aug | Amy Kennedy and Peter Fox |
| 11 th Aug | Mark Abraham and Evie Pross |
| 13 th Aug | Linda Douthwaite and Ben Lowry |



Baptism

| | |
|----------------------|---------------------|
| 1 st July | Thomas Peel |
| 1 st July | Indy Young- Edwards |

Messy Church

Crafts, games, worship and food. Everyone welcome!
6th July – Messy Sports



Flower Festival

Firstly let me thank all of you who attended the Dunstable Ladies Choir Night, the choir performed for free, the half time buffet was provided by the fund raising committee and so the proceeds of approx £260 was made available to the flower arrangers to produce the designs for the **Flower Festival**.

The theme was the **Queens Diamond Jubilee**, the arrangements were imaginative, beautiful and produced the most wonderful smell in the church.

In all of my write ups, I thank the people who have attended the events, this time however I would like to thank the people who gave so generously to sponsor us as well, local people, local Companies, some of the arrangers themselves who donated the flowers.

Now I would like to thank everyone who came, walked around, ate the cream tea's or who just had a cup of tea, without you we could not have had such a successful three days.



We made a staggering amount of **£1,085.00**, which will be put to good use. We have at the present time four projects: the window vents for more circulation, the choir pew floor (damaged by dry rot), new gates (the others are rotten) and the north aisle and the paintings (the felt on the roof needs work), as for the paintings we must in the future stabilise the drawing and colour before they fade.

The work on the gates, window vents and choir stall floor, amounts to approx £7469 some of which has VAT to be added, the roof has yet to be quoted on. We all know that Chalgrave Church is a master piece; anyone who came to the festival would have heard Kevin McCloud of Grand Design fame calling it magical, as he knew it well as a boy. So **please** come to the events, your pennies add up to keeping the magic alive.

What's happening over the next few months?

Saturday 16th June - Salmon and Strawberries at the Rectory 12.30pm tickets £7.50

A Diamond Jubilee Celebration, bunting and table clothes, a traditional afternoon of salmon, strawberries, cakes and tea, plus members from the Todddington band will be playing and you can sit in the garden and chat over food.

Saturday 25th August Harp Concert 7.30pm All Saints Church, Chalgrave Harpist is Robin Ward; the cost will be £10.00 for adults and £8.00 for concession, which will include light refreshment at the interval.

Robin originates from New Zealand, he performs in New Zealand, Australia and the UK, he also builds his own instruments, his website is www.earlyharps.com should you wish to listen to a preview.

Volunteers

I hear you groan what now!!

We need volunteers to help keep the grass cut; we have a large mower and small mowers for between the graves, we have 8 weddings this year and the area has to look a picture. The weather as we all know has been wet and so we are behind, if you can give us a few hours just to catch up that would be great. **Contact me – Bev on 01525 210161**

PCC meetings

Should you want to raise any points with the PCC then please let me know on 01525 210161 or diarcw@aol.com and I will add to the agenda. Meetings are held on the last Thursday in May, July, September and November.

Chalgrave News Quiz Evening



On 24th March the Chalgrave News held their fourth annual quiz evening in the Memorial Hall, with more than 80 people attending. This event is becoming increasingly popular for all ages from babies to pensioners and this year there were more children than ever taking part.

Included in the price of the ticket was a delicious meal of fish and chips or sausage and chips, supplied by Pepe's in Dunstable, which was served halfway through the evening. There was also a well-stocked bar which proved very popular.



John Parker was, once again, an excellent quizmaster; keeping firm control of things despite some heckling and argumentativeness from the various teams. He was ably assisted by Paul Levy as scorer, who, in his 2nd year in this role, involved several of the children as his enthusiastic assistants.

Spot prizes were awarded between rounds, some aimed solely at the children, whilst others – I'm sure much harder this year – for the adults.



In previous years the Alzheimer's Society team have won the quiz.

However, this year The Outsiders took home the prize of £100, narrowly beating the team from All Saints Church who are in training to win next year. Many congratulations to them all.



All in all, this was a very enjoyable evening and many congratulations and thanks to all those who worked so hard to organise and run this event.







Luck was on our side for the Jubilee street party as there were blue skies and the sun shone. A light breeze and a few showers made the odd appearance, but not enough to dampen spirits.

There was food aplenty and games and activities to keep the children entertained, as well as Joe and Frankie who provided the music. Many thanks to all those who worked so hard to organise the event and ensured a good time was had by all.













Jubilee Coins

The Parish Council has arranged for all young people (16 and under) to receive a commemorative Jubilee Coin as a memento of the occasion.

These were given out at the Street Party on the 4th June. If you were not able to attend the Street Party and would like a Jubilee Coin, please contact the Parish Clerk, Lesley Smith, or any member of the Parish Council.

Contact details can be found on the last page of the advertising section of this magazine.

Phil Parry, Chairman



All Our Yesterdays - No 8

Before 1929 the Chalgrave parish boundary ran down the centre of Watling Street



● A bullock-cart on Watling Street, Hockliffe, in 1904. Now the busy A5, the road then was unsurfaced.

I think this is taken from Birches Close, near the P.O. *Note:* a "close" was originally a piece of land defined in the enclosures acts, so this piece of land was owned by the Birches family.



I think this is from the same spot looking North. The pub on the right is I think the Red Lion previously The Three Blackbirds. The road there is now called Blackbirds. Looks a bit later than 1904?

Contact: Ken Green on 01525 874107 or kenandlyn@tinyworld.co.uk if you have any comment or information.

"Beating the Bounds" on the Rogation Sunday 2012



We had a most successful day, sunshine all the way with more walkers than any previous year.

We cut down to the A5 to Birches Close and walked the whole historic boundary cutting back up to Tebworth by the Little Chef.

We started at "The Queen's Head" at 10 AM with 17 of us, got to "The Fancott Arms" at about 1pm, clocking 5.6 miles. Some continued, some left some others joined.

15 of us left again at around 2.30 and were back in Tebworth around 4.15. 10.8 miles in total. This is the first time I measured it on my GPS tracking tool so my previous estimates of 13 some miles were way out!! [The little girl, right, was just a curious onlooker].

To find out more about this and historic Chalgrave look on www.chalgrave.org



Wedding of Sue Leuty and Ray Willis



Congratulations to Sue & Ray who were married on 10th March. Pete "The Dutch" acted as chauffeur in his Rolls Royce and they held a great party at the hall which was packed!

As well as Ray and Sue's families, there were many villagers both "old" and "new" and it seemed as if anyone who had ever been into the Queen's head was invitedand most came!!

Colin did the bar and Morgan provided the music assisted by most of the Friday night regular singers. Lots of food and a wonderful wedding cake given by Mark & Tracy from Home Farm. It was one of the most enjoyable village events for a long time.



CHALGRAVE NEWS

Advertising And Useful Contacts

To advertise in the Chalgrave News, please contact
the Editorial team via our email

thechalgravenews@live.co.uk

Or

01525 877327 / 01525 873963 / 01525 877149

*When contacting an advertiser, please
remember to mention you saw them in the
Chalgrave News*

Advertising - June 2012

Advert

**We look at the whole
of the market !!**

- Independent Mortgage & Financial Advice

- Advice on family and mortgage protection -

- Life
- Critical Illness
- Income Protection
- Accident & Sickness
- Unemployment
- Buildings & Contents

we have access, and can also provide -

- Pension & Investment Advisers
- Conveyancers
- Loans & Commercial finance
- Debt Management, IVA

Think carefully before securing other debts against your home. Your home may be repossessed if you do not keep up the repayments on your mortgage.

**Stuart Brown
Mortgage Services**

call Stuart on 01525 877650

stuart

advice@sbms-online.co.uk
www.sbms-online.co.uk



local, friendly, professional

K & K PETFOODS

**YOUR FRIENDLY LOCAL PETFOOD SHOP
WHATEVER YOUR NEEDS,
WE CAN SUPPLY**

Horse Feeds and Equipment

Large range of Dog and Cat foods
(e.g. Hills, IAMS, Eukanuba, Beta, Bakers and many more)

Weekly special offers on canned food

All small animals catered for

HOME DELIVERY SERVICE AVAILABLE

Open Mondays to Saturdays
(closed Wednesdays)

**Market Square, Toddington
01525 872003**

PIANO & KEYBOARD TEACHER

**ABRSM GRADES FOR
PIANO & THEORY**

**I teach all levels of piano
and all types of music**

*For further enquiries
please contact*

**CATHERINE MOORE:
01525 288180**



Professional Workwear and Country Wear Superstore

Store Open
7 days
a week



Rugged & Tough

Barbers Open
Tuesday, Thursday &
Friday 9am-5.30pm
Saturday 9am-2.30pm



HI-VIZ Orange or Yellow

Save 33%

Starter Pack Deals
All this for £99 inc vat

Bomber Jacket x 1
Trousers x 1
Vest x 1
Polo or Ts x 3
Safety Boots En345 x 1

Visit us for even more Work Wear Deals



JOBMAN

WORKWEAR

Pirate Shorts

with Kneepad pockets
½ PRICE to Clear



BLÅKLÄDER
WORKWEAR

Garden Range..It's not
just for the Professionals..!

Mens and Ladies

Garden Trousers
with Kneepad Pockets

Free Kneepads
with every Pair

"Take the pressure off your knees this summer"!



Hen, Stag & Party
Classic White T-Shirts
Chest & Back Printed **£8.99**



carhartt.
NEW
ARRIVALS
NOW IN
STORE

Hockliffe Village Barbers

Special Offer: 5 cuts for the price of 4

Bring this Advert with you each time

MEN: £10 BOYS: £7 OAPs: £5

Scissors & Clippers

All Over Cuts £6

Clippers only

(Nervous Toddlers Welcome)

| | | | | |
|---|---|---|---|----------|
| 1 | 2 | 3 | 4 | 5 |
| | | | | FREE CUT |

all Images are for illustration purposes only

Rugged & Tough

(Opposite Post Office)

Hockliffe, Bedfordshire LU7 9LS

t: 01525 211488

e: sales@ruggedtough.com

www.ruggedtough.com





Punch Opticians

Eye care and eye wear for all the family

- ♦ Professional, friendly, qualified opticians and contact lens practitioners
- ♦ Private. NHS and corporate eye examinations (*eye care vouchers accepted*)
- ♦ All contact lenses supplied and fitted
- ♦ Designer sunglasses: Oakley, Chanel, Rayban, Dior, Gucci, Maui Jim and more
- ♦ Range of children's frames

Free pair of prescription sunglasses with every complete pair of glasses purchased

Pop in anytime, a warm welcome always awaits.

Browse and try on with **no obligation** and **no hassle**.

18 High Street Toddington LU5 6BY

01525 875099



Make your house a home with blinds and awnings from Vansar Blinds...

- * Local family run business
- * Large range of fabrics & colours
- * Choose in the comfort of your own home
- * All blinds made to measure
- * **FREE MEASURING & QUOTATIONS**

**For a Friendly and Reliable Service
Call**

01525 220477 or 01582 699565

www.vansarblinds.co.uk

Child-Minding

I am a responsible and mature girl (Yr 10 student), available for child-care in the evenings/ weekends.

I live in Tebworth, and so will be able to easily get to homes in Tebworth and Wingfield.

£5 an hour

Contact: **Imogen Parry**
on either:

01525 875 169



**CUT & FINISH RANGE
FROM £27 - £47**



We welcome you to experience our glamorous studio incorporating different mood areas to offer a more deluxe service.



Our fully qualified hair stylists understand that style and colour is uniquely personalised to suit your features, compliment face shape, skin tone and individual personality.



Please telephone for further information, help and advice.

Sleek & effortlessly sophisticated
THE 'STUDIO LOOK'... TURNS HEADS

**8 MARKET SQUARE, TODDINGTON, LU5 6BS
01525 876 778 WWW.PAR-SNIPS.COM**

OPENING HOURS

MON CLOSED
TUES 9AM - 8PM
WED 9AM - 8PM
THU 9AM - 8PM
FRI 9AM - 7PM
SAT 8AM - 5PM
SUN CLOSED

NEVILLE Funeral Service

Independent and Family Owned

Private Chapels of Rest

Flower and Memorial Services

Pre-arrangement and Pre-payment advice

24 hour emergency service

*NEVILLE HOUSE
MARSH ROAD
LEAGRAVE, LUTON
01582 490005*

*THE OLD CHURCH
FLITWICK ROAD
AMPTHILL
01525 406132*

Ark House Vets

'we care like you care'

Caring & professional healthcare for your pets

- Friendly
- Local
- Convenient
- Easy parking
- Pet food delivery
- Healthy pet club
- Puppy playgroup
- Weight Watchers
- Exotics Service
- Neutering
- Microchipping
- Acupuncture
- Physiotherapy
- Wormers and flea treatment
- Modern Diagnostic Facilities
- Preventative health care
- Behaviour Clinic
- All Domestic Pets Welcome



01525 373329

22 Hockliffe Street,
Leighton Buzzard LU7 1HJ
(between Countrywide & Connells)



INVESTOR IN PEOPLE

www.arkhousevets.co.uk

Find us on facebook



AJ AUTOS (TODDINGTON) LTD

MOT Centre and Mechanical Repairs

Free local delivery and collection

Other services include:

- MOT's
- Tyres
- Exhaust
- Servicing
- All major repairs



- Competitive Pricing -

Opening Hours: 8.00am – 6.00pm Monday - Friday

17-19 High Street, Toddington, Beds. LU5 6BX

Tel: 01525 872630

Panache



Call or visit to receive your FREE hair and beauty consultation from our friendly and experienced team.

- Toni and Guy trained stylists
- L'oreal Advanced Colour Technician
- Wedding hair trained by Patrick Cameron
- Minx nails
- Dermalogica facials
- Fake Bake spray tans

01525 873031
HAIR&BEAUTY
panachehairbeauty.co.uk

Gift vouchers available
Senior citizen discount Mon - Weds
10% Student discount Thurs - Fri

Visit our website for exclusive discounts.

glover and Co Accountancy and Tax Solutions

Accounts Tax CIS VAT

**Bookkeeping Payroll
Business Start Ups**

Chartered Accountants
Unit 2 Hockliffe Business Park,
Watling Street,
Hockliffe, Beds LU7 9NB

t: 01525 210085 f: 01525 210095
e: info@lindseyglover.co.uk
w: www.lindseyglover.co.uk

IWD Decorating Services *Est since 1987*



- Local, Reliable & Friendly
- All Work Guaranteed & Fully Insured
- All Aspects of Interior & Exterior Decorating
- Plastering
- Wall and Floor Tiling
- Carpentry
- Plumbing

**01525 874062 / 07796
931172**

email: iwd.services@btinternet.com

JUST 30
PLACES AVAILABLE

Incredible 2012 Golf Membership Deal

GREAT GOLF AT AFFORDABLE PRICES

UNLIMITED GOLF Including FREE GOLF at 23 other courses!!

ONLY £450 per annum

OR £45 PER MONTH WITH NO JOINING FEES!

£50 DEPOSIT SECURES YOUR PLACE NOW FOR MEMBERSHIPS
COMMENCING 1st March, 1st April, 1st May

SPECIAL OFFER: Test drive Chalgrave Golf Club
in March or April for **£19** midweek (anytime)
and **£26** at weekends (after 11:00am)
upon presentation of this advert.

Tel: 01525 876556



Dunstable Road,
Toddington, Beds LU5 6JN

www.chalgravegolf.co.uk

steve@chalgravegolf.co.uk

LADIES: FREE Trial Scheme!!

Have a **FREE 1 hour lesson!!**
3 month Trial Membership for £99!!!

For full details email steve@chalgravegolf.co.uk
Or call in at the clubhouse



Stoten Gillam
chartered accountants
chartered tax advisers

www.stotengillam.co.uk

Practical Solutions for Growing Businesses
Providing a Personal Service

FREE Initial consultation for:

ACCOUNTS * SELF ASSESSMENT * AUDIT
BOOKKEEPING * CORPORATION TAX * PENSIONS
PAYROLL SERVICES * VAT * TAX ENQUIRIES



99 High Street South
Dunstable
LU6 3SF
Tel: (01582) 608601



CAPELLO HAIR DESIGN

www.capellohairdesign.co.uk

*Come and meet our
friendly experienced team*

Complimentary Consultations

**Conditioning treatments to suit all hair
and scalp conditions**

Wedding and Prom hair up

Loyalty System

10% Student discount - Monday to Thursday

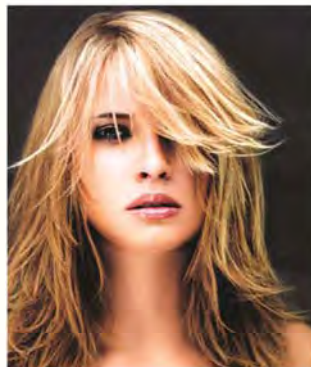
Appointments not always necessary

FREE Parking

TIGI L'ORÉAL



REDKEN INOA



26 High Street, Toddington
Beds. LU5 6BY

01525 877599

GIFT VOUCHERS AVAILABLE

VIEW OUR WEBSITE TO ENTER A
FREE MONTHLY PRIZE DRAW



Toddington Fencing Co

Professional Fencing Specialist

All types of Fencing and Gates

Security Fencing • Patios • Decking

Single & Double Gates • Concrete Work

Fence Panels • Trellis • Power Washing

Your Local Fencer

Best Prices

30 Years Experience

Free Quotes

www.toddingtonfencing.co.uk

Tel: 01525 876007

Mobile: 07909 907631

14 Bradford Road, Toddington, LU5 6EQ



Joyce's Professional Alterations

Alterations & Repairs Undertaken
Trousers, Jeans, Skirts, Curtains, etc.

Also: Embroidered Occasion Cards
made to order

You can find me next to CAPELLO Hair
Salon at:

26, High Street, Toddington

Monday, Tuesday, Wednesday & Thursday
10am to 3pm

Please call in.1582 619177
Mobile: 07989423389



Toddington Mowers

Professional and Domestic Garden Machinery Servicing

Shears Hedge Cutters Strimmers
Mowers (Petrol and Electric)
Rotorvators Ride on Mowers
Any other Garden Equipment



Free local collection and delivery
Concessions for OAPs

07949 178971 (mobile)

Friendly and efficient service

Bob Williamson
The Old Dairy, Long Lane Farm, Toddington
Email: bob@toddingtonmowers.co.uk

STUART DREW ELECTRICAL SERVICES

****Part P Certified** **Member of the ECA****

From extra lights & sockets to rewires.
For a professional, courteous service with
free estimates and all work guaranteed,
please call me.

Fully Qualified & Insured
Over 30 Years Experience

29 Lincoln Way
Harlington
Beds.
LU5 6NG

Telephone
01525 875965
07941 812662



Theresa and Roger Burden
Welcome you to

THE PLOUGH INN

Wingfield

16th Century Coaching Inn
Fullers Brewery

Serving Good Food & Real Ales

Front & Rear Gardens

Large Car Park

Conservatory (also available for hire for
private parties up to 25 people)

Quiz night every other Sunday evening

Cribbage and dominoes teams

Discount for local residents on Monday and Tuesday
evenings (on production of voucher)

Telephone: 01525 873077
Website: www.theploughinn.com
Email: rogerandt@theploughinn.com

The Pretend Grass®

Supplier & Installer Of Artificial Grass
No More Mud, No More Mowing!

- * Huge range of shades and ultra-realistic piles to suit all requirements and budgets.
- * Full landscaping service also available, from a simple path to a complete garden transformation.
- * Quality products and workmanship ... guaranteed.
- * FREE quotations.

01525 211380
www.pretendgrass.co.uk

Visit our showroom at:
**Hockliffe Business Park, Watling St, Hockliffe,
LEIGHTON BUZZARD, LU7 9NB**

Open Mon to Sat

S Winter Property Services

Local, Reliable, Honest, Friendly Service

20 Years Experience
References available on request
Discounted rates for OAPs

Services:

All aspects of carpentry
Kitchen and Bathroom fitting
Decking and Fencing
Patos and Block Paving
Drains unblocked
Gutters repaired and cleaned
Pressure Washing

Tel: 07580 350494
10 St Mary's Close, Tebworth,
Beds. LU7 9QF
steve.winter17@yahoo.com

UNIQUE FURNISHINGS

OFFICE BEDROOM LOUNGE BATHROOM
DINING GIFTS ACCESSORIES
MADE TO MEASURE FURNITURE

MIJANOU

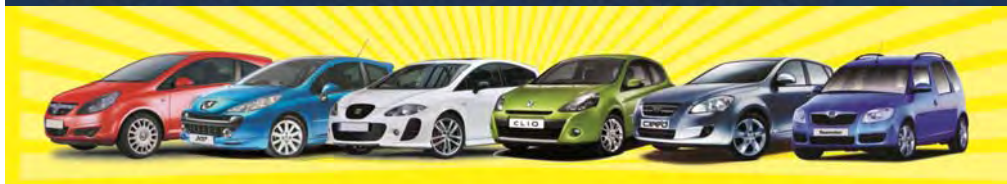


MADE TO MEASURE FURNITURE

Mijanou Unique Furniture,
Unit 8, Hockcliffe Business Park,
Watling Street, Hockcliffe,
Beds, LU7 9NB

TEL: 01525 211117
opening times:
Monday - Saturday 9.30 - 4.30
www.mijanou.co.uk

WRIGHT VEHICLE SOLUTIONS



**Don't Forget Big
Discounts on
Servicing, Repairs
and MOT's!**



- **Free Delivery and Collection for Tebworth and Wingfield Residents**
- **Free loan car if you need one**
- **Nobody beats us on price or quality for anything!**
- **See Back Page For full Advert**

**Contact Wright Vehicle Solutions Ltd
and speak to John Parker**

www.wvsgroup.com

01908 366668

Elite Motor Services

for complete car care!

Thorn Farm, Thorn, Nr. Dunstable, Beds. LU5 6JH

☎ **01582 606507**

www.elitemotorservices.co.uk

- Servicing - all makes and models to a high standard and without invalidating your manufacturers warranty
- Air Conditioning Service and Repair
- General Repairs
- Fault Finding Diagnostic Service - to all vehicle systems
- Tyres and Exhausts
- MOT Service - taking your car from Pre-MOT Inspection through to certification

A long term established local business
with highly experienced certified technicians

Car collection service available

Call us for friendly advice and
check our competitive rates

***Your One Stop Motoring Solution
with Quality Service Guaranteed!***



D. Daize
Mob. 07831 403377

D. Andrews
Mob. 07799 350386



TRUGREEN®

Professional LawnCare



Want a great lawn
without the work?

- FREE 14-point lawn analysis
- Weed and moss control
- Fertilisation
- Pest control
- Re-turfing
- Re-seeding

**Contact
TruGreen**

**South Bedfordshire & Bucks
on**

01908 376689

www.trugreen.co.uk

A Denman & Father Family Butchers

High Class Meat
& Poultry

Home Made Sausage
Specialist



Market Square
Toddington
Beds.

Tel: 01525 872 303

HOME COMPUTER HELP

Problems with your computer?

Slow running or been hit by a virus?

Do you need someone to untangle your
computer problems?

Do you need help in working with your
computer?

Maintenance or repairs?

Or just general computer advice?

- I live in the parish and can help you
- I am a Microsoft Certified Professional
- Free initial consultation
- Friendly efficient service at very reasonable rates

**If you need help please call Scott
for a no obligation discussion on**

**07941 19 00 71 or email
homecomputerhelp@hotmail.com**



Beautiful curtains, hand made in our own studio - lined or interlined with luxurious finishing touches

A S Q U I T H
I N T E R I O R S
Est. 1978

36 Market Square, Toddington, Bedfordshire LU5 6BS. Telephone 01525 872077

THE BATHROOM & TILE ART STUDIO



Be inspired... visit our showroom at:-

**Unit 1 Hockliffe Business Park, Watling Street,
Hockliffe, Beds LU7 9NB**

Telephone: 01525 211611

Fax: 01525 211024

www.bathroomandtileart.com



Registered Osteopaths & Cranial Osteopaths

Osteopathy
Cranial Osteopathy
Naturopathy
Pregnancy Massage
Sports Massage

01525 875474

www.tomclinic.com info@tomclinic.com

**A wide range of conditions may benefit from the whole body approach in
Osteopathy:**

General aches & pains including postural changes in pregnancy & chronic illness.

Joint, Rheumatic & Arthritic Pains including hip & knee pain from Osteoarthritis.

Backache, Back pain, Lumbago and Sciatica.

Neck pain, Headache & Migraine prevention.

Nerve pain (Neuralgia).

Fibromyalgia.

Frozen shoulder, Shoulder & Elbow pain.

Circulatory problems, Cramps, Muscle spasms & inability to relax.

Digestion problems.

Sports Injuries.

In **babies & children**, many infancy & childhood conditions may be helped.

Appointments available: **Mon – Fri 8am-10pm Saturday 9am-6pm**

T.O.M. Clinic, 25 Church Square, Toddington, Bedfordshire, LU5 6AA

**Proud to be serving Toddington
and surrounding villages**

Nisalocal
www.houghtontrading.com



Sue White & Gary Bilbrough



Now Have Branches at:

- Nisa Local: 10 Hillborough Crescent, Houghton Regis, Beds
- Post Office & News: 8 Hillborough Crescent, Houghton Regis, Beds
- Nisa Local: 1 Neptune Square, Houghton Regis, Beds
- Nisa Local: 40 Dunstable Road, Toddington, Beds
- Nisa Local: 110 Crabtree Lane, Hemel Hempstead, Herts
- Nisa Local: Elstree & Borehamwood Station, Herts
- Nisa Local: 7-9 The Glebe, Stevenage, Herts
- Rupa Tandoori: 87 Mobbsbury Way, Stevenage, Herts



**Great Offers, Great Range, Great Service,
Free ATM's and more.....**



ADRIENNE'S

PRIVATE HIRE

07980 039 715



Airport Transfers & Private Hire
All Major Airports, Luxury Air Conditioned Vehicle
Up to 6 People at Very Competitive Rates

DIGGERS & DRIVERS

For Hire

- Driveways
- Foundations
- Garden Clearance
- Site Clearance
- Access No Problem
(Diggers from 700mm Wide)
- Dumper & Grab Service
- 7 Days A Week
- All Areas Covered

For Advice, Enquiries and Reliable Service Call Us Now On

01525 877234 or 07855 321781

Email: lydonj6@aol.com www.diggermanhire.co.uk

To advertise in
this space please
contact us.

Email:

thechalgravenews@live.co.uk

Or call

01525 873963

01525 877327

Toddington Fishery



Toddington Fishery is set in a quiet corner of rural Bedfordshire. Originally dug out some 15 years ago and stocked with a variety of coarse fish including roach, perch, tench, bream, with carp to 22lb and catfish to 37lb.



Toddington Fishery, Herne Farm Cottage
Toddington, Bedfordshire LU5 6HH
Tel: 07855 321 781



The Chalgrave Games

Saturday 14th July 2012

Can you help the Chalgrave Games
be a day of swashbuckling fun?

We need donations of:

- Old crockery for plate smashing games
- Bric a brac
- Tombola Prizes
- Prizes for the grand draw (*1st Prize £100*)
- Your Time – can you spare an hour to man a stall?

Could you be a Sponsor for the games?

All sponsors will be advertised at the games.

If you would like to donate any items or
become a Sponsor, please contact
Su Parker on 01525 873963





Recreation Ground, Eversholt MK17 9DT

Eversholt Pool, for those who have not been to visit, nestles between the cricket pitch and the picturesque village hall in the centre of Eversholt at Church End.

Originally opened in 1920 at the behest of the then Duke of Bedford, who it is said was somewhat fed up with locals using his fishponds behind Linden House (where the cricket pitch now is) as their own impromptu swimming pools. So the pool, pretty much as it is today, was created and fed by the ponds themselves through a single pipe that still exists (albeit not used) and via an outlet under a metal cover behind the kids paddling area.

The pool was closed during 1958/9 by the local authority who felt the toilet facilities and the water supply were not up to 'standard'. This caused a local outcry and a village fundraising committee was set up to try to re-open the pool and bring it up to 'modern standards'. In May 1961 the pool was re-opened by their graces the Duke and Duchess of Bedford. In the early 1990's the pool once again set out on fundraising activities to bring the facilities 'up to standard'. With lots of local fundraising, this time 'matched funding' from local government and by then lottery funded Sports foundations, many £000s were raised and in 1996 the formal opening of the new Kiosk and changing facilities took place. The kid's paddling pool was created and most importantly we put picture windows in to the pool wall so that avid cricket fans could continue to watch the ferocious pace of play and cool off all at the same time.

The **heated pool** continues to be run by an active committee and a raft of local lifeguards. Things have of course changed, running costs have shot up dramatically in the same way they have for us all, particularly electricity and insurance. Health and Safety is much further up our agenda and so our staffing costs are higher and we limit the numbers of people in the pool area at any one time. Opening hours have been extended with season ticket only sessions and private hire is available, details of these and current pricing are shown at www.eversholtvillage.co.uk/swimmingpool. We are also going social and now have a twitter account #eversholtpool which we hope to be able to use to give real time data on what's happening, from pool temperature to how busy the pool is on a given afternoon (it is early days on this though).

An insider tip is to come when the weather is hot but slightly overcast and if you are unsure or we are not 'tweeting' correctly by all means **give us a call during opening hours on 01525 280515** – we look forward to seeing you.

Chalgrave Memorial Hall

Fees and Charges effective from 1st November 2011

| Period | Parish Resident Individual and Parish Voluntary Community Groups | **Non-Parish Resident or Parish Commercial | **Non-Parish Organisation/ Commercial |
|----------------------------|---|--|---|
| MONDAY TO THURSDAY | | | |
| 9am – 6pm | £4 per hour | £8.00 per hour | £9.50 per hour |
| 6pm – 11pm* | £5 per hour | £11.50 per hour | £13.50 per hour |
| FRIDAY | | | |
| 9am – 6pm | £4 per hour | £8.00 per hour | £9.50 per hour |
| 6pm – 12 midnight* | £70 | £135 | £155 |
| SATURDAY | | | |
| 9am – 6pm | £6 per hour | £11.50 per hour | £13.50 per hour |
| 6pm – 12 midnight* | £70 | £160 | £210 |
| 12.30 pm – 12 midnight* | £105 | £215 | £275 |
| SUNDAY | | | |
| 10am – 10pm* | £6 per hour | £11.50 per hour | £13.50 per hour |

****NB. Hall must be vacated and locked up by this time.***

- Bank Holidays/New Years Eve - Rates on application
- Committee Room available for hire separately when Hall not hired - Rates on application
- **Block/Regular booking discount of up to 15% available
- Bookings outside above hours subject to individual rates on application.
- Non-refundable deposit of 50% of the booking fee payable to confirm booking.
- £100 damage deposit required on all bookings - refundable in full subject to no damage caused to Hall, contents, equipment or grounds and the Hall and grounds being left in a clean and tidy state. NB should the cost of reparation to the Hall contents or equipment exceed the deposit then the Committee reserve the right to pursue the balance.

**FOR BOOKINGS PLEASE TELEPHONE:
07831 482556**

Useful Contacts

| | | | |
|---|---|--|------------------------------|
| Chalgrave News Editorial Team | Emma Gray/Su Parker/ Barbara Jackson | thechalgravenews@live.co.uk | 01525 877327 01525 873963 |
| Police Community Support Officer | PCSO Scott Burgess | scott.burgess@bedfordshire.pnn.police.uk | 01582 473409 07956 427670 |
| Member of Parliament | Andrew Selous | selousa@parliament.uk | 01582 662821 |
| Secretary to Andrew Selous | Sue Howats | howats@parliament.uk | 01582 662821 |
| Chairman Parish Council | Phil Parry | | 01525 875169 |
| Vice Chairman Parish Council | Ken Green | | 01525 874107 |
| Parish Council Clerk | Mrs Lesley Smith | chalgravepc@btinternet.com | 01525 874716 |
| Councillor | Daniel Osborn | | 01525 873920 |
| Councillor | Roger Mence | | 01525 874516 |
| Councillor | Derek Smith | | 01525 874105 |
| Councillor | Debbie Hampson | | 01525 877149 |
| Councillor | Sharon Brown | | 01525 876148 |
| Councillor | Mark Versallion | mark.versallion@centralbedfordshire.gov.uk | 0300 3008555 |
| Central Beds Unitary Council | | | 0300 300 8000 |
| Rector Chalgrave Church | Rev Anne Crawford | www.chalgravechurch.org.uk | 01525 872298 |
| Church Secretary | Bev | | 01525 210161 |
| Chairman Chalgrave Memorial Hall | Roger Masters | | 01525 873039 |
| Memorial Hall Booking Secretary | Debbie Hampson | | 07831 482556 |
| Senior Citizens Committee | Roger Masters | | 01525 873039 |
| West Charity—Clerk to Trustees | Norman Costin | | 01525 874232 |
| Chalgrave Sports/Cricket Club | Roger Burden | | 01525 873077 |
| Book Club | Noeleen Thomson | | 01525 872168 |
| Beavers/Cubs/Scouts | David Yirrell | | 01525 875410 |
| Rainbows/Brownies/Guides | Gill Hiscox | | 01525 875239 |
| Toddington Medical Centre | | www.toddingtonmedicalcentre.co.uk | 01525 872222 |
| Toddington Library | | | 01525 873626 |
| Electricity Board (Emergency) | | | 0800 7838838 |
| Water Board (Emergency) | | | 0845 7145145 |
| Tree Warden | Tony Smith | | 01525 874716 |
| Head: St Georges Lower School | Mrs Jane Spencer | | 01525 872360 |
| Head: Parkfields Middle School | Mr Brandon Bravo | | 01525 872555 |
| Head: Harlington Upper School | Mr Shawn Fell | | 01525 755100 |
| Toddington Childcare | | Playgroup/am & pm school clubs | 01525 875400 |
| Helping Hands | | | 07882 988270 |

Chalgrave Parish Assembly 2012



We had a relatively good attendance, 34 in all, and it went very well. The speeches were short and the refreshments were good!

Everyone seemed to enjoy finding out what was happening in the Parish and the chance to ask questions and chat afterwards. No Police officers but two PCSO's came late because they didn't know where the hall was which was rather worrying!

There were some heated debates about the Chalgrave Golf Club and the projected housing north of Houghton Regis. I'm sure we get better attendances than most parishes but it would be nice to get a really packed hall next year!!

Grumpy Old

Spent a pleasant hour or so at the Parish Council Annual Assembly the other day. For those of you who weren't there, amongst other things, we were treated to a visit from the Police Community Support Officers who are responsible for Tebworth.



There was only one major problem that I could see. Until that evening, they had never been to Tebworth before, and had to stop at the Plough to ask for directions to the Memorial Hall! We are fortunate that we live in a low crime area but if anything unfortunate should occur please ensure that it is when the Plough is open. That way you can rest assured that PCO Plod may well show up... eventually!

A "Why I love living here moment" In a local shop recently when the lady serving me called across to the customer at the next checkout who was buying 2 pints of milk " You can put that back, your wife came in 20 minutes ago & bought milk & a loaf" - it wouldn't happen in Tesco

The Plough Beer Festival

And so "Dear Reader" (dear as in the cost of my endeavour on your behalf). Frankly as you know I seldom touch that stuff but for you in the name of reportage then a chap has to, and whilst our host insisted time and time again that I drink at no cost, of course I could not do this. Therefore at no little expense, for fear of being accused of bias or loss of perspective and balance (a baseless accusation was made late on Saturday) had nothing to do with free beer. Indeed the management at The Plough have insisted again that I stress this is not a feature of their premises. really can't imagine why.

When, on your behalf, I visited on Friday the first of (and Theresa seemed to think an almost nonstop) 5 day event, trade was: Friday night-ish, Twenty Four people having a quiet drink, albeit a number (and two is a number) of campers invaded; additionally an advance party of Tebworthians. They had "all" sojourned to imbibe some 10 beers and cider. This in addition to what are described as the excellent house beers.

Saturday saw a real invasion of people and Tebworth-ites for a BBQ and Disco with beer almost a side issue (?).



Chairman of the parish council arrived to open the festivities only to be told he was a day late so could not make a speech and there was no ribbon to cut!

As the evening wore on we learned that one of the crowd had hastened to The Plough instead of celebrating his (I am sure) well earned gold award in the Clarinet (class) of the Hockliffe "Have I got talent" competition. The prize, I am reliably advised, a box of Heroes. Nothing compared to the heroism at the Plough as people sought to clear the pub of food and drink. Converting coin of the realm and HM beer vouchers.

Then the news broke "He's leaving Friday". "Who?" The crowd enquired clamouring, as one, for further news and concerned for more information, even now I can hear you ask the same,Robinson Crusoe!

Indeed at this stage we realised that the Apple Juice being consumed in quantity was a brew called "Old Rosie". Another attendee was heard to be concerned by the array of Stripes, Hoops and Checks. Due to possible Health & Safety implications, The Parish Council are to discuss, that in future (should another such event be permitted) that men should only be allowed to wear plain shirts.

Finally I am pleased to confirm that no damage was caused when one customer flew headlong from the conservatory across the floor.....I witnessed no damage to property so expect no claims to be made as a result. By Sunday evening many brews were done for. As for Monday..... well dear reader I go now for you, as a duty, to find out.

Theresa ,Roger -----Thank you !!!! A great weekend.

Paul Levy



*Congratulations to
Alison & Steve on their engagement*



The Plough

Our beer festival was back for the second time and was held from Friday 1st June to Tuesday June 5th. There was approximately 15 beers and two ciders on sale.



We have now started a takeaway menu of fish and chips, scampi, burgers etc.. Hopefully everyone should have received a menu but if not there are some available at The Plough.

The quiz night is very popular and is held every other Sunday. The remaining June date is the 24th and then 8th and 22nd July and every other week thereafter. The quiz starts at 8pm.

The Thursday whist and tippie society is still popular and anyone who fancies a game of cards is welcome. Starting time is 9pm.

The domino season has finished and we sadly fell away and finished about halfway. We will be looking for new players for the next season which will start in September.

The crib season has started and both teams have made good starts. Again anyone wishing to play should contact Roger at The Plough.

The cricket season should have started and any new players over 16 are welcome. Please contact Roger at The Plough.

Anyone wishing to find out what is happening at The Plough can visit our website.

www.theploughinn.com

Queens Head Update

Well, what a wonderful summer we had. I think it must have been one of the shortest 'since records began' and here we are now in mid June, the longest day is on the 21st and I haven't turned off the heating yet! Still, we are made of stern stuff us British, just look at my Auntie Liz as she braved all sorts of weather on that boat trip down the River Thames on the 3rd of June, she never sat down once!

The best of it is that if she didn't sit down then no one else could sit down (protocol you know) Poor old Philip suffered though didn't he, of course he's not British like us he's a Greek but nevertheless we wish him a speedy recovery.

Quite a lot has happened at the Queens Head since the last publication of this smashing little magazine of ours, the trouble is that at my age I can't remember what it was, but it must have been enjoyable 'cos the customers keep coming back.

I do remember that some of the regulars are organizing some BBQ's this 'summer', but I don't think that any dates are decided yet, I suppose it all depends on the weather and who knows when it will stop raining, even though we are still experiencing a drought!! Just keep your eyes on the notice boards outside the pub.

I want to thank all those unsung heroes who organised the Diamond Jubilee Street Party I know that there will be a fabulous article with photos in the Mag so I won't say too much about it but there was a veritable hoard of parishioners that attended, many of whom I had never met before, so it made it a really pleasant day for me if not for them!

All the usual activities are still going on in the pub such as the darts team who are doing well and the dominoes team, who are getting themselves a good reputation within the 'dommie' community as not only a difficult opponent, but also a good fun team to play for, so why not come and meet them one Saturday night; they don't bite - well they don't swallow anyway.

I look forward to seeing all the new friends I met at the street party in the pub in the next few weeks and wish all of you a very happy and eventful summer.

See you soon

Colin



Will the hosepipe ban make us water wise?

Hosepipe bans are now in force across the South East of England. This follows the fifth driest March recorded since 1910. There is a risk of even greater restrictions this summer but will this make us water wise?

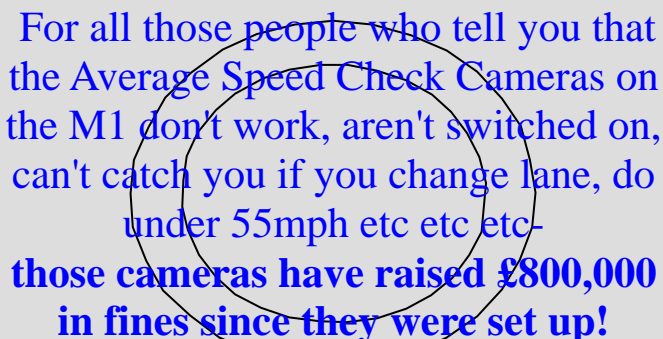
If you are a keen gardener you'll understand the value of water. You may have connected a water butt to your roof guttering down pipe to collect rainwater. Perhaps you routinely water your garden in the evening and water plants at their base so less of the water evaporates. But when was the last time you thought to water your household plants with your used bath water?

The Energy Saving Trust estimates UK households use on average 350 litres of water a day. Most of us could use less. We could, for example:

- Avoid leaving taps running when washing vegetables and dishes
- Install an aerating shower head (replacing $\frac{1}{2}$ the water with air bubbles)
- Fit a graduated flush device to toilets (to stop flushing 7 litres each use)
- Fix a dripping tap and save up to 5500 litres of water a year

Some homeowners take even more radical steps. This includes storing rainwater in 3500 litre underground tanks and using rainwater to feed loos and washing machines. They say that clothes washed in rainwater actually come out cleaner. You can quiz these eco pioneers to find out more at annual open home events in spring and September.

See www.superhomes.org.uk for details.



For all those people who tell you that the Average Speed Check Cameras on the M1 don't work, aren't switched on, can't catch you if you change lane, do under 55mph etc etc etc- **those cameras have raised £800,000 in fines since they were set up!**

Please remember to drive slowly through the villages, especially once the weather improves as there are plenty of parents pushing buggies/joggers/ walkers and residents on mobility scooters.

On Saturday 5 May a coach full of extremely excited girls and supporters left the Green in Toddington

destined for AFC Kempston – the venue for the Girls County Cup Final football match. Our opponents were Bedford who play in a higher league than us, frequently meeting the likes of Tottenham Hotspur! We had fought hard to reach the final, beating our League Champions to earn our place. Our Manager, **Richard Swan**, assisted by **Ralph Harper** and **Kate Costin**, put on extra training to up fitness!

Toddington started strongly and took the game to Bedford and were unlucky not to score after some good break aways. Beds FA tweeted about how we were on top, but the key 1st goal eluded us.

Bedford took the lead after almost half an hour and then got a 2nd goal soon after. Finally, they got a 3rd on the stroke of half time. The scoreline just did not reflect how well we played. The girls were still in good spirits and their heads remained high. We started the 2nd half incredibly well, chasing, battling and making accurate passes. Bedford scored a 4th but again we were undaunted and we upped our work rate - what brilliant attitude from our girls!

With minutes to spare we pounced and sprinted into Bedford's half, lobbing the keeper and gaining our long awaited goal. The girls rightly celebrated and the crowd went wild! **Final Score - Bedford 4 Toddington 1 – a very respectable score.**

Our girls had given 100% and shown

COUNTY CUP FINAL TODDINGTON ROVERS U16 GIRLS

outstanding ability. For all but 15 minutes we had at least matched Bedford.

Ellie Meredith did great in goal and her kicking was top notch. **Evie Jackson** did a great job at left back, her throws were superb as was her passing. **Abi Stanford** had one of her best games and helped create the goal. **Katie McCann** was immense as she competed with Bedford's best player. **Beth Wright** played sweeper like she had played their all her life.

Our midfield "fought like tigers", ran non-stop and passed the ball so well, **Laura Jackson** created and toiled, **Adie Harper** and **Charlotte Batcock** gave their all for the cause and **Ella Swan** galloped down the wing and played in some great balls.

Upfront **Charlie Bailey** had her best ever game and her touch was superb.

Finally, **Henny Horsler** got what she deserved, a great goal as she never gave up.

Although **Kayleigh Russell** and **Kristie Keyte** were unable to play, they showed excellent team spirit by warming up the girls and joining our supporters. We partied hard at the Social Club on our return!

This was a day that the girls will never forget, they gave their all and played the game as it should be.



Many thanks to all that came to support us and make the day so memorable.



Chalgrave Games

Saturday 14th July starting 1 pm

dog registration 12:30 pm



Chalgrave Memorial Hall

Grand Prize Draw £100



surf simulator



craft table

childrens games

dog show

cheek painting

welly wanging

Beer & Pimms tents

rifle range

bbq food

watersports

side stalls



come in your pirate gear or walk the plank!

L





The Chalgrave Games

Saturday 14th July 2012

Can you help the Chalgrave Games
be a day of swashbuckling fun?

We need donations of:

- Old crockery for plate smashing games
- Bric a brac
- Tombola prizes
- Prizes for the grand draw (*1st prize £100*)
- Your time – can you spare an hour to man a stall?
- Cakes donations (*bring to hall on the day*)

Could you be a Sponsor for the games?
All sponsors will be advertised at the games.

If you can help with any of the above, please contact
Su Parker on 01525 873963

West's Charity Claims Deadline

The deadline for West's Charity claims is **30th June**.

Remember, you can claim for anything that is deemed to be helping the education of anyone aged 24 and under who reside in Hockliffe or Chalgrave.

So, if you belong to an organised group such as Beavers/Scouts/Rainbows/Brownies, etc or are receiving lessons in music, sports or the performing arts, you can make a claim.

You may find it beneficial to include a note of explanation with your claim, and always include receipts for each item you are claiming for.

The above are only a few examples, a complete set of guidelines and application forms can be found on the Chalgrave website **www.chalgrave.org**.

Garden Competition

This year, as well as noting your usual fantastic beds/borders/baskets/ or window boxes, we will be especially looking out for your displays with a Jubilee theme.

So, if any of you still have any planting to do, you may like to consider a red/white/blue scheme.



We look forward to viewing your efforts. Results will be announced in the next edition of the News.

If you would like to submit your own photographs, please email them to:

thechalgravenews@live.co.uk

Chalgrave Games Water Games & the Hosepipe Ban

When Anglian Water announced the hosepipe ban, starting Easter weekend, the organisers of The Village Games sprang into action.

The highlight of the Games is always the Water Games at the end of the day and we would not want to have to forfeit this.

I e-mailed Anglian Water, explained that we built the pool & filled it from a bowser. They replied that providing the bowser itself is not filled using a hosepipe connected to a domestic water supply, then we could go ahead.

So kids – and grown ups – rest assured you will have your water games.

See you there!

Debbie Hampson.

Grumpy Old.....

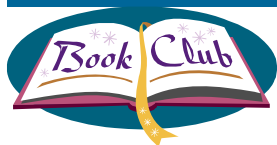
If you use Luton airport in the summer you will probably know that for £3.00 per person you can 'fast-track' yourself through security on your way out of the UK. This, of course, should not be necessary if the airport was run properly... but it isn't - so it is!



This small cost, on top of the ridiculous charges for flying nowadays, disguised under the umbrella of 'Climate Change' (in other words an excuse to put up taxes) is a small price to pay in order to by pass the interminable queues. Problem is, they don't offer a similar option for when you come back in! Don't know about you, but I would happily pay a bit extra to avoid queuing for hours while the under staffed Border Agency get around to letting me back in to the country where I have lived all my life.

Now is the time to start targeted controls, they know who's coming in, because you have to fill in a form weeks in advance of travel to tell them. Stop interrogating Granny, holiday makers and the like and start going after the people who need going after, they know exactly who they are so let's get with the program and stop hiding behind Political Correct nonsense! That way travel might be made slightly more enjoyable again.

Clubs & Committees



Clan of the Cave Bear

A novel set 30,000 years ago in prehistoric times – didn't sound too exciting initially by many of the Book Club, but what a surprising read this was! The first of a trilogy written by Jean M Auel it tells the story of Ayla, a young girl orphaned after a violent earthquake and is rescued by a Clan. She is very different from them, being blonde and blue-eyed while they are short, stocky and dark. She has to learn to adapt to their ways, and obey them at all times, which is a struggle for her as she is stronger and more intelligent than they are, which makes her very unpopular with certain members of the Clan, but is also much loved by others.

The writing is fabulous, and makes you truly believe that this was how things were 30,000 years ago, from the description of the landscape, the characters and the beliefs of the people. Ms Auel has managed to create the ancient world of Neanderthals in such a believable way and makes for a really great read.

Thoroughly enjoyed by all of the Book Club.

The Blackhouse

Written by Peter May this was a completely different read to the previous book. Set on the Isle of Lewis in Western Scotland, it starts off as a relatively simple murder case which has similarities to another murder in Edinburgh. This is what brings Fin (detective and ex-islander) back to his homeland to investigate. The investigation is interspersed with flashbacks to Fin's fairly

unhappy childhood growing up on the Island. The images of the Island are extremely well done and very atmospheric, from the inclement weather conditions to the harsh realities of island life and the struggle of the community to keep their long lived traditions alive.

Part of the story revolves around the annual Guga hunt to cull gannet chicks on a tiny barren rock some forty miles out into the Atlantic – an intriguing insight into this annual tradition which still occurs today but its future is in doubt due to pressure from animal rights and the rapidly diminishing population of the Island.

A very well received book with a very unexpected twist at the end.

The Snow Child

The Snow Child by Eowyn Ivey is a classic fairytale story. Set in the 1920's a couple decide to flee the city life and escape to the Alaskan wilderness mainly to heal the pain of losing their stillborn child. They struggle to farm their small homestead and battle the cold and lonely winters, until one day, during a rare moment of fun they find themselves building a snow child from the newly fallen snow. The next day the snow child has gone but is replaced by a real one, or is she! Is she real or a figment of their imagination born out of pure grief of their dead child? When she appears only during the winter and leaves at the first sign of spring, you begin to suspect she isn't real, but things take a surprising turn and you really can't put this emotional book down. Most of the Book Club loved this book, one or two thought it a bit slow.

Noeleen Thomson



Chalgrave Memorial Hall

Last year turned out to be quite successful despite the doom and gloom of the general economic situation, with bookings up on the previous year. It is very satisfying to see the Hall continuing to be well used. Consequently we were able to forgo the annual grant from the parish council. Sadly, our forecast for income and expenditure for this year is such that we will need to reinstate our request for assistance to enable us to avoid a significant rise in fees and charges. Chalgrave Memorial Hall continues to be one of the most economical halls for hire in the county. Our Letting rates are amongst the cheapest in the County despite increasing them to take account of inflation although hire charges to parishioners have not been increased and remain heavily subsidised.

New fees and charges effective from 1st November will be agreed at our Annual General meeting to be held later in the year.

Last year, following more unnecessary vandalism, we installed CCTV at the hall and trust it will act to deter further problems. Other improvements to the Hall have been the repainting of our play equipment, and some repainting inside.

Which brings me to an issue which we seem to mention every year.

Whilst we truly love to see the children of the village using the Hall field to play football, we are very concerned at the antics of a few who seem to take pleasure in kicking footballs at the windows. Consequently there are already chips appearing. This really is unacceptable and we would ask anybody witnessing this to report the offenders to any member of the Hall Committee. Our CCTV cameras are in operation so hopefully we will be able to spot the offenders. We really do not want to go down the path of putting up metal grilles to the windows to avoid further damage.

Just a further reminder. When the Hall is hired, the premises and grounds are included in the hire. It is solely at the hirers discretion as to whether the play area and or the grassed area can be used.

Please remember the World famous Chalgrave Games are on Saturday 14th July. Our theme this year is PIRATES, so feel free to dress appropriately.

Finally, I would like to take this opportunity of thanking all those members of the Parish who have given their time and effort to Support the Hall over the last year and look forward to another successful year in 2012.

Everybody's Entitled To My Opinion

Mention of 28,000 new houses to be built not that far from where we live. Perhaps if successive Governments stop allowing all and sundry into this country we would not need to build so many to house people who probably shouldn't be here in the first place! Follow the lead of Australia and let in those who are of benefit to the country. We have been socially engineered to accept the fact that we live in a multi-cultural society and if you dare criticise it, you are a racist! These issues need discussing now, otherwise we will have no room left on this cramped little island we call home.



I notice that the water companies have made themselves look ridiculous once again, this must be the wettest drought on record but we still can't use a hosepipe!



Old Time Music Hall

Performances on 7th & 8th December.

We have a cast this time!

But we still need more performers - it's good fun and you will enjoy the experience. Give it a go!

If you would like to be onstage or help backstage, please contact:

Brent Wilkes: 07859 041793 or Phil Parry: 07831 605600





Chalgrave Sports Club

The fixtures for the coming season are finalised and can be viewed either at The Plough or on The Chalgrave Sports website.

Net practice started in March and anyone wishing to attend should contact The Plough for more information.

The season should have started but this drought situation means the pitch is still waterlogged.

Two dates coming up are:

- 1) **Sunday June 17th** which is the 10/10 cricket competition, where all four sides play each other in a 10 over a side competition. This is a good day out and there will be a bar, a barbecue together with Barbara and Ann's famous chilli. Fencing will be provided to provide a safe watching area.

This event is usually well attended and we look forward to seeing you all there.

- 2) **Saturday 6th October** we are holding a presentation night at The Chalgrave Memorial Hall which incorporates a race night. This is our annual fundraiser and we would welcome everybody looking for a good night out.

The entrance fee (to be decided) will include food e.g. fish and chips, chicken and chips, sausage or pie and chips whichever you decide. Tickets will be on sale at The Plough and at The Queens Head.

The presentations will not last long, only from the league and 10/10 winners, so everyone can carry on winning on the horse races.

www.chalgravesportsclub.co.uk

Roger Burden

Mill End Nursery

Nowadays, when many garden centres bear more resemblance to department stores than plant nurseries and one can have difficulty finding the plants or anything relevant to them, it is heartening to visit a traditional nursery that is in touch with its roots both literally and metaphorically, placing the emphasis squarely on the plants rather than unrelated merchandise.



Mill End Nursery, on the road **between Harlington and Sharpenhoe**, has been run for just over a year by **Andrew Asbury, a colourful former resident of Wingfield**, whom many of you may remember. Andrew worked tirelessly to refurbish this nursery, which was a finalist in 2 categories of the Garden Retail Awards 2011, for 'best business development, new build, refit or launch' and 'Employee of the Year' (Dale Pain). You are assured of a very warm welcome, and Andrew and his colleagues can always find the time for a friendly chat and useful advice on horticultural issues.

There is a huge selection of good quality plants, shrubs and trees – chilli plants are a particular speciality and several varieties are on offer. In the summer you can pick your own tomatoes, and at Christmas you can rent a tree which will be delivered to your home attractively potted up, collected afterwards for your convenience and looked after throughout the rest of the year until you need it again. Mill End Nursery is renowned for its hanging baskets, created to order by Martin Burgoine who has been involved with the Nursery his entire life, and Judy the onsite florist will make up a bouquet to your specific requirements. There are some beautiful, excellent quality gifts available for purchase, and some antique items too in 'Granddad's Shed', but all of these are specifically related to gardening and are a complement to the main business which is overwhelmingly the plants.



Andrew is keen to support local businesses and sells locally produced fruit and vegetables, honey and free range eggs, cheeses from Hitchin and speciality breads from the Cottage Bakery in Ampthill. Locally made chutneys, pickles and jams are also on offer and much of the profit from these is donated to the Multiple Sclerosis Society. Farmshop food boxes are available, made up to your individual specifications using seasonal produce and can be delivered if required. As well as doing your bit for our local economy, as an added bonus much of the produce is priced more reasonably than the supermarkets.

If wandering around all the greenhouses has made you hungry or thirsty, there is a café where you can enjoy a nice hot drink and a good selection of delicious home made cakes – Sue's fruit and almond slice is the most divine cake I have ever tasted! In the future there are plans to expand the selection of food on offer to include soups and light lunches, all prepared using fresh ingredients from the nursery wherever possible.

During school breaks the Nursery puts on a Kid's Gardening Club, this runs from 10 to 12 each Wednesday and welcomes children aged from 14 months to 14 years! Places can be booked online, in person or by phone on 01525 872385.

This is a Nursery that embraces traditional ideals and is overwhelmingly community-orientated.



For further information, latest news and details of special offers, check out their website www.millendnursery.com or look for them on Facebook <http://www.facebook.com/millendnursery>.

Drop in and pay them a visit, you will not be disappointed.

Julia Marsh



The Honest Truth (according to Lord Blackadder)

Baldric: "What I want to know sir is, before there was a euro there were lots of different types of money that different people used. And now there's only one type of money that the foreign people use. And what I want to know is, how did we get from one state of affairs to the other state of affairs?"

Blackadder: "Baldric do you mean, how did the euro begin?"

Baldric: "Yes, sir"

Blackadder: "Well, you see Baldric, back in the 1980s there were many different countries all running their own finances and using different types of money. On one side you had the major economies of France, Belgium, Holland and Germany; and on the other, the weaker nations of Spain, Greece, Ireland, Italy and Portugal. They got together and decided that it would be much easier for everyone if they could all use the same money, have one Central Bank, and belong to one large club where everyone would be happy. This meant that there could never be a situation whereby financial meltdown would lead to social unrest, wars and crises.

Baldric: "But this is sort of a crisis, isn't it sir?"

Blackadder: "That's right Baldric. You see, there was only one slight flaw with the plan"

Baldric: "What was that then, sir?"

Blackadder: It was b*****s!

Everybody's Entitled To My Opinion!

And another thing!!..... As just about everybody I have spoken to agrees with me that we should get out of the EU, preferably tomorrow, why doesn't the Government listen? Where is the referendum? They won't dare do it because they know what the answer will be. Oh, and please, do not tell me that we can't because of the amount of trade we do with them. In case you hadn't noticed Europe (apart from Germany) is skint, the emerging markets of China and India are where the future lies.

I know that I have a very simplistic view on the world but there is no need to complicate things unnecessarily! We put £45 million / day into the EU and spend 12 billion /year; YES £12 Billion that is ring-fenced and due to increase enormously, in foreign aid. How about spending it at home? Should sort out the deficit in fairly short order? Now how simple is that?!

For all information about the Parish of Chalgrave visit www.chalgrave.org



Clips from old time music halls and old concerts



Memorial Hall



Old Photos



Regularly updated with news and events



All Saints wall paintings



Chalgrave Heritage Trail



History

Deadline for next edition: 10th September

Please submit entries by email to:

thechalgravenews@live.co.uk

Or by phone to:

Emma: 877327/ Su: 873963 / Debbie: 877149

*Note: Where possible please submit written articles as a **Microsoft Word** document, ready for publication, and photos as a jpeg.*

Remember, we welcome your own stories and photos, so please get in touch if you have anything you would like to include in the News.

Riddles



1. What belongs to yourself, but is used more by your friends than by yourself?
2. What is that everybody has seen but will never see again?
3. Which is the smallest bridge in the world?
4. Spell "enemy" in three letters

A wife returning from a fishing trip with her husband was telling her troubles to a neighbour. "I did everything all wrong again today," she said. "I talked too loud, I used the wrong bait, I reeled in too soon, and I caught more fish than he did."



Good News!

Whoever it is building the new Junction 12 has nearly finished it, and it would seem to me in record time! And, the stupid 50mph limit has been lifted between 11 and 10, soon we will all be able to travel at a proper speed on the M1....As long as it is not in the rush hour when there will be a variable speed limit, and although we do not know what the rules are going to be on hard shoulder running, it can't be as bad as it has been for the last, errr, what seems to be 10 years.....can it?

Riddle Answers

1. Your name
2. Yesterday
3. The bridge of your nose.
4. F O E.

Only in Britain!

Extracts from actual letters of complaint written to local councils

1. It's the dogs mess that I find hard to swallow.
2. I want some repairs done to my cooker as it has backfired and burnt my knob off.
3. I wish to complain that my father twisted his ankle very badly when he put his foot in the hole in his back passage.
4. Their 18 year old son is continually banging his balls against my fence.
5. I wish to report that tiles are missing from the outside toilet roof. I think it was bad wind the other day that blew them off.
6. My lavatory seat is cracked, where do I stand?
7. I am writing on behalf of my sink, which is coming away from the wall.
8. Will you please send someone to mend the garden path. My wife tripped and fell on it yesterday and now she is pregnant.
9. I request permission to remove my drawers in the kitchen.
10. 50% of the walls are damp, 50% have crumbling plaster, and 50% are just plain filthy.
11. I am still having problems with smoke in my new drawers.
12. The toilet is blocked and we cannot bath the children until it is cleared.
13. Will you please send a man to look at my water, it is a funny colour and not fit to drink.
14. Our lavatory seat is broken in half and now is in three pieces.
15. I want to complain about the farmer across the road. Every morning at 6am his cock wakes me up and it's now getting too much for me.
16. The man next door has a large erection in the back garden, which is unsightly and dangerous.
17. Our kitchen floor is damp. We have two children and would like a third, so please send someone round to do something about it.
18. I am a single woman living in a downstairs flat and would you please do something about the noise made by the man on top of me every night.
19. Please send a man with the right tool to finish the job and satisfy my wife.
20. I have had the clerk of works down on the floor six times but I still have no satisfaction.
21. This is to let you know that our lavatory seat is broke and we can't get BBC2.
22. My bush is really overgrown round the front and my back passage has fungus growing in it.
23. He's got this huge tool that vibrates the whole house and I just can't take it anymore.

WVS has moved to new undercover premises - still in Bletchley (see address below).



Don't forget our special offers on servicing and repairs for local residents. Call John Parker on the number below.



WRIGHT VEHICLE SOLUTIONS

RAC Inspected vehicles

- **UP TO 80 VEHICLES IN STOCK AT ALL TIMES**
- **FINANCE AVAILABLE**
- **PART EXCHANGE WELCOME**



www.wvsgroup.com

01908 366668

**Dane Road, Bond Avenue, Bletchley,
Milton Keynes MK1 1JQ**

