

# CHALGRAVE NEWS

*The free community magazine delivered to homes and businesses in the Chalgrave Parish*



Publication No. 50 March 2016

# Dates for Your Diary

Day/Date	Event	Location/Contact	Time
3 <sup>rd</sup> Tuesday of each month	Parish Council Meeting	Memorial Hall	7.30 pm
Every other Sunday	Quiz Night	The Plough	8.00 pm
Mondays	Dominoes	The Plough	
Fridays and 4 <sup>th</sup> Wednesday of each month	Live entertainment	Queen's Head	7.30 pm
Wednesdays	Darts	Queen's Head	
Thursdays	Dominoes	Queen's Head	
Weekdays	Book Club	Noeleen Thompson	
2 <sup>nd</sup> Tuesday of each month	WI	Memorial Hall	8–10 pm
Sunday, 20 <sup>th</sup> March	An evening with clairvoyant, Denise Newman – <i>see p 35</i>	The Plough	8 pm
Saturday, 16 <sup>th</sup> April	<i>Chalgrave News</i> Annual Quiz – <i>see p 40</i>	Memorial Hall	6.30 pm
Tuesday, 26 <sup>th</sup> April	Annual Parish Assembly – <i>see p 15</i>	Memorial Hall	7.30 pm
Sunday, 1 <sup>st</sup> May	Rogation Day Walk – <i>see p 5</i>	Queen's Head	10.00 am <i>sharp</i>
Saturday, 14 <sup>th</sup> May	Queen's 90 <sup>th</sup> Birthday Street Party – <i>see p 39</i>	Tebworth	Afternoon
Saturday, 25 <sup>th</sup> June	Chalgrave Games – <i>see p 39</i>	Memorial Hall	To be announced
Sunday, 17 <sup>th</sup> July	Classic & Prestige Car Day	The Plough	Noon

**Front Cover:** The *News* was getting reports that ducks had returned to the Great Pond of Tebworth but no one was able to provide the team with a decent photo. So step in one of our top photographers who patiently staked out the pond for many hours, until finally rewarded with the stunning image that is featured on our front cover.

**Deadline for next edition:  
Monday, 16<sup>th</sup> May 2016**

Please submit entries by email to [thechalgravenews@live.co.uk](mailto:thechalgravenews@live.co.uk)  
or by phone to Roger Parker on 01525 874910

# Editorial

Dear Readers, Welcome to the 50<sup>th</sup> edition of the *Chalgrave News*!! The 1<sup>st</sup> edition, in its present format, was published in the Spring of 2002 and here we are, fourteen years later, still going strong. Who would have predicted that in 2002? Would anyone care to place a bet on whether we will make it to the 100<sup>th</sup> issue, expected in late 2028 if we continue at the present rate of four copies a year? I won't tell you where I'd put my money!

Time rolls on and Christmas may seem just a distant memory. Luckily, you can rely on the *News* to revive those memories because it's in the March issue that we cover the many events of the festive season. So you can read here about the switching on of the lights in St Mary's Close, the Senior Citizens' Christmas Lunch, carol singing in The Plough and the visit to Chalgrave by Santa and his band of elves. Relive Christmas in this issue!

But we're not just reporting on Christmas. In the pages that follow there is an account of the latest Chalgrave Beer Festival, the fourth in a series organised by the *Friends of the Queen's Head*. Plus, we also record an attempt by The Plough to assist in breaking a Guinness Word Record. As well as that, we have a fascinating article about Hallworth Farm, the home of Robert and Kate Flitton, which reveals a remarkable story about the farmhouse and Rob's ancestors. And then Julia Marsh, owner of Chops (or should that be the other way round?) has written about another high-spirited porcine rebel who goes by the name of Pickwick. Elsewhere, our local economist, Peter Warburton, discusses the problems associated with traffic lights, and our local vet, Peter Harding, relates how his sense of humour has landed him in trouble. Naturally, we also have the usual informative and entertaining articles and comment from our regular team of indefatigable writers.

Don't forget that between now and the next issue, the *News* will be holding its popular Annual Quiz. More details are to be found on page 41 but, with a fish and chip supper thrown in, it's good value at only £9 per person – and there's always the chance of your team landing the first prize of £100. Please help the *News* to keep going by supporting our Quiz.

Finally, I must mention that Chalgrave WI is looking for a male model for a life drawing class – so if any of you chaps have nothing on in October please contact Debbie Parry.

RP

This edition of the *Chalgrave News*, as well as past editions, can be read online at [www.chalgrave.org](http://www.chalgrave.org). Also visit this website for information on the Parish Council, parish history, the Memorial Hall, local organisations, and much, much more.

*The Chalgrave News team produces the Chalgrave News in good faith and we do all we can to ensure that no offence is caused to any individual or organisation.*

*We also reserve the right not to publish articles and contributions submitted to us if they do not comply with our policy.*

# Chairman of the Parish Council

*From the Parish Council.....*

**Parking.** We are aware that parking in Tebworth is sometimes challenging. However, please park with care for other road users and pedestrians. Concerns have been raised about the parking on the corner of Wingfield Road and Toddington Road. Vehicles should not park close to the corner as this restricts visibility for motorists turning into Wingfield Road. The Highway Code specifies a distance of 10 metres from a junction.



**Crime.** Rural crime is on the increase. There have been a number of burglaries in our area. **It is important that you report anything you consider suspicious to the police.**

**Tebworth Pond.** The next stage of the pond restoration is underway. Now that it has been dredged we are working on the surrounding area. We will be clearing the banks and painting the railings. We will be getting advice on planting. If you are interested in helping and maintaining the pond please contact Cllr Barbara Jackson on 877617.

**Parish Assembly.** The annual Assembly is on 26<sup>th</sup> April. It will be the usual informal event with representatives from Parish organisations as well as our Central Beds Councillor and MP. Everyone from the Parish is invited.

**Defibrillator.** We will be arranging another training session with Community Heartbeat for those who have expressed an interest in being part of the Village Emergency Telephone System (VETS). If you are keen to join this group please contact any of the Parish Councillors.

**Speedwatch.** Cllr Mike Wells leads and organises our Speedwatch activities on Toddington Road and in Wingfield. The team monitors speeds every month. Drivers who exceed the limit are reported to the Police. The vehicle activated sign on Toddington Road is in the process of being repaired.

**Dog Bin.** A new dog bin has been installed close to the farm gate on Chalgrave Road. A number of dog owners use the paths across the fields there to walk their dogs. Please take 'poo bags' and use the bin. We have asked CBC to empty the dog bins in our Parish on a regular basis.

Finally, you are welcome to attend any of our meetings. They are usually on the third Tuesday of the month.

*Cllr Phil Parry, Chairman*



Don't forget to check the Chalgrave Parish website ([www.chalgrave.org](http://www.chalgrave.org)) and Facebook page (search Facebook for Chalgrave Parish) where the latest news is to be found, as well as information on forthcoming events.



# View from the House: Andrew Selous MP



Andrew Selous is the MP for South West Bedfordshire and can be contacted at [andrew.selous.mp@parliament.uk](mailto:andrew.selous.mp@parliament.uk) or at [www.andrewselous.org.uk](http://www.andrewselous.org.uk) or on 0207 2191741 or 01582 662821.

## NEW FIGURES SHOW THE PLAN TO HELP ONE MILLION MORE PEOPLE TO OWN THEIR HOME IS WORKING IN SOUTH WEST BEDFORDSHIRE

Andrew Selous has welcomed new figures showing the increase in housing supply in Central Bedfordshire, where there have been 1,520 new houses built since last year.

The official statistics show that the plan to make home ownership an achievable dream is working in Central Bedfordshire and across the country. With a 25 per cent increase in housing supply since last year, there are now 170,690 more new houses available for people who want good quality homes, both to rent and buy. These figures show that the Government is moving towards its ambition to create a million new homeowners by 2020, with the crusade to get homes built being realised in Central Bedfordshire.

Andrew commented: "These figures are excellent news, showing the number of houses available in Central Bedfordshire has risen giving a boost to the number of homes available for hardworking families and individuals.

"We want to give hard working people the security and stability of owning their own home, with government initiatives already having helped 230,000 people buy a home since 2010. We want to go even further and double the number of first-time buyers compared to the last five years and deliver 200,000 new Starter Homes at 20 per cent discount to first-time buyers under 40.

"I would recommend anyone aspiring to own a home of their own to log on to [www.ownyourhome.gov.uk](http://www.ownyourhome.gov.uk) to see what government help may be available to assist them buy a home of their own."

## Rogation Day Walk



This year's Rogation Day Walk is on **Sunday, 1<sup>st</sup> May**, leaving from the **Queen's Head at 10 am sharp**, stopping for lunch at the Fancott Arms around 1 pm and getting back into Tebworth around 5.30 pm. This is your chance to "Beat the Bounds" of Chalgrave because it is the only day of the year that we are legally entitled to walk those parts of the boundary that are not a public right of way.

Everyone is welcome. You may choose to walk just the morning or the afternoon session, or both. For more details of the walk contact Ken Green at [kenandlyn@tinyworld.co.uk](mailto:kenandlyn@tinyworld.co.uk).

## Unintended Consequences of Traffic Lights (... and other forms of traffic management)



This column explores the merits of letting people make responsible decisions themselves as against imposing a regulated solution from on high. While the idea of making a simple set of rules for everyone to follow may sound appealing, the reality is usually quite different. The basic problem is human nature. We are not all alike in our attitude to rules and regulations. Some will follow them to the letter and expect everyone else to do the same. Others will broadly follow the rules, particularly if observed by a police officer, but will finesse them according to circumstances. These two conflicting approaches are a recipe for trouble.

A recent report from the Institute of Economic Affairs, entitled “Seeing red: traffic controls and the economy”, documents the extraordinary increase in traffic management over the past 20 years. From 2000 to 2014, there was little growth in traffic volumes, yet the number of traffic lights on Britain’s roads increased by some 25 per cent. The number of junctions controlled by signals has risen to about 15,000 with a further 18,000 pedestrian crossings. The number of instructional traffic signs in England reached 4.57 million in 2013 – an increase of 112 per cent since 1993. Britain’s first speed camera was installed in 1992. By 2012 there were over 3,000 at 2,300 fixed sites. Monitoring now extends to large sections of the motorway network, a step change in the surveillance of motorists. The rapid expansion of bus lanes began in the late 1990s. In London they grew from 59 miles in 1997 to 172 miles in 2007.

The importance of the road network means the cumulative effect of these measures imposes an enormous burden on the UK economy. Just a two-minute delay to every car trip equates to a loss of approximately £16 billion a year. (That’s enough to run the NHS for 50 days). The authors argue that there is a strong economic case for replacing standard traffic regulation with strategies that harness voluntary cooperation among road-users. A high proportion of traffic lights should be replaced by filter-in-turn or all-way give-ways. Many bus lanes, cycle lanes, speed cameras and parking restrictions should also go. Culling such traffic management infrastructure would deliver substantial economic and social benefits. Are they correct?

Those of you who have travelled on US highways will know that traffic signals reign supreme. Roundabouts are still extremely rare. Yet, in a recent US study by the Insurance Institute for Highway Safety (IIHS), it was discovered that roundabouts reduced injury crashes by 75 percent at intersections where stop signs or signals were previously used for traffic control. Studies by the IIHS and Federal Highway Administration have shown that roundabouts typically achieve a 37 percent reduction in overall collisions, a 75 percent reduction in injury collisions, a 90 percent reduction in fatality collisions and a 40 percent reduction in pedestrian collisions.

There are several reasons why roundabouts help reduce the likelihood and severity of collisions: lower traffic speeds at the junction, no light to beat and one-way travel

around the island. Other benefits include reduced delay – roughly 20% relative to a 4-way traffic light – improved traffic flow, lower maintenance expense, insensitivity to power failures and frequently requiring fewer lanes on roads approaching the intersection. Roundabouts are not suitable in every circumstance and cyclists, in particular, find large ones intimidating. Food for thought as we prepare to negotiate the new roundabout at the bottom of Lord's Hill.

*Peter Warburton*

## Book Club



In November last year we had our annual lunch at The Birch in Woburn, and again this was a lovely occasion with great company and good food.

We have read two books this period, the first one was the **Black-Eyed Susans** by Julia Heaberlin. Seventeen year old Tessa was the only victim to survive a vicious attack by a serial killer, she was found in a grave with three other bodies and was dubbed a black-eyed Susan by the media because of all the flowers of the same name which grew around the grave. A man was arrested and found guilty of the murders and sentenced to death. Tessa makes a new life for herself with her daughter but decades later black-eyed susans are planted outside Tessa's bedroom window, plunging Tessa into doubt as to whether they had actually got the right man. The story is told from two perspectives, Tessa at 17 years of age, having just survived the attack, and Tessa in the present day helping investigators who think the man convicted of the murders may be innocent. A good suspense thriller with believable characters and quite a surprising end. Most of us enjoyed this one but it wasn't as highly recommended as the next one.

The second book we read was **After The Crash** by Michel Bussi, which was a brilliant mystery thriller that began with a plane crash in the Alps in 1980. There was only one survivor, a three month old baby girl, however, there were two baby girls listed as being passengers on the plane but no way of knowing which one she was. This was before DNA testing was available so it was more difficult then, than it would have been today, to determine which family she belonged to. Was she Lyse-Rose or Emilie? A judge had the difficult decision as to which family she should go to, the extremely wealthy de Carvilles or the loving, poorer Vitral's. Eighteen years later, private detective Credule Grand-Duc, having failed to discover her identity, plans to commit suicide, however, just before he pulls the trigger he uncovers a secret that changes everything.

We all enjoyed this book and some thought it was one of the best thrillers we have read so far. The only criticism was that it did tease you with the truth, just when you thought all would be revealed, another twist would happen only to prolong the agony. This was an extremely clever story with a great twist at the end, highly recommended.

*Noeleen Thomson*

# St Mary's Close Christmas Tree Ceremony

Despite the cold wind and damp atmosphere, a high-spirited crowd turned out on 28<sup>th</sup> November for the annual tradition of switching on the Christmas lights in St Mary's Close. As usual, Ray and Sue Willis had done themselves proud with a wonderful spread of food, accompanied by

mulled wine and whisky, both beverages much appreciated given the evening chill.

The all important task of turning on the display had been delegated to young Charlie Osborn, who timed the moment to perfection. After a short speech of thanks

Ray and Sue Willis had done themselves proud with a wonderful spread of food, accompanied by mulled wine and whisky, both beverages much appreciated given the evening chill. The all important task of turning on the display had been delegated to young Charlie Osborn, who timed the moment to perfection. After a short speech of thanks







from Phil Parry, Chairman of the Parish Council, followed by an enthusiastic countdown from the spectators, Charlie pressed the button with spot-on precision. Instantly, the lights came on to the cheers of the onlookers. The tree, in all its glory, was as magnificent as it has ever been, and was complemented by the carefully laid out



crib that sat below. To round off the ceremony there were rousing choruses of seasonal songs, led by the Great Harry Howden.



It was a tremendous evening which confirmed, once



again, the strength of the community spirit in Chalgrave. Thanks go to Ray, Sue and Harry for all their hard work in making the event a great success.

*RP*



## Snow in Chalgrave

When the annals of Chalgrave come to be written, no doubt much will be said about the **Great Blizzard of 17<sup>th</sup> January 2016** when villagers awoke to discover that almost 3 cm of snow had fallen in the space of just 8 hours, coating the landscape in a fluffy blanket of white for as far as the eye could see, if not beyond. Concerns that the snow might remain on the ground for weeks, cutting our villages off from civilisation (or, failing that, Toddington), were allayed when it had all melted by 11 am. But for a few tense hours, whilst the grown-ups fretted about whether The Plough would still get its deliveries, the children, innocently unaware of the hardships that might be ahead, just had fun. Fortunately, Emma Gray was up early enough to capture the drama for posterity with these brilliant photos.

*RP*



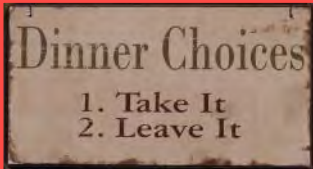
## Same again next year?

Could I possibly make a small request? Would it not be easier, more sensible, and make school term planning a lot better by having Easter at the same time every year!!!! I mean, there cannot be any sensible argument against it can there? Christmas is the same, New Year is the same, why on earth not Easter???

I may be a heathen, but I assumed that when you die, its anniversary date is the same each year???

This is 2016 not 1816, let's get with the program here!!!!

*JP*



## Senior Citizens' Christmas Lunch

The hall of Parkfields School in Toddington was packed on Saturday, 5<sup>th</sup> December, when more than 180 guests sat down for the annual Senior Citizens' Christmas Lunch, organised by the Rotary club of Flitwick Vale with help

from the Chalgrave Senior Citizens Club. Tebworth Rotarian Chris Osborn was the principal organiser and several residents from Chalgrave were among the diners. Naturally, there were plenty of volunteers to ensure that the lunch was a success and, as usual, a good number of "freelance" locals from Chalgrave came along to help the stalwarts affiliated with the Rotary Club, Inner Wheel and 41Club. Some good-hearted staff from Barclays Bank and Tesco were also there to lend a hand.

The guests were first served aperitifs to stimulate their appetites and then they tucked into a splendid Christmas lunch





of homemade tomato soup, followed by roast turkey with all the trimmings, and then Christmas pudding and custard.



Four dinner ladies from the school had toiled for many hours preparing this lunch and, it is a relief to



report, they were still in bubbly good humour at the end.



Mince pies and coffee or tea were still to come

but first the guests sat back to enjoy a magical display of choreographed dancing by girls from the Bedfordshire School of Dance and Drama. This was then complemented by the usual sing-song orchestrated by a regular at these occasions, Dave Johnston. The afternoon ended with spirited renderings of "We Wish You a Merry Christmas" and "Auld Lang Syne".

A straw poll of the guests indicated that the oldest person present was a lady of 95, who was awarded a bouquet of flowers. The oldest man was believed to be a 91 year old but a late contender then claimed to be 93, although he didn't make this known





until the bottle of Scotch had been presented to the younger man – luckily, he was also given a bottle. Of the married couples who were there, the claim for the longest union



was made by a couple who had tied the knot an amazing 65 years ago.

It should go without saying that an event of this size takes many months of planning and preparation and is only possible with the support of many generous sponsors and volunteers.

*RP*



## ANNUAL PARISH ASSEMBLY

This year's Parish Assembly will be held on **Tuesday, 26<sup>th</sup> April at 7.30 pm** in the **Chalgrave Memorial Hall**. As always, everyone is invited to this informal gathering to hear what's been going on over the past twelve months, and to discover what's planned for the following year. In addition to updates from local organisations in our community, reports will be presented by representatives from our Parish Council, from Central Bedfordshire Council, and even from our Member of Parliament. There will, of course, be plenty of opportunities to ask questions and raise concerns.

In keeping with tradition, the evening will be rounded off with delicious refreshments in the form of sandwiches, cakes and drinks—all free of charge. Last year there was a good turn out so let's repeat it this year!



## ALL DOG WALKERS – LOOK WHAT SANTA BROUGHT!!

A new dog waste bin has been installed along the Chalgrave Road (gateway beyond Home Farm heading out of Tebworth).

It is *your* legal responsibility to clear up after your dog **EVERYWHERE**. Please make use of this new facility so that no dog mess is left in the farmer's field.

## We're Pressing the Help Button!!

The *News* needs help! Su Parker and Emma Gray, stalwarts, pillars, champions, backbones, mainstays, linchpins and general good eggs of the *News* team are both hoping to reduce their involvement after 5 years' devoted service. In recent times, as well as organising our annual quiz and its raffle, they've been looking after our advertising. These key activities provide the essential revenue that keeps the *News* going.



We are looking for one or two volunteers to join the team who will take over (or assist with) the valiant work that Su and Emma have been doing. No specialist skills are needed – the only attributes required are enthusiasm and the willingness to engage with our advertisers and sponsors.

If you feel you could help or would like more information, we would love to hear from you. Please call Su on 01525 873963, Roger on 01525 874910 or email us at [thechalgravenews@live.co.uk](mailto:thechalgravenews@live.co.uk).

# Chalgrave WI



Hi everyone,  
I can't believe how much we have done since my last newsletter in early October! Some great pictures and lots of exciting things to look forward to – not least the WI Tea and Tents Camping weekend that seven of us will be attending in July. Tickets sold out within 15 minutes!



**December** was a busy month for us – we had a great session decorating cupcakes, ten of us visited Waddesdon Manor to lunch, to see the festively decorated rooms, browse the Christmas market and view the light installations in the garden, and twelve of us had a great meal at The Plough.



After the excesses of Christmas we were pleased to have Frances Masters run our **January** session focusing on how to



set and keep New Year's Resolutions. We also enjoyed a fabulous Burn's Night Supper at the White Hart at Flitton. In **February** we learned about CPR and First Aid.



The membership subscription for 2016 is £37.50 of which £18 is retained for Chalgrave and the balance goes to Bedfordshire and national WI organisations to fund county and national work.

Feel free to join us at a meeting if you want to decide if the Chalgrave WI is for you – just pay a £3 guest fee. Or contact me for a

chat. More information can be found on our Facebook page (*Chalgrave WI*), or follow us on twitter @chalgrave\_wi.





## Forthcoming Events in 2016 —

Date	Event	Location
Tue, 8 Mar	National Trust –Tudors/Bedes – Henry VIII’s links with Bedfordshire	Memorial Hall
Tue, 12 Apr	Annie Sloan paint demo – By Me Me Me – Leighton Buzzard	Memorial Hall
Wed, 13 Apr	“The Bodyguard” – Theatre trip – Bodyguard Musical, £39 pp	MK Theatre
Tue, 10 May	Quilts “Small is beautiful”	Memorial Hall
Tue, 14 Jun	Walk – Dave Bollins – Blue Plaques of Harlington – plus pub trip!!	Harlington
Tue, 12 Jul	Bees – Talk covering evolution, management and future	Memorial Hall
<b>Holidays</b>		
Tue, 13 Sep	Make-up demo and tips – Clarins team	Memorial Hall
Tue, 11 Oct	Life Drawing – a male model is being sought!	Memorial Hall
Tue, 8 Nov	AGM	Memorial Hall



*Debbie Parry, President – Chalgrave WI*  
*Email – [debbie.parry@accenture.com](mailto:debbie.parry@accenture.com)*  
*Mobile – 07770 543797*

**See our Facebook page for more photos!**

## More of “It Makes You Wonder!” ...

The following questions were set in a General Education Development examination in the USA. These are genuine answers, from 16 year olds.

Q. Name a major disease associated with cigarettes.

A. Premature death.

Q. What is a terminal illness?

A. When you are sick at the airport.

Q. What does ‘varicose’ mean?

A. Nearby.

*Ken Green*

## Calorie-burning Activities ...

Proper weight control cannot be attained by dieting alone but it seems that many of our readers do not realise that calories can be burned by undertaking activities that can be effortlessly completed whilst sitting comfortably in an armchair.

After intensive research the *News* team is able to present you with this guide to calorie-burning activities and the number of kcal per hour they consume –

Beating around the bush	75 kcal/h
Jumping to conclusions	100 kcal/h
Going round the bend	150 kcal/h
Swallowing one's pride	50 kcal/h
Passing the buck	25 kcal/h
Pushing one's luck	250 kcal/h
Making mountains out of molehills	500 kcal/h
Hitting the nail on the head	50 kcal/h
Bending over backwards	75 kcal/h
Running around in circles	350 kcal/h
Climbing the ladder of success	no idea, we've not managed this one



## Marriage ...

1. Married men should forget their mistakes. There's no need for two people to remember the same thing.
2. A study was done where it was discovered that married people live longer ... then they discovered it just feels longer.

### Children's Corner ...

*What do you call a sheep dog with a bunch of daisies on its head?*

*... A collie-flower*

**Knock, knock!  
Who's there?**

**Lettuce**

**Lettuce who?**

**Lettuce in, it's freezing out here!**



*What is a ghost's favourite fruit?*

*... Boo-berries!*

**A man visited his doctor with a banana stuck in one of his ears, a potato in the other ear, and a carrot stuck in one nostril. The man said, "Doctor, this is awful. What's wrong with me?" The doctor replied, "Well, first of all, you need to eat more sensibly."**

*Why did the banana go to the doctor?*

*... Because it wasn't peeling well*

**What is small, red and whispers?**

**....A hoarse radish**



**Our Scottish reader, Mr Greig, tells us that a notice has recently gone up at his local golf club which reads: "Members will refrain from picking up lost balls until they have stopped rolling". Sound advice!**

# *Chalgrave News*

## Advertising and Useful Contacts

To advertise in the *Chalgrave News*, please email  
**thechalgravenews@live.co.uk**  
or phone 01525 873963

### DIGGERS & DRIVERS

For Hire

- Driveways
- Foundations
- Garden Clearance
- Site Clearance
- Access No Problem (Diggers from 700mm Wide)
- Dumper & Grab Service
- 7 Days A Week
- All Areas Covered

For Advice, Enquiries and Reliable Service Call Us Now On  
**01525 877234 or 07855 321781**

Email: [lydonj6@aol.com](mailto:lydonj6@aol.com) [www.diggermanhire.co.uk](http://www.diggermanhire.co.uk)

*When contacting an advertiser, please remember to mention you saw them in the Chalgrave News*

## Toddington Fishery



Toddington Fishery is set in a quiet corner of rural Bedfordshire. Originally dug out some 15 years ago and stocked with a variety of coarse fish including roach, perch, tench, bream, with carp to 22lb and catfish to 37lb.



**Toddington Fishery, Herne Farm Cottag**  
**Toddington, Bedfordshire LU5 6HH**  
**Tel: 07855 321 781**

Helping Hands

The Home Care Specialists

Est. 1989



## Do you need a Helping Hand?

Our **local** care team has been providing award winning quality homecare since 1989.

A family run company we offer you a **one-to-one** 24 hour live in care service that enables you or your loved one to remain at home with compassion and dignity by assisting with: personal care, companionship, errands and housekeeping.

So if you are looking for an **alternative to residential care** or as a **short term answer** whilst recovering from illness or operation - then we're here to help.



To find out how we can help you,  
call: 0808 180 1016 or  
visit: [www.helpinghands.co.uk](http://www.helpinghands.co.uk)

Recruiting  
Carers  
Now

# Panache



Call or visit to receive your FREE hair and beauty consultation from our friendly and experienced team.

- Toni and Guy trained stylists
- L'oreal Advanced Colour Technician
- Wedding hair trained by Patrick Cameron
- Mixx nails
- Dermalogica facials
- Fake Bake spray fans

01525 873031  
HAIR & BEAUTY  
[panachehairbeauty.co.uk](http://panachehairbeauty.co.uk)

Gift vouchers available  
Senior citizen discount Mon - Weds  
10% Student discount Thurs - Fri

Visit our website for exclusive discounts.

# WRIGHT VEHICLE SOLUTIONS



**Don't Forget Big  
Discounts on  
Servicing, Repairs  
and MOT's!**



- **Free Delivery and Collection for Tebworth and Wingfield Residents**
- **Free loan car if you need one**
- **Nobody beats us on price or quality for anything!**
- **See Back Page for full Advert**

**Contact Wright Vehicle Solutions Ltd  
and speak to John Parker**

**[www.wvsgroup.com](http://www.wvsgroup.com)**

**01908 366668**



# FORGIVENESS MEETS FAST

WE MADE XR FORGIVING. BOEING MADE IT FAST

CLICK HERE



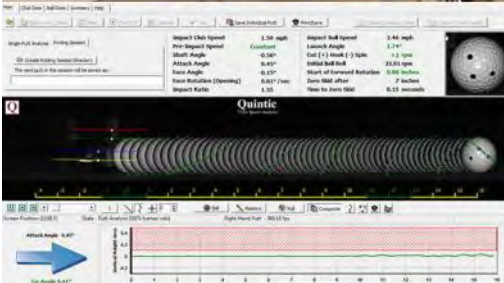
5% Discount off Online Products, Lessons and Simulation play, Pay online at Webiste [www.emgolf.co.uk](http://www.emgolf.co.uk) / Enter Coupon code at checkout: 5%Newsletter



Learn more at  
[www.emgolf.co.uk](http://www.emgolf.co.uk)  
[info@emgolf.co.uk](mailto:info@emgolf.co.uk)  
 07534664621



PGA PROFESSIONAL



# Elite Motor Services

*for complete car care!*

Thorn Farm, Thorn, Nr. Dunstable, Beds. LU5 6JH

☎ **01582 606507**

**[www.elitemotorservices.co.uk](http://www.elitemotorservices.co.uk)**

- Servicing - all makes and models to a high standard and without invalidating your manufacturers warranty
- Air Conditioning Service and Repair
- General Repairs
- Fault Finding Diagnostic Service - to all vehicle systems
- Tyres and Exhausts
- MOT Service - taking your car from Pre-MOT Inspection through to certification

A long term established local business  
with highly experienced certified technicians

Car collection service available

Call us for friendly advice and  
check our competitive rates

***Your One Stop Motoring Solution  
with Quality Service Guaranteed!***



D. Daize  
Mob. 07831 403377

D. Andrews  
Mob. 07799 350386

## Hallworth Farm – The Granary

Three self-catering cottages available for short-term rentals, each with two bedrooms, a family bathroom and an open-plan living space.

For enquiries, please visit our website, [hallworthfarm.co.uk](http://hallworthfarm.co.uk), or phone 01525 874 163.



To advertise in this space please contact  
the *Chalgrave News*:

Email:

**[thechalgravenews@live.co.uk](mailto:thechalgravenews@live.co.uk)**

Phone:

**01525 873963**

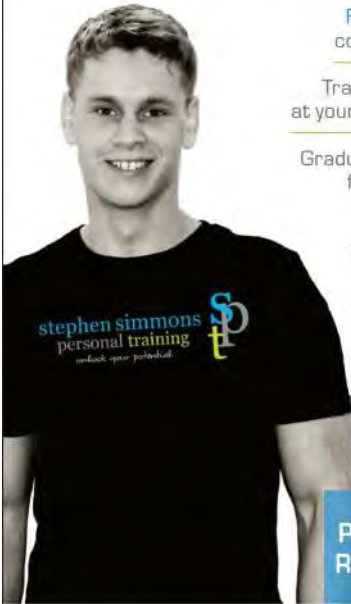


# Unlock Your Potential

## Worried about your health & fitness?

Too busy to fit exercise into your schedule?

Ever thought of having a personal trainer who comes to you?



FREE initial consultation

Train at home at your own pace

Gradual training for life-long change

Nutritional advice & support

PROVEN RESULTS

stephen simmons  
personal training  
unlock your potential



m: 07415 255372  
e: enquire@SPTlifestyle.co.uk

## VANSAR BLINDS

Make your house a home with blinds and awnings from **Vansar Blinds...**

- \* Local family run business
- \* Fabulous range of fabrics & colours
- \* Choose in the comfort of your own home or workplace
- \* **FREE MEASURING & QUOTATIONS**

For a Friendly and Reliable Service  
Call

01525 220477 or 01582 699565

e - sales@vansarblinds.co.uk

www.vansarblinds.co.uk



## *glover and Co* Accountancy and Tax Solutions

**Accounts Tax CIS VAT  
Bookkeeping Payroll  
Business Start Ups**

**Chartered Accountants**  
Unit 2 Hockliffe Business Park,  
Watling Street,  
Hockliffe, Beds LU7 9NB

t: 01525 210085

f: 01525 210095

e: info@lindseyglover.co.uk

w: www.lindseyglover.co.uk

# NEVILLE

FUNERAL SERVICE

Established 1875

**Reassurance when you need it most**



## **Neville Funeral Service**

Neville House Marsh Road

Leagrave Luton LU3 2RZ

t: 01582 490005

e: [luton@nevillefuneralservice.com](mailto:luton@nevillefuneralservice.com)



## **Neville Funeral Service**

The Old Church Flitwick Road

Amphill MK45 2NT

t: 01525 406132

e: [amphill@nevillefuneralservice.com](mailto:amphill@nevillefuneralservice.com)



**[www.nevillefuneralservice.com](http://www.nevillefuneralservice.com)**

Keeping you on your toes!  
& Helping you enjoy the Summer!



Give your feet a treat for just £28 per visit!  
Troublesome corns? Thickened nails? No problem!

**Call Sarah Greenaway** MCFHP MAFHP for a visit at  
a time to suit you, in your own home.

**Stay comfortable, mobile and independent!**

**01582 861583 or 07736 323 719**



[www.happy-toes.co.uk](http://www.happy-toes.co.uk)



**PUNCH**

Eyecare and eyewear for all the family

- ◆ Professional friendly qualified Opticians and Contact Lens Practitioners
- ◆ Private, NHS and Corporate eye examinations (Eyecare vouchers accepted)
  - ◆ All contact lenses supplied and fitted
  - ◆ Range of children's spectacles
- ◆ Designer sunglasses: Ted Baker, Bench, Joules, RayBan, Oakley etc.

*Pop in anytime, a warm welcome awaits.*

18 High Street, Toddington, Beds, LU5 6BY 01525 875099

# Ark House Vets

'we care like you care'

Caring & professional healthcare for your pets

- Friendly
- Local
- Convenient
- Easy parking
- Pet food delivery
- Healthy pet club
- Puppy playgroup
- Weight Watchers
- Exotics Service
- Neutering
- Microchipping
- Acupuncture
- Physiotherapy
- Wormers and flea treatment
- Modern Diagnostic Facilities
- Preventative health care
- Behaviour Clinic
- All Domestic Pets Welcome



01525 373329

22 Hockliffe Street,  
Leighton Buzzard LU7 1HJ  
(between Countrywide & Connells)



INVESTOR IN PEOPLE

[www.arkhousevets.co.uk](http://www.arkhousevets.co.uk)



Find us on facebook



## AJ AUTOS (TODDINGTON) LTD

### MOT Centre and Mechanical Repairs

**Free local delivery and collection**

**Other services include:**

- **MOT's**
- **Tyres**
- **Exhaust**
- **Servicing**
- **All major repairs**



**- Competitive Pricing -**

**Opening Hours: 8.00am - 6.00pm Monday - Friday**

**17-19 High Street, Toddington, Beds. LU5 6BX**

**Tel: 01525 872630**



## Joyce's Professional Alterations

**Alterations & Repairs Undertaken**  
**Trousers, Jeans, Skirts, Curtains, etc.**

**Also:** Embroidered Occasion Cards  
made to order

You can find me next to CAPELLO Hair Salon at:  
**26, High Street, Toddington**

Monday, Tuesday, Wednesday & Thursday 10am to 3pm

Please call in.

Tel: 01582 619177  
Mobile: 07989423389



**StotenGillam**  
chartered accountants  
chartered tax advisers

[www.stotengillam.co.uk](http://www.stotengillam.co.uk)

Practical Solutions for Growing Businesses  
Providing a Personal Service

**FREE** Initial consultation for:

**ACCOUNTS \* SELF ASSESSMENT \* AUDIT**  
**BOOKKEEPING \* CORPORATION TAX \* PENSIONS**  
**PAYROLL SERVICES \* VAT \* TAX ENQUIRIES**



99 High Street South  
Dunstable  
LU6 3SF  
Tel: (01582) 608601



# CAPELLO HAIR DESIGN

www.capellohairdesign.co.uk

*Our passion is hair and customer service thus creating  
an environment that you will want to return to.*

*We offer:*

- ❖ Colour Specialists
- ❖ Conditioning Treatments for all hair and scalp problems
- ❖ 10% Student discounts Mon-Thurs
- ❖ Discounts for senior Citizens Mon-Wed
- ❖ Loyalty System
- ❖ Free Parking

#### OPENING TIMES

Mon - Wed	9.00am - 5.30pm
Thursday	9.00am - 8.00pm
Friday	9.00am - 7.00pm
Saturday	8.30am - 4.30pm

26 High Street, Toddington  
Beds. LU5 6BY

**Tel: 01525 877599**



*Follow us on facebook and twitter*



## Toddington Fencing Co

Professional Fencing Specialist

All types of Fencing and Gates  
Security Fencing • Patios • Decking  
Single & Double Gates • Concrete Work  
Fence Panels • Trellis • Power Washing

**Your Local Fencer**

Best Prices

30 Years Experience

Free Quotes

**www.toddingtonfencing.co.uk**

**Tel: 01525 876007**

**Mobile: 07909 907631**

14 Bradford Road, Toddington, LU5 6EQ

JUST 30  
PLACES AVAILABLE

# Incredible 2016 Golf Membership Deal

**GREAT GOLF AT AFFORDABLE PRICES**

**UNLIMITED GOLF Including FREE GOLF at 30 other courses!!**

**ONLY £545** per annum

OR £54.50 PER MONTH WITH NO JOINING FEES!

**£50 DEPOSIT** SECURES YOUR PLACE NOW FOR MEMBERSHIPS

COMMENCING 1st **Monthly** in 2016

**NEW!!** The Chalgrave Chippers Family 7 Hole, Pitch and Putt Course!!

£10 per annum Membership covers the whole family!

£5 per round - cost per group, not per person!!

**Tel: 01525 876556**



Dunstable Road,  
Toddington, Beds LU5 6JN  
[www.chalgravegolf.co.uk](http://www.chalgravegolf.co.uk)  
[steve@chalgravegolf.co.uk](mailto:steve@chalgravegolf.co.uk)

**FULL Membership includes FREE golf at 30 Courses!!**

For full details email [steve@chalgravegolf.co.uk](mailto:steve@chalgravegolf.co.uk)  
Or call in at the clubhouse



**Local Logs, Split, Dried & Delivered  
Kiln Dried Firewood Logs**

**1 Bag @ £47.50, 2 bags @ £44 each, 3 bags @ £41.50 each**

**4 or more bags @ £37.50 each!! Inc Delivery!!!!**

**01525 876556 or email [steve@logs.co.com](mailto:steve@logs.co.com)**

**Barrow Bags are 50cm x 50cm x 100cm!!!!**



## Wright's delights



## Candy Cart For Hire

Weddings, Parties, Christenings. Whatever the occasion our Candy Cart can be decorated to suit. We have an extensive range of ribbons, bunting and many decorative pieces. The Candy Cart also has lights and looks very pretty at night.

For £140 we deliver and collect, set up, decorate, and provide a selection of sweets, utensils and sweetie bags.

For £90 you can hire the Candy Cart. Decorate it yourself and use for: Sweets, Cakes or Cheese & Crackers, etc.

For more information:

Email: [g.wright230@btinternet.com](mailto:g.wright230@btinternet.com)

Phone: 07940095982

## K & K PETFOODS

YOUR FRIENDLY LOCAL PETFOOD SHOP  
WHATEVER YOUR NEEDS,  
WE CAN SUPPLY

Horse Feeds and Equipment

Large range of Dog and Cat foods  
(e.g. Hills, IAMS, Eukanuba, Beta, Bakers and many more)

Weekly special offers on canned food

All small animals catered for

HOME DELIVERY SERVICE AVAILABLE

Open Mondays to Saturdays  
(closed Wednesdays)

Market Square, Toddington  
01525 872003

## IWD Decorating Services

*Est since 1987*



- Local, Reliable & Friendly
- All Work Guaranteed & Fully Insured
- All Aspects of Interior & Exterior Decorating
- Plastering
- Wall and Floor Tiling
- Carpentry
- Plumbing

**01525 874062 / 07796 931172**  
email: [iwd.services@btinternet.com](mailto:iwd.services@btinternet.com)

36 Toddington Road, Tebworth,  
Leighton Buzzard, Beds. LU7 9QD



## Toddington Tennis Club

Rear of Recreation Ground,  
Luton Road, Toddington,  
Beds.



We are a friendly Club and are keen to welcome new members of all ages and ability levels. We have 3 all-weather carpet courts (with floodlights) and play in the South Bedfordshire leagues in both Summer and Winter. Tournaments and Coaching are also available for all levels. Come along and try us out — we have social tennis sessions for adults on Tuesday evenings from 7pm and on Sunday morning from 10am. Tennis balls, refreshments and floodlights are provided. Just bring your racquet!

For membership details contact Geoff Betts on 01525 634240 or email [tennis\\_club@hotmail.com](mailto:tennis_club@hotmail.com)

You can also visit our website at [www.toddingtontennisclub.co.uk](http://www.toddingtontennisclub.co.uk)

## Toddington Mowers

### Professional and Domestic Garden Machinery Servicing

Shears Hedge Cutters Strimmers  
Mowers (Petrol and Electric)  
Rotorvators Ride on Mowers  
Any other Garden Equipment



*Free* local collection and delivery  
Concessions for OAPs

**07949 178971 (mobile)**

Friendly and efficient service

Bob Williamson

Double Arches Farm, Heath and Reach,  
c/o Garden Machinery Services  
Email: [todbob1@hotmail.co.uk](mailto:todbob1@hotmail.co.uk)

## ***STUART DREW ELECTRICAL SERVICES***

**\*\*Part P Certified\*\* \*\*Member of the ECA\*\***

From extra lights & sockets to rewires.  
For a professional, courteous service with  
free estimates and all work guaranteed,  
please call me.

**Fully Qualified & Insured  
Over 30 Years Experience**

**29 Lincoln Way  
Harlington  
Beds.  
LU5 6NG**

**Telephone  
01525 875965  
07941 812662**

Caroline and Chris Ross  
welcome you to

## THE PLOUGH INN, Wingfield

16th Century Coaching Inn  
Fullers Brewery

Bookings for food are advisable

Telephone: 01525 873077

Visit [www.theploughinn.com](http://www.theploughinn.com) to view our  
menu

### Opening times

Monday—Saturday  
Noon—3.00 pm,  
5.30 pm—Midnight

Sunday  
Noon—Midnight

### Food served

Monday—Saturday  
Noon—2.00 pm,  
6.00 pm—9.00 pm

Sunday  
Noon—4.00 pm



# Chalgrave IT Solutions Ltd

‘We take the pain out of IT’

- ◆ New computer sales and installation, including accessories
- ◆ Computer maintenance and repair including upgrades and virus removal
- ◆ Broadband, network, router setup and support
- ◆ Our new ‘Chalgrave Total Care’ service provides a complete 24/7 software update solution giving you peace of mind, knowing that all your programs are up to date

Our staff are Microsoft certified, ensuring quality expertise you can trust  
Friendly efficient service with special rates for Chalgrave Parish customers  
If you need help please call Mike for a no obligation discussion on:

**01525 213126 / 07900 253262**

**Email:** [pchelp@chalgrave.it](mailto:pchelp@chalgrave.it) / **Website:** [www.chalgrave.it](http://www.chalgrave.it)



www.tomclinic.com

25 Church Square,  
Toddington, LU5 6AA  
Entrance on Park Road

Tel: 01525 875 474

**Osteopathy**

**Cranial Osteopathy**

**Naturopathy**

**Pregnancy Massage**

**Sports Massage**

Arthritic and Rheumatic Pain

Back Ache, Back Pain, Sciatica and Nerve Pain

Neck Pain, Headaches and Migraine prevention

Frozen Shoulder, Tennis Elbow and General joint pains

Circulatory problems, Cramps, Inability to relax and Muscle Spasms

Digestion problems

Fibromyalgia and Chronic Pain Syndromes

Sports Injuries

Pregnancy Care

**Free** ½ hour checks for **babies & toddlers** up to 3 years old

**Appointments: Monday-Friday 8am-10pm and Saturday 9am-6pm**



PPP HEALTHCARE

# Chalgrave Memorial Hall

## Fees and Charges effective from 1<sup>st</sup> December 2015

Period	Parish Resident Individual and Parish Voluntary Community Groups	**Non-Parish Resident or Parish Commercial	**Non-Parish Organisation/ Commercial
<b>MONDAY TO FRIDAY</b>			
9am – 6pm	£6.50 per hour	£14 per hour	£17 per hour
6pm – 11pm*	£6.50 per hour	£17 per hour	£23 per hour
<b>FRIDAY</b>			
6pm – 12 midnight*	£105	£220	£250
<b>SATURDAY</b>			
9am – 6pm	£7.50 per hour	£19 per hour	£21 per hour
6pm – 12 midnight*	£105	£245	£300
12.30pm – 12 midnight*	£130	£300	£350
<b>SUNDAY</b>			
10am – 10pm*	£7.50 per hour	£19 per hour	£24 per hour
<b>'WEEKEND RATE'</b>			
(Friday 6pm to Sunday 12 noon) NB Hall must be vacated at 11pm Friday and 12 midnight Saturday	£235	£500	£600

*\*NB. Hall must be vacated and locked up by this time.*

- Bank Holidays/New Year's Eve – Rates on application
- Committee Room available for hire separately when Hall not hired – Rates on application
- \*\*Block/Regular booking discount of up to 15% available
- Bookings outside above hours subject to individual rates on application.
- Non-refundable deposit of 50% of the booking fee payable to confirm booking.
- £250 damage deposit required on all bookings – refundable in full subject to no damage caused to Hall, contents, equipment or grounds and the Hall and grounds being left in a clean and tidy state. NB: should the cost of reparation to the Hall contents or equipment exceed the deposit then the Committee reserve the right to pursue the balance.

**FOR BOOKINGS PLEASE  
TELEPHONE:  
07831 482556**

# Useful Contacts

<b>Chalgrave News Editorial</b>	Roger Parker	thechalgravenews@live.co.uk	01525 874910
<b>Chalgrave News Advertising</b>	Su Parker	thechalgravenews@live.co.uk	01525 873963
<b>Police Community Support Officer</b>	PCSO Hannah Retallack	LPT.LeightonBuzzardLinslade&Rural@bedfordshire.pnn.police.uk	01582 473411
<b>Member of Parliament</b>	Andrew Selous	andrew.selous.mp@parliament.uk	0207 2191741
<b>Secretary to Andrew Selous</b>	Sue Howats	howats@parliament.uk	01582 662821
<b>Ward Councillor</b>	Mark Versallion	mark.versallion@centralbedfordshire.gov.uk	0300 3008555
<b>Chairman of Parish Council</b>	Phil Parry		07831 605600
<b>Vice Chairman of Parish Council</b>	Ken Green		01525 874107
<b>Parish Council Clerk</b>	Lesley Smith	chalgravepc@btinternet.com	01525 874716
<b>Councillor</b>	Daniel Osborn		01525 873920
<b>Councillor</b>	Debbie Hampson		01525 877149
<b>Councillor</b>	Paul Whitton		01525 877181
<b>Councillor and Traffic Calming</b>	Mike Wells	mikewells@clara.co.uk	01525 877098
<b>Councillor</b>	Barbara Jackson		01525 877617
<b>Central Beds Unitary Council</b>			0300 300 8000
<b>Rector of Chalgrave Church</b>	Rev Anne Crawford	www.chalgravechurch.org.uk	01525 872298
<b>Church Secretary</b>	Bev		01525 210161
<b>Church Flowers</b>	Lesley Colella		07905 241076
<b>Chairman, Chalgrave Memorial Hall</b>	Roger Masters		01525 873039
<b>Hall Booking Secretary</b>	Velda Cooke		07831 482556
<b>Senior Citizens Committee</b>	Roger Masters		01525 873039
<b>West Charity</b>	Lesley Smith	www.chalgrave.org	01525 874716
<b>Chalgrave Sports/Cricket Club</b>	Mike Wells		01525 877098
<b>Book Club</b>	Noeleen Thomson		01525 872168
<b>Beavers/Cubs/Scouts</b>	David Yirrell		01525 875410
<b>Rainbows/Brownies/Guides</b>	Janet Hornsby		01525 875203
<b>Toddington Medical Centre</b>		www.toddingtondoctors.co.uk	01525 872222
<b>Toddington Library</b>			01525 873626
<b>Electricity Board (Emergency)</b>			0800 7838838
<b>Water Board (Emergency)</b>			0845 7145145
<b>Head: St Georges Lower School</b>	Jane Spencer		01525 872360
<b>Head: Parkfields Middle School</b>	David Brandon Bravo		01525 872555
<b>Head: Harlington Upper School</b>	Shawn Fell		01525 755100
<b>Toddington Childcare</b>		Playgroup/am & pm school clubs	01525 875400
<b>Toddington Area Helping Hands</b>		voluntaryworks.org/organisation/toddington-area-helping-hands	07882 988270

## Hallworth Farm

Robert Flitton, who lives at Hallworth Farm in Hill Close with his wife, Kate, has uncovered a fascinating story concerning his home. The couple moved into the farmhouse in 2010, after undertaking a two-year renovation project, something which was right up Rob's street as he works in the building industry. As a sideline, Rob also has an interest in the past so naturally he began tracing the history of Hallworth Farm. The building is old, and dates back to the 19<sup>th</sup> century, but imagine his surprise to discover that he was now living in the very same house where his maternal grandfather, Thomas Gurney, had been born in 1898 and which had been outside his family's possession for more than a century.

Let's step back to 1851 when *another* Thomas Gurney, Rob's great, great grandfather and a native of Stanbridge, married Mary Cooper in Tilsworth. After a spell living in Totternhoe and running a grocery shop, in the 1860s the couple moved to Wingfield. In the 1871 census they were to be found living at Hall Farm, which is believed to be a former name for Hallworth Farm. Thomas was now a farmer and Mary was recorded as being a farmer's wife. With them were four of their children, with ages ranging from 6 to 19 years. Amongst these children was Rob's great grandfather, Edward Cooper Gurney, his middle name derived from his mother's maiden name, which was a common practice in those days.

Thomas Gurney did well and by the time of the 1881 census he was listed as farming 72 acres and employing two men and a boy.

Edward, now aged 15, was still living at home and was described as being a farmer's son. Mary, Thomas's wife, died in 1884, and three years later Thomas married widow Pleasance Rhodes in Paddington, London. Thomas brought his bride back to Hallworth Farm and the 1891 census confirms that he continued to earn his living as a farmer. His son, Edward, aged 25, was an agricultural labourer and living close by with his wife, Lizzie (née Stanbridge) and two children.

Thomas retired from being a farmer sometime in the 1890s and it would seem that he moved out of Hallworth Farm and Edward, his son, moved in. By the time of the 1901 census, Edward had progressed from being a labourer to a farmer in his own right, and was marked down as being an employer. Edward and Lizzie continued living at Hallworth Farm and had nine children, most of these being born at the farm, including Thomas, Rob's grandfather. In 1902 Hallworth Farm was put up for auction and around 1905 Edward and Lizzie moved from Wingfield to Tilsworth, ending



Lizzie Gurney, née Stanbridge (1866  
–1953), pictured in 1952

the family's first association with Hallworth Farm. However, Edward did continue working as a farmer.

Rob's grandfather, Thomas, married Clara Thorne and one of their children was Joan Gurney, Rob's mother. She married Terence Flitton in 1951 and a few years later gave birth to Rob. He, of course, acquired the Flitton surname. Little did Rob Flitton know, when he purchased Hallworth Farm in 2008, that he was returning to his ancestral home.

The coincidences don't stop there because Rob's research has also discovered that he has connections with Hill Farm, at the bottom of Hill Close, and now the home of Roger and Jill Fenwick. Rob found that he was related to the Whinnett family who had lived at Hill Farm. James Whinnett, born in 1837, had married Caroline Cooper Gurney (a sister of Edward Cooper Gurney) in 1887.

What's more, Rob and his brother Fred still farm at a property in Eaton Bray that their grandfather, Thomas Gurney, had purchased in 1927.

A recent project taken on by Rob and Kate has been to refurbish an old barn at Hallworth Farm, a building that was certainly there when Rob's grandfather lived at the farm. It has been beautifully converted into three self-contained cottages that are available for short-term rental. Visit [hallworthfarm.co.uk](http://hallworthfarm.co.uk) for more information.

*RP, with information and photos kindly provided by Robert Flitton*



**Edward Cooper Gurney (1865–1934)**

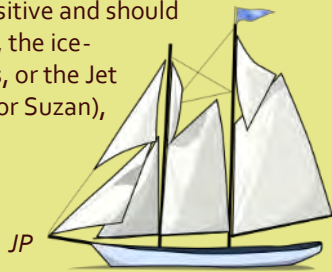


## A Drop in the Ocean!

A great meeting by the 'let's sort the Tebworth Pond out Committee' the other day! Some great ideas, I particularly liked the weekly ice cream van visit, deckchairs, the interest from the local model boat club and the intention to build an, admittedly small, car park for visitors! All very positive and should attract a good crowd in the summer months! In the winter, the ice-skating will do well! Wasn't so sure about the rowing boats, or the Jet Skis.... unless they are for midgets (good for Suzan), in which case we can show that Tebworth embraces diversity???



All very 21<sup>st</sup> century!



## Audacious Theft from Church

In the early morning of 4<sup>th</sup> December thieves were disturbed in the process of stealing lead from the roof of Chalgrave Church. Three men ran off across the fields, leaving behind about half the lead they'd

stripped off – the rest had already been taken away in a van. The metal was removed from much of the south aisle of the church, causing immense harm to this Grade I listed building. On hearing of the theft, Cllr Phil Parry, Bob Ellis and a group of local farmers, including Cllr Paul Whitton, Callum Angel, Sam Edmonds and Robert Upchurch, rushed to the church to render assistance. This included moving the lead that had been left lying on the ground to a place of safety in case the thieves planned to return to collect it. Temporary repairs were also made to provide some protection to the church's precious wall paintings from rain.

Initially, it was thought that the damage would render the church unusable over the Christmas period but, thanks to the efforts of many, it was possible to hold Midnight Mass there on Christmas Eve, the church being packed to near





capacity with worshippers displaying solidarity.

The repairs will be costly, and are not fully covered by insurance – nonetheless, the community has pulled together and enough money has been raised to put right the senseless destruction.

By her own efforts, bride-to-be, Rosie Cooper, managed to

raise £1,042 through a crowdfunding page on JustGiving. While Caroline and Chris Ross at The Plough handed over a cheque for £750, this being the proceeds from the fortnightly quizzes held in the pub during 2015.

Well done to all those who provided assistance or raised money!

A little while before the *News* went to press, it was announced that the police had charged a man with theft.



*RP, with photos by Phil Parry, Anne Crawford, and RP*

## **Were you Truly Wafted here from Paradise? No, Luton Airport!**

I notice that Luton Airport now charges £2.50 to drop off passengers, well that's very reasonable of them. Who exactly monitors this? Not long ago it was £1, then £1.50 and so on. By my calculations, in 2020 it will be £25!

This raises a fortune and borders on extortion! You can't stop anywhere else... as there is a Robber in a van who will fine you for even nearly coming to a halt within a mile of the terminal which you will because, and I have mentioned this before, the road goes to a single lane for the last half a mile and therefore ceases to move! Luton Airport do inform you that you can park for a short time in the Mid Term Car Park and get a free bus in to the terminal... That will be the bus that pulls into the traffic and queues with the rest of us then, will it?!!!

*JP*

Derek Armshaw/Flickr



## Lost in Translation

In the dim and distant past I worked in a practice that provided veterinary services to the local stately home. The practice senior partner usually looked after this rather aristocratic establishment. Therefore I was somewhat short of “local knowledge” when I received an emergency call to the estate one November afternoon. This incident pre-dated the advent of the mobile phone so communication with the practice manager was via the rather unreliable two-way radios fitted to our cars. Reception was poor and patchy but I worked out that I was expected to visit the estate as soon as possible to attend a dog that had been attacked by a fox. I happened to be nearby so drove through the grand entrance within a few minutes. A well dressed man who looked and acted like a butler flagged me down. He directed me along a lane telling me that there was a chain of people who would show me the way to the dog. Very efficient!! At each junction I was met by someone who pointed me in the correct direction. Eventually I was sent across a large area of parkland and, in the gathering gloom, the lights of four or five vehicles all pointed inwards acting as a beacon for me. There was a group of a dozen people in a huddle, and as I pulled up and got out of the car all eyes were on me. The huddle parted like the Red Sea as I drew near revealing a Jack Russell terrier in the arms of a middle aged blond lady. She was crying loudly. I gently lifted the dog from her arms and started to examine him. The little dog had a variety of superficial bite wounds that would require a clean up and suturing at the surgery. Apart from the wounds he was going to be fine. One of the crowd asked me if the dog was going to be OK. I felt it best to erase the air of panic and despair in the group, so in a loud voice I declared that Patch was in grave danger of survival. Middle-aged blond lady screamed and started wailing at 110 decibels. One of the estate workers said to her “No, Mrs Nicky, he is going to be fine, the vet is joking”. Mrs Nicky started to get very angry, she had only heard Grave Danger and hadn’t seen any humour. It dawned on me that she was the wife of the estate owner, a duchess and judging by her accent not English. Using my best schoolboy French I attempted to dig myself out of the hole I was in. This seemed to make matters worse. The Duchess was Swiss and, in my opinion, supported the view that there is a national lack of sense of humour amongst the Swiss.

An awkward truce was made, I set off to the practice with Patch to stitch him up. I was met by one of my bosses, a phone call from the Duke had preceded my arrival! I explained my jocular approach and that my intention had been simply to make light of the situation as the dog really wasn’t in danger. The humour vacuum had expanded!! A severe ticking off ensued, my boss ending by quoting Attila the Hun. “Know your enemy”. Good advice!

*Peter Harding*

### Warning!

If you receive an email offering processed pork, gelatin and salt in a can, don't open it – it's just spam.



## Chalgrave Memorial Hall

Just to remind everyone that the Hall is here for the benefit of all residents of the Parish and as such we ensure the rate charged to individuals, charities and organisations in the Parish is heavily subsidised. You will find a copy of the fees and charges in the Hall, in the *Chalgrave News* and on any of the notice boards around the Parish. Alternatively, they can be obtained from any of the Hall Trustees.

Currently the Hall is well used. Apart from weekend hires for weddings, parties, various fund raising events and conferences, the Hall is also used regularly by the Parish Council, the Chalgrave WI, the MacIntyre Charity and Central Bedfordshire Council for local and national elections.

Those of you who have visited the Hall lately will have noticed that a new boiler has been installed. This together with an upgrade to the kitchen and two new fire doors are the result of a successful lottery bid last year of £9,500.

Last year, the Hall Committee lost the services of Barbara Jackson. I am sure the Parish will join me in thanking her for the voluntary work she has put in over the years towards the running of the Hall. I am pleased, however, to report that we have been able to recruit John Wojdyla, Gary Burgess and Hazel Zimmer from Tebworth who will, I know, bring a lot of fresh impetus and enthusiasm to the Trustees.

Unfortunately, we continue to experience some minor acts of vandalism to the Hall and play area. I would remind everyone that whilst the Memorial Hall and grounds are there predominantly for the benefit of the parishioners of Chalgrave, they are not a public area, but are managed and run by the Trustees (Committee) of the Hall. We do however love to see their use by children so long as the play equipment and Hall are all treated with due respect.



*Finally, and very importantly, the world famous **CHALGRAVE GAMES** will be held on **SATURDAY, 25<sup>TH</sup> JUNE** and the theme this year will be **PANTOMIMES**. Fancy dress is not compulsory but we hope that as many as possible will take the opportunity to dress up. As usual there will be plenty of interesting events for adults and children, live music, BBQ and beer tent.*

We are of course always looking for helpers or sponsors so if you can help out please let me or any of the Trustees know.

**In the meantime, please keep 25<sup>th</sup> June free in your diaries.**



*Roger Masters, Chairman*



# Carol Singing in The Plough



It has become a tradition in the run-up to Christmas for the choir of All Saints Church, Houghton Regis, to

visit The Plough for an evening of carol singing, and last December was no exception. The occasion took place on the 10<sup>th</sup> and the choir, sporting a strong team, was led by Janet Steele, with her husband, Nigel, playing the

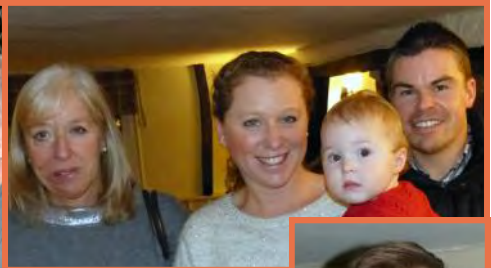


keyboard. A good crowd came along to enjoy the evening and

join in the singing, including a group of supporters from the church.

To get everyone in the Christmas spirit, Chris and





Caroline laid on plates of delicious mince pies accompanied by

mulled wine. In keeping with previous years, the Wright family turned up in their Christmassy attire, with Ken Wright stealing the show with his Coca-Cola-themed T-shirt, although his alluring pose didn't meet with universal approval.



A collection was held

which raised more than £60 – this goes a little way towards meeting the target of £18,000 needed to refurbish the organ in All Saints.

RP



## Old News

*Luton Times and Advertiser*, 2<sup>nd</sup> September 1898 –

### TEBWORTH

EXTRAORDINARY FALL OF A CHILD WALKING IN ITS SLEEP.— Immunity from injury in appalling circumstances during infancy may, it is hoped, auger well for the future. On Thursday last week, about half-past 11 p.m., Mrs Harris, of the Cock Inn, put a little girl of hers, 7 years of age, to bed in an upper room; but her consternation can be imagined when shortly after she was told that the poor little thing had fallen out of the window. Marvellous to relate, save for a few slight bruises, no harm had resulted, notwithstanding that the child had dropped no less than 20 feet before reaching the ground. Dr. Waugh, of Toddington, was called in, but could find no apparent hurt whatever. We can only trust that the somnolent acrobat continues to enjoy a charmed life, possessing the happy faculty always to fall on her feet.



enthusiasm, by both young and old. Indeed, in Wingfield, as the photographs below confirm, riot control barriers had to be erected to safeguard Santa from over-excited onlookers who should have known better.

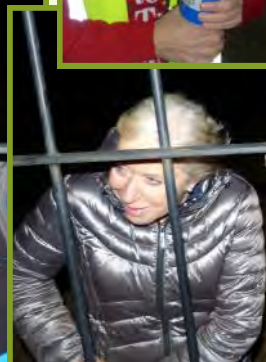


**Santa Run**  
 Santa chose the evening of Sunday, 19<sup>th</sup> December, for his annual pre-Christmas tour of Chalgrave. So that his reindeer could get some sleep ahead of the Big Night, the Rotary Club of Flitwick Vale had kindly provided Santa with motorised transport. Regrettably, this only provided enough room for Santa

himself so his army of little elves, with their collecting tins, had no option but to traipse alongside. Luckily, the weather was unseasonably mild, so, unlike most years, on this occasion none of them suffered frostbite nor did any of them become drenched to the skin.

The tour started with the customary visit to Milton Bryan before making its way to Tebworth and finally to Wingfield. Everywhere Santa was greeted with great

Lugging around heavy collecting tins was exhausting work for the elves, so it was with relief that a well-earned rest was to be





had at Park Farm in Tebworth where Sheila Osborn had laid on delectable mulled wine, sausage rolls and mince pies. Suitably revived, the helpers



continued on to Woodlands, also

in Tebworth, where



another sumptuous feast of mulled wine and sausage rolls awaited them courtesy of the Keeches, with John having met his dependably high standards.



The evening finished with an

exquisite Malaysian chicken curry made by Phil Parry –

readers who think that the elves would have been defeated by such a feast after scoffing so many sausage rolls fail to appreciate that an army marches on its stomach and this army of elves was no exception.



Santa's whirlwind tour was enjoyed by all and the generosity of everyone encountered was magnificent with the astounding sum of £561.44 being donated. Half of this money goes to the



Rotary Club and the other half helps to pay for the Christmas lunch for senior citizens from Chalgrave.

Thanks go to everyone who contributed to the collection and to those who provided nourishment – they made the evening much fun for Santa and his elves.



RP

# The Fourth Chalgrave Beer Festival

It had been more than a year since a beer festival was organised by the *Friends of the Queen's Head* so what better way of spreading happiness during a dismal January than by holding another. So it was that on Saturday, 23<sup>rd</sup> January, the Memorial Hall was once more home to casks of real ale. Five varieties were on sale, including the familiar and ever popular *Doom Bar* from Sharp's Brewery in Rock, Cornwall, and Timothy Taylor's *Landlord* made in Keighley, West Yorkshire. These were joined by *Deuchars* IPA from the Caledonian Brewing Company in Edinburgh, and a limited edition beer, *Done Deal*, produced by Molson Coors in Burton-upon-Trent to celebrate the football transfer season. As if these four didn't cover a wide enough geographic area, the *Friends* had also sourced a beer, *Northern Light*, all the way from the Orkney Brewery at Quoyloo in the Orkney Islands, 670 miles from Tebworth by road and ferry. The *Friends* clearly spend months endlessly touring the length and breadth of the British Isles in their unremitting efforts to find beers for our delectation – no wonder they always look so exhausted.

Complementing the beers was the perennial favourite, *Old Rosie* cider, without which no beer festival would be complete. And, naturally, to soak up the beer and cider there was also an







excellent range of home-cooked food including the now famous, and always cherished, bacon-based badgers which have become a regular feature of the Chalgrave beer festivals. If food and drink weren't enough, there was also live music to keep the patrons entertained – including the ukulele band, Uke 66, with our postman Mark as one of the key players.

The proceeds from the festival will help the *Friends* try to keep the Queen's Head open and to secure its future.

*RP (with additional photos from Su Parker and Lyndie Lothian)*







# The World's Biggest Pub Quiz

On Sunday, 7<sup>th</sup> February, The Plough was one of 1,457 pubs that simultaneously took part in a quiz that hoped to break the Guinness World Record for the largest multi-



venue quiz, whilst at the same time raising money for good causes. The event was organised by PubAid, supported by JustGiving. Not unexpectedly, the pub was crammed full for the occasion and landlady Caroline Ross did an admirable job as the quizmistress, while husband Chris mingled with the contestants, giving



clues to possible answers, sometimes even to the right answers.

A very entertaining and fun evening resulted in The Plough raising a commendable £101 for the NSPCC.

At the time of going to print, the organiser's website ([worldsbiggestquiz.pubaid.com](http://worldsbiggestquiz.pubaid.com)) reported that 1,014 of the 1,457 pubs had declared and, between them, they'd raised £125,045 with 26,483 contestants participating. It's not yet known if the world record has been beaten.

RP

**PS. Did you know that pubs raise a staggering £100m every year for charity?**



## Pickwick Capers



Astonishingly since the last issue it has been all quiet on the porcine front in Wingfield and there are no tales to recount, although I hesitate to tempt fate as even after all this time my heart still skips a beat whenever there is a knock on the front door. Could it be that The Beast has mellowed?! Time will tell....

In the meantime, in case there are any readers who actually look forward to their quarterly dose of 'hogwash', I can reveal that remarkably there lives in South London a pig lady who, if anything, is even battier than Yours Truly, not least because this is the second pet pig that she has taken on!! Having been introduced to each other via a mutual friend, we have exchanged several pig related anecdotes and I thought that readers might perhaps be entertained by the antics of an urban pig.

Pickwick, other than when the vet pays a visit, appears to be an altogether more benign individual than our resident swine. Being a London dweller, he might not have the same amount of space to roam around in, but other than that he is considerably more indulged. The side passage adjoining the house has been converted into his bedroom, which, while resembling a larger version of Chops's porch, has the added luxury of being heated. He is occasionally transported for a country break in a custom made cage in the back of the car, possibly soon to be replaced by a small van with an electric lift on the back in order to accommodate him! His owner gives violin lessons at home, and her pupils have on occasion been both surprised and delighted to see a most unusual spectator, up on his hind trotters, peering through the window at them!

On one occasion Pickwick was asleep in the kitchen whilst his owner had gone to do something in another room. All of a sudden she heard a terrible crash, and rushed in to find that he had opened the oven and pulled out the roasting pan. There he was, with a huge joint of beef in his mouth like some enormous cigar, charging around the kitchen wondering what he was going to do with this incredible 'find'. Pleased as punch with himself, he was determined not to give it up without one hell of a fight and they ended up running round the garden as if in a comedy chase scene until eventually she threw copious quantities of pig nuts all around him, diverting him sufficiently so that he dropped the joint in order to eat the nuts. Quickly grabbing the beef, which by this time had been rolled in soil and had tooth marks all over one end, she triumphantly went inside to repair the damage. Having washed off all the soil and cut away the obvious tooth marks, she put it back in the oven and served it up to her partner for Sunday lunch! Two days later she confessed all – fortunately her partner laughed heartily and said he would have done exactly the same!

One thing is for certain, Chops would never have been lured by pig nuts into relinquishing such a trophy and the household would have gone hungry that

lunchtime, just as a doubtless furious anonymous household did one Sunday when my mother was young and her dogs arrived home carrying somebody's perfectly cooked joint of beef.....evidently unruly animals must run in the family.....

Happy Easter to All from Chops and Pickwick ..... keep a watchful eye on your Easter

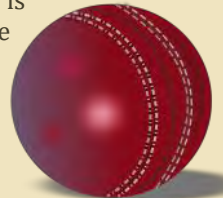
Sunday roast, you never know whether a thief might be lurking!!



*Julia Marsh*

## Chalgrave Sports Club

The winter is a quiet time for the Sports Club and our main activity is rebuilding the Clubhouse. As you will know we have dismantled the old clubhouse and cleared the area so we are now waiting for a dry spell to lay the concrete base. Once that is set we can then construct the new building. We are very grateful for the help with this project from many people but particularly Anne and Roger Costin, Roger Fenwick and Rob Flitton. When the build is complete we will have a grand opening of the clubhouse – watch out for details.



A Plough Inn Golf Society (PIGS) golf day at Chalgrave Manor Golf Club took place between Christmas and New Year which was very enjoyable. The day itself was bright and clear and, despite the difficult conditions underfoot, the quality of golf was good. Well done to all of the prize winners. That evening we finished the day with a lovely meal at The Plough, with other members of the club joining us, and our thanks go to Chris, Caroline, Marc and all the staff. And a very special thanks to Paul Levy who organised the day on our behalf. We are intending to hold another three golf days throughout 2016 – please keep an eye on the website and the *Chalgrave News* for details.



We are in the process of planning our cricket fixture list for the 2016 season and are anticipating ten matches plus our 10/10 Festival of Cricket.

If you are interested in playing cricket or joining us for a round of golf please contact me or any of the committee.

*Phil Parry, Chairman*  
[chairman@chalgravesportsclub.co.uk](mailto:chairman@chalgravesportsclub.co.uk)

# The Plough



Hi All,

Well, Happy New Year and all that – it seems a long time ago now that Christmas and New Year were descending upon us at a fast pace but we have survived and, hopefully, we gave our customers a good one.

The Plough has been very lucky to be able to have raised charity funds through our fortnightly quiz and raffles,

carols, etc, for Air Ambulance, Foodbank, Chalgrave Church and All Saints Church, Houghton Regis.

This February saw us attempt to gain a place in the Guinness Book of Records for the biggest pub quiz. We raised £101.00 for the NSPCC so a big thank you to our quizzers.

Some of you may recall that due to high winds in November our signpost met an untimely end (luckily landing on our lawn). Now we are pleased to say a mighty erection (of the sign) has been completed by Fullers.

Do look out for our chef Marc's profile in the 10<sup>th</sup> anniversary edition of the Chiltern Food and Drink Guide (ribbing of him is essential).

Chris and I hope you all enjoy the coming of spring — drier weather so you can walk the dogs and come and enjoy our garden, and longer warmer days when you can enjoy a bite and a pint. There is also an evening of clairvoyance with Denise Newman on Sunday, March 20<sup>th</sup>, for which booking is essential.

Wishing you all Happy Mother's Day, Easter and all the other things in between now and the next issue!



The new sign



Visit us on Facebook – search Facebook for *Plough Inn Wingfield*

*Caroline (and Chris)*  
01525 873077

[www.theploughinn.com](http://www.theploughinn.com)

Having consulted our authoritative sources, the News team can scotch rumours that Andrew Lloyd-Webber was intending to adapt his successful production of "The Sound of Music" to feature Kim Jong-un prancing about in the mountains north of Pyongyang. And he most certainly wasn't going to rename the show "How do you solve a problem like Korea"!

# Queen's Head

Hello everyone, it seems ages since I wrote a piece for our smashing community magazine, but I am starting to misplace my marbles a bit. What's that, I hear you say – I lost them years ago? Well, maybe you're right, I can't remember.



Some of you may have heard that I have had a bit of a health scare recently, well it's true, but I am still soldiering on with the help of some fabulous friends who are rallying round and doing more than their fair share of the work entailed in running a pub and to all of them I extend my sincere gratitude.

Due to my illness the Pub had to close for a short period but that is now sorted out and we are open every evening 7.00 pm until 10.30 pm Mondays and Tuesdays and 6.30 pm until 11.00 pm the rest of the week and Saturday and Sunday lunchtimes. You may have noticed I do close a bit earlier than I used to because I get a bit weary late at night, but you will still get a warm welcome whenever you visit your little local hostelry.

I am pleased to say that our live music nights are still going strong, every fourth Wednesday is for all of you with any form of musical prowess to come along and enjoy a folksy type of evening and join in if you wish, and Fridays are where the local pros come to entertain you. Keep watching the blackboards for further info.

Well summer is nearly upon us so it's time to dust down those barbies and prepare for some sultry summer evenings basking in the garden with the captivating aromas of freshly cut grass and lavender wafting over the parish, that is if the Council can sort out the drains in time!!

I hear there is going to be another one of those superb street parties again this year to celebrate Her Majesty the Queen's 90<sup>th</sup> birthday – what a great idea! A perfect opportunity to meet your neighbours in jolly and convivial surroundings and of course I hope the pub will be open to enable me to meet all those of you who find it difficult to get to the pub during the working week.

That's nearly all for now, but I must thank some more people before I sign off – they are my two sons, Mark and Gareth, who, despite trying to disown me for the majority of their lives, have rallied round and given time and effort to make sure that I am safe and to keep the pub running – thanks lads.

And finally Ron Harris, who after seeing me lying on the floor unable to move, and despite him being in a wheelchair, managed to get round the back of the pub and walk/crawl through the pub to get to me and then call the ambulance – my hero!

That's it, until next time keep safe. All the best, *Colin*

**Why not check out our Facebook page—search for  
*Queens Head Tebworth* on Facebook.**



## You've Got It ... I Want It!!!

While I was on holiday at Christmas I received a phone call to inform me that one of my staff had been held at knifepoint and the car he was demonstrating had been stolen. It was not a Ferrari or a Porsche but a 10 Grand Audi.... Neither the car, nor the perpetrator, was seen again!

There have been many reports lately of people's houses being broken into and their car



**Ram raid at Santander, Leighton Buzzard, 15 Feb 16.  
The thieves fled empty-handed**

keys, and subsequently their cars stolen (once in Tebworth I might add!). Not only that, people's dogs are taken on a regular basis and only recently, some low life drove a JCB into Santander Bank in Leighton Buzzard and tried to steal the cash machine and in the process also destroyed the wall of the coffee shop, Oliver Hare, opposite it. So, not only one national business out of action but also a local one for the foreseeable future. I sometimes despair that these people whose lives are

obviously pointless, see no problem in ruining others, and, if they get caught, the penalties are usually laughable. We have a court system that favours the guilty and a police force that is so under-manned that it is a laughing stock. We have hordes of people in Calais who can't wait to get here and feast on our benefits system, why else would they march through Europe heading for the Nirvana which is the UK? Not bothered about staying in France I observe! No-one ever asks the question as to where we are going to put them all... Harpenden I said! Still, everything will be fine because the Prime Minister is travelling around Europe trying to find a way of keeping us in the EU, when quite frankly, most people want out!

Are we missing the point? Probably, but the lunatics are running the asylum folks and nothing looks like it's going to change soon!!! Still on a brighter note, Spring is coming!!!

*JP*

## Did you know? ...

- As light travels faster than sound, some people appear bright until you hear them speak.
- Knowledge is knowing a tomato is a fruit. Wisdom is not putting it in a fruit salad.



# All Our Yesterdays – No. 23

From the previous AOY you can see that plans were being made for the Hall before the end of the war and the land was purchased in September 1944. It was finally opened on 4<sup>th</sup> June 1949. Most meetings were in the Wesleyan Hall. This excerpt comes from the meeting at the Memorial Hall on 30<sup>th</sup> June 1948 and lists the first rental rates. The minute book, written in long hand, is difficult to read. It is available to anyone who wishes to borrow it.

Any comments or questions to Ken Green, 874107 or [kenandlyn@tinyworld.co.uk](mailto:kenandlyn@tinyworld.co.uk).

## CHAIRGRAVE MEMORIAL HALL

The following rules and charges are laid down for the use of the Hall  
These charges will be reviewed at the end of six months

### (a) For Village Residents and Organisations

Evening Dances, Whist Drives, Wedding Receptions and similar functions	25/-	For use of the Hall
	42/-	For use of sound equipment

### (b) For Non Residents

Evening Dances, Whist Drives, Wedding Receptions and similar functions	30/-	For use of Hall
	42/-	For use of sound equipment

A deposit of 10/- will be required for hire of the Hall. This deposit will not be returnable in the event of cancellation of hire. The committee do not hold themselves responsible for failure of sound or other equipment. The sound equipment will at all times be in charge of a member of the Village Hall Committee

(c) Special rates will be available for Village requirements at the discretion of the committee

A sum of 5/- will be charged for meetings to cover the cost of heating, lighting and cleaning by caretaker

ALL BREAKAGES MUST BE REPLACED OR PAID FOR

# Chalgrave Games 2016

## CHALGRAVE MEMORIAL HALL

### This year's Chalgrave Games will be on Saturday, 25<sup>th</sup> June 2016

As usual there will be lots of fun and games for the children of the parish (and beyond) alongside a huge variety of stalls and events for all ages to enjoy.

For the mums and dads there will be games for grown ups as well as the bar and barbeque for refreshments after all that activity.

So, put the date in your diary and come along and enjoy a day out with your friends and neighbours.

**Saturday 25<sup>th</sup> June 2016**

**SAVE THE DAY!!!!**



## Street Party

The details have still to be finalised but it is planned to hold a Street Party in Tebworth on the afternoon of Saturday, 14<sup>th</sup> May, to celebrate the 90<sup>th</sup> anniversary of the birth of HM The Queen.

Watch out for more details to be announced in due course!



**Saturday, 16<sup>th</sup> April 2016**

Chalgrave Memorial Hall, Tebworth

# **Chalgrave News Annual Quiz**

**1st prize, £100**

**2nd prize, bubbly!**

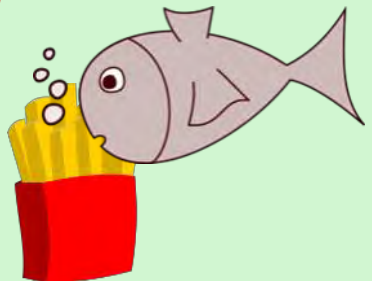
**6.30 pm for a 7.00 pm start**

A fun evening for grown-ups, for teams of up to 8 -  
there will again be no children's rounds this year

**A CASH BAR WILL BE OPEN**

**A FISH 'N' CHIP SUPPER IS INCLUDED IN  
THE TICKET PRICE**

Tickets, £9 each, available from -  
Punch Opticians, Toddington,  
or The Plough, Wingfield,  
or Su on 01525 873963



**Entry by pre-purchased ticket ONLY**

**Sponsored by**



**WRIGHT VEHICLE SOLUTIONS**

Don't forget our special offers on servicing and repairs for local residents.



Call John Parker on the number below.



Collection and delivery available.

## WRIGHT VEHICLE SOLUTIONS

### MOT Centre

- **OVER 80 VEHICLES IN STOCK AT ALL TIMES**
- **FINANCE AVAILABLE**
- **PART EXCHANGE WELCOME**



[www.wvsgroup.com](http://www.wvsgroup.com)

**01908 366668**

Dane Road, Bond Avenue, Bletchley,  
Milton Keynes MK1 1JQ

