

SPRING 18
ISSUE 58

CHALGRAVE NEWS



Celebrating Chalgrave

DATES FOR YOUR DIARY

Day/Date	Event	Location/ Contact	Time
3 rd Tuesday of each month	Parish Council Meeting	Memorial Hall	7.30 pm
Every other Sunday	Quiz Night	The Plough	8.00 pm
Mondays	Dominoes	The Plough	
Weekdays	Book Club	Noeleen Thompson	
2 nd Tuesday monthly	WI	Memorial Hall	8.00–10.00pm
Saturday 12 April	Race Night	Memorial Hall	6.30pm
Saturday 6 May	Beating the Bounds	Meet outside Queen's Head	10.00am Sharp
Saturday 12 May	Chat & Chomp coffee morning	Chalgrave Church	10-12pm
Saturday 19 May	Street Party for The Royal Wedding	The Lane	3.00-8.00pm
Saturday 16 June	Open Gardens	Debbie Parry	1.00pm
Saturday 7 July	Chalgrave Games	Memorial Hall	1.00pm

Deadline for the next edition: 23 June 2018
Please send to: thechalgravenews@gmail.com

The Chalgrave News team produces the Chalgrave News in good faith and we do all we can to ensure that no offence is caused to any individual or organisation. We also reserve the right not to publish articles and contributions submitted to us if they do not comply with our policy.

A message from the editorial team

We hope that by the time you're reading this spring has well and truly sprung and that you all weathered the 'Beast from the East' without mishap. It might have been cold but didn't Chalgrave look lovely?

Once again Chalgrave has a packed calendar of events for the coming months. There will be a street party in May to celebrate the royal wedding, the Chalgrave News is organising another Open Gardens Day in June with more gardens this year and the Chalgrave Games in July will have a 'Swinging Sixties' theme this year. (Check the Dates for your Diary for details of these and other regular Chalgrave events)

We also hope to see the grand re-opening of the Queen's Head and we're all looking forward to seeing the changes that have been made.

You may have been aware of the proposed plans to increase the speed limit to 40mph in part of Tebworth. We're glad to see that these plans have been scrapped and there will now be an advisory 20mph limit in the centre of Tebworth. Well done to everyone who replied to the consultation.

This issue is the fourth for the present editorial team and after a year we'd love to know what you think of the Chalgrave News – what we're getting right or wrong and what you'd like to see included in the coming issues. Please contact us at thechalgravenews@gmail.com.

Lastly a big welcome to new Chalgrave resident **Boe Amelia** at the Grand Chapel.

Let the good times roll.



CHAIRMAN OF THE PARISH COUNCIL

Fly tipping. We are constantly plagued with fly tipping particularly along Tebworth Road. Cllr. Paul Whitton always investigates and will look for evidence of the source of the rubbish. He has recently had success resulting in a fine from CBC for one owner of rubbish - and there are two other cases pending which may end up in court. Always let Paul know if you spot any fly tipping.

Paul and I are going to meet Houghton Regis Town Council to put pressure on CBC to tackle fly tipping more effectively.



Potholes. Our roads have suffered from the recent bad weather. Church Road and Featherbed Lane are in a poor condition. We are constantly emailing CBC about these roads – and other roads in our Parish.

Speed Limit. CBC proposed increasing the speed limit along the Toddington and Hockliffe Roads to 40mph and reducing the speed limit to 20mph around the bends by the Pond and the Queen's Head. Due to the overwhelming opposition to this proposal from the residents in the Parish CBC has now dropped the proposal. The 30 mph will remain and there will be a 20mph limit on the bends. Thank you to all those that contacted CBC with your objection. We have asked CBC if the 20 mph can be imposed down The Lane and along the Wingfield/Tebworth Road. I have been told that this is not possible but I will enquire further. We also got the school buses to pick up children from a safer location on Toddington Road.

Tebworth Great Pond . The issue will be going to Land Registry Mediation and Tribunal.

Speed watch. Under the leadership of Cllr Mike Wells the Speed watch team are out once a month.

New Councillor. Finally we have a new Councillor. Janet Day of Parkview Lane has filled the vacancy caused by Barbara Jackson stepping down. We were heartened by the fact that there were five applications for the vacancy. Many Parish Councils find it difficult to find volunteers and some continue without having a full complement of Councillors. **Phil Parry.**

CHALGRAVE ECO WARRIOR

I walk the lanes and footpaths of Tebworth every day with my dog and I am amazed at the sheer amount of rubbish I encounter. I often come home with my pockets stuffed with plastic bottles and film, drink cans and food wrappers.

I am sure we have all seen the recent campaigns highlighting the dangers of plastics to marine life but rubbish on land can be just as damaging to wildlife, stock and our beloved pets. Only a few weeks ago my beloved Spaniel narrowly avoided cutting his foot to shreds on a torn -beer can which had been shredded into sharp spirals during verge cutting. On the same day I picked up over 20 small, sharp shards of plastic from footpaths. These small pieces of plastic can easily be ingested by livestock and wildlife. At the moment the vegetation is low on the verges and many hedges have been pruned back, so it is the ideal time to identify and collect rubbish. If you are out walking your dog, or just going for a country stroll why not put a collecting bag in your pocket and pick up some of the rubbish you see? If even a few of us in the Parish could commit to this course of action I am sure it would make our local environment a prettier, safer place for all our inhabitants...great and small.

Beth McCausland



BREAKING NEWS

As we go to print more burglaries are being reported in Tebworth. One down The Lane where the door was battered and broken some time between 9pm and 1am but for some reason the burglar gave up just before the door gave way. Were they disturbed? Another near the Village Hall where professional tools were stolen.

As this seems to be an increasing threat the Chalgrave News will investigate in the next issue various methods some of the residents are using to protect our properties. If you have any interesting ideas about this please send us a note to thechalgravenews@gmail.com and we will see if we can include your thoughts and ideas so that they may be helpful to others.



SPRING TIME IN CHALGRAVE

Thank you to Jewels and Daniel Osborne and family for providing such lovely pictures for the Spring edition of The Chalgrave news.



SPOTTED LOCALLY

Spotted at a local shopping centre. Here's someone with a sense of humour. Gives a whole new meaning to the idea of 'going green'!

Actually he runs an astRo turf company so this is great advertising. Must be hard to keep clean though...



THE CHALGRAVE RAMBLER

The rambler has been out this month looking to the skies. The birds are nesting now that spring is here and the rambler couldn't help doing a bit of birding.



Where do you think this was spotted?
Emails to thechalgravenews@gmail.com.

VIEW FROM THE HOUSE

POLICE FUNDING FOR BEDFORDSHIRE

South West Bedfordshire MP Andrew Selous held another debate in the House of Commons on the funding of Bedfordshire Police. The debate was watched by the Chief Constable of Bedfordshire Jon Boutcher who came down to the House of Commons to attend and who spoke to the Police Minister Nick Hurd afterwards. In opening the debate in the House Andrew stated:-



“I am grateful to Mr Speaker for granting me this important debate, and I am honoured to have the chief constable of Bedfordshire present. Keeping the public safe is the highest duty of any Government, which is why I take this issue so seriously. Back in 2004, the concept of “damping” was introduced to the police national funding formula. As a result, Bedfordshire police receive between £3 million and £4 million a year less than the Government’s own funding formula says it should. Bedfordshire police already have one of the smallest budgets of any force in England and Wales, at £102 million, and are in the lowest quartile of all forces for both budget and number of officers per head of the population.

For many years, Bedfordshire police managed to reduce crime on a reducing budget, and I understand, of course, that the Home Office has to play its part in helping the country to live within its means. Back in 2011-12, however, Bedfordshire had 1,264 police officers. It now has 140 fewer—only 1,124. In 2011-12 we had 128 police and community support officers. We now have 53, which is a reduction of 75. In 2011-12, we had 864 members of police staff. We now have 758, a reduction of 106. I hope that the Government will listen to the chief constable, because damping which, as I think the hon. Gentleman would admit, has been happening under Governments of both parties for a long time, starting in 2004, has had a cumulatively serious effect on Bedfordshire police.

Between 1 April 2016 and 31 August 2017, Bedfordshire experienced a 12.2% increase in crime, a 24% increase in the number of calls requiring an immediate response and a 48.9% increase in burglary, compared with the same period in the previous year. In my constituency, in 2013-14 Houghton Regis had an average of 391 crimes per month, which has risen by 13% to 440. In Dunstable an average of 235 crimes a month has risen by 24% to 292, and Leighton Buzzard’s average monthly crime has risen by 57%, from 136 to 214.

VIEW FROM THE HOUSE continued

I am acutely aware of the impact of rural crime, particularly on people in isolated communities. Many years ago, Bedfordshire police officers lived in the villages for which they were responsible, but that is no longer the case. We are also dealing with an unprecedented level of unauthorised Traveller encampments, which further increase the demand on already overstretched police resources. Between 2011-12 and 2017-18, the Bedfordshire police force has already achieved savings of £34.7 million, but Her Majesty's inspectorate of constabulary and fire and rescue services has spoken of "an inability to maintain a preventative...presence across Bedfordshire." In Bedfordshire, 40% of the force's activity takes place in Luton. While there is insufficient police capacity to deal with the challenges in that town, it means that the rest of Bedfordshire has less than its proportionate share of police cover, for which its residents also pay. A small police budget that has suffered from 13 years of damping would be serious enough even without the fact that Bedfordshire faces unusually high levels of serious threats and crime.

Let me spell this out. Bedfordshire has the third highest terror risk in the country, and its police force must deal with the fourth highest level of serious acquisitive crime in England and Wales. It has a higher proportion of domestic abuse offences per head of population than the much larger forces of Greater Manchester, West Midlands, Thames Valley and Hertfordshire, and 40% of all firearms discharges in the eastern region take place in Bedfordshire. The number of reports of missing persons between April and June this year was 350% higher than the number during the same period in the previous year. As a Bedfordshire Member of Parliament, I am not happy that the people of my county do not enjoy the same levels of police protection and response in an emergency as are available to the people of Hertfordshire and Thames Valley. We pay no less tax than they do, so what is fair or right about that? Inality which are not normally dealt with by a force of that size. In one incident of gang-related violent disorder this year, no response resources were available and CID detectives went to the scene with no uniform or protective equipment, and a number of officers were injured as a result. In one incident in Luton recently, a single female officer made three arrests on her own and called for assistance, which took eight minutes to come while she was in danger. At present, each Bedfordshire police officer is expected to investigate 12 to 13 crimes at any one time. The level of stress affecting Bedfordshire police officers is leading to burn-out and psychological and physical illness; that is unacceptable, as we owe them a duty of care Bedfordshire police are not able to respond to all the daily calls seeking a fast response, nor to all the daily incidents requiring a community response.

VIEW FROM THE HOUSE continued

Recently a Leighton Buzzard businessman being threatened by a man wielding a metal bar dialled 999 and officers failed to attend. Bedfordshire police have already achieved £34.7 million of savings between 2011-12 and 2017-18. Bedfordshire also already has one of the most extensive blue-light collaboration programmes in the country, and its tri-force collaboration is improving effectiveness and delivering savings. Some 25% of its resources are already allocated to tri-force and regional collaboration.

Bedfordshire police believe they need a minimum of 300 more officers and 80 more detectives in order to provide an acceptable service. An increase of 300 officers would only be a net increase of 160 officers on the number the county had in 2011-12. In 2001, when I was first elected to this House, I stood on a platform of restoring the 88 police officers that had been lost to Bedfordshire under the previous Government. In 2005, when elected to the House for the second time, I stood on a platform that committed the Government to recruiting an extra 5,000 police officers nationally every year. By holding this debate tonight, I am holding true to the pledges I made to my constituents when they first gave me the honour of serving them in Parliament.

The Minister for Policing and the Fire Service (Mr Nick Hurd) then spoke in reply:- It is a great pleasure to reply to the debate, particularly given the way in which it has been framed by my hon. Friend the Member for South West Bedfordshire (Andrew Selous), who we know to be highly respected in the House for his moderation, his reasonableness, his long-standing passion for fairness and for pressing for reassurance on the resourcing of the police in Bedfordshire. I know from our private conversations that he has now reached a point of extreme frustration. He has had a number of conversations with various Ministers on this subject over many years, and he has been tireless in championing this cause, for reasons that we wholly understand. Let me make three points in response to my hon. Friend. The first is that the Government get it: the challenges facing Bedfordshire police are well understood. I am delighted to see the chief constable, Jon Boutcher, in the Gallery tonight listening to the debate. Both he and my hon. Friend will be aware that these concerns about the funding of Bedfordshire police have been raised for some time. Indeed, the Home Office sent in a batch of officials in July 2015 in response to previous concerns that had been expressed about the stability of the police effort there.

VIEW FROM THE HOUSE continued

It was largely for that reason that one of my first visits, having been made Minister for Policing, was to Bedfordshire, back in July. I met the chief constable and the police and crime commissioner, Kathryn Holloway. I also patrolled Bedford with officers. I feel that I left with a good understanding of the challenges facing the police force, which is managing a large rural area and two major towns. It is an area with considerable challenges relating to the counter-terrorism effort and to serious organised crime. It has also seen a significant increase in demand on a system that already feels stretched. The force has felt strongly for some time that it has a shortage of officers and detectives. In this debate and on previous occasions, my hon. Friend has used the good example of Leighton Buzzard as a place where the profile of policing has changed considerably over the years. That message is well received. Secondly, I want to congratulate Bedfordshire police, and I hope that my hon. Friend will join me in that. I congratulate not only the current leadership of Kathryn Holloway and Jon Boutcher but the frontline officers and detectives who are working under considerable pressure at the moment. It is worth noting the commitment to frontline policing that has been demonstrated by that leadership. I note that there are slightly more police officers in service now than there were in 2016—there are 36 more—and that the force is actively recruiting. There is a commitment to maintaining frontline policing.

I also note that considerable savings have been made since 2011 by Bedfordshire police, as is the case in other forces as well. I can see what is happening with the force's quality improvement programme, the estate rationalisation, and the extensive collaboration with other forces, notably Cambridgeshire and Hertfordshire, all of which is to be applauded. I note that reserves are being used and that when Bedfordshire is asked to lead, whether in the context of the Eastern Region Special Operations Unit, the counter-terrorism intelligence unit or the joint protective services in the tri-force, it does so excellently and is highly respected for its leadership.

All that is important to recognise, particularly given the context of considerable stretch and strain on resources. From my conversations with Commissioner Holloway and the chief constable, I know that they both work tirelessly to challenge and improve the independent inspectorate's judgments on efficiency and effectiveness.

VIEW FROM THE HOUSEcontinued

It is a source of controversy and challenge in Bedfordshire, but the facts are that the independent inspectorate, which has an incredibly important function in terms of driving improvement across the police system, judged Bedfordshire in its 2016 assessment as requiring improvement for efficiency and inadequate at effectiveness. Those judgments have been challenged, and the leadership is working tirelessly, as I said, to improve those ratings. However, we must recognise the challenging context and that comparable forces in what we call the most similar group—Essex and Kent—are rated good in all those categories while receiving funding per head that is equal to or lower than Bedfordshire's. That is not a criticism; I simply want to place it on the record that there is continued room for improvement in efficiency and effectiveness. Everything that I have heard from the current leadership is that they are absolutely up for that challenge and working towards it. My third point relates to what the Government are doing about this situation. Although actions will speak louder than words—I hope actions will soon be forthcoming—let me try to reassure my hon. Friend that we are determined to ensure that the police have the resources that they need while continuing to challenge them to be more efficient and effective. I am delighted that he recognised that it is the Government's role on behalf of the taxpayer to continue to hold police forces' feet to the fire and to push them to be even more efficient and effective. We are determined to ensure that they have the resources they need, which is why police funding was protected in the 2015 settlement. As proof, direct resource funding going into the police stands at over £11 billion, which is up £100 million on 2015.

We also have to recognise that there are very real cost pressures on the police system, not least in the recent pay award. That is why, as my hon. Friend knows, since my appointment in June I have personally led a review of every single police force in England and Wales. I have spoken to or visited all 43 of them, including Bedfordshire, to make sure that, alongside the other work we are doing, the Government genuinely understand what is happening out there: the shifting demand on the police; how the police are responding to manage that demand; what their current plans are for improving efficiency and effectiveness, because that matters a great deal; and what their plans are for managing their reserves, which are considerable.

I recognise that Bedfordshire is using its reserves, and I recognise that, as a percentage of revenue, Bedfordshire's reserves are below the national average, but across the police system something like £1.6 billion of public money is tied up in

VIEW FROM THE HOUSEcontinued

reserves. The public and the taxpayer deserve to know about those plans in a lot more detail than we have had in the past. That is part of the review process I am leading. My hon. Friend the Member for South West Bedfordshire has been very tenacious and persistent on this front, so let me reassure him that public safety is the Government's No. 1 priority. We of course have a responsibility to make sure the police have the resources they need. We have a responsibility to adapt if we have a clear picture of what is happening out there in terms of shifts in demand and cost pressures. We are grateful to the police for their co-operation in that process. I ask for a little more patience from him on the long journey he has had since being elected here. I hope that before the end of the year we will be able to come to this House with proposals for the 2018-19 police funding settlement. We are absolutely determined to make sure that this country has the most effective and trusted police force in the world. That is what we want for this country and that is what we want for Bedfordshire.

Andrew Selous

If you wish to raise with me any concerns or to let me have your views please do not hesitate to contact me.

Write to – Andrew Selous MP, The House of Commons, London SW1A 0AA

Email – andrew.selous.mp@parliament.uk

Or to make an appointment to see me please telephone my constituency secretary Tracey Farrugia on 01582 662821

MARK VERSALLION

Mark Versallion is our Central Bedfordshire Councillor, representing the Ward of Heath & Reach which includes the seven villages of Hockliffe, Eggington, Stanbridge, Tilsworth, Tebworth, Wingfield, and Heath and Reach.

Besides speaking on our behalf at planning committees and other meetings, he continues to work on issues brought to him at his regular ward surgeries or when contacted through his office.

If you have any questions or concerns Mark can be contacted on 01525 234 000 or at mark.versallion@centralbedfordshire.gov.uk.





Chalgrave Games 2018

Memorial Hall, Tebworth
Saturday 7th July
at 1pm

Best swinging 60's fancy
dress competition,
dog show & doggy fancy
dress competition,

teddy bear orphanage,
kids games and races,
BBQ, Beer tent,
stalls and other exhibits



Grand Prize Draw

Raffle tickets are now on sale from :-
Roger Masters on 01525 873035,
The Plough Inn on 01525 873077,
Punch Opticians Toddington on 01525 875099,
or any member of the Hell Committee



LOCAL ORGANISATIONS - *Update*

Book club

We have had another great year at the book club, reading a wide range of books, mainly thrillers. We enjoyed our annual lunch together, this year we went to The Anchor pub and restaurant in Tilsworth and had a wonderful lunch. There are currently nine of us in the club and we usually meet about once a month. We take it in turns to host the very informal meeting over a cup of coffee and a biscuit, discuss the book we have read and have a general chit chat – it is a great opportunity to read some very good books and more importantly we get to socialise with people in the village we may not get to see very often.

If anyone is interested in joining please contact Noeleen Thomson on 872168.



PARISH AsSEMBLEY - go to pages 26 & 27



Excellent attendance at the Memorial Hall on 12 April
for the annual parish plan.

Chalgrave Sports Club



Last season was good, we managed to have a number of games and with two new opponents - Milton Bryan and King William. We also took part in the 6 a side competition at Milton Bryan and hope to do so again this year. Over the winter our fixture list for this season is developing and now includes some matches against Flitwick Cricket Club. Our first match is scheduled for the end of April but the pitch is water logged at the moment! We are working hard on it to try and be ready for the season.

The new Club House is now up and running with a few minor tasks to be complete – like plumbing in the sink and finishing off the flooring. There is always work needed to maintain and improve our facilities but it can be used. This would not have happened had it not been for the hard work and time given by committee members and also non-committee members like Nev and others. We will be putting up a plaque in the clubhouse to recognise all those who helped. Talking of plaques there is a special thanks to Sign of the Times for providing a splendid Chalgrave Sports Club sign which is now on the front of the Club House.

We have a new artificial pitch which was little used last year but will be this season. Dates for diaries – Race Night 21st April and our Festival of Cricket on 3rd June. Plough Inn Golf Society – the last Golf Day at Easter had to be cancelled because of the weather but we have two more later in the year – 1st September and the 27th December. Organised by Ed Morton. We also have a golf match against a team from The Farmers Boy in Kenworth in June.

We are always looking for new members (players or committee) so if you want to join us please contact Mike or myself.

Phil Parry and Mike Wells





Chalgrave Open Gardens

This year we will hold
our open gardens on
Saturday 16 June.

Save the day!

An entry fee of £5.00
will give you
entry to all the
gardens participating.

, Chalgrave Memorial Hall
Wingfield Road, Tebworth,
LU7 9QQ

Refreshments, afternoon teas
and plant sale.

LOCAL ORGANISATIONS - *Update*

Chalgrave WI

In our **January** session we learned about **Tai Chi** and were taken through some of the moves - intriguing names such as 'Grasp the swallow's tail', 'White crane spreads wings', 'Snake creeps down' and (my favourite) 'Part the wild horse's mane'.

In **February** we were joined by Jeff and his canine companion "Buddy" from **Medical Detection Dogs**. Their **Medical Alert Assistance Dogs** are trained to alert individuals managing life-threatening conditions by detecting minute changes in body odour. The medical conditions they can support include Brittle Type 1 diabetes, Addisons' disease, non-epileptic seizures. Their **Bio-Detection Dogs** who detect the minute odours associated with many cancers.

In **March** we learned about brewing and had the chance to sample 6 different beers and ales each paired with a cheese. Many of us were surprised to find we liked beer more than we thought and came away thinking we would try it again. It must rank as our longest session ever – at over 2 ½ hours!!



LOCAL ORGANISATIONS - *Update*

We received some great feedback from the latest **Yarl's Wood** event.

"Everything in the bag was good – soap and shower gel especially."

"I wanted to say thank you for the gifts. I got these earrings and I've not had any since I arrived here. I'm so happy!"

"I got eyeliner and a scarf. And the eyeliner is blue – so cool!"

"Little things mean a lot. Your kindness is a gift from God."

"The socks are great – we need them."

"Thank you so much for the gifts. Apart from the party, there's nothing here for Christmas, and we really appreciate all you've done for us. Thank you."

"It's easy to feel that nobody cares when you are here. We appreciate you so much because of that. It means a lot."

We continue to collect toiletries, underwear and accessories – we have heard some alarming stories about whether the women have access to sanitary items so we will be including these in our collections.

Please feel free to join us as a guest for one of our future meetings or contact me for a chat.

Debbie Parry : Chalgrave WI President 07770 543797

Email : Debbie.parry@accenture.com



SAVE THE DAY!
Street Party
To Celebrate a Royal Baby
and a Royal Wedding
The Lane, Tebworth,
Saturday 19th May 3:00 till 8:00

Details will be announced on the Chalgrave Website



Why do stars twinkle? The answer is they don't. The light from stars has travelled millions or billions of miles through space and when it reaches us the earth's atmosphere bends and reflects that light so that they appear to twinkle.

The planets also appear like twinkling stars to us but their light is the sun's light reflected back to us. Venus is the brightest star due to its clouds of white carbon dioxide gas which reflect lots of sunlight. It's the brightest object in the sky after the sun and moon. As it is closer to the sun than earth we only see it low in the sky at dawn or dusk which is why it's known as the morning or evening star. Mercury is even closer to the sun but it's smaller, not as reflective and appears lower in the sky close to the horizon so it's difficult to see. The other planets further from the sun appear higher in the sky and are 'up' for longer. Lots of useful information on what to see and when to see it can be found at

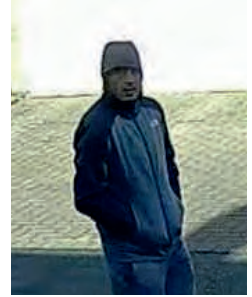
www.in-the-sky.org

Although there are no spectacular celestial events in the coming few months the warmer nights mean it's much more comfortable to sit outdoors, and who knows, you might see a meteorite on any night of the year. **Jan Day**



CAUGHT ON CAMERA

There have been quite a few burglaries in Toddington recently. On March 21st, this man was caught on CCTV following a break-in in Tebworth. Due to the quick response of the public, this man has been caught and will face prosecution! This is a good time to remind ourselves to be vigilant. Chairman of Chalgrave Parish Council, Phil Parry says we should report all incidents, no matter how small, otherwise we look like a low crime area and end up with inadequate police cover!. Always report any suspicious incidents to 101, or call 999 if a crime is in progress.



Meanwhile, here is some sensible advice from Bedfordshire police:

- Keep front and back doors locked, even when you're at home.
- Install a burglar alarm with a visible alarm box and fit a door chain and spy hole for extra security.
- Keep all valuables and keys out of sight and out of reach of doors and windows and store high value items in a hidden safe.
- Mark your belongings and register them for free with 'Immobilise'.
- Fit energy efficient security lighting.
- Don't leave spare keys in obvious places such as under doormats or plant pots.
- Keep items that could be used to break into your property such as ladders, tools. and wheelie bins stored safely away.
- Lock side gates to prevent easy access to the rear of the property and check fencing regularly to keep it in good repair.
- Use pea shingle on driveways or under windows, as it crunches loudly when stepped on and trim overgrown hedges and plants to remove hiding places and improve surveillance use a timer switch to make your house look occupied, even when it isn't.

ALL OUR YESTERDAYS No. 30 - Cattle on the A5



Tim Ludgate remembers that in the late 1940's cattle were herded regularly, with just two men, from Trinity farm in Hockliffe down the A5 to the station yard off Tavistock street and loaded on trucks to be shipped to the army barracks in Aldershot. The station which was on the left where the council offices now are was closed in 1967.

Eric Ludgate would often herd cattle from Ivy Farm to Harlington station! How times have changed! **Ken Green**



Info and questions to Kenandlyn@tinyworld.co.uk 874107

A CHALGRAVE CHILDHOOD

Local residents can still remember what it was like to have the rural peace of Chalgrave shattered by World War II. Although hard to imagine now, Tebworth and Wingfield were not untouched by the conflict. Our parish often found itself under the flight path of German bombers on their way to search out the munitions factories of Vauxhall in Luton and AC Delco in Dunstable and the local men of the Home Guard would call 'lights out' if anyone carelessly left blackout curtains open. Any chink of light could make the whole village a target. Everyone was issued with gas masks of course, children included; even babies who



had full body protection. As the planes flew over, people would take cover under tables hoping it would give them protection. Some built Anderson shelters in their gardens, digging down into the earth and making a roof from corrugated iron. One bomb did land in the back garden of a house opposite where the Memorial Hall now stands and local children would play in the large indentation it made in the earth for years after.

One unlucky lady, Mari, who had moved out of London with her children to escape the Blitz, found her cottage in Wingfield completely demolished by a bomb blast. She wasn't put off though and stayed in and around Tebworth for the rest of her life. Once the rubble of the cottage was cleared away, people lived in a static caravan on the site for many years.

As local men went off to fight, the land army helped on the farms. We even had our own German prisoners of war, Oscar and Evan, who worked on the land alongside local farm workers. They must have liked it here and apparently never tried to escape. One even stayed on after the war was over. At the village school, regular dances were held to raise money for our troops.

The war did eventually end and the whole country turned out to celebrate. Chalgrave threw a big VE Day party too, with trestle tables brought from the Sunday school and laid out in the field at Park Corner. There was no village hall at that time of course. That would be built post war as a memorial to the fallen heroes of both world conflicts. **Frances Masters**

PROPOSED BIN CHANGES: Have your say!

Central Bedfordshire Council is now consulting with its residents on potential changes to bin collections. Some of the options being mooted could see new services introduced, such as food waste and glass, while others suggest changes to the current arrangements for recycling, domestic waste (black bins) and garden waste. The council wants to hear residents' views on these.

Bin collections are one of the most expensive services the council provides: the council currently spends £14million a year on collecting and disposing of waste from over 118,000 households. That amounts to around 7% of the council's budget, or 9% of residents' council tax. Because the current bin contracts are about to come to an end, the council is seeking ways to reduce the cost of the service; increase efficiencies; and increase recycling levels. The options consulted on could save the council over £2million every year, which is money it can invest in other vital services, such as those for vulnerable adults and children.



There are three different options being considered for recycling collections:

Option one: continues the current arrangements.

Option two: cardboard and paper would be put into a separate box.

Option three: glass collections would be rolled out to all residents and collected in a separate box.

Residents' recycling would continue to be collected every fortnight under all of the options. The council is also considering a weekly food waste collection to all households.

A recent study showed more than half of the black bin contents the council collects could have been recycled. More efforts to recycle, along with the suggested changes to the collections, could help reduce the amount of waste going into peoples' black bins, and allow the council to move to collecting domestic waste (black bins) every three weeks rather than fortnightly. This would deliver significant savings.

The council is also consulting on charging for optional fortnightly garden waste collections. Councils are not required to collect garden waste separately, but many have been doing so. However, around a third of councils now charge for this service. Central Bedfordshire Council is proposing a £40 annual charge, which works out at £1.54 per collection. **For further information please contact Deborah McDonald, Senior Communications Officer, on 0300 300 5595 or email deborah.mcdonald@centralbedfordshire.gov.uk**

The council's Executive will consider all of the public feedback at its meeting on 10 May 2018. Any changes would be implemented in autumn 2019.



Rogation Walk Sunday 6th May 2018

We plan to 'Beat the Bounds' of Chalgrave again this year.

We leave from the Queen's Head Tebworth at 10.00 am sharp.
(You could also join us at the Hockliffe PO at around 10.20).

We stop for lunch at the Fancott Arms around 1pm and get back to Tebworth around 5pm. We walk most of the boundary and it is the only day of the year that we are legally entitled to walk those parts of the boundary that are not a public right of way.

We hope you can join us.

CHALGRAVE PARISH ASSEMBLY

12th April was the annual Parish Assembly at Chalgrave Memorial Hall.

In many villages these events are poorly attended but Chalgrave did itself proud with a hall packed full of residents wanting to meet with representatives from inside and outside the village.

Chair of the Parish Council, Phil Parry, reported that the issue of ownership of the village pond is moving towards mediation. A 20 mile per hour advisory speed restriction will soon be imposed on the S-bend in Tebworth. He observed that fly tipping has been a growing problem, although there has been some recent success in identifying those responsible by going through the rubbish. One fine has been imposed and two cases are currently going to court. Hooray!

MP Andrew Selous talked of his concerns about low police cover. He also informed us that the Luton and Dunstable hospital will be merging with Bedford Hospital which is seen as a positive, but that the phlebotomy unit is due to be moved to the Arndale Centre in Luton, something which will be less convenient for residents of this parish and something he is objecting to on our behalf.

He said people are reporting a long wait to see a GP. Part of the issue is that GPs are retiring at 50. New GPs are being trained but there is currently a shortage. Phone signal coverage is still a problem for many in the village, as is the litter from McDonalds thrown from cars. A move is in progress to try and make fast food outlets print vehicle registration numbers onto packaging so the culprits can be identified. At the moment photographic evidence is needed to prosecute, so if you spot somebody doing it, take a picture if it's safe to do so.

District Councillor, Mark Versallion, reported that traffic going through Hockliffe on the A5 has increased from 13,000 cars a day to 16,000. Tailbacks are now regular. A bypass would be the answer but is unlikely to happen.

Ken Green told us how, many years ago, the footpaths had been overgrown but had now all been cleared. The way to keep them clear is to continue to walk them. The next Parish Rogation Day will be on 6th May, starting outside the Queen's Head at 10am.

Our local Police community support officer confirmed that Chalgrave is a low crime area but did note burglaries had gone up in the last 12 months; something to watch. He was informed about the HGVs still going through the village despite the lorry ban. One of the main problems could be there is still no signage on the M1; something which needs addressing.

Steve Calder reported increased numbers attending Chalgrave Church. New vicars, Nigel and Linda Washington, serve five local churches and are enthusiastic about being involved in local activities. This is a big celebratory year for Chalgrave Church which was built in the year 1218. He was pleased to report there is now a church choir and all are invited to get involved. The church AGM will be on 29th April; again all are welcome. Tea and biscuits will be served after the meeting, as they are after the regular 9.30am Sunday service.

Roger Masters told us the village hall is doing very well, with lots of bookings and many successful fundraising events last year. Roger Fenwick, of the Senior Citizens committee, said there are 50 senior citizen households in the parish. All can apply to go along to the annual joint Christmas dinner with Toddington which is organised by Chris Osborne of Flitwick Rotary.

We heard that the new Chalgrave News team have now completed their first full year and are pleased with how the magazine is being received. Feedback is always welcome, as are suggestions for extra items.

The Plough reported that they are now open all day Saturday. On 7th May, they will have a Hog Roast and there will be a car show in July.

At the Queens Head, Debbie and Glyn are confirmed as the new managers. They also manage new owner, Martin Murphy's, Cross Keys at Totternhoe which is doing very well and recently had a pizza oven installed, so fingers crossed for some tasty food at the QH soon.

Debbie Parry informed us the WI has over 40 members with lots of activities throughout the year and a very popular monthly book club which meets in the evening. Noeleen Thompson runs the daytime book club which also meets monthly in members' homes. We are certainly a very literary bunch in Chalgrave!

The evening ended with a sociable glass or two of wine and some tasty nibbles provided by the Parish Council. No wonder there was such a big turn out!



SPOTTED in Chalgrave

Strange scenes above Chalgrave village hall on April 1st!



How does your Garden grow?



One of the nice things about being a gardener, is there is always something to look forward to in the garden, even in the depths of winter. Now that we have survived the “Beast from the East”, Spring is finally upon us.

The spring bulbs are coming up and there are touches of green appearing on the hedgerows. I think now is one of the best times of year in the garden, there seems to be a special verdancy, and the promise of things to come. Enjoy this special time, go out and see the Spring blossom on trees and shrubs, not necessarily only in your own garden.

You may now be hatching plans for your garden this year. If you normally plant annual summer bedding, you might like to consider planting more hardy perennial plants, as these will come up again each year. At this time of year you can buy small pots of perennials quite cheaply, these will soon bulk up during the growing season. Try to resist the garden centre displays of plants in flower, as they will probably soon be over. Young plants have the promise of flowers still to come but make sure you can provide the right conditions for the plant you have fallen in love with. There will be a selection of Perennials for sale at Chalgrave Open Gardens Day, all tried and tested to destruction in Chalgrave. Perennials that have proved reliable for me:



Rudbeckia Fulgida “Goldsturm”



Echinacea Purpurea



Kniphofia ' Various cultivars'

Don't forget to keep feeding the wildlife in your garden, they will be very busy raising and feeding their young. *Happy Gardening.* **John Wojdyla**

SAVING THE QUEEN'S HEAD

They do say the end of something is always the beginning of something new and, sad as it was to see the Queen's Head close its doors in January, it's been heart-warming to observe the efforts being put into its refurbishment.

The energy put in by our village in 2017 to save our local has seen the Queen's Head bucking the worrying trend of pub closures. That says a lot about us and a lot about our community.



Living right next door means I've been in a unique position to track progress. There's certainly been a lot of activity as various teams of workmen have come and gone. There have been plumbers, electricians, heating engineers, painters and carpenters all playing their part in restoring the QH to its former glory. There are new toilets, double glazing, new lighting, flooring, central heating and a new boiler. It's been painted inside and out and the old signage has been removed to reveal the original 1926 sign. The new beer lines are going in now and there's talk of an opening celebration soon.

New owner, Martin Murphy, says:

'The LPG is due to be installed the second week in April. Once that is in place and, assuming the furniture is delivered on time, I'd hope to be selling you a pint at the end of April!' **Frances Masters**





PUNCH

Eyecare and eyewear for all the family

- ◆ Professional friendly qualified Opticians and Contact Lens Practitioners
- ◆ Private, NHS and Corporate eye examinations (Eyecare vouchers accepted)
 - ◆ All contact lenses supplied and fitted
 - ◆ Range of children's spectacles
- ◆ Designer sunglasses: Ted Baker, Bench, Joules, RayBan, Oakley etc.

Pop in anytime, a warm welcome awaits.

18 High Street, Toddington, Beds, LU5 6BY 01525 875099



VANSAR BLINDS

Make your house a home with blinds and awnings from **Vansar Blinds...**

- * Local family run business
- * Fabulous range of fabrics & colours
- * Choose in the comfort of your own home or workplace
- * **FREE MEASURING & QUOTATIONS**

**For a Friendly and Reliable Service
Call**

01525 220477 or 01582 699565

e - sales@vansarblinds.co.uk

www.vansarblinds.co.uk



Advertising Rates

Quarter Page

Colour £50.00 B&W £35.00

Half Page

Colour £80.00 B&W £60.00

Full Page

Colour £135.00 B&W £110.00

thechalgravenews@gmail.com

07927 144090



**Yoga and Relaxation
for Mind and Body**

Weekly Yoga Classes Toddington and Flitwick

Monday 7.30 - 9pm
Toddington Methodist Church Hall

Saturday 9 - 10am
Flitwick Parish Church Hall

Classes suitable for all levels



Allison Proctor
Tel: 01525 635376
Mob: 07919 088341
info@flyingfroggyoga.co.uk
www.flyingfroggyoga.co.uk



**One to one personal training or group classes
available in your area!**

Debbie Morton

DAMFITPT

07890 563140

debbiemortonpt@gmail.com

www.damfitpt.co.uk

Instagram - damfitpt

108 Tebworth Road, Wingfield LU7 9QH

STUART DREW ELECTRICAL SERVICES

****Part P Certified** **Member of the ECA****

From extra lights & sockets to rewires.
For a professional, courteous service with
free estimates and all work guaranteed,
please call me.

**Fully Qualified & Insured
Over 30 Years Experience**

**29 Lincoln Way
Harlington
Beds.
LU5 6NG**

**Telephone
01525 875965
07941 812662**

Elite Motor Services

for complete car care!

Thorn Farm, Thorn, Nr. Dunstable, Beds. LU5 6JH

☎ **01582 606507**

www.elitemotorservices.co.uk

- Servicing - all makes and models to a high standard and without invalidating your manufacturers warranty
- Air Conditioning Service and Repair
- General Repairs
- Fault Finding Diagnostic Service - to all vehicle systems
- Tyres and Exhausts
- MOT Service - taking your car from Pre-MOT Inspection through to certification

A long term established local business
with highly experienced certified technicians

Car collection service available

Call us for friendly advice and
check our competitive rates

***Your One Stop Motoring Solution
with Quality Service Guaranteed!***



D. Daize
Mob. 07831 403377

D. Andrews
Mob. 07799 350386

Portrait Photography

**Family Portraits
Pet Portraits
Makeovers
Events**



visual
iPHOTOGRAPHY
mpact

**Tel 07980 840052
Bedford Road Wootton
hello@visualportraits.co.uk
www.visualportraits.co.uk**

Andrew Garner ABIPP

NEVILLE

FUNERAL SERVICE

Established 1875

Reassurance when you need it most



Neville Funeral Service
Neville House Marsh Road
Leagrave Luton LU3 2RZ
t: 01582 490005

e: luton@nevillefuneralservice.com



Neville Funeral Service
The Old Church Flitwick Road
Amphill MK45 2NT
t: 01525 406132

e: amphill@nevillefuneralservice.com



www.nevillefuneralservice.com

Ark House Vets

'we care like you care'

Caring & professional healthcare for your pets

- Friendly
- Local
- Convenient
- Easy parking
- Pet food delivery
- Healthy pet club
- Puppy playgroup
- Weight Watchers
- Exotics Service
- Neutering
- Microchipping
- Acupuncture
- Physiotherapy
- Wormers and flea treatment
- Modern Diagnostic Facilities
- Preventative health care
- Behaviour Clinic
- All Domestic Pets Welcome



01525 373329

22 Hockliffe Street,
Leighton Buzzard LU7 1HJ
[between Countrywide & Connells]



ROUNDED IN PEOPLE

www.arkhousevets.co.uk



Find us on facebook



AJ AUTOS (TODDINGTON) LTD

MOT Centre and Mechanical Repairs

Free local delivery and collection

Other services include:



- **MOT's**
- **Tyres**
- **Exhaust**
- **Servicing**
- **All major repairs**



- Competitive Pricing -

Opening Hours: 8.00am – 6.00pm Monday - Friday

17-19 High Street, Toddington, Beds. LU5 6BX

Tel: 01525 872630

Chalgrave IT Solutions Ltd

'We take the pain out of IT'

- ◆ New computer sales and installation, including accessories
- ◆ Computer maintenance and repair including upgrades and virus removal
- ◆ Broadband, network, router setup and support
- ◆ Our new 'Chalgrave Total Care' service provides a complete 24/7 software update solution giving you peace of mind, knowing that all your programs are up to date

Our staff are Microsoft certified, ensuring quality expertise you can trust
Friendly efficient service with special rates for Chalgrave Parish customers

If you need help please call Mike for a no obligation discussion on:

01525 213126 / 07900 253262

Email: pchelp@chalgrave.it / **Website:** www.chalgrave.it



StotenGillam
chartered accountants
chartered tax advisers

www.stotengillam.co.uk

We are an established firm of accountants based in Bedfordshire.
Our aim is to provide an outstanding professional, cost effective
and friendly service to our business and personal clients alike.



FREE Initial consultation for:

Accounts • Audit • Self Assessment
Bookkeeping • Payroll • Corporation Tax
VAT • Pensions • Tax Enquiries

"Practical Solutions for Growing Businesses"



99 High Street South | Dunstable | LU6 3SF
Tel: (01582) 608601 Find us on **facebook**

Scan **QR CODE**
to find us online





Now Taking On New NHS And Private Patients

Services offered -

Exams • Fillings • Extractions • Implants • Root Canal
Treatment • Crowns • Cosmetic dentistry • Veneers •
Teeth Whitening • Prosthetic work • Hygienist

We are a family run dentist based in the heart of Toddington. We have three dentists and one hygienist, all which have a calming and welcoming nature and are used to treating nervous patients. Pop in to register or give our team a call.

01525 877066

www.toddingtondental.co.uk

Info@toddingtondental.co.uk




Toddington
Dental Practice

19 Church Square
Toddington
Beds
LU5 6AA

CAPELLO HAIR DESIGN

www.capellohairdesign.co.uk

*Our passion is hair and customer service thus creating
an environment that you will want to return to.*

We offer:

- ❖ Colour Specialists
- ❖ Conditioning Treatments for all hair and scalp problems
- ❖ 10% Student discounts Mon-Thurs
- ❖ Discounts for senior Citizens Mon-Wed
- ❖ Loyalty System
- ❖ Free Parking

OPENING TIMES

26 High Street, Toddington
Beds. LU5 6HY
Tel: 01525 877599



Mon - Wed	9.00am - 5.30pm
Thursday	9.00am - 8.00pm
Friday	9.00am - 7.00pm
Saturday	8.30am - 4.30pm

Follow us on facebook and twitter



Panache



Call or visit to receive your FREE hair and beauty
consultation from our friendly and experienced team.

- Toni and Guy trained stylists
- L'oreal Advanced Colour Technician
- Wedding hair trained by Patrick Cameron
- Minx nails
- Dermalogica facials
- Fake Bake spray tans

01525 873031
HAIR&BEAUTY
panachehairbeauty.co.uk

Gift vouchers available
Senior citizen discount Mon - Weds
10% Student discount Thurs - Fri

Visit our website for exclusive discounts.

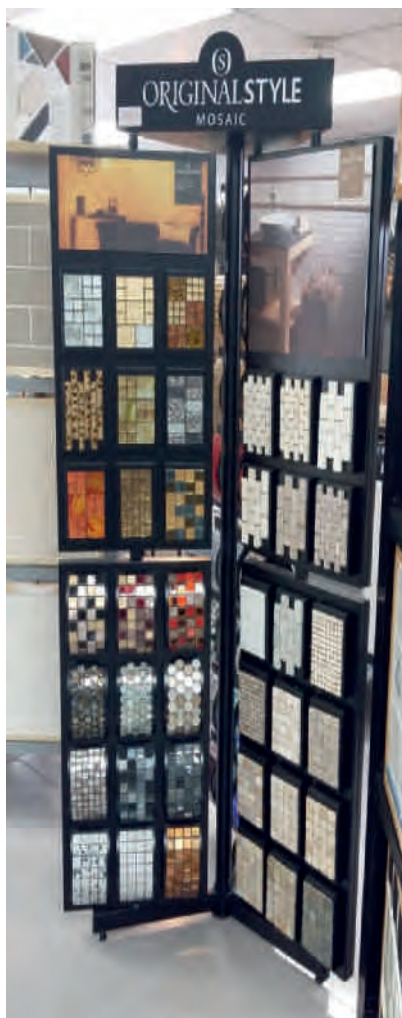


Compass Flooring & Wall Tiles

- * Established 39 years
- * Floor & Wall tiles
- * Stone & Mosaic
- * Wood Flooring
- * Amtico & Karndean
- * Underfloor Heating
- * Full Fitting Service
- * Domestic & Commercial
- * Free Home Survey
- * Samples at Home Service
- * NHBC Pride In the Job
Award Winners

Compass House
Lancaster Road
High Wycombe
HP12 3PY

Tel. 01494 533 531
www.compassflooring.co.uk



Hallworth Farm – The Granary

Three self-catering cottages available for short-term rentals, each with two bedrooms, a family bathroom and an open-plan living space.

For enquiries, please visit our website, hallworthfarm.co.uk, or phone 01525 874 163.



The Integrated Coaching Academy



**Would you like to be a
Therapeutic Life Coach or Trainer?**

**Enrol now
The NCFE accredited
Fusion® Therapeutic Coaching Diploma
And Distance Learner Skills Certificate**

Contact:

Frances.masters@btinternet.com

www.integratedcoachingacademy.com



Association of Integrative
Coach-Therapists
Professionals
Since 2008, we have been helping coaches and therapists to develop their skills and knowledge.

K & K PETFOODS

**YOUR FRIENDLY LOCAL PETFOOD
SHOP**

**WHATEVER YOUR NEEDS,
WE CAN SUPPLY**

Horse Feeds and Equipment

**Large range of Dog and Cat foods
(e.g. Hills, IAMS, Eukanuba, Beta, Bakers
and many more)**

Weekly special offers on canned food

All small animals catered for

HOME DELIVERY SERVICE AVAILABLE

**Open Mondays to Saturdays
(closed Wednesdays)**

**Market Square, Toddington
01525 872003**

Laptop & Computer

Server, Printer, Apple,
Setup, Repairs,
Data recovery, Internet,
Wireless, Network,
Virus infection,
Home/Office computer problems.
Services from £40.

**Your local IT support,
7 days services, we visit you
No Fix - No Fee
Qualified, Experienced**

**PClaprepairs@gmail.com
01525 306316 – 07925 338435**

Joyce's Professional Alterations

**Alterations & Repairs
Undertaken to Trousers,
Jeans, Skirts, Curtains, etc.**

You can find me next to
CAPELLO Hair Salon at:
26, High Street, Toddington

Monday, Tuesday, Wednesday
& Thursday 10am to 3pm

Please call in.

Tel: 01582 619177
Mobile: 07989423389

Sculptors
01525 850002
NEW CLIENTS
Get 10% off your first order with this voucher

About Sculptors

Joining our talented and dedicated team of sculptors is a great opportunity for anyone with a passion for art and a desire to work in a creative environment. Our sculptors are experienced and skilled in a wide range of media, including wood, stone, metal, and plaster. They are also responsible for the design and construction of our sculptures, which are displayed in our gallery and sold to the public.

Our studio is located in the heart of the town, and we are proud to be a part of the local community. We offer a range of services, including design, construction, and installation. We also offer a range of courses and workshops for anyone interested in learning more about sculpture.

Our company is a family-run business, and we are committed to providing a high-quality service to our customers. We are also committed to supporting the local economy and promoting the arts.

Our sculptors are experienced and skilled in a wide range of media, including wood, stone, metal, and plaster. They are also responsible for the design and construction of our sculptures, which are displayed in our gallery and sold to the public.

Our studio is located in the heart of the town, and we are proud to be a part of the local community. We offer a range of services, including design, construction, and installation. We also offer a range of courses and workshops for anyone interested in learning more about sculpture.

Our company is a family-run business, and we are committed to providing a high-quality service to our customers. We are also committed to supporting the local economy and promoting the arts.

A life time of fantastic fun

Advertising Rates

Quarter Page
Colour £50.00 B&W £35.00

Half Page
Colour £80.00 B&W £60.00

Full Page
Colour £135.00 B&W £110.00

thechalgravenews@gmail.com

07927 144090



ENGLISH HAIR & BEAUTY AWARDS FINALIST 2018

TREATMENTS INCLUDE

GEL MANICURES & PEDICURES

CND SHELLAC™

GEL NAIL EXTENSIONS

BUILDER GEL OVERLAY

LVL LASH LIFT • EYELASH EXTENSIONS

HIGH DEFINITION BROWS

WAXING • FACIALS • MASSAGE

INTIMATE WAXING

By appointment only

FULLY QUALIFIED & INSURED
SALON THERAPISTS

OPEN TUES - SAT

LATE NIGHTS WED-FRI

☎ 01525 837447

📍 10 High Street

Toddington LU5 6BY

✉ prettypolishltd@gmail.com

gelii
SYSTEMS

CND
Create From Scratch

Book online at www.prettypolishnailsandbeauty.co.uk

COUCH TO 5K

After coming back from a trip to Australia, and my twenty something daughter commenting about how unfit I seemed, I decided that I needed to do something about it. I saw a Facebook advert for a Couch to 5k course locally and wondered if I could give it a go, I had previously been a bit of a jogger but an Achilles tendon injury a few years ago had put a stop to that. I was concerned about getting injured again but though, now being the wrong side of 50, it was now or never and I should give it a go so I signed up for the 9 week course at Houghton Hall Park on a Sunday morning.



You need to do three runs a week, two on your own plus the Sunday morning run with the group in Houghton Hall Park. Chloe, our group leader, was very encouraging and great at supporting our group of varying ages and abilities.

Debbie Parry and Will Randell decided to join me so the three of us started the Couch to 5k course. The course builds you up slowly from running for just thirty seconds at a time to running for thirty minutes solid by week nine and you do a 5k Park Run for your graduation when you get a medal and a certificate to prove you made it. You download a free NHS app for your phone and choose a celebrity to encourage you while you are running, the app tells you when to walk and when to run and gives you little tips along the way.

Some weeks seemed fairly easy and some were a real struggle, particularly in the cold, snowy weather when the wind was icy and you were trying to run for 25 minutes without freezing to death!

We all completed the course and did our first Park Run on March 17th, it wasn't easy but it felt amazing to get to the end and loads of people were at the finish line cheering you on and encouraging you at every step. No matter how unfit you are or if you have never run before, this course can get you running. You need to put the work in and do the practice runs, and it definitely helps to do it with a friend or two to keep you going on the tough weeks. The Run Together group in Houghton Regis, which is the group that organised our Couch to 5k sessions, is really good and non competitive, it is not like your usual running group, it is about encouraging each other and getting fit in a friendly atmosphere and I cannot recommend them enough. Why not give it a try? **Sue Watling**

ON BUDGETS

April is a time for azaleas, rhododendrons, bluebells and ... budgets. One of the first principles of sound financial management is the setting of an annual budget – which should arouse our suspicions from the off. The budget for the coming year is necessarily a work of fiction. As with all fiction, some of it is imaginative and some of it is dull. Dull budgets assume that the new year will be a carbon copy (remember those?) of the previous one. This means that whatever unusual income was received and whatever unexpected expenses were incurred, that same pattern of surprises is projected into the budget period. Whoever said that lightning doesn't strike twice, wasn't an accountant.

Imaginative budgets are a different kettle of fish, and the smell of fish is pretty unavoidable when you open up a truly creative budget. Think Hat Factory slogan: "If you dream it, you must do it!". Typically, at least 80 per cent of the planning meeting that sets the budget is devoted to the expenditures. Budget heads complain how impossibly mean their allocation was last year and how they had to use their own credit cards to settle bills because the corporate card had been declined. Happy to support each other in their extravagant spending bids, the budget quickly assumes the contours of a small country. Then, when some board members are already half-way into their coats, some brave soul raises the issue of funding: who will fund this budget? After the dirty looks have subsided, the same bunch of visionaries conjures revenue streams out of thin air. Job done!

Old hands, who have lived through numerous budget cycles, understand that there are times and seasons to be observed in the budget year. Times to speak up and times to pipe down; times to speed up a project and times to slow it down. Times to spend freely and times to shut up shop. Management loves to hear that a department has announced a hiring freeze or a spending cap, even though their impact may be invisible 3 months later.

How to solve the age-old problem of an impending spending shortfall in the old budget year, with the attendant risk of a lower allocation in the new one? One of the best wheezes is to place a large order with a former supplier who has recently gone into liquidation. It is important to check that there is absolutely no possibility of the order being completed and to pay as little as possible up front. Then, about 60 days later, cancel the invoice and credit the accounts. The unused funds are then available to spend in the new budget year.

All the best budgets have a line item for contingencies. Originally, only the relief of pestilence, plague and famine qualified for contingency funds, but after a long period of grudging concession, the regulations can ultimately be relaxed to include golf weekends and fact-finding excursions to the Caribbean.

ON BUDGETS continued

period of grudging concession, the regulations can ultimately be relaxed to include golf weekends and fact-finding excursions to the Caribbean.

Finally, we must not forget accruals. My accountant is now insisting that we tell him the value of unused staff holiday at the start and end of our financial year. I have just invited him around to count the paper clips. But, in the right hands, accruals are another valuable budgetary tool. Push late-year revenues into the new year and over-pay late year invoices with reliable suppliers. At one time, it was possible to overpay HMRC and be credited with a better rate of interest on the balance than was available from the bank. Don't quote me on any of this. Happy Budgeting!

Peter Warburton

RESTAURANT REVIEW The Swan at Cranfield



Ian Lothian



"Delicious!..."



tebadvisor

This week the Rotary Club of Flitwick Vale had a lovely meal at the Swan in Cranfield.

A group of about 15 of us chose some very interesting meals from the menu, for example, my starter was broccoli, pickled radish with a pine nut salad and a main course of braised duck leg with spring cabbage, bacon and cannellini bean cream.

The food was delicious and the service was excellent.

The meal cost in the region of £25.00 a head (including gratuities) and the house wine cost £18.00 per bottle.

Everyone left saying that they thoroughly enjoyed their evening and all said they would go back one day.

NEWS FROM THE PLOUGH

As we wave goodbye, and say good riddance to the winter, the Plough is springing into flower. The window boxes are in bloom, the bulbs are popping up and the table candles have been replaced with fresh flowers from the garden. The first mow is imminent and there are plans for a raised bed at the bottom of the garden to grow fresh vegetables for the menu.



It is with great sadness that we say goodbye to Adam who is off to start his fulltime job. He will be missed but we hope to see him on the other side of the bar spending his wages and you never know we might be able to convince him to make the odd celebrity appearance !

As we continue to get busier we have welcomed Mike, Libby, Sam and Sally to the team, some of whom also pop up at our sister pub, The Farmers Boy in Kensworth.

More members of staff are also in the pipeline!

We recently launched our 'Mussels Wednesday' menu offering a choice of sauces. This is proving popular so please ring or pop in and book as we order in our mussels fresh and would hate to run out and disappoint.

Looking ahead, we will be continuing with The Plough's involvement in the ever popular **Car Show here in Wingfield, which this year is booked for Sunday July 15th**. We will be open all day serving Hog Roast from the front With a bottle bar, and curry and chilli from the conservatory with a mini beer festival. The main bar will be open as usual and Pimms flowing.

Here's hoping for a wonderful summer, see you all in the garden .

Stacey & Dave

We will also be having a Hog Roast on this next coming Bank Holiday

Monday, 7th May.

We will be open all day and the kitchen will also be open serving at lunch

ALL SAINTS CHURCH CHALGRAVE *at Easter*



Stunning photos of our lovely Church bestowed with Easter flowers.



AUNT AGNES

Well dear readers despite taking my well-deserved retirement some years ago and moving to my luxury Caribbean Island home I can tell you that is not as easy a life style as some may think.

Only last week I had to sack one of my many servants as I could unfortunately no longer afford their wages due to the repair costs of my air conditioning system.

I know that towards the end of last year, like all other pensioners I received my £200 annual cold weather payment, although out here we call it a hot weather payment, but I don't think Mrs May fully realises just how expensive it is to run my air conditioning system which I have to have on 24 hours a day for every day of the year.

I have therefore written to Mrs May pointing this out and asked her if she could increase this payment for all British pensioners living in the Tropics.

Anyway back to the reason you are reading this, if indeed you are still reading this rubbish.

Last year I had a letter sent to me from anonymous of Tebworth asking for my advice on what could they do to resolve a long standing issue of forgetting meetings, birthdays etc. as this had been a problem for them for many years now. My initial advice was for them to tie a knot in the corner of their handkerchief whenever they needed to remember something and when they next used the handkerchief they would see the knot and remember why they tied it.

Well needless to say when this was printed in the Chalgrave News I am told that yet another typing error occurred and instead of the word **knot** it was printed as **snot**.

I would have thought that it was obvious to everyone that this was an error but not to anonymous of Tebworth, and so the only further advice I can give them is to take the very large load of handkerchiefs they have been keeping to the launderette as soon as possible.

Until next time dear readers....



DUNSTABLE WAR MEMORIAL REFURBISHMENT

The War Memorial, which dates from 1952, stands in Priory Gardens between the Priory Church of St Peter and Priory House.



At present 289 men and women from Dunstable who lost their lives during both World Wars are commemorated on the rolls of honour. Research has been undertaken over the last two years to look into people missing from the rolls of honour and it is believed that over fifty men and women who gave their lives for their country may have been omitted.

The memorial is showing signs of needing repair, restoration and stabilisation and it is intended that refurbishment work will begin in May or June. New plaques will be fitted to the refurbished memorial which will include all the names of people who fell who were resident in Dunstable when they set off to war.

In addition, a combined services emblem will be fitted to commemorate those who have fallen in other conflicts which have taken place since 1945. The structure will be faced in Portland stone and new paving provided.



Artist's impression of the refurbished memorial

It is also hoped that we can trace living relatives of the people who are having their names added for the first time so that they can be informed of our plans. If you know of anyone who was resident in Dunstable and died in one of the wars please let Friends of Priory House and Gardens know so they can be sure to be included.

HELP RENOVATE OUR WAR MEMORIAL!

Unveiled in 1952 and funded by public subscription, time has taken its toll on the war memorial situated in Priory Gardens, Dunstable.

The Friends of Priory House and Gardens, are raising funds to refurbish the existing monument to make it a fitting memorial to commemorate Dunstable's fallen heroes.

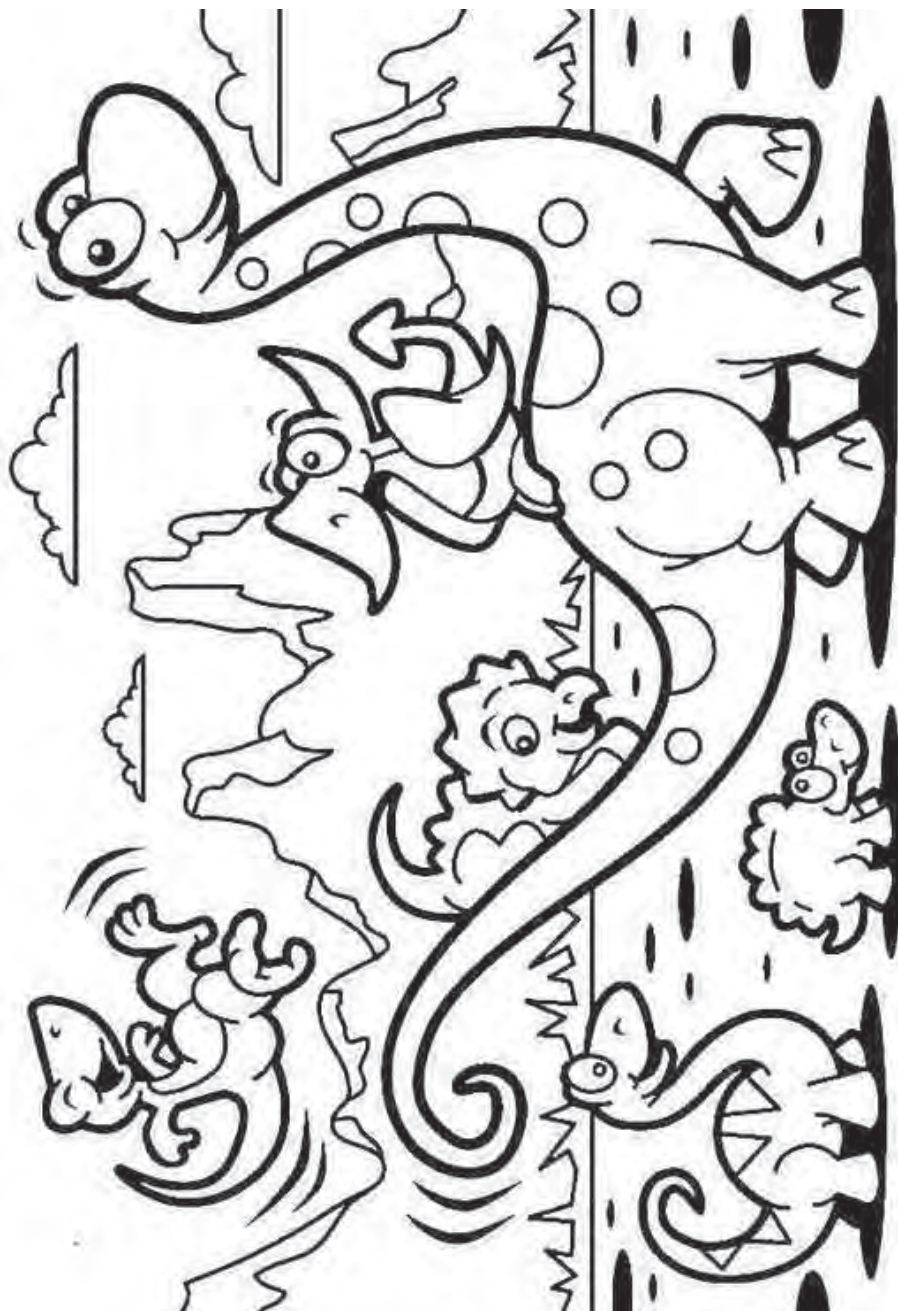


FRIENDS OF
PRIORY HOUSE
AND GARDENS
DUNSTABLE

If you would like to support the project please make cheques payable to the Friends of Priory House and Gardens.

You can hand cash and cheque donations into Priory House.

Simply copy and colour this page and return to :
The Old School. 16 The Lanein an envelope, by June 1st for judging. (Remember to include your
name and address on the back of your drawing) Good Luck!

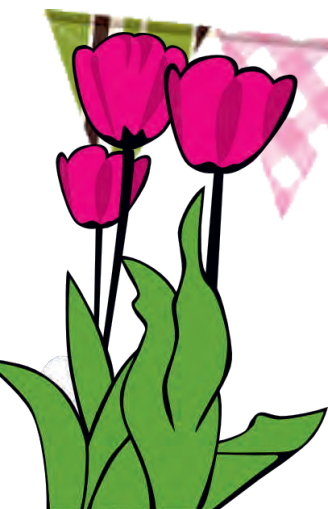


Parish Noticeboard



A big welcome to new Chalgrave resident

Boe Amelia at the Grand Chapel.



If you know of anyone else who is celebrating a special event , please let us know, so they can be included.

CHALGRAVE MEMORIAL HALL

Fees and Charges effective from 1st January 2018

Period	Parish Resident Individual and Parish voluntary community groups 50% charge	**Non-Parish resident or Parish commercial	**Non-Parish organisation or commercial
<i>MONDAY TO FRIDAY</i>			
9am – 6pm	£8.50 per hour	£17.00 per hour	£20.00 per hour
6pm – 11pm*	£10.00 per hour	£20.00 per hour	£27.00 per hour
<i>FRIDAY</i>			
6pm – 12 midnight*	£125	£250	£285
<i>SATURDAY</i>			
9am – 6pm	£11.00 per hour	£22.00 per hour	£25.00 per hour
6pm – 12 midnight*	£140	£280	£350
12.30 pm – 12 midnight*	£175	£350	£400
<i>SUNDAY</i>			
10am – 10pm*	£11.00 per hour	£22.00 per hour	£28.00 per hour
<i>'WEEKEND RATE'</i>			
(Friday 6pm to Sunday 12 noon) NB Hall must be vacated at 11pm Friday and 12 mid-night Saturday	£290	£580	£690

***NB. Hall must be locked up and vacated by this time unless by special arrangement.**

- Bank Holidays/New Years Eve – Rates on application
- Committee Room available for hire separately when Hall not hired – Rates on application
- ** Block/Regular booking discount of up to 15% available
- Bookings outside above hours subject to individual rates on application.
- Non-refundable deposit of 50% of the booking fee payable to confirm booking
- **£300** damage deposit required on all bookings - refundable in full subject to no damage caused to Hall, contents, equipment or grounds and the Hall and grounds being left in a clean and tidy state.

NB should the cost of reparation to the Hall contents or equipment exceed the deposit

FOR BOOKINGS PLEASE TELEPHONE: 07831 482556

Chalgrave News Editorial Team		thechalgravenews@gmail.co.uk	
Chalgrave News Advertising	Sharon Brown	thechalgravenews@gmail.co.uk	07927 144090
Police Community Support Officer	PCSO Hannah Retallack	LPT.LeightonBuzzardLinslade&Rual@bedfords hire.pnn.police.uk	01582 473411
Member of Parliament	Andrew Selous	andrew.selous.mp@parliament.uk	0207 2198132
Secretary to Andrew Selous	Sue Howats	howats@parliament.uk	01582 662821
Ward Councillor	Mark Versallion	mark.versallion@centralbedfordshire.gov.uk	01525 234000
Chairman of Parish Council	Phil Parry		07831 605600
Vice Chairman of Parish Council	Ken Green		01525 874107
Parish Council Clerk	Lesley Smith	chalgravepc@btinternet.com	01525 874716
Councillor	Jan Day		01525 875921
Councillor	Debbie Levy		01525 877149
Councillor	Kevin Ludgate	kevin.ludgate@oliverlandpower.co.uk	07768 606968
Councillor and Traffic Calming	Mike Wells	mikewells@clara.co.uk	01525 877098
Councillor	Paul Whitton		01525 877181
Central Beds Unitary Council			0300 300 8000
Rector of Chalgrave Church	Rev'd Linda Washington	http://www.allsaintschalgrave.org.uk	01525 714442
Church Secretary	Christine Smith		01525 876839
Church Flowers	Lesley Colella		07905 241076
Chairman, Chalgrave Mem. Hall	Roger Masters		01525 873039
Hall Booking Secretary	Velda Cooke		07831 482556
Senior Citizens Committee	Roger Masters		01525 873039
West Charity	Lesley Smith	www.chalgrave.org	01525 874716
Chalgrave Sports/Cricket Club	Mike Wells		01525 877098
Book Club	Noeleen Thomson		01525 872168
Beavers/Cubs/Scouts	David Yirrell		01525 875410
Rainbows/Brownies/Guides	Janet Hornsby		01525 875203
Toddington Medical Centre		www.toddingtondoctors.co.uk	01525 872222
Toddington Library			01525 873626
Electricity Board (Emergency)			0800 7838838
Water Board (Emergency)			0845 7145145
Toddington Childcare		Playgroup/am & pm school clubs	01525 875400
Toddington Area Helping Hands		www.voluntaryworks.org/organisation/toddington-area-helping-hands	07882 988270

MAKING THE HOUSE BUYING
PROCESS EASIER WITH
HONEST, PROFESSIONAL &
FRIENDLY MORTGAGE ADVICE



MORTGAGES

We look at the whole market
so that you do not have to

We are local
and cover
Beds,
Bucks & Herts



PROTECTION

We cover all you need to
know about protecting you,
your family and your home

- Mortgages for First Time Buyers, Homemovers and Remortgages
- Life, Critical Illness & Income Protection cover
- Unemployment Insurance
- Pension & Investment referrals
- Wills & Solicitor Recommendations
- Commercial, Bridging and Development Finance



FINANCIAL ADVICE

We pride ourselves on
providing suitable advice
whatever your needs

call Stuart
for a
no obligation
chat

advice@sbms-online.co.uk
www.sbms-online.co.uk



COMMERCIAL

Help with commercial and
development finance tailored
to your requirements