

Autumn 2020

ISSUE 68

# CHALGRAVE NEWS

*Celebrating Chalgrave*

WINGFIELD ROAD



## DATES FOR YOUR DIARY

Day/Date	Event	Location/Contact	Time
Third Tuesday of each month	Parish Council Meeting	Memorial Hall	7.30 pm
Every other Sunday	Quiz Night	The Plough	8.00 pm
Mondays	Dominoes	The Plough	
Weekdays	Book Club	Noeleen Thompson	
Second Tuesday of each month	WI	Memorial Hall	8–10 pm
Christmas	Church Services	All Saints Church	See page 16



*At the time of going to print most of the above are cancelled or postponed.  
Please check later to see if any are resumed.*

Cover photo: Autumn sunrise on the Tebworth Poplars

**Deadline for next edition: 15 JANUARY 2021**

**Please send your contributions to: [thechalgravenews@gmail.com](mailto:thechalgravenews@gmail.com)**

**The Chalgrave News team produces the Chalgrave News in good faith and we do all we can to ensure that no offence is caused to any individual or organisation. We also reserve the right not to publish articles and contributions submitted to us if they do not comply with our policy.**

# A note from the editorial team

If 2020 was a novel it would be a compelling page turner, full of cliff-hangers, unexpected twists and unresolved issues. But as we all know, it's real. All too real. We are living through times that will feature in history books in future. So much to concern us. Coronavirus has made us all contemplate our own circumstances in a way that most of us haven't considered before. Brexit seems sometimes to have taken a back seat in the news but it is about to become a reality as the laws come into force in a few weeks time. The outcome of the American elections will affect the world and we are all bemused by the actions of Trump. You really couldn't make it up.

On a lighter note we can be thankful that we are in a low covid area and to date we have not heard that anyone in the parish has suffered. We have seen some beautiful sunrises and sunsets this autumn and captured some photos of them for this magazine.

Solar "Farms" look likely to pop up all around us and change the look of the area. Check out the relevant websites provided for more information.

We hope you enjoy this magazine and as usual we are very grateful to all our lovely contributors who make it so interesting.

We hope you all have a lovely Christmas.



# Chairman of the Parish Council

## From the Parish Council....

**Fly Tipping.** Not only is it a problem for the Parish but a national problem. If we can ever stop fly tipping in our parish it will only be tipped somewhere else. We are going to urge Central Bedfordshire Council (CBC) and Central Government to take a more serious look at this issue.

If you use a company or individual to transport and dispose of waste on your behalf, please ask to see their up to date Waste Carriers License (Upper Tier). This will give you good indication that your waste will be disposed of responsibly.



**Parking.** Problem hotspots – Corner of Wingfield Road/Toddington Road - making it dangerous for cars turning into Wingfield Road, and the Corner of Wingfield Road/St Marys Close making the road too narrow for agricultural and other large vehicles. It has also been noted that some cars are parking on pavements making pedestrians having to walk on the road.

Please park responsibly.

**Covid 19.** If you need any help, the Emergency Response Team are still active. Details are in the magazine.

**The Lane.** CBC are planning to patch and possibly resurface The Lane and in doing so have planned to close The Lane sometime between November 2<sup>nd</sup>, 2020 and February 15<sup>th</sup>, 2020 between the hours of 07.30 and 18.00. Closing the road will cause a massive problem for residents and local farmers. So, we are in discussion with CBC to minimise disruption.

**Lords Hill roundabout.** At last Highways England has agreed to change the markings on the roundabout to make it safer. There is no date for the work to start but we will continue to push HE.

**Solar Farms.** There is very likely to be a planning application for a solar farm on Chalgrave Manor Farm (details in the magazine). There was a similar application in 2015 which did not go ahead even though the application was granted. The PC is very keen to see the development of Green Energy but we are very

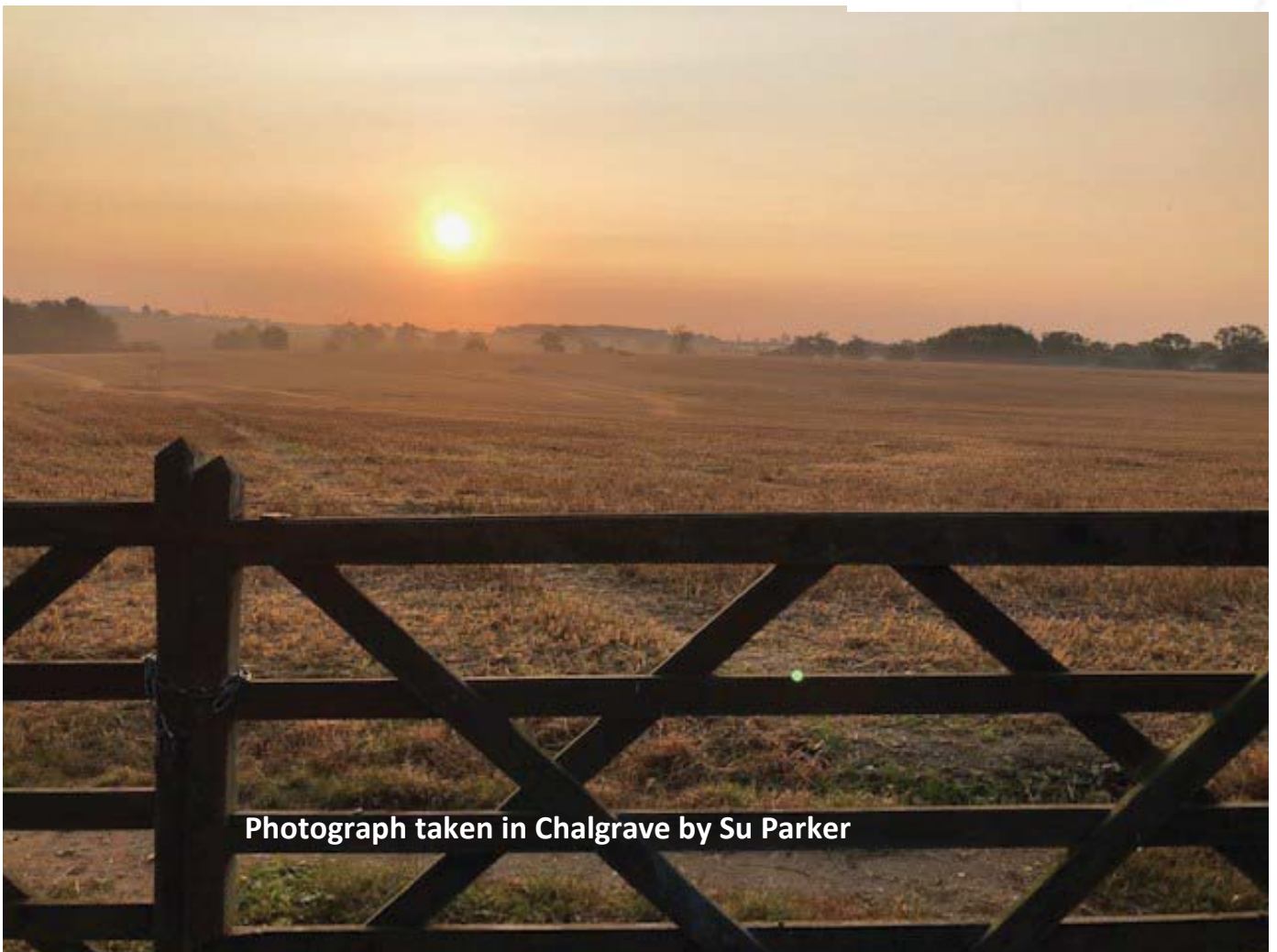
# Chairman of the Parish Council

concerned about the number of proposed solar farms, wind turbines, gas fuelled power stations and battery storage areas in our part of Central Bedfordshire – including Chalton, Chalgrave, Toddington and Tilsworth. Our Green Belt is already being heavily eroded by housing development and the land at Chalgrave Manor is good agricultural land. We are concerned that each planning application is being considered on its individual merits – there is no overall plan for these developments. We have also discovered that there is no information on how much Green Energy Central Beds produces.

Our meetings continue to be virtual usually on the third Tuesday of the month.

Please contact our Clerk for the meeting details if you want to join.

**Phil Parry**



Photograph taken in Chalgrave by Su Parker



## View from The House

### My Question to the Prime Minister on hope during the pandemic 22<sup>nd</sup> September 2020

Andrew Selous The Second Church Estates Commissioner and MP for South West Bedfordshire

*Constituents who have spent a lifetime in public service wrote to me over the weekend saying, “We are on the point of giving up”. Churchill said he had nothing to offer but blood, toil, tears and sweat, but Jeremiah 29 talks about giving us hope and a future. What can the Prime Minister say to people to give them hope over the next six months as we deal with this dismal pandemic?*



Boris Johnson The Prime Minister

*I think we have every hope. You cut me off, Mr Speaker, when I was going to answer an earlier question—quite properly. The answer is that we have every chance, if we follow this package of measures, of driving the R down, keeping our economy moving and keeping education going. Science is helping us every day. Dexamethasone, trialled in this country, is now reducing the number of deaths. We have the prospect of a vaccine. All the medical guidance I have is that, by next spring, things will be vastly improved. I do not deny for a minute that things are going to be tough for our country and our people for months to come, but we will get through it, and we will get through it well, particularly if we follow the package that we announced today.*

For more information about Andrew’s work as your MP please access his website on <https://www.andrewselous.org.uk>

To contact Andrew Selous, Member of Parliament for SW Bedfordshire.

Write : Andrew Selous MP, The House of Commons, London SW1A 0AA

Tel: 0207 2198134

Email : [andrew.selous.mp@parliament.uk](mailto:andrew.selous.mp@parliament.uk)

Or to see him Tel: 01582 662821 or email [tracey.farrugia@parliament.uk](mailto:tracey.farrugia@parliament.uk)

# LOCAL ORGANISATIONS - *Update*

## CHALGRAVE SPORTS CLUB

For obvious reasons we have had a very quiet season. We made the clubhouse Covid safe and followed Government guidelines when playing cricket. Some cricket has been played during the summer but only by very small groups using the nets. The ground was also used by the recent Car Show.



We had to cancel our Family Day, the 10/10 and the Race Night. These cancellations had an impact on our finances but we were fortunate to receive a grant. This enabled us to complete some work inside the clubhouse and to give the outside a protective coat of varnish. We can now upgrade our gang mowers, refurbish the nets and keep the 'yellow peril' running.

Looking ahead we hope to run our Christmas Golf Day and we are planning some fixtures for next season. The Race Night and Family Day are still on hold until later in 2021. Contact us if you fancy a game next season.

**Phil Parry**  
**Chair**



# LOCAL ORGANISATIONS - *Update*

## THE WI BOOK CLUB

We did manage to have few outdoor socially distanced meetings over the summer but due to the rule of 6 we are back having meetings online. We tried messenger rooms for our September meeting and it seemed to work quite well as there is no time limit for your meeting so people can carry on chatting online after the main book discussion ends.

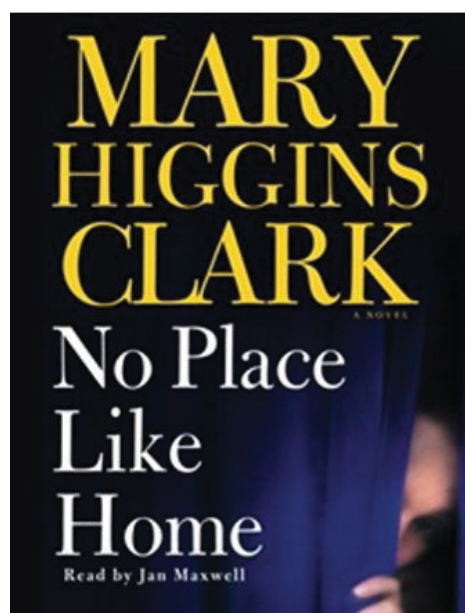
Books we have read recently are;

**No Place Like Home** by Mary Higgins Clark - Growing up under an assumed identity after accidentally shooting her mother and escaping her abusive father, Liza Barton, still fearful that her past will reclaim her, is shocked when her husband inadvertently buys her childhood home.

**Becoming** by Michelle Obama - The intimate, powerful, and beautifully written memoir by the United States' former First Lady that inspired the major Netflix documentary.

We meet to discuss the books on the fourth Thursday of the month and take it in turns to choose the books.

**For more information contact Sue ([sue.watling@hotmail.com](mailto:sue.watling@hotmail.com))**





# LOCAL ORGANISATIONS - *Update*

## CHALGRAVE WOMENS INSTITUTE .. goes Virtual!

We have held two virtual meetings – In September a talk on the Ghosts of Bedfordshire (tales of haunted pubs, black dogs and headless horsemen) and in October we had a craft session with Lucy Levenson, a former international photographer turned folk artist, check out her designs on Facebook - Lucy Levenson Designs.

Three of us met at my house and others dialled in. We made lamp shades for fairy lights – a very enjoyable session and we were pleased with the results.



These are challenging times for our organisation. Luckily Chalgrave WI has a relatively young, tech savvy membership even if some members don't enjoy Zoom meetings or have had enough of them after a day at work. Other WIs are faring less well and have a more elderly membership with the majority unable to access emails or use virtual meeting tools.

We are keen to stay connected with all of our members so we have arranged personal delivery of goodie bags to everyone. Contents include a material face





## LOCAL ORGANISATIONS - *Update*

mask (hand made by Sue Bollins), a cake (homemade by Lesley Mead), a small Yankee Candle, a face treatment mask and some spring bulbs.

We will continue to be creative to ensure we provide a variety of virtual events, and regular updates via email, messenger and Facebook, but we cannot wait to have a big get together once it is safe to do so.

**Debbie Parry**

-- 0 --

Photograph taken in Chalgrave by Su Parker



Saving  
some  
holly  
berries  
for  
Christmas!





# Footprints

If you sit by the Great Pond in Tebworth you might spot the creature who made these footprints in a muddy puddle. Not a prehistoric reptile but a moorhen – a little bird with (relatively) big webbed feet. Many thanks to Vicky Stone who gave the pond bench a much needed refurbishment this summer.

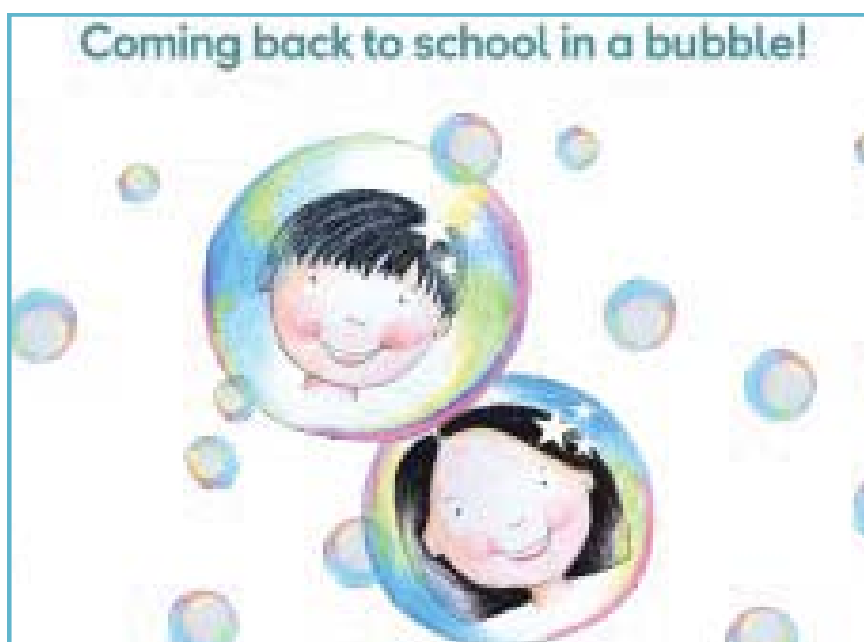


# Back to School after Lockdown...

It seems an eternity since we were last in school teaching normally again.....

except that it's not 'normal' anymore.

It's been 4 months, in terms of schooling, that we haven't had 'face to face' contact with our students .... Yes, I was in every week for Keyworker's children, but that was merely supervising, not teaching.



Now it's all change:

- \* We have Year group bubbles.
- \* In between lessons all students line up outside in their Year bubbles, to be sent onto lessons without bumping into another bubble.
- \* We have a one-way system.
- \* Teachers are moving between lessons to classrooms rather than the students moving around, unless like me you teach a practical subject.
- \* We have a 2 metre taped space around our desks at the front of the class which we have to stay within...this is not proper teaching... I like to walk around the class & check the students are OK & on task.
- \* Desks, computers & seats that teachers use, have to be sanitized before the next teacher comes in.
- \* If there is a change of Year group in any classroom, then all the desks & chairs have to be sanitized. This is after almost every lesson for me because....
- \* I'm lucky... I stay in my Food Tech room & the students come to me, but we can only teach practical work to half of the group at a time, whilst the others are doing theory work on their Chromebooks. We can only teach the same Year group bubbles on the same day in each of our Food rooms.

It is far from ideal, in terms of logistics but the practical aspect is a vital part of my subject & all Year groups need to experience cooking from Yr7 through to my GCSE groups...who will be examined on their practical skills.

We wear masks during the practicals & keep our distance...not always as easy as it sounds. But the students have risen to the challenge & practicals are working well.



# Back to School after Lockdown...

\* We are freezing & it's set to get worse as we move into winter, because we have to have all doors & windows open for ventilation.

\* There is supposed to be social distancing within the bubbles.....

Sadly many students, & indeed teachers, are struggling to adapt to this new way of teaching with all the restrictions.

COVID has thrown up many more problems than we could have imagined.

But the bottom line is that I am so glad to be back with my students face to face...

listening to their laughter, hearing their excuses as to why their homework is not in on time & just being themselves again.

This, it seems, is the 'new normal'.

**Su Parker**



# Uncharitable Dog Walkers

Some of you may know Billy, my lovely Working Cocker Spaniel, he was on the cover of the last edition of this wonderful magazine.

Now Billy is kind, gentle (as long as you aren't a pheasant), loving and loyal – but I wouldn't describe him as "Brain of Britain" or a contender for "Who wants to be a Millionaire" – in fact he's really not all that bright. He does however have one party trick which he brings out on very rare occasions, say 2-3 times a year – which leaves me absolutely astounded and astonished.



Now like all dogs, every day he has to have a "motion" and this generally occurs over in the fields and as a responsible dog owner I then pick it up in a pooh bag and dispose of it somewhere appropriate – all well and good. But dear reader, 2-3 times a year when leaning down to pick up the aforesaid item, I find it pointing skywards !!!

Not lying down in the standard horizontal posture but pointing to the sky like a Saturn 5 Rocket, The Awful Tower or the Leaning Pooh of Pisa. Well I am astounded each time this happens and wonder how much time, effort and practice this must take. I mean it can't be easy can it – just imagine the amount of positioning and thought this must take ?

Which got me thinking – if he can do this then why can't I ? I consider myself more intelligent than him and I've never achieved such a thing – though to be honest I've never tried - so on the basis of "nothing ventured nothing gained" I decided to have a go at the same thing. How hard can it be ?

That is where the trouble started and I have to state here - in public - that I have been most disappointed by the attitudes, behaviour and frankly – language – of my fellow dog walkers. Whilst I am at the side of the field practising this new ability (OK, I have yet to achieve) and attempting to explain the situation, other dog walkers have made comments, stared the other way, shouted at me, completely blanked me both then and on subsequent meetings when I have not been practicing and done virtually everything on their power to make me feel somehow unwanted or that my efforts were somehow not worthy.

So all you uncharitable dog-walkers – and you know who you are – now you know the situation, I would have expected to be met with words of encouragement next time we meet but I have now decided to give up on this personal voyage of discovery as your negativity has finally overwhelmed me.

What sad state of affairs and a searing indictment of modern attitudes!

**Colin McCausland**



# All Saints Church, Chalgrave

Chalgrave church members have been glad to gather again for worship in the church grounds for our Sunday morning services during the warmer Summer months spending socially distanced time together in the fresh air. It has been a delight to meet listening to the background sound of the birds singing whilst sitting within the grassed area and trees in the beauty of God's Creation.



The Church's 800 years anniversary on Sunday 13<sup>th</sup> September became a much smaller, more intimate gathering than the originally planned weekend of parish celebration but it was fitting in the current circumstances. Church family members gathered at 12 noon for a picnic in the church grounds, accompanied by Bishop Richard, the Bishop of Bedford and his wife Helen. We shared 800 years of historical memories (prepared by Steve Calder) which were read by different members of the congregation. This was interlaced with some worship, reminiscing about our own connections to the church, and celebration cake (individual SD cup cakes). Following the picnic, we held a more formal outdoor service to celebrate and pay tribute to the 800 years of church worship and to all who have been part of the Church's life.

The following Sunday we celebrated an outdoor harvest service with Communion, led by Bishop Alan, the Bishop of St Albans. Harvest donations were collected for the Dunstable foodbank, and we will continue to collect for Foodbank on a weekly basis as people's needs are so great this year.

With the change in the weather we now hold the Sunday services inside the church with appropriate social distancing measures in place. Numbers attending are pleasing, and we have continued to offer a combination of Holy Communion and less formal Morning Worship style services.

The church was also been open for Private Prayer over the Summer months and we are very happy to open the church for anyone who wishes to spend some quiet time in church for private prayer if wished. (Please contact Linda).

The Churches' Annual Parochial Church Meeting was on Sunday 25<sup>th</sup> October at

# All Saints Church, Chalgrave

2.30pm following a short act of Public Worship. At this meeting Sue and Margaret stepped down as Church Wardens after a long period of service, for which we offered our most grateful thanks for their dedicated hard work and service over the years. We move forward in a new way with a team approach.

At the time of writing, it is difficult to know what is ahead of us, but we step out in faith that we will continue to meet for worship in church on Sunday mornings at 9.30am and plan (if possible) to hold the following special services:

**In Loving Memory Service: 1<sup>st</sup> November at 2.30pm**

**(no Morning service)**

**Remembrance Service – Tebworth Hall**

**(probably 11.45am tbc)**

**Carols by Candlelight – 19 December 7pm**

**Crib Service 3pm Christmas Eve**

**Midnight Mass 11.15pm Christmas Eve**



***Numbers will need to be limited for our Christmas Services for Social Distancing reasons but we will look to offer as much opportunity as possible.***

We are looking at creative new ways to gather and will continue to offer a recorded worship service each week which is available on the church website, and other updates will be also be released on the church Facebook page.

In the meantime, we send our very best wishes to you all. Please stay safe. We wish you well. If you would like a chat, support of prayer, please do get in touch with Linda or Nigel

Contact email: [revdchalgrave@gmail.com](mailto:revdchalgrave@gmail.com)

**Linda Washington**



# Car Show in Wingfield



Another  
great car show  
at The Plough



# HOW DOES YOUR GARDEN GROW?

Autumn is upon us, the days are getting shorter, the garden is slowly fading from its summer splendour, but there are still a few flowers holding on. Now is the time to think about introducing some winter colour to your garden. This can be done easily by planting up pots and hanging baskets for the winter.



There are many plants that look their best in the winter. The obvious place to start is with winter flowering bulbs such as hardy Cyclamen, Crocuses, Winter Aconites, Snowdrops, Iris and early Daffodils. These can be mixed with winter bedding plants such as Polyanthus, winter Heathers, Pansy and Viola. You can also add foliage plants such as coloured evergreen grasses, Heuchera, variegated Ivy, ornamental cabbage and evergreen ferns. Here are some suggestions:



Ornamental Cabbages



Carex 'Everest'



Mixed Pansies



Polistichum Fern



Mixed winter Heathers



Heuchera



# HOW DOES YOUR GARDEN GROW? *continued*

## Bulbs/Corms



Winter Aconite



Iris Reticulata

Don't underestimate foliage plants, as the colour they bring is for the whole season, whilst flowers are more fleeting in their display.

Don't be in too much of a hurry to tidy up your garden, the spent flower stems look attractive with a heavy frost on them and they also provide much needed shelter and sources of food for wildlife.

If the weather is too dire to go out in your garden, take the opportunity to plan your garden for next year. Maybe try and grow something you haven't tried before.

Stay safe & keep strong, enjoy your gardening whatever the weather.

**John Wojdyla**





# The Big Sleep

Autumn seemed to arrive early this year, and given the weather, the state of the world and very little chance of a normal Christmas, many of you are probably wishing you could just curl up somewhere warm and hibernate until spring. Although we don't have that luxury many creatures do get through the winter by hibernating and many more become dormant or less active. Hibernation is not the same as sleeping. Hibernating animals decrease their metabolic rate, lowering their body temperature, heart rate and respiration. Some creatures periodically come out of hibernation for a while and it has been suggested that one of the reasons for this is to sleep normally and therefore dream. In colder regions animals can use extreme measures to hibernate: arctic squirrels can lower their body temperature to near freezing and bears are able to recycle their urine and proteins to avoid muscle wasting. Nearer home, we're all familiar with squirrels gathering and storing nuts for the winter but all hibernating mammals actively overeat in late summer to increase their body fat which they can burn for energy during the winter. Hedgehogs, which are already endangered, are at risk of not surviving the winter unless they can fatten up enough first. If you accidentally disturb a hibernating hedgehog cover it up and leave some cat or dog food and water nearby so if it wakes up it can feed. Bats hibernate in roosts. They look for places that have a constant temperature and are free from frost and damp. Ideal places are caves, old mine shafts and cellars but many bats roost in holes in large trees or in buildings, where they may use lofts or squeeze behind tiles or cladding. Many hibernate in colonies where they can huddle together for warmth. A hibernating bat can lower its heart rate to just 4 beats a minute compared with 1000 beats when flying.



One of the cutest hibernating creatures is the dormouse but sadly they are extremely endangered and it's unlikely that any live in Chalgrave. As well as winter hibernation, if food is scarce at other times of the year they can lower their body temperature and 'doze' to conserve energy spending up to three-quarters of the year 'asleep'. Although true hibernation only refers to warm-blooded

# The Big Sleep

animals that can actively alter their body temperature, the term is also used for other creatures such as insects which can overwinter in a dormant state. Honeybees don't hibernate although the hive is minimally active in winter but many bumblebees hibernate in holes in the ground or in hollow stems. In many species of wasps and bees it's only the queen that hibernates ready to start a new colony in the spring. Ladybirds often huddle together for warmth under leaves or bark. Some butterflies such as the peacock hibernate and you may have come across one hanging in a shed. Leave it alone, it may be hibernating rather than dead. With all this hidden wildlife sheltering around us it's best not to be too tidy in your gardens and sheds. You could even encourage them by making bug hotels and leaving a pile of logs or leaves and twigs around. Don't cut down faded plant stems until spring. You could even put up a bat box to provide a roost.



Don't forget the wildlife that won't be hibernating. Like us the birds will just have to make the best of it. With less leaves on the trees they'll be easier to spot and they will appreciate a few extra winter snacks.

**Jan Day**



This is even better than the "what color is this dress" dress.



## ***STUART DREW ELECTRICAL SERVICES***

**\*\*Part P Certified\*\*    \*\*Member of the ECA\*\***

From extra lights & sockets to rewires.  
For a professional, courteous service with  
free estimates and all work guaranteed,  
please call me.

**Fully Qualified & Insured  
Over 30 Years Experience**

**29 Lincoln Way  
Harlington  
Beds.  
LU5 6NG**

**Telephone  
01525 875965  
07941 812662**





# PUNCH

Eyecare and eyewear for all the family

- ◆ Professional friendly qualified Opticians and Contact Lens Practitioners
- ◆ Private, NHS and Corporate eye examinations (Eyecare vouchers accepted)
  - ◆ All contact lenses supplied and fitted
  - ◆ Range of children's spectacles
- ◆ Designer sunglasses: Ted Baker, Bench, Joules, RayBan, Oakley etc.

*Pop in anytime, a warm welcome awaits.*

18 High Street, Toddington, Beds, LU5 6BY 01525 875099

## VANSAR BLINDS

Make your house a home with blinds and awnings from **Vansar Blinds...**

- \* Local family run business
- \* Fabulous range of fabrics & colours
- \* Choose in the comfort of your own home or workplace
- \* **FREE MEASURING & QUOTATIONS**

**For a Friendly and Reliable Service  
Call**

**01525 220477 or 01582 699565**

e - [sales@vansarblinds.co.uk](mailto:sales@vansarblinds.co.uk)

[www.vansarblinds.co.uk](http://www.vansarblinds.co.uk)



## Advertising Rates

### Quarter Page

Colour £50.00      B&W £35.00

### Half Page

Colour £80.00      B&W £60.00

### Full Page

Colour £135.00      B&W £110.00

[thechalgravenews@gmail.com](mailto:thechalgravenews@gmail.com)

07927 144090

# Elite Motor Services

*for complete car care!*

Thorn Farm, Thorn, Nr. Dunstable, Beds. LU5 6JH

☎ **01582 606507**

**[www.elitemotorservices.co.uk](http://www.elitemotorservices.co.uk)**

- Servicing - all makes and models to a high standard and without invalidating your manufacturers warranty
- Air Conditioning Service and Repair
- General Repairs
- Fault Finding Diagnostic Service - to all vehicle systems
- Tyres and Exhausts
- MOT Service - taking your car from Pre-MOT Inspection through to certification

A long term established local business  
with highly experienced certified technicians

Car collection service available

Call us for friendly advice and  
check our competitive rates

***Your One Stop Motoring Solution  
with Quality Service Guaranteed!***



D. Daize  
Mob. 07831 403377

D. Andrews  
Mob. 07799 350386





# NEVILLE FUNERALS

We help you prepare for the choices you have to make.

NEVILLE. Because there is a difference.

## AMPTHILL

The Old Church, Flitwick Road MK45 2NT

t: 01525 406132

e: [ampthill@nevillefuneralservice.com](mailto:ampthill@nevillefuneralservice.com)

## LUTON

Neville House, Marsh Road, Leagrave LU3 2RZ

t: 01582 490005

e: [luton@nevillefuneralservice.com](mailto:luton@nevillefuneralservice.com)



[www.nevillefuneralservice.com](http://www.nevillefuneralservice.com)

# Ark House Vets

'we care like you care'

## Caring & professional healthcare for your pets

- Friendly
- Local
- Convenient
- Easy parking
- Pet food delivery
- Healthy pet club
- Puppy playgroup
- Weight Watchers
- Exotics Service
- Neutering
- Microchipping
- Acupuncture
- Physiotherapy
- Wormers and flea treatment
- Modern Diagnostic Facilities
- Preventative health care
- Behaviour Clinic
- All Domestic Pets Welcome



01525 373329

22 Hockliffe Street,  
Leighton Buzzard LU7 1HJ  
(between Countrywide & Connells)



INVESTOR IN PEOPLE

[www.arkhousevets.co.uk](http://www.arkhousevets.co.uk)



Find us on facebook



## AJ AUTOS (TODDINGTON) LTD

### MOT Centre and Mechanical Repairs

### Free local delivery and collection

#### Other services include:

- **MOT's**
- **Tyres**
- **Exhaust**
- **Servicing**
- **All major repairs**



**- Competitive Pricing -**

**Opening Hours: 8.00am - 6.00pm Monday - Friday**

**17-19 High Street, Toddington, Beds. LU5 6BX**

**Tel: 01525 872630**



# CAPELLO HAIR DESIGN

www.capellohairdesign.co.uk

*Our passion is hair and customer service thus creating  
an environment that you will want to return to.*

*We offer:*

- ❖ Colour Specialists
- ❖ Conditioning Treatments for all hair and scalp problems
  - ❖ 10% Student discounts Mon-Thurs
  - ❖ Discounts for senior Citizens Mon-Wed
- ❖ Loyalty System
- ❖ Free Parking

#### OPENING TIMES

Mon - Wed	9.00am - 5.30pm
Thursday	9.00am - 8.00pm
Friday	9.00am - 7.00pm
Saturday	8.30am - 4.30pm

26 High Street, Toddington  
Beds. LU5 6BY

**Tel: 01525 877599**



*Follow us on facebook and twitter*



# Panache



Call or visit to receive your FREE hair and beauty  
consultation from our friendly and experienced team.

- Toni and Guy trained stylists
- L'oreal Advanced Colour Technician
- Wedding hair trained by Patrick Cameron
- Minx nails
- Dermalogica facials
- Fake Bake spray tans

**01525 873031**  
**HAIR&BEAUTY**  
panachehairbeauty.co.uk

Gift vouchers available  
Senior citizen discount Mon - Weds  
10% Student discount Thurs - Fri

Visit our website for exclusive discounts.



## Now Taking On New NHS And Private Patients

### Services offered -

Exams • Fillings • Extractions • Implants • Root Canal  
Treatment • Crowns • Cosmetic dentistry • Veneers •  
Teeth Whitening • Prosthetic work • Hygienist

We are a family run dentist based in the heart of Toddington. We have three dentists and one hygienist, all which have a calming and welcoming nature and are used to treating nervous patients. Pop in to register or give our team a call.

# 01525 877066

[www.toddingtondental.co.uk](http://www.toddingtondental.co.uk)

[Info@toddingtondental.co.uk](mailto:Info@toddingtondental.co.uk)



**Toddington**  
Dental Practice

19 Church Square

Toddington

Beds

LU5 6AA



## Hallworth Farm – The Granary

Three self-catering cottages available for short-term rentals, each with two bedrooms, a family bathroom and an open-plan living space.

For enquiries, please visit our website, [hallworthfarm.co.uk](http://hallworthfarm.co.uk), or phone 01525 874163.



**StotenGillam**  
chartered accountants  
chartered tax advisers

Our aim is to provide an outstanding professional  
cost effective and friendly service

- ✓ Established over 50 years
- ✓ Full range of business and personal accountancy and tax services
- ✓ Traditional values
- ✓ Forward thinking and modern technology
- ✓ Latest cloud software
- ✓ Free initial meeting



Tel: 01582 608601  
Alban House,  
99 High Street South,  
Dunstable, LU6 3SF



Contact us today:  
[enquiries@stotengillam.co.uk](mailto:enquiries@stotengillam.co.uk)  
[www.stotengillam.co.uk](http://www.stotengillam.co.uk)  
f @stotengillam

# Chalgrave IT Solutions Ltd

'We take the pain out of IT'

- ◆ New computer sales and installation, including accessories
- ◆ Computer maintenance and repair including upgrades and virus removal
- ◆ Broadband, network, router setup and support
- ◆ Our new 'Chalgrave Total Care' service provides a complete 24/7 software update solution giving you peace of mind, knowing that all your programs are up to date

Our staff are Microsoft certified, ensuring quality expertise you can trust  
Friendly efficient service with special rates for Chalgrave Parish customers  
If you need help please call Mike for a no obligation discussion on:

**01525 213126 / 07900 253262**

**Email:** pchelp@chalgrave.it / **Website:** www.chalgrave.it

## The Integrated Coaching Academy



**I C A**

**Would you like to be a  
Therapeutic Life Coach or Trainer?**

**Enrol now  
The NCFE accredited  
Fusion® Therapeutic Coaching Diploma  
And Distance Learner Skills Certificate**

Contact:

[Frances.masters@btinternet.com](mailto:Frances.masters@btinternet.com)

[www.integratedcoachingacademy.com](http://www.integratedcoachingacademy.com)



**ncfe.**



Association of Integrative  
Coach-Therapist  
Professionals  
where coaching, counselling and therapy meet

## K & K PETFOODS

**YOUR FRIENDLY LOCAL PETFOOD  
SHOP**

**WHATEVER YOUR NEEDS,  
WE CAN SUPPLY**

Horse Feeds and Equipment

Large range of Dog and Cat foods  
(e.g. Hills, IAMS, Eukanuba, Beta, Bakers  
and many more)

Weekly special offers on canned food

All small animals catered for

HOME DELIVERY SERVICE AVAILABLE

Open Mondays to Saturdays  
(closed Wednesdays)

**Market Square, Toddington  
01525 872003**



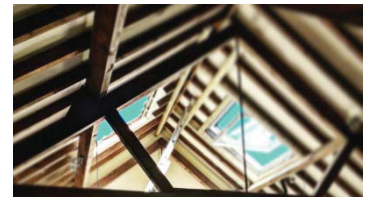


Highly recommended across all platforms with 20 Years experience working across the commercial and domestic sectors. Award winning, fully qualified and insured team offering only the highest standards of workmanship, project management and customer care.

New works and restoration projects.



- Pitched roof projects
- Flat roof projects
- Leadworks
- Skylight installer
- Solar installer
- Roof repair and cleaning



**01908 042 038**

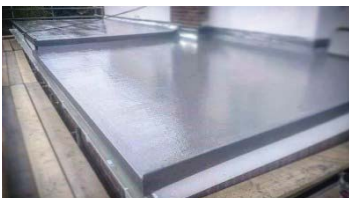
**07305 795 484**

**info@rosboroofting.com**

**www.rosboroofting.com**

**@rosbo\_roofing**

**@Roofers**



# Solar Farm, Trinity Hall

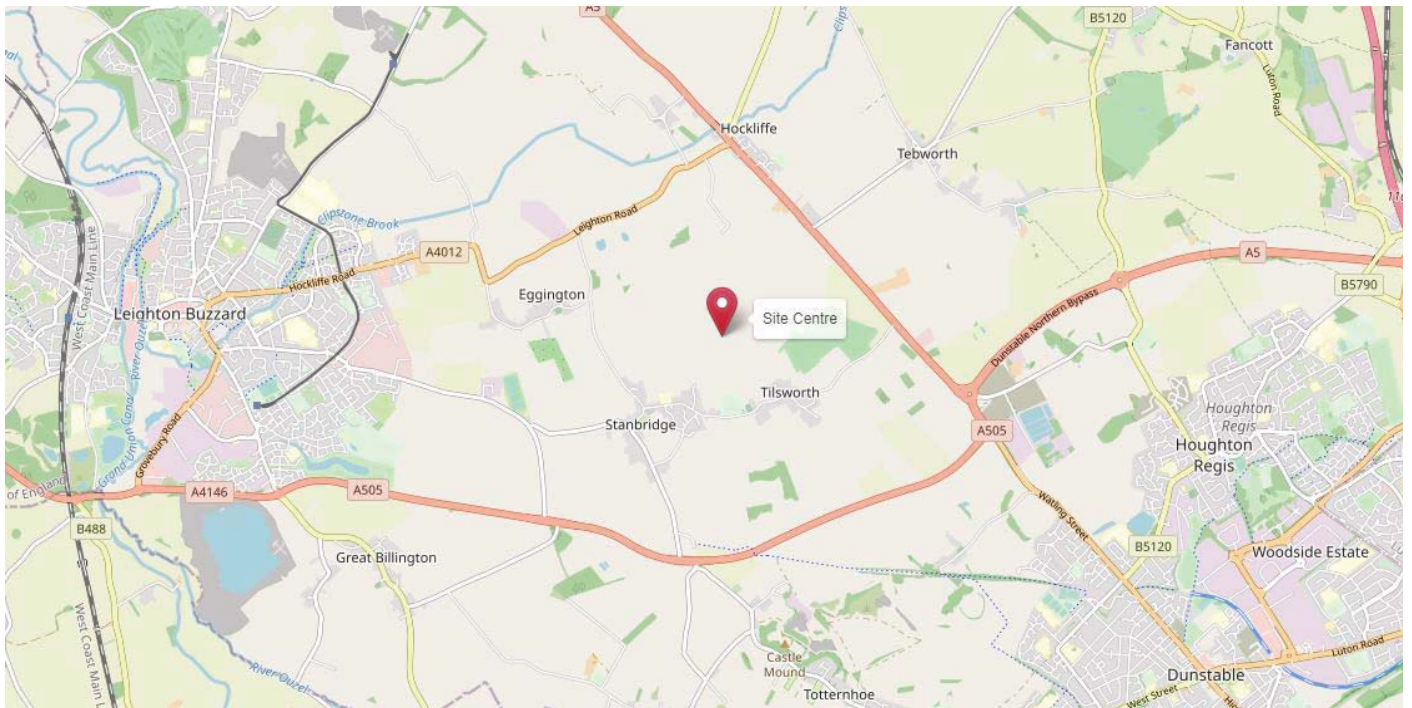
## Proposal for vast solar farm, Trinity Hall, north of Stanbridge Rd, Tilsworth

Planning Application: CB/20/01795/SCN

European Energy, a Danish company that develops, owns and operates wind and solar farms all over the world, has identified a site to the north of Tilsworth village for the installation of a vast solar farm. Construction is planned for 2021, taking around 4 months.

The proposals involve European Energy funding, developing, constructing and operating a photovoltaic (PV) power plant on 26 hectares (65 acres) on land north of Stanbridge Road, Tilsworth. The installation will have a peak power output of 18 megawatts (MW) sufficient to produce clean, renewable energy to power the equivalent of 5,500 local homes, year-round.

*Figure 1: Centre of site of proposed solar farm*



The proposals will consist of the following key elements:

- Approximately 40,000 solar PV panels mounted on metal frames aligned north to south, which will rotate slowly on a horizontal axis throughout the day to track the sun's trajectory;
- Up to six inverter / transformer buildings distributed throughout the solar panel



# Solar Farm, Trinity Hall

array field;

- A single-storey Distribution Network Operator (DNO) substation and associated control building that will form the solar farm's interface with the local electricity grid network;
- Up to three storage and battery containers with associated inverters and HVAC (heating, ventilation and air conditioning) units;
- Temporary construction compound incorporating a laydown area for delivery, a welfare facility for workers and site office;
- 2m high security fence with CCTV cameras
- Complementary ancillary works including drainage swales, habitat enhancement and landscape planting.

*Figure 2: Area of proposed solar farm and proposed access from Tilsworth*



A public consultation phase is underway, but because of the current government guidance restricting mass gatherings and travel, the company is not proposing to hold a public exhibition and instead is reaching out to local stakeholders and residents by electronic and postal means instead.

Detailed information on the proposal can be found at:

[www.europeanenergy.com/uk/trinity](http://www.europeanenergy.com/uk/trinity)

# Solar Farm, Trinity Hall

The company welcomes comments and correspondence should be directed to the email address: [trinity@europeanenergy.com](mailto:trinity@europeanenergy.com) Stanbridge Parish Council has requested that Robinson & Hall, the consultants acting for European Energy, undertake a full community engagement process including all households in Stanbridge, Tilsworth and Hockliffe. They have suggested a virtual meeting where residents can participate or a socially distanced meeting on the playing field or indoors at the Stanbridge and Tilsworth Community Hall.

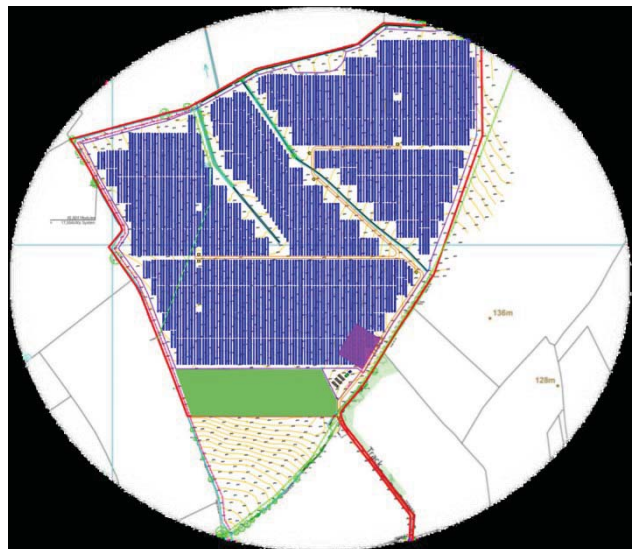
Key issues are:

What benefits can local residents and parish councils expect to receive from the proposal?

What will be the extent of the disruption from heavy goods vehicles during the construction of the solar farm?

What routes\* will the HGVs use to gain access to the site?

Will the power generated be available as cheaper energy for local homes and businesses?



*Figure 3: Proposed configuration of the solar farm*

\* The company has suggested that the trucks come off the A505 southern bypass rather than the A5, but will still need to come through the villages.

## HOME COVID TEST

1. *Pour a large glass of red wine, try to smell it.*
2. *If you can smell the wine then drink it and see if you can taste it.*
3. *If you can taste and smell it confirms you don't have Covid.*

Last night I did the test 19 times and all were negative thank God.  
Tonight I am going to do the test again because this morning I woke with a headache and feel like I am coming down with something.  
I am so nervous!



# Chalgrave Manor Solar Farm, Fancott.

A number of applications for solar farms close to us are under way and the following information is taken from the application by Buckle Chamberlain Partnership and Aton Energy who are preparing a planning application for a solar farm on land adjacent Chalgrave Manor Farm, Luton Road B579, Fancott (located on the map below). In January 2015, the same Site has received Planning Approval for a similar application from the Central Bedfordshire Council. The Developer will keep the same features in the new Planning Application to be submitted. The land to be included in the proposals for both solar panels and biodiversity enhancements is outlined on the following documents.

Aton Energy state the Site benefits from a good electricity grid connection, which is often the main biggest barrier faced to delivering renewable energy projects. The Site comprises predominantly Subgrade 3a agricultural land, *which is amongst*



# Chalgrave Manor Solar Farm, Fancott.

*the lowest category of the best and most versatile agricultural land.* This Grade is typical of the quality of land on this locality, and that is lower quality than elsewhere in the District. In the area of the Site where the solar farm would be, special arrangements will be undertaken by the Developer to carefully manage the risk of flooding. The solar farm can be accommodated without causing significant impacts on ecological, landscape and heritage assets. The Site will be grazed by sheep once the solar farm is built, ensuring the land remains suitable for agricultural purpose.

The proposed layout of Chalgrave Manor Solar Farm has been designed to minimise impacts on the surrounding landscape. In particular, fields in the north east and south east of the Site have been kept clear of development. This is to ensure that the view looking out from the nearby homes remain pleasant and those lands will remain of arable fields. Additionally, all existing boundary hedgerows and vegetation will be retained, and new hedgerows will be planted parallel to the edge of the solar panels. This will screen and filter views into the Site. Views of the solar farm will be more limited in practice as new hedgerows are planted and allowed to mature to a height of at least 2.5 metres.

For more information go to [www.chalgravemanorsolarfarm.co.uk](http://www.chalgravemanorsolarfarm.co.uk)





# Chalgrave Manor Solar Farm, Fancott.



## RECIPE CORNER Great Torrington Tea Loaf

*Recipe from Cider Lil (AKA ex pat Christine McDonagh) Now living in glorious Devon.*

This Torrington Tea Loaf is baked in a loaf tin and is almost unapologetically easy. Just weigh, stir and cook. The cake uses the all-in-one method and is suitable for food processors, stand mixer or hand-mixer. It's so easy and full proof and I love this traditional Devon Loaf.

**Prep time:** 20mins    **Cook time:** 1hr 45mins    **Total time:** 2hr 5mins

### **Ingredients:**

- 400 g mixed dried fruit see note
- 125 g butter at room temperature see note
- 3 large eggs
- 60 ml milk, (4 tablespoons)
- 1 rounded tablespoon jam (any flavour)
- 125 g soft brown sugar dark or light – see note
- 250 g self-raising flour see note
- 2 teaspoons mixed spice (10ml)



### **Preparation:**

- Preheat the oven to 170°C/ 150°C fan/ gas mark 3/ 325°F
- Either grease the tin with butter or just pop the liner in
- Weigh the fruit into a bowl for later

### **For the Torrington Tea Loaf:**

- Put all the ingredients **except the fruit** into a large bowl (or your mixer/food processor). (Butter, eggs, milk, jam, sugar, flour, spice)
- Beat together well, but don't overdo it. Scrape the mixture down and mix again.
- Add the dried fruit and stir in **by hand**. You don't want to break up the fruit.
- Carefully put the mixture in the tin/liner and use a knife to make a slight depression in the top of the mixture. This means you will have less of a domed top. Cook for 1 hour and 15 minutes, and test with a toothpick. When it comes out clean the cake is done. If not, return to the oven for 10 minutes and repeat. You may need up to 1 hour 45 mins
- Take the loaf out of the oven and leave in the tin for 10 minutes before turning out onto a wire rack to cool
- Store in an airtight box when cool. (You can leave the liner on until the cake is served)

**Storage:** This loaf will keep in the fridge for at least a week & it freezes well.



# Chemotherapy Tales

Colin here – as I'm sure you are all aware I've got Myeloma cancer .

Been caught really, really early and since June I've been in Phase 1 of my treatment which is medium level chemotherapy, involving an awful lot of pills each day, weekly injections and visits to the L&D.

First 3 months were pretty good, still working 4.5 days a week (half day in hospital), still walking the dog, running the house doing all the normal stuff. Slowly seeing energy levels decreasing, sleep patterns changing and some other tell-tale signs but still living a normal life.

Until late August/early September when boy did the chickens come home to roost ! Energy levels fell of a cliff, pains in my hips and legs, walking like an old man, major sleeping problems and generally feeling "this is not good at all" and "I feel like sh\*t" . Stopped riding motorbikes, reduced car use, only working 2-3 days a week now. But not all bad, my body has reacted so well to the treatment that one of my four chemo drugs has had its dose halved and come early December I will end Phase 1 of Chemo, ready to start Phase 2 (Stem Cell Transplant) in January/February

And the support from friends in the village and work has just been tremendous and let's face it – I will come out of this virtually guaranteed to be well and recovered and that isn't the prospect all people undergoing chemo have. The more I see and learn of the world of cancer I am astounded at how lucky I am to live in an age where it can be treated, not to have to sell my house to pay for that treatment, to have a cancer which is treatable and to have had it picked up so early on.

And the staff at the Chemo Unit at the L&D are just simply wonderful.

So despite having to crawl up the stairs on hands and knees, being permanently tired and having to put so many plans on hold, overall it has been a life-affirming experience. Just walking (very slowly) round a field at 8:00am with my dog running around me on a sunny day, or a wet day, or a foggy day, or in fact any day – makes you realise just how good life is !

**Colin McCausland**

# Restaurant Review



Debbie Parry

## The Five Arrows Hotel and Restaurant

High Street, Waddesdon, Aylesbury HP18 0JE  
Telephone: 01296 651727



The hotel stands at the gates of Waddesdon Manor and all profits go towards the upkeep of the Rothschild manor house and gardens. Will and I decided to treat ourselves and drove over in the rain one Saturday lunchtime – the journey took around 40 minutes.

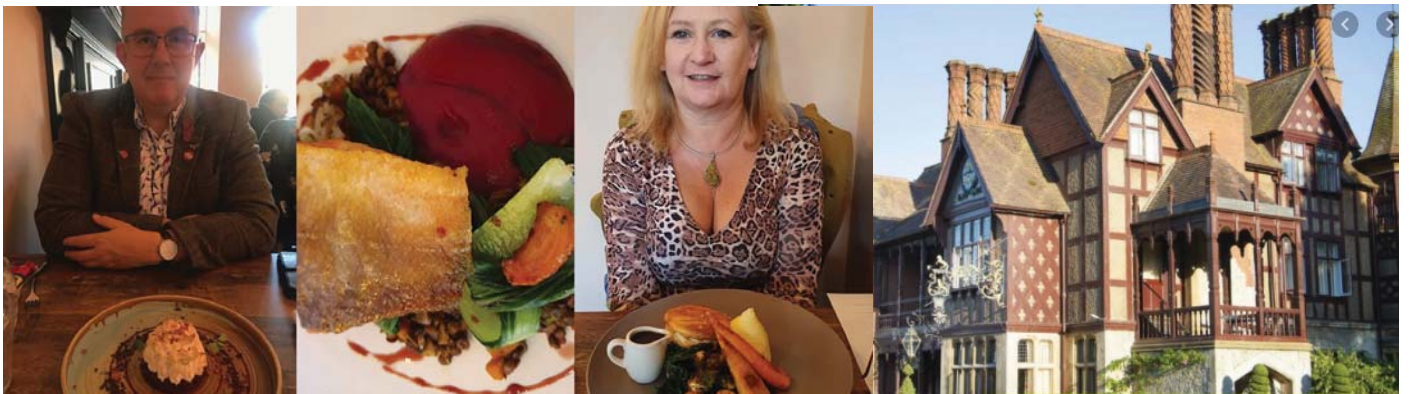
The restaurant is spread over two rooms and beautifully decorated and very spacious, staff were friendly and attentive.

We both had the amuse bouche – duck for me and Tofu for Will. Will then had the roasted pumpkin and smoked paprika soup with glazed cheese crouton and artisan bread. This was velvety smooth and delicious.

For main course I had the Waddesdon Estate beef & Shepherds Gold ale pie, mashed potatoes, pot roasted root vegetables and wine braised red cabbage. Will had the pan seared sea trout, beetroot ketchup, puy lentils and pak choi with a red wine reduction.

For pudding we ordered Baked Alaska: red velvet cake, caramel ice cream and raspberry scented meringue – and two spoons!

The food was top rate; delicious combinations of flavours and beautifully presented. Unfortunately, we are both observing “Sober October” so didn’t sample the wine – though I did gaze longingly at other people’s glasses! The bill came to £60 which we felt was good value for such great food and lovely surroundings.





# West's Educational Charity

*'Francis West, by will dated 31 March 1690, directed £400 to be laid out in land, the rents thereof to be equally divided amongst the poor of Chalgrave and Hockliffe, to enable them to put their children to school, with a conditional gift over for testator's poor relations. The legacy was laid out in the purchase of lands in Simpson, Bucks., in lieu of which 33 acres, or thereabouts, were allotted in 1766 on the inclosure in that parish, producing about £32 a year, which under an order of the Charity Commissioners of 4 April 1905 was determined to be wholly applicable for educational purposes, and was carried to the general account of the National school at Chalgrave which was also attended by the children of Hockliffe'.*

Fortunately, this land was in the Milton Keynes designated area and the capital is now considerable and grants are made each year by the trustees.

West's Educational Charity is a local charity which twice a year gives grants to young people 24 years and under residing in the parishes of Hockliffe or Chalgrave. The grants must be for an educational purpose – sports, performing arts, educational trips, Scouting, Guiding, etc. We also give a student grant to those attending university or college.

There are six Trustees: three from Hockliffe and three from Chalgrave.

There are usually 3 meetings a year - the meetings in January and July are for allocating grants and there is usually one other meeting to discuss financial matters. The value of the charity's assets varies considerably from year to year in line with fluctuations in the financial markets, at the moment the fund value is in the region of £819,000. We use the income from the fund to provide grants.

The number of applications for grants has risen considerably over the past 10 years and we reached the position where there was insufficient income to preserve the capital base for future generations and to pay out all applications in full. We therefore had to adopt guidelines to be as fair as possible to everyone. These guidelines have to be flexible and sometimes they need to be tweaked, particularly in times when interest rates are low and income falls. The current pandemic will have a big impact on the income.

Full details and application form can be found on the Chalgrave Parish Council website under Organisations. Alternatively contact the Clerk, Lesley Smith. Be aware that the deadlines for applications are 30<sup>th</sup> June and the 31<sup>st</sup> December.

For information about the West Trust go to the Chalgrave Parish website.

You can download an application form to apply for a grant

or call Lesley 01525 874716.

# Chalgrave Memorial Hall

## Fees and Charges effective from 1<sup>st</sup> January 2019

Period	Parish Resident Individual and Parish Voluntary Community Groups	**Non-Parish Resident or Parish Commercial	**Non-Parish Organisation/ Commercial
<b><i>MONDAY TO FRIDAY</i></b>			
9am – 6pm	£9.00 per hour	£18.00 per hour	£21.00 per hour
6pm – 11pm*	£10.50 per hour	£21.00 per hour	£28.50 per hour
<b><i>FRIDAY</i></b>			
6pm – 12 midnight*	£130	£260	£295
<b><i>SATURDAY</i></b>			
9am – 6pm	£11.50 per hour	£23.00 per hour	£26.50 per hour
6pm – 12 midnight*	£145	£290	£370
12.30pm – 12 midnight*	£185	£370	£425
<b><i>SUNDAY</i></b>			
10am – 10pm*	£11.50 per hour	£23.00 per hour	£29.00 per hour
<b><i>'WEEKEND RATE'</i></b>			
(Friday 6pm to Sunday 12 noon) NB Hall must be vacated at 11pm Friday and 12 midnight Saturday	£305	£610	£720

- Bank Holidays/New Year's Eve – Rates on application
- Committee Room available for hire separately when Hall not hired – Rates on application
- \*\*Block/Regular booking discount of up to 15% available
- Bookings outside above hours subject to individual rates on application.
- Non-refundable deposit of 50% of the booking fee payable to confirm booking.
- £300 damage deposit required on all bookings – refundable in full subject to no damage caused to Hall, contents, equipment or grounds and the Hall and grounds being left in a clean and tidy state. NB: should the cost of reparation to the Hall contents or equipment the Committee reserve the right to pursue the balance.

**Enquiries—Bookings 07831 482556 Information—Roger Masters 01525 873039**

**FOR BOOKINGS PLEASE TELEPHONE: 07831 482556**



## USEFUL CONTACTS

<b>Parish Council</b>			<a href="http://www.chalgrave.org">www.chalgrave.org</a>
Clerk	Lesley Smith	874716	<a href="mailto:chalgravepc@btinternet.com">chalgravepc@btinternet.com</a>
Chairman	Phil Parry	07831 605600	<a href="mailto:phil@philparryassociates.co.uk">phil@philparryassociates.co.uk</a>
Councillors	Ken Green	874107	<a href="mailto:kenandlyn@tinyworld.co.uk">kenandlyn@tinyworld.co.uk</a>
	Peter Warburton	874036	<a href="mailto:pwarburton45@gmail.com">pwarburton45@gmail.com</a>
	Kevin Ludgate	07768 606968	<a href="mailto:kevin.ludgate@Oliverlandpower.co.uk">kevin.ludgate@Oliverlandpower.co.uk</a>
	Frances Masters	873039	<a href="mailto:frances.masters@btinternet.com">frances.masters@btinternet.com</a>
	Debbie Levy	07931 408697	<a href="mailto:debbie.hampson61@btinternet.com">debbie.hampson61@btinternet.com</a>
	Jan Day	875921	<a href="mailto:Janet.day456@btinternet.com">Janet.day456@btinternet.com</a>
<b>Council</b>	Central Beds	03003 008000	<a href="http://www.centralbedfordshire.gov.uk">www.centralbedfordshire.gov.uk</a>
Ward C'Ilr	Mark Versallion	03003 008555	<a href="mailto:Mark.versallion@centralbedfordshire.gov.uk">Mark.versallion@centralbedfordshire.gov.uk</a>
<b>MP</b>	Andrew Selous	01582 662821	<a href="mailto:selousa@parliament.uk">selousa@parliament.uk</a>
<b>Memorial Hall</b>	Bookings	07831 482556	
<b>Senior Citizens</b>	Roger Masters	873039	<a href="mailto:roger.masters@btinternet.com">roger.masters@btinternet.com</a>
<b>Speedwatch</b>	Mike Wells	877098	<a href="mailto:mikewells@clara.co.uk">mikewells@clara.co.uk</a>
<b>Rector</b>	Rev Linda Washington	714442	
Warden	M. Chalmers	01582 605561	
Warden	S. Russell	07796 66174	
<b>West Charity</b>	Clerk Lesley Smith	874716	
<b>Schools</b>			
Lower	St Georges	872360	<a href="mailto:office@toddstg.co.uk">office@toddstg.co.uk</a>
Middle	Parkfields	872555	<a href="mailto:schooladmin@parkfield.cbeds.co.uk">schooladmin@parkfield.cbeds.co.uk</a>
Upper	Harlington	755100	<a href="mailto:enquiries@harlington.org">enquiries@harlington.org</a>
<b>Doctor</b>	Medical Centre	872222	<a href="http://www.toddingtondoctors.co.uk/">www.toddingtondoctors.co.uk/</a>
<b>Library</b>	Toddington	03003 008069	
<b>Police</b>	PC James Bonney	01525 873193	<u>Or Dial 101</u>
<b>Helping Hands</b>		07882 988270	
<b>Public Houses</b>			
The Plough	Stacey	873077	
<b>Clubs</b>			
Rotary Club	Chris Osborn	873920	
Sports Club	Phil Parry	07831 605600	<a href="http://www.chalgravesportsclub.co.uk">www.chalgravesportsclub.co.uk</a>
Tennis Club	Roger Fenwick	07814 598309	
Chalgrave WI	Maureen Gilmour	07818 043311	<a href="mailto:mg@maureengilmour.co.uk">mg@maureengilmour.co.uk</a>
Brownies/Guides	Dee Curtis	872649	
Rainbow	Dee Curtis	872649	
Cubs Scouts	Karen Calder	873065	

stuart

Beds & Bucks 01525 877650

Herts 01442 252040

Mobile 07710 770969

[www.sbms-online.co.uk](http://www.sbms-online.co.uk)

MAKING THE HOUSE BUYING  
PROCESS EASIER WITH  
HONEST, PROFESSIONAL &  
FRIENDLY MORTGAGE ADVICE



### MORTGAGES

We look at the whole market  
so that you do not have to

We are local  
and cover  
Beds,  
Bucks & Herts



### PROTECTION

We cover all you need to  
know about protecting you,  
your family and your home

- Mortgages for First Time Buyers, Homemovers and Remortgages
- Life, Critical Illness & Income Protection cover
- Unemployment Insurance
- Pension & Investment referrals
- Wills & Solicitor Recommendations
- Commercial, Bridging and Development Finance



### FINANCIAL ADVICE

We pride ourselves on  
providing suitable advice  
whatever your needs

call Stuart  
for a  
no obligation  
chat

[advice@sbms-online.co.uk](mailto:advice@sbms-online.co.uk)  
[www.sbms-online.co.uk](http://www.sbms-online.co.uk)



### COMMERCIAL

Help with commercial and  
development finance tailored  
to your requirements