

CPRE Bedfordshire, the countryside charity

Not all about planning!

CPRE Bedfordshire campaigns for a beautiful and thriving countryside. We work to protect, promote and enhance our urban greenspaces and countryside in Bedfordshire for now and future generations.



The countryside charity
Bedfordshire

What does CPRE Bedfordshire do?

- Campaigning and engaging with the local planning process to influence planning decisions that impact our countryside.
- Encouraging people to discover our countryside.
- Events and activities to promote the importance of our countryside and our work
- Living Countryside Awards to recognise the people and projects and that are enhancing our rural and urban environments.
- Support communities in their efforts to protect their local environment.



Living Countryside awards

Celebrating the people and projects that
are making a difference across the
county!

2023 – Celebrating 15 years of the
awards!



The countryside charity
Bedfordshire

Local Action Groups – Empowering Communities

Community led groups set up by local people in response to an unwelcome planning application.

CPRE Bedfordshire offers advice, expertise and mentoring

- to set up and maintain the group
- campaign planning and implementation
- marketing ,communications and community engagement
- understanding the planning process and how to engage with it

- Written guides and templates



The countryside charity
Bedfordshire

How can you support our work?

- Become a member
- Grant funding
- Spread the word
- Get involved –volunteering/Trustees
- Talk to us!



The countryside charity
Bedfordshire

Purpose of Afternoon Workshop

- Understanding the Planning Application Process
- Issues to consider
- Structuring the response
- Case Study



The Planning Application Process

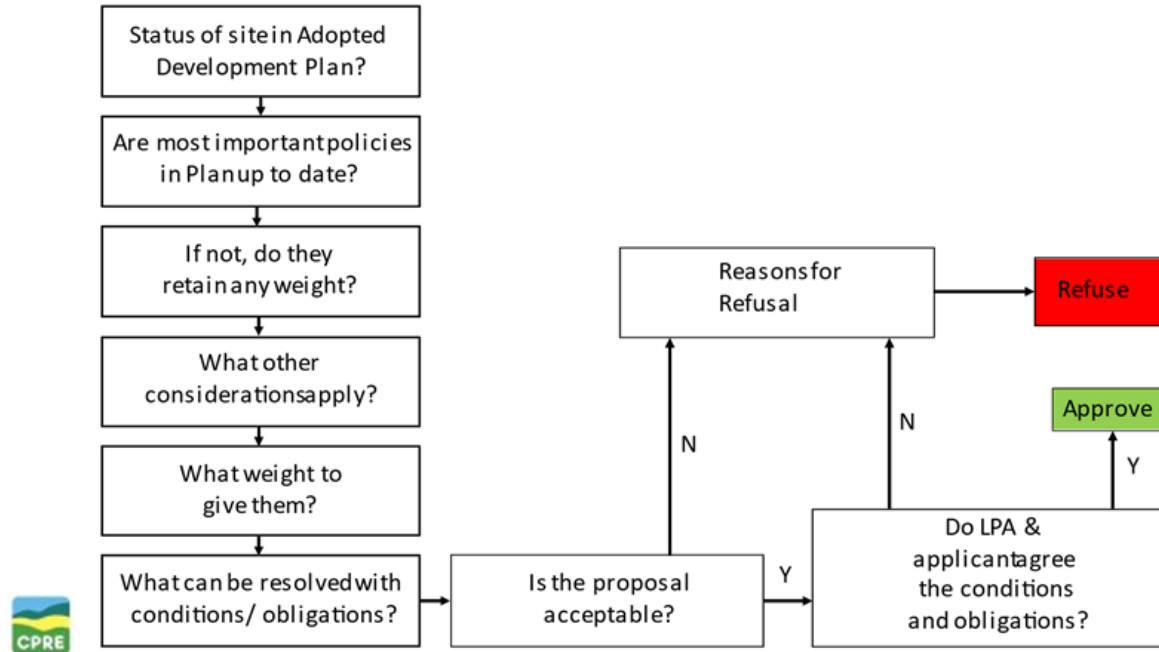
- Submission of an application

- Consultation
 - Statutory Consultees
 - Others
 - Time periods
 - How decisions are made
 - Appeals



The Planning Application Process

The 'decision flow': what's the structure of a planning decision?



Reviewing a Planning application

Use live link to CBC web site to show how to find application and documents which go with it.

[Link to planning portal](#)



Reasons for Refusal

- Lies beyond defined settlement envelopes (conflict with LP policy SP7)
- Harm to the character and appearance of the site and the area
- Poor quality and unsympathetic design not in keeping with existing pattern/character of development (LP policy HQ1 HQ8 EE5)
- Impact on Amenity and Living Conditions of existing and future occupiers (LP CC8 and HQ1 & NPPF)
- Lack of evidence on impact on protected species, habitats or ecosystems and gain in biodiversity. (LP Policy EE2 and EE3 and NPPF)
- No agreement on planning obligations/contributions

